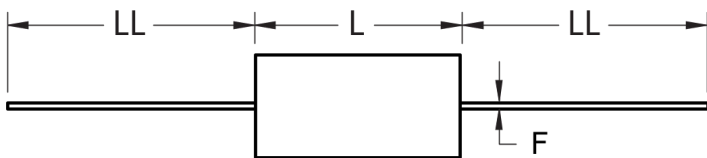
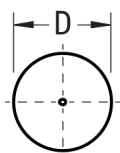


FRONT VIEW



SIDE VIEW



Click [here](#) for the 3D model.

Dimensions

D	10mm MAX
L	28mm MAX
LL	20mm MIN
F	0.8mm +/-0.05mm

Packaging Specifications

Packaging	T&R
Packaging Quantity	600

General Information

Series	A50
Dielectric	Metallized Polyester
Style	Axial
Features	Automotive Grade
RoHS	Yes
Lead	Wire Leads
Qualifications	AEC-Q200
AEC-Q200	Yes
Component Weight	2.6 g
Miscellaneous	Above 85C DC And AC Voltage Derating Is 1.25%/C. maxK0 = 5200.

Specifications

Capacitance	0.68 uF
Capacitance Tolerance	10%
Voltage AC	200 VAC
Voltage DC	400 VDC, 300 VDC (105C)
Temperature Range	-55/+105°C
Rated Temperature	85°C
Dissipation Factor	0.8% 1kHz, 1.2% 10kHz
Insulation Resistance	14.7059 GOhms
Max dV/dt	6.5 V/us
Inductance	7 nH