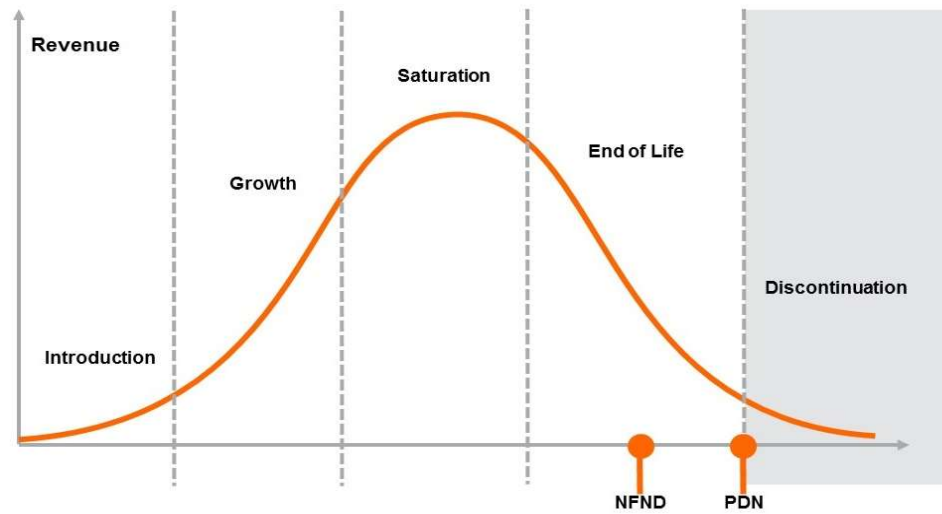


Product Or Individual Q-Code Discontinuation (acc. JEDEC J-STD-048) OS-PDN-2022-059

01 July 2022

Last order: 01 October 2022

Last delivery: 01 January 2023



Please direct your feedback to your local Sales office.

DISCONTINUED				NEW (REPLACEMENT)		
Device	Ordering Code	Brand	Reason for discontinuation	Device	Datasheet Ordering Code	Brand
GW JCLPS2.EM-H3H5-XX36-1-65-2-R33-XX	Q65112A9262	DURIS	No sufficient future volume forecast	NO REPLACEMENT		
GW JDSTS2.EM-H6H7-XX35-K2L1-65-2-R33-XX	Q65112A9342	DURIS	No sufficient future volume forecast	NO REPLACEMENT		
GW JDSTS2.CM-H1H3-XX35-1-65-2-R33-XX	Q65112A9460	DURIS	No sufficient future volume forecast	NO REPLACEMENT		
GW JDSTS2.CM-GVH1-XX38-1-65-2-R33-XX	Q65112A9462	DURIS	No sufficient future volume forecast	NO REPLACEMENT		
GW JDSTS2.EM-H3H7-XX38-K2L1-65-B-2-R33-X	Q65112A9655	DURIS	No sufficient future volume forecast	NO REPLACEMENT		
GW JCLPS2.EM-H3H4-XX36-L1L2-65-2-R33-LM	Q65112A9669	DURIS	No sufficient future volume forecast	NO REPLACEMENT		
GW JDSTS2.EM-H3H5-XX58-1-65-B-2-R33-XX	Q65112A9808	DURIS	No sufficient future volume forecast	NO REPLACEMENT		
GW JCLPS2.EM-H3H5-A232-1-65-2-R33-XX	Q65113A0169	DURIS	No sufficient future volume forecast	NO REPLACEMENT		
GW JCLPS2.EM-H3H8-XX32-1-65-2-R33-XX	Q65113A0171	DURIS	No sufficient future volume forecast	NO REPLACEMENT		
GW JDSTS2.EM-H4H5-XX37-1-65-B-2-R33-XX	Q65113A0214	DURIS	No sufficient future volume forecast	NO REPLACEMENT		
GW JCLPS2.CM-GVH1-XX31-1-65-2-R33-XX	Q65113A0291	DURIS	No sufficient future volume forecast	NO REPLACEMENT		
GW JDSTS2.EM-H5H7-XX32-1-65-2-R33-XX	Q65113A0293	DURIS	No sufficient future volume forecast	NO REPLACEMENT		
GW JDSTS2.EM-H5H7-XX33-1-65-2-R33-XX	Q65113A0294	DURIS	No sufficient future volume forecast	NO REPLACEMENT		
GW JCLPS2.CM-GVH1-XX31-1-65-2-R33-XX	Q65113A0295	DURIS	No sufficient future volume forecast	NO REPLACEMENT		
GW JCLPS2.EM-H3H5-XX31-1-65-2-R33-XX	Q65113A0416	DURIS	No sufficient future volume forecast	NO REPLACEMENT		