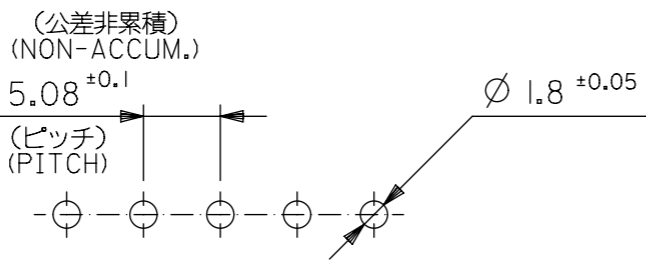
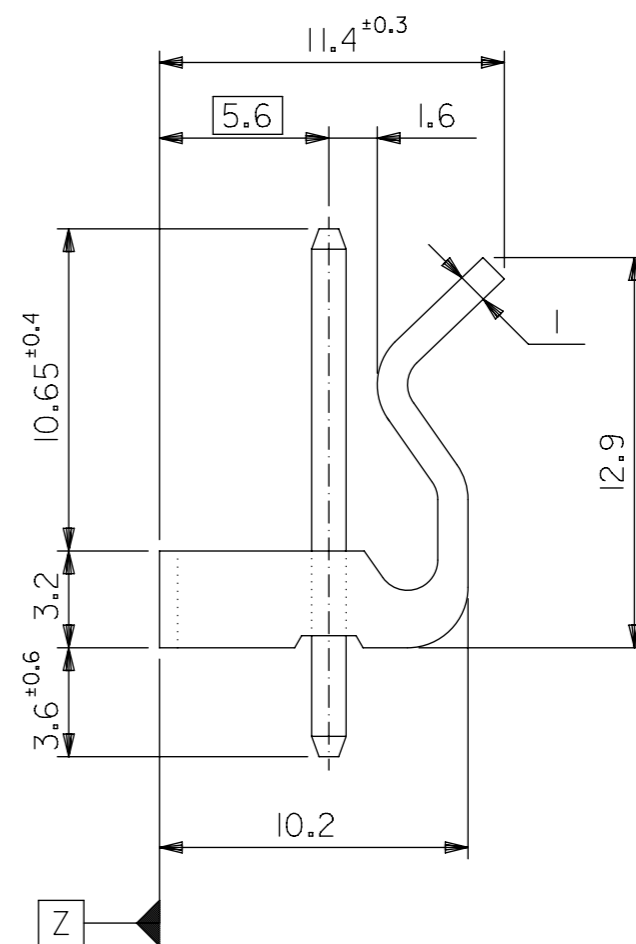
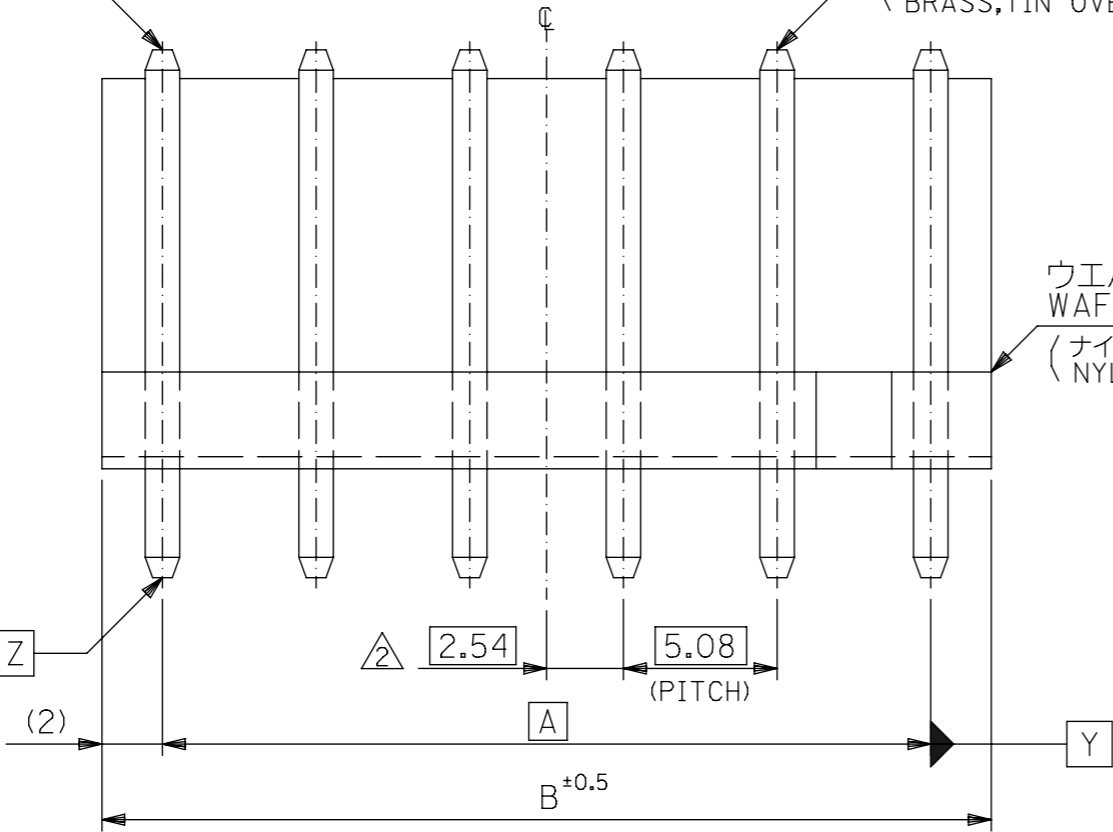


⊕ ∅ 0.6 Y Z

ピン (□1.14X17.45)
PIN
(黄銅, 銅下地錫メッキ
BRASS, TIN OVER COPPER PLATING)

ウエハー
WAFER
(ナイロン66, UL94V-2
NYLON66)

⊕ ∅ 0.6 Y Z



基板取付穴推奨寸法
RECOMMENDED P.C.B.HOLE DIMENSION

注記
NOTE

- 1 ウエハーのそりは、長さ 25.4 に対して0.24 MAX..
CAMBER MUST BE 0.24 MAX. PER 25.4
- △ 全極数が偶数の場合のみ適用。
TO BE APPLIED ONLY WHEN ALL CKTS. ARE EVEN.

44.64	40.64	▲ -109I	▲ -09A	9
34.48	30.48	-107I	-07A	7
29.4	25.4	-106I	-06A	6
24.32	20.32	-105I	-05A	5
19.24	15.24	▼ -104I	▼ -04A	4
14.16	10.16	▼ -103I	▼ -03A	3
9.08	5.08	10-32-102I	5281-02A	2
B	A	EDP NO.	ENG. NO.	極数 NO. OF CKTS.

THIS DRAWING CONTAINS INFORMATION THAT IS PROPRIETARY TO MOLEX ELECTRONIC TECHNOLOGIES, LLC AND SHOULD NOT BE USED WITHOUT WRITTEN PERMISSION

DIMENSION UNITS	SCALE	CURRENT REV DESC: REMOVED OBSOLETE PART NUMBER AS PER PCN#509989.		
mm	4:1			
GENERAL TOLERANCES (UNLESS SPECIFIED)				
		MM	INCH	EC NO: 708673 DRWN: SANTHN 2022/05/11 CHK'D: GGA 2022/06/22 APPR: GGA 2022/06/22 INITIAL REVISION: DRWN: TYAJIMA01 2014/03/13 APPR: NUKITA 2014/03/13
4 PLACES	±			
3 PLACES	±			
2 PLACES	±			
1 PLACE	±			
0 PLACES	±			DOCUMENT NUMBER: SD-5281-001 DOC TYPE: PSD DOC PART: 001 REVISION: J1
ANGULAR TOL ± 1.0°		DRAFT WHERE APPLICABLE MUST REMAIN WITHIN DIMENSIONS THIRD ANGLE PROJECTION DRAWING: A3-SIZE SERIES: 5281 MATERIAL NUMBER: SEE TABLE CUSTOMER: GENERAL MARKET SHEET NUMBER: 1 OF 1		

GENERAL TOLERANCES (UNLESS SPECIFIED)

10 UNDER	±0.15
10 OVER 30 UNDER	---
30 OVER	---