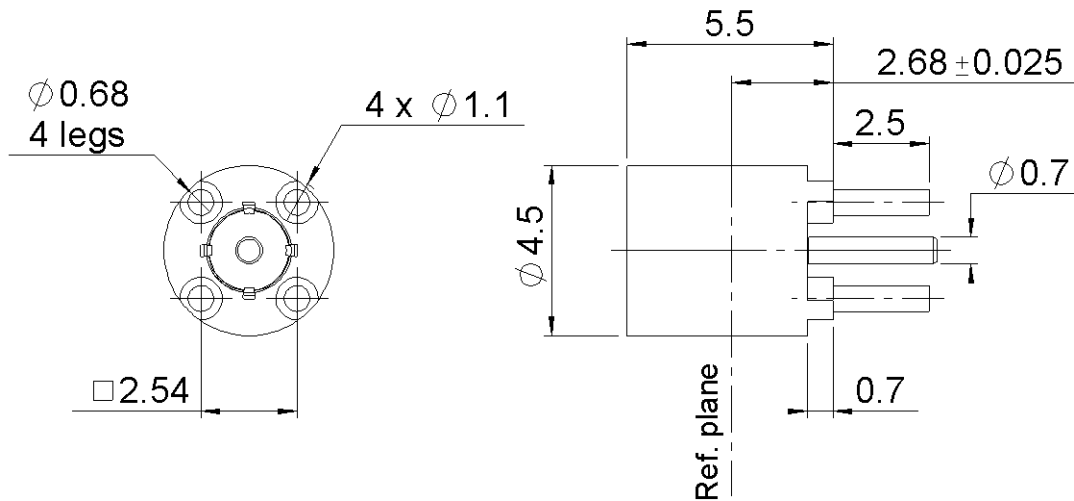


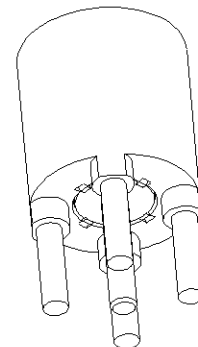
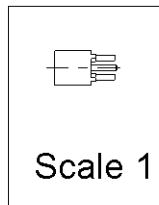
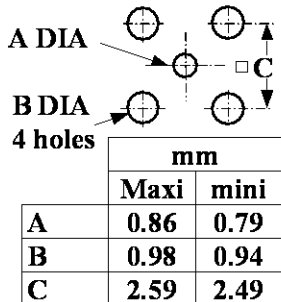
**STRAIGHT MALE RECEPTACLE NON MAGNETIC**  
**SOLDER LEGS FOR PCB - LIMITED DETENT**

**R222.946.314**

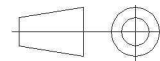
Series : SMP-COM



**PANEL CUT OUT**



All dimensions are in mm.



COMPONENTS	MATERIALS	PLATING ( $\mu\text{m}$ )
BODY	NON MAGNETIC BRONZE	GOLD OVER COPPER
CENTER CONTACT	NON MAGNETIC BRONZE	GOLD OVER COPPER
OUTER CONTACT		
INSULATOR	PTFE	
GASKET		
OTHERS PARTS		
-	-	-
-	-	-

Issue : 1219 B

In the effort to improve our products, we reserve the right to make changes judged to be necessary.



**STRAIGHT MALE RECEPTACLE NON MAGNETIC**  
**SOLDER LEGS FOR PCB - LIMITED DETENT**

**R222.946.314**

Series : SMP-COM

**PACKAGING**

Standard	Unit	Other
<b>100</b>	-	<b>Contact us</b>

**SPECIFICATION**

**ELECTRICAL CHARACTERISTICS**

Impedance		<b>50</b> Ω
Frequency		<b>0-12</b> GHz
VSWR	<b>1.15*</b> +	<b>0,0000</b> x F(GHz) Maxi
Insertion loss		<b>0.12*</b> √F(GHz) dB Maxi
RF leakage	- (	<b>NA</b> - F(GHz)) dB Maxi
Voltage rating		<b>335</b> Veff Maxi
Dielectric withstanding voltage		<b>500</b> Veff mini
Insulation resistance		<b>5000</b> MΩ mini

**ENVIRONMENTAL**

Operating temperature	<b>-55/+125</b> ° C
Hermetic seal	<b>NA</b> Atm.cm3/s
Panel leakage	<b>NA</b>

**OTHER CHARACTERISTICS**

Assembly instruction **NA**

Others :

\* Coaxial Transmission Line Only

Distorsion of the magnetic field

< 0.5 ppm at 10 mm at Bo = 1.5 Tesla

**MECHANICAL CHARACTERISTICS**

Center contact retention		
Axial force – Mating end	<b>6.8</b>	N mini
Axial force – Opposite end	<b>NA</b>	N mini
Torque	<b>NA</b>	N.cm mini
Recommended torque		
Mating	<b>NA</b>	N.cm
Panel nut	<b>NA</b>	N.cm
Mating life	<b>100</b>	Cycles mini
Weight	<b>0,4800</b>	g

Issue : 1219 B

In the effort to improve our products, we reserve the right to make changes judged to be necessary.

