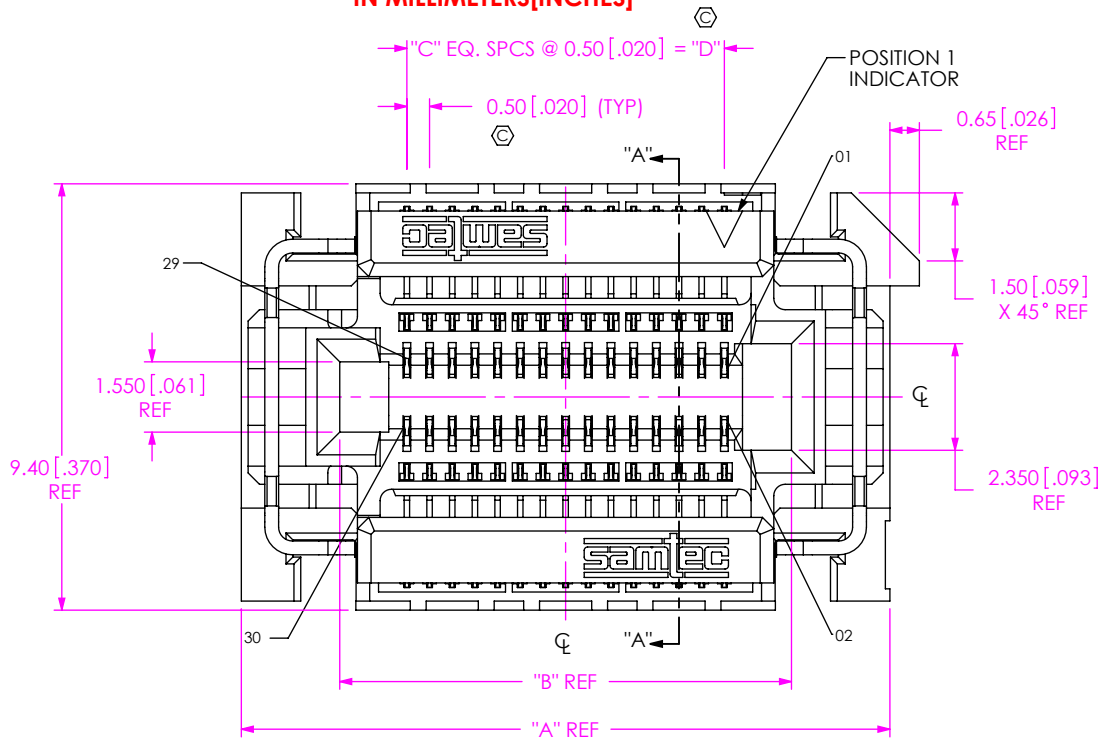


DESIGNED & DIMENSIONED  
IN MILLIMETERS [INCHES]

DO NOT  
SCALE FROM  
THIS PRINT

FS5-XX-XX.X-X-DV-XX-X-TR



No. OF POSITIONS  
-15, -30  
(PER ROW)

LEAD STYLE  
-04.0: 4MM

PLATING SPECIFICATION  
-L: LIGHT SELECTIVE, 10 AU / 50  
NI MIN ON CONTACT, MATTE  
TIN ON TAIL

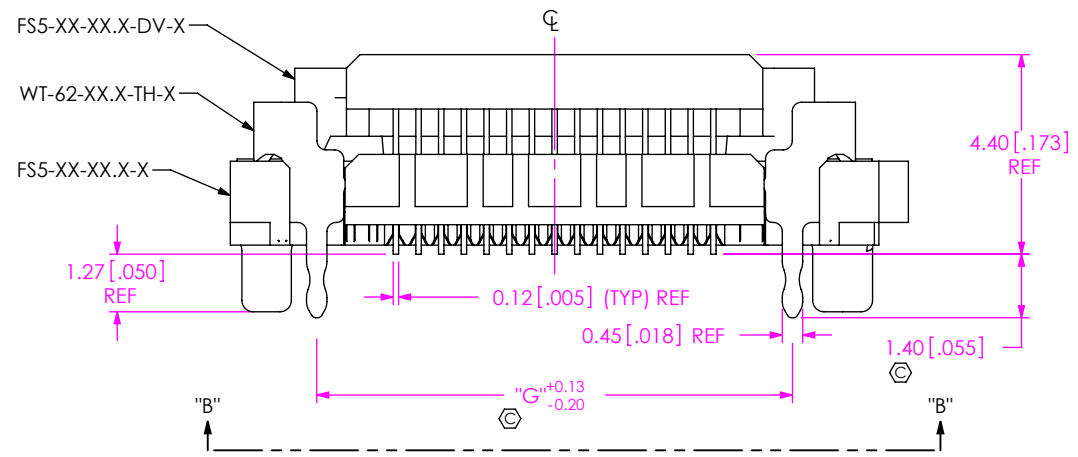
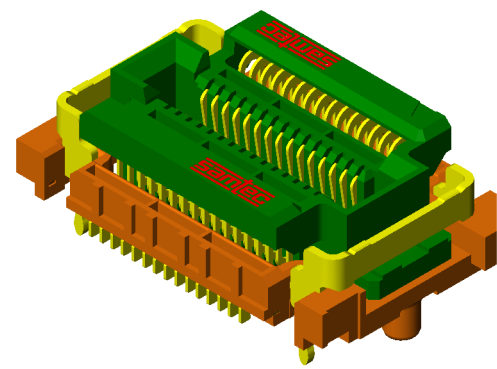
ROW SPECIFICATION  
-DV: DOUBLE VERTICAL

PACKAGING  
-TR: TAPE & REEL  
(SEE NOTES 3,4 & 5)

OPTION  
-K: POLYIMIDE PAD  
(SEE FIG 3, SHT 3)

WELD TAB  
-TH: THRU HOLE  
(USE WT-62-XX.X-TH-X)  
\*SM: SURFACE MOUNT  
(USE WT-62-XX.X-SM-X)

(\* = NOT TOOLED)



WELD TAB	WT PART NUMBER
-TH	WT-62-XX.X-TH-X
*SM	WT-62-XX.X-SM-X

(\* = NOT TOOLED)

STACK HEIGHT					
FS5 LEAD STYLE	FT5 LEAD STYLE				
	-01.0	-03.0	*-06.0	*-08.0	*-10.0
-04.0	5.0 [0.20]	7.0 [0.28]	10.0 [0.39]	12.0 [0.47]	14.0 [0.55]

(\* = NOT TOOLED)


- NOTES:
- ⊗ REPRESENTS A CRITICAL DIMENSION.
  - PUSH OUT FORCE 2.22N [.50LBS].
  - TAPE & REEL WILL BE SUPPLIED WHETHER OR NOT -TR IS SPECIFIED.
  - FOR QUANTITIES UP TO 49 PCS., NO LEADER, TRAILER OR EIA-481 REEL WILL BE SUPPLIED.
  - FOR QUANTITIES OF 50 TO 124 PCS., NO LEADER, TRAILER OR EIA-481 REEL WILL BE SUPPLIED.

FIG 1  
FS5-15-04.0-X-DV-TH-X-TR SHOWN

UNLESS OTHERWISE SPECIFIED,  
DIMENSIONS ARE IN  
MILLIMETERS [INCHES].  
TOLERANCES ARE:  
DECIMALS ANGLES  
X.X: ±0.3 [.01] 2°  
X.XX: ±0.13 [.005]  
X.XXX: ±0.051 [.0020]

PROPRIETARY NOTE  
THIS DOCUMENT CONTAINS INFORMATION  
CONFIDENTIAL AND PROPRIETARY TO  
SAMTEC, INC. AND SHALL NOT BE REPRODUCED  
OR TRANSFERRED TO OTHER DOCUMENTS OR  
DISCLOSED TO OTHERS OR USED FOR ANY  
PURPOSE OTHER THAN THAT WHICH IT WAS  
OBTAINED WITHOUT THE EXPRESSED WRITTEN  
CONSENT OF SAMTEC, INC.

MATERIAL: DO NOT SCALE DRAWING SHEET SCALE: 6:1  
INSULATOR: LCP, COLOR: BLACK UL 94 V0  
CONTACT: BeCu  
WT: PHOS BRONZE



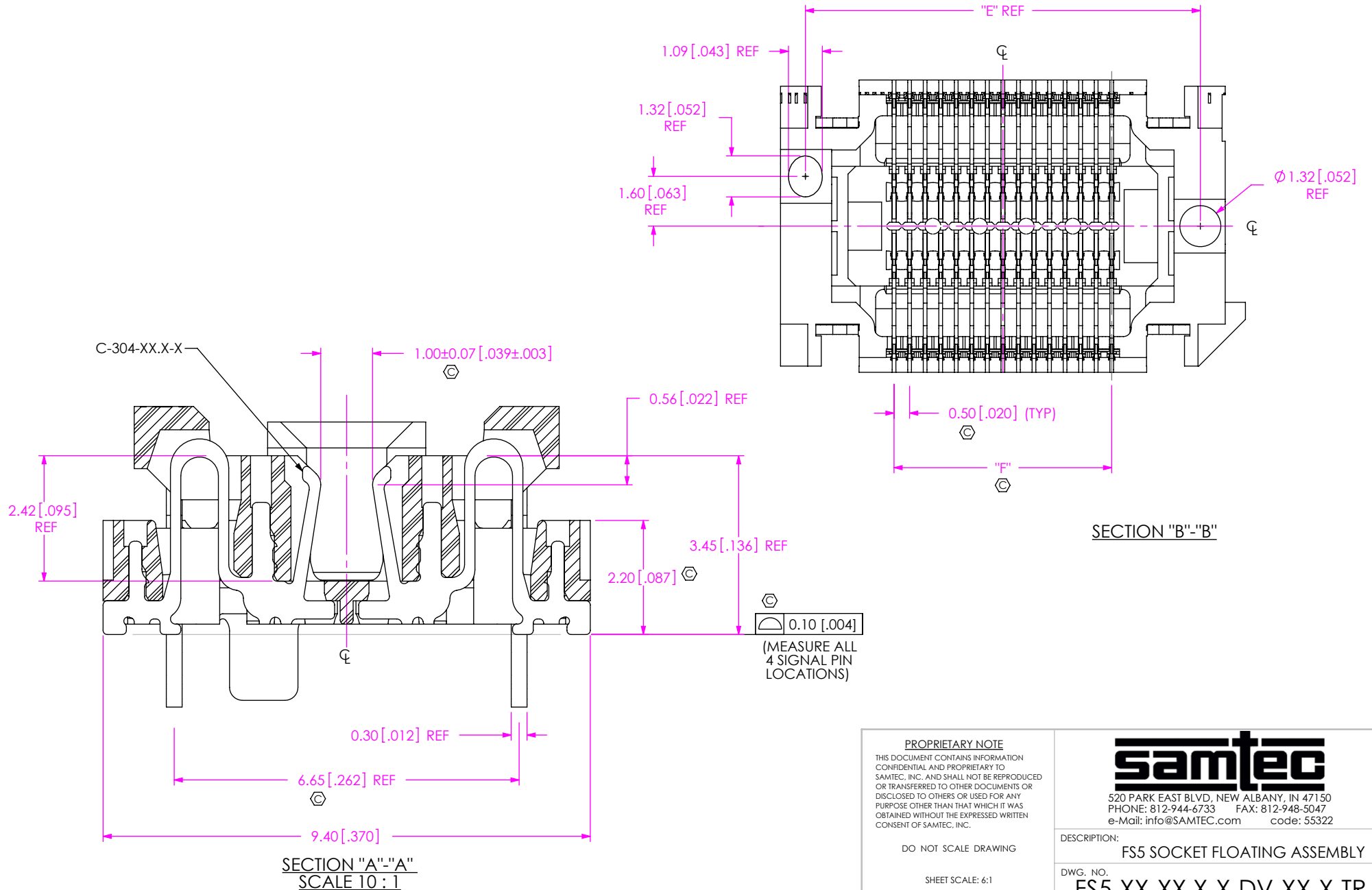
520 PARK EAST BLVD, NEW ALBANY, IN 47150  
PHONE: 812-944-6733 FAX: 812-948-5047  
e-Mail: info@SAMTEC.com code: 55322

DESCRIPTION:  
FS5 SOCKET FLOATING ASSEMBLY

DWG. NO.  
FS5-XX-XX.X-X-DV-XX-X-TR

BY: R MUSSER 08/04/2009 SHEET 1 OF 3

TABLE 2													
No. OF POS	"A"		"B"		"C"	"D"		"E"		"F"		"G"	
-15	14.30	[0.563]	9.96	[0.392]	14	7.000	[0.2756]	12.70	[0.500]	7.000	[0.2756]	10.50	[0.413]
-30	21.80	[0.858]	17.46	[0.687]	29	14.500	[0.5709]	20.20	[0.795]	14.500	[0.5709]	18.00	[0.709]



**PROPRIETARY NOTE**  
THIS DOCUMENT CONTAINS INFORMATION CONFIDENTIAL AND PROPRIETARY TO SAMTEC, INC. AND SHALL NOT BE REPRODUCED OR TRANSFERRED TO OTHER DOCUMENTS OR DISCLOSED TO OTHERS OR USED FOR ANY PURPOSE OTHER THAN THAT WHICH IT WAS OBTAINED WITHOUT THE EXPRESSED WRITTEN CONSENT OF SAMTEC, INC.

**samtec**  
520 PARK EAST BLVD, NEW ALBANY, IN 47150  
PHONE: 812-944-6733 FAX: 812-948-5047  
e-Mail: info@SAMTEC.com code: 55322

DO NOT SCALE DRAWING  
SHEET SCALE: 6:1

DESCRIPTION: FS5 SOCKET FLOATING ASSEMBLY  
DWG. NO. FS5-XX-XX.X-X-DV-XX-X-TR  
BY: R MUSSER 08/04/2009 SHEET 2 OF 3

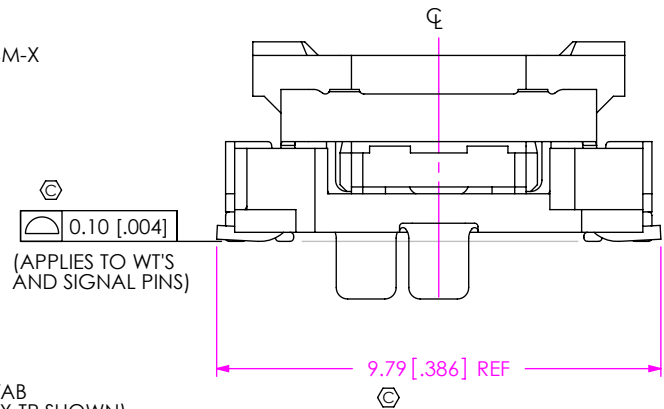
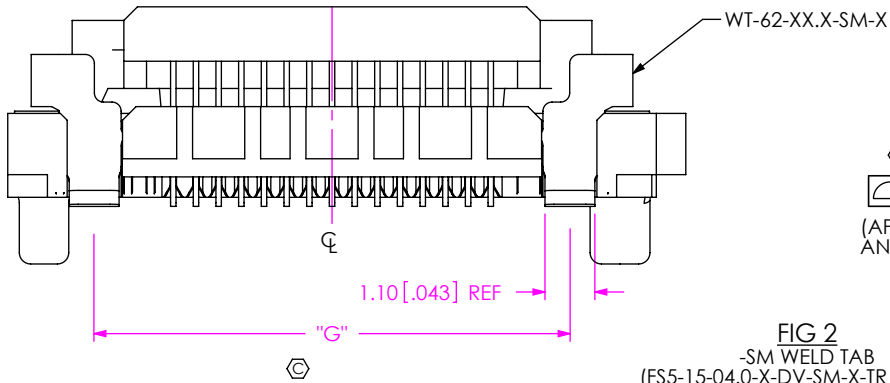
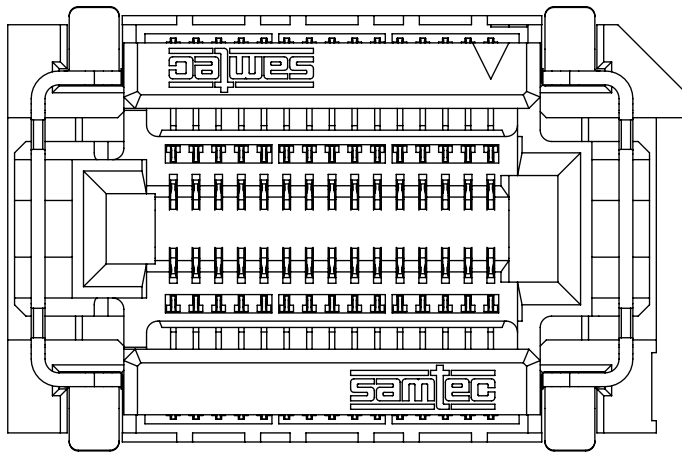


FIG 2  
-SM WELD TAB  
(FS5-15-04.0-X-DV-SM-X-TR SHOWN)  
(SAME AS FIG 1, EXCEPT AS SHOWN)  
(NOT TOOLED)

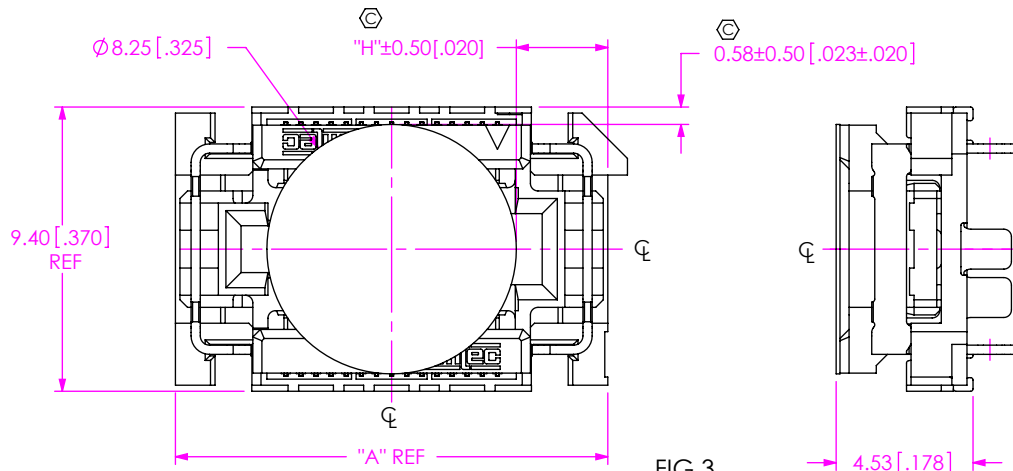


FIG 3  
-K: POLYIMIDE PAD  
(USE K-DOT-.325-.450-.005)  
(FS5-15-04.0-X-DV-TH-K-TR SHOWN)

No. OF POS	"H"
-15	3.03 [0.119]
-30	6.78 [0.267]

**PROPRIETARY NOTE**  
THIS DOCUMENT CONTAINS INFORMATION CONFIDENTIAL AND PROPRIETARY TO SAMTEC, INC. AND SHALL NOT BE REPRODUCED OR TRANSFERRED TO OTHER DOCUMENTS OR DISCLOSED TO OTHERS OR USED FOR ANY PURPOSE OTHER THAN THAT WHICH IT WAS OBTAINED WITHOUT THE EXPRESSED WRITTEN CONSENT OF SAMTEC, INC.

DO NOT SCALE DRAWING

SHEET SCALE: 6:1

**samtec**

520 PARK EAST BLVD, NEW ALBANY, IN 47150  
PHONE: 812-944-6733 FAX: 812-948-5047  
e-Mail: info@SAMTEC.com code: 55322

DESCRIPTION:  
FS5 SOCKET FLOATING ASSEMBLY

DWG. NO.  
FS5-XX-XX.X-X-DV-XX-X-TR

BY: R MUSSER 08/04/2009 SHEET 3 OF 3