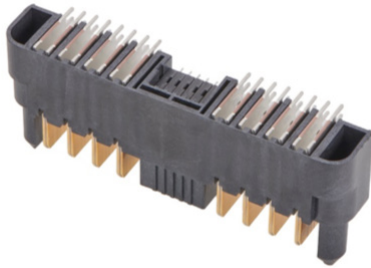


# EXTreme Guardian HD Power Connectors

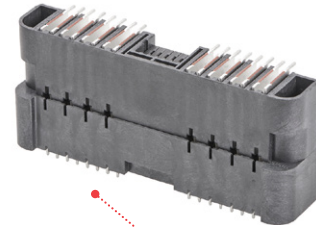


EXTreme Guardian HD Power Connectors offer configurable hybrid power/signal solutions and provide high-current density in a low-profile package for design flexibility

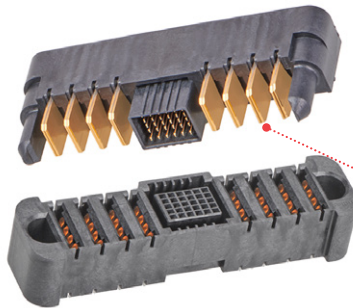
## Features And Advantages



**PCB pegs**  
Enable accurate through-hole positioning and secure retention



**Through-hole solder and press-fit tails**  
Offers flexible manufacturing options



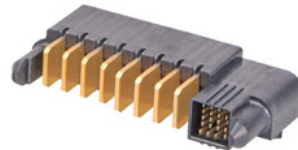
**Gold contact plating**  
Provides low interface resistance

**Small centerline spacing of 5.15mm**  
Reduces PCB footprint compared to legacy power products

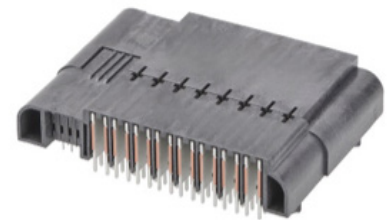
**Current density up to 80.0A per blade**  
Provides one of the greatest current-density solutions



**High temperature of 125°C power contact rating**  
Provides greater margin for customers' temperature designs



**UL and CSA certification**  
Has accredited safety agency approval and meets safety requirements

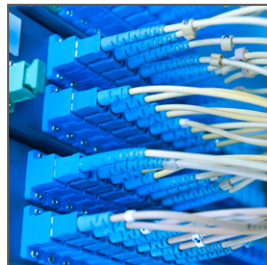


**Redundant contact design that handles up to 125V**  
Supports AC or DC high-voltage applications with the lowest feasible voltage drop and irreversible dissipative power losses

## Markets and Applications

### Telecommunication/Networking

- Routers
- Switches
- 1U Rack box
- Backplanes
- Power supplies
- Servers



Routers



Servers



Industrial Controls

### Data/Computing

- High-end servers
- Workstations

### Industrial

- Industrial Controls

# EXTreme Guardian HD Power Connectors

**molex**

## Specifications

### *REFERENCE INFORMATION*

Packaging: Tray  
UL File No.: E29179  
Designed In: Millimeters  
RoHS: Yes  
Halogen Free: Yes  
Glow Wire Capable: No

### *ELECTRICAL*

Voltage (max.): 125V  
Current (max.): 80.0A  
Contact Resistance (max.): 0.40 milliohms  
Dielectric Withstanding Voltage: 1500V DC  
Insulation Resistance (min.): 5000 Megohms

### *MECHANICAL*

Contact Retention to Housing (min.): 390g  
Insertion Force to PCB (max.): 18.5 lbs./pin  
Mating Force: 1,584g/circuit max. (RA to vert.)  
Unmating Force (min.): 240g/circuit  
Durability (min.): 200 cycles

### *PHYSICAL*

Housing: LCP  
Contact: Copper Alloy  
Contact Area — Gold  
Solder Tail Area — Tin  
Underplating — Nickel  
PCB Thickness (min.): 1.58mm  
Operating Temperature (power ckts): -40 to +125°C

[www.molex.com/link/extremeguardian.html](http://www.molex.com/link/extremeguardian.html)

Molex is a registered trademark of Molex, LLC in the United States of America and may be registered in other countries; all other trademarks listed herein belong to their respective owners.