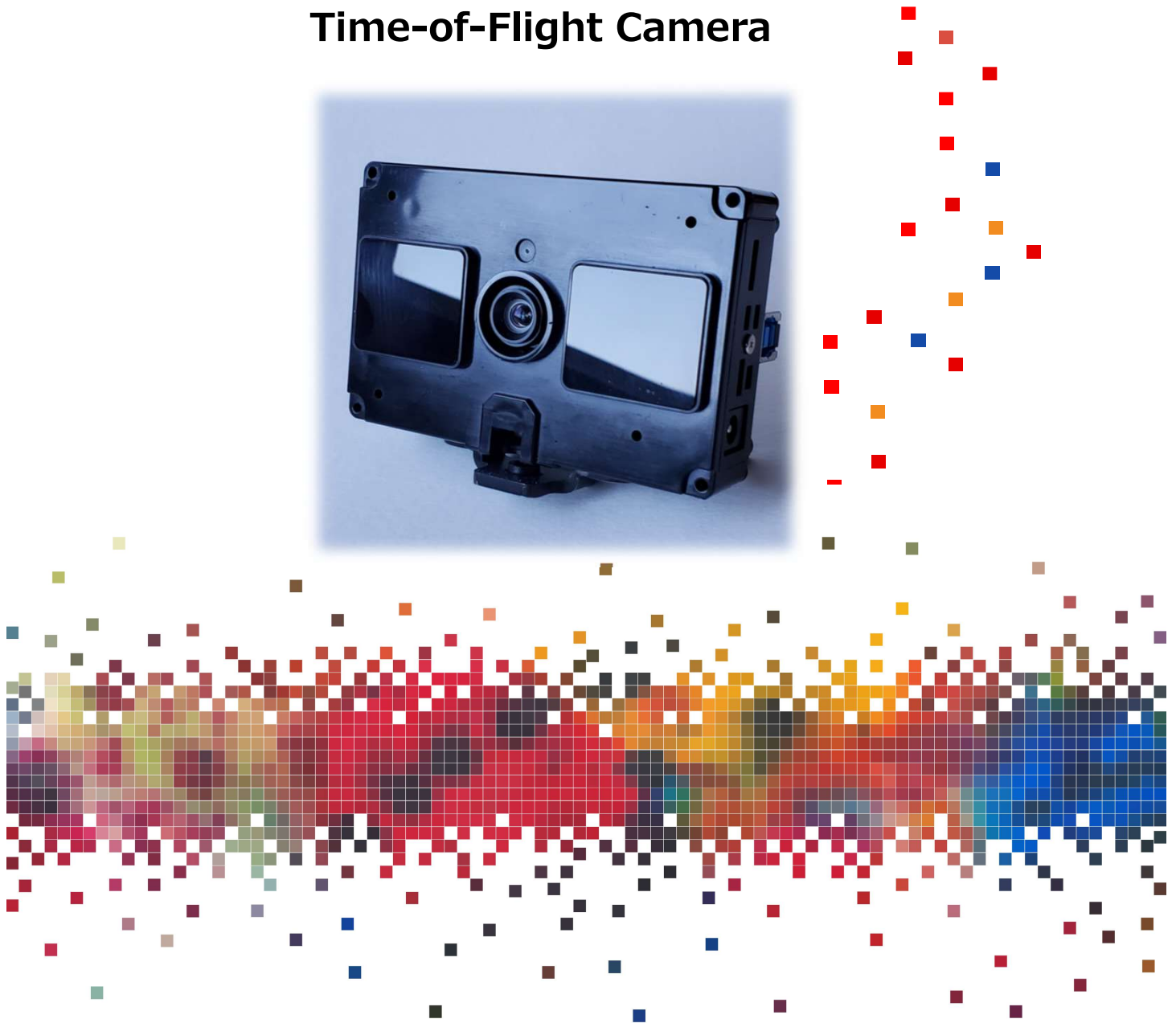


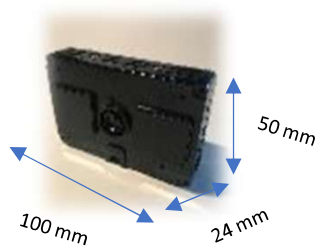
Panasonic

Demonstration Software User Guide

CDM-GC**GC1N**ZA Time-of-Flight Camera



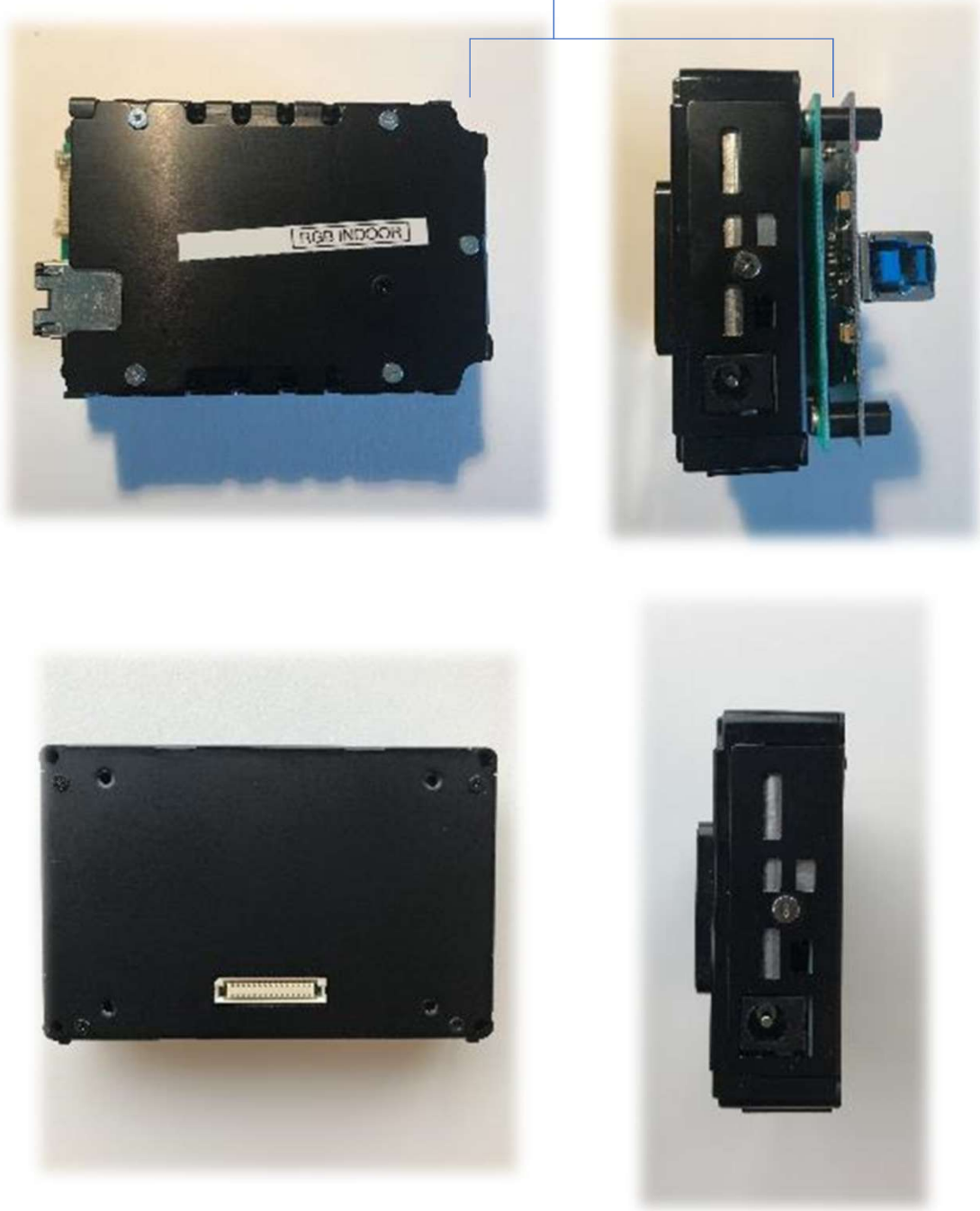
Panasonic GC1N ToF camera



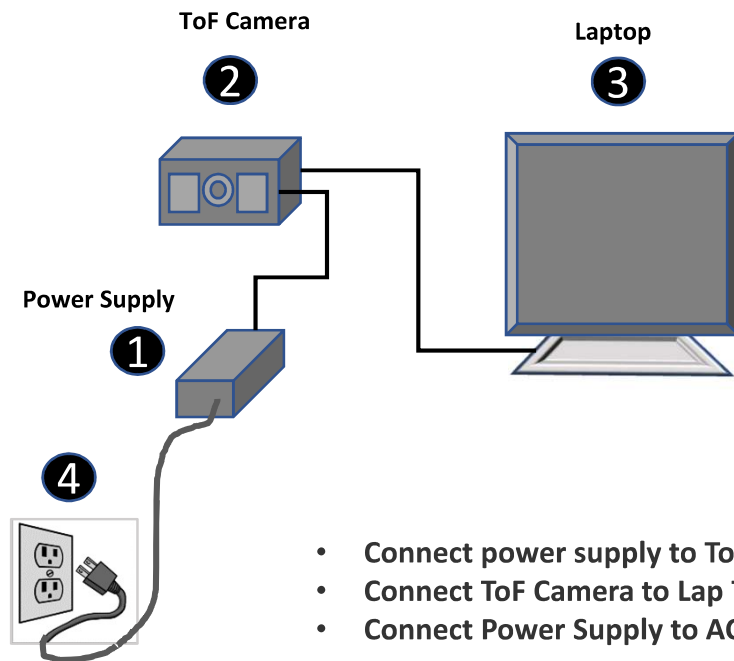
- Size: W80 x H40 x D27
- FOV : H87 x V67
- Interface: MIPI-CSI-2
- Power consumption: ~6W

USB3.0 Card attachment:

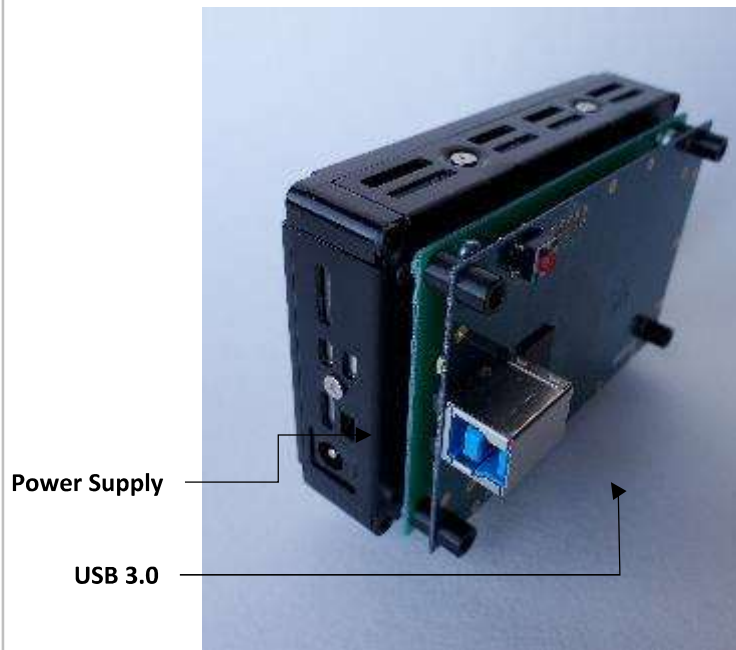
USB3.0 Card



Set Up:



- Connect power supply to ToF Camera
- Connect ToF Camera to Lap Top
- Connect Power Supply to AC outlet

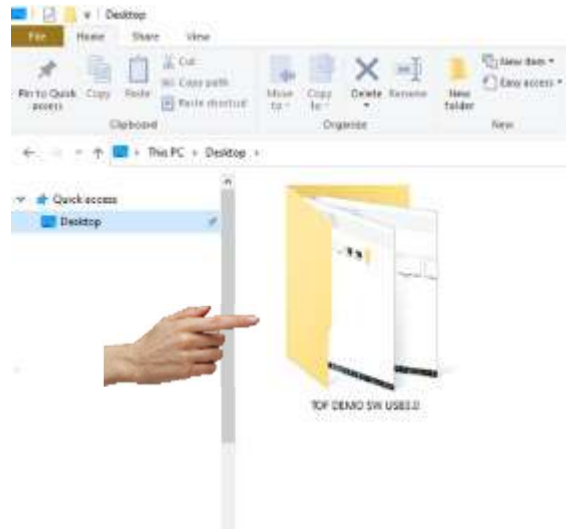


USB
Interface Card

Note:
(4) Small Red LEDs should slightly visible to indicate the Camera is properly connected and communicating with the Demo SW

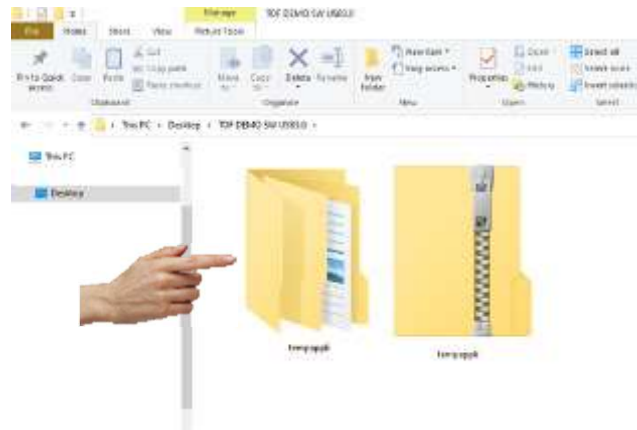
Step 2

Open [TOF DEMO SW USB3.0] folder.



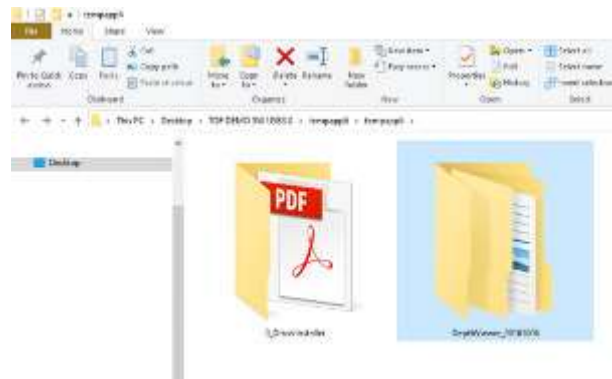
Step 3

Open [tempappli] folder.

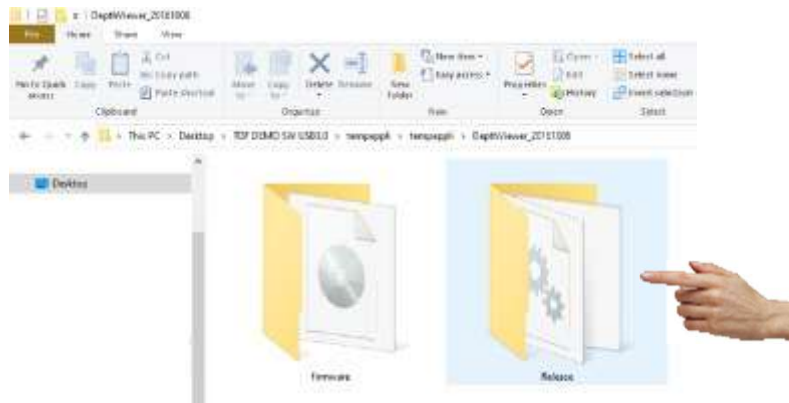


Step 4

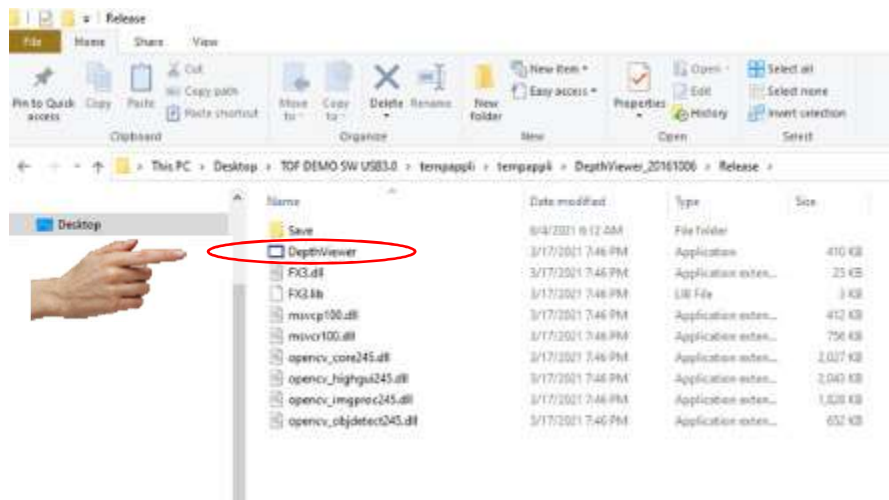
Open [DepthViewer20161006] folder.



Step 5 Open [Release] folder

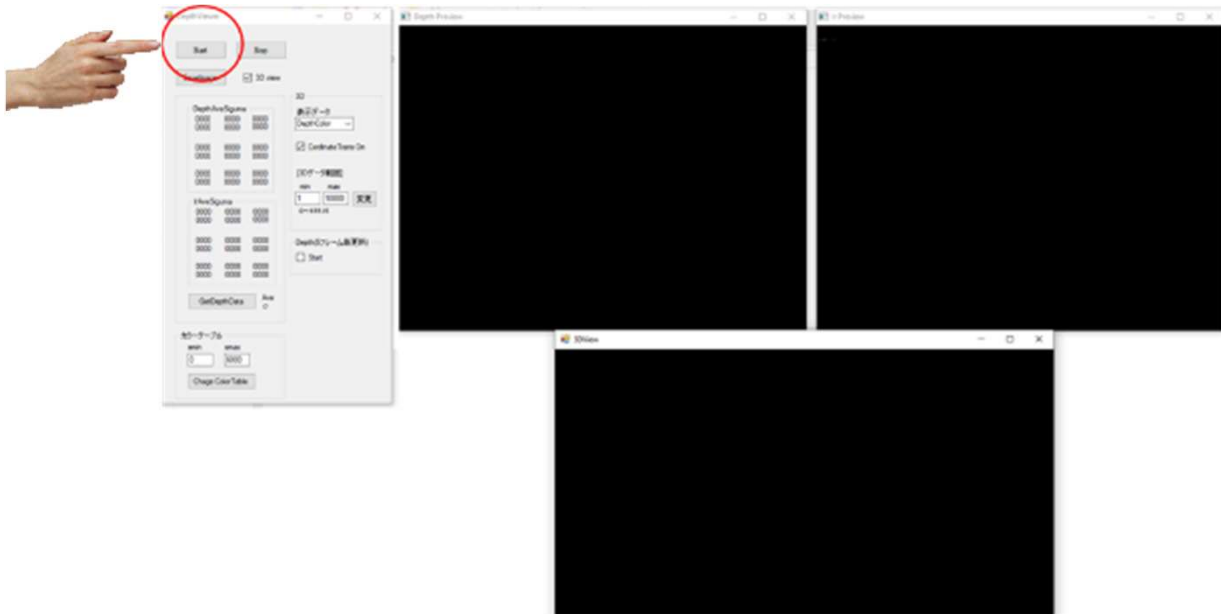


Step 6 Click on [DepthViewer] application



Step 7

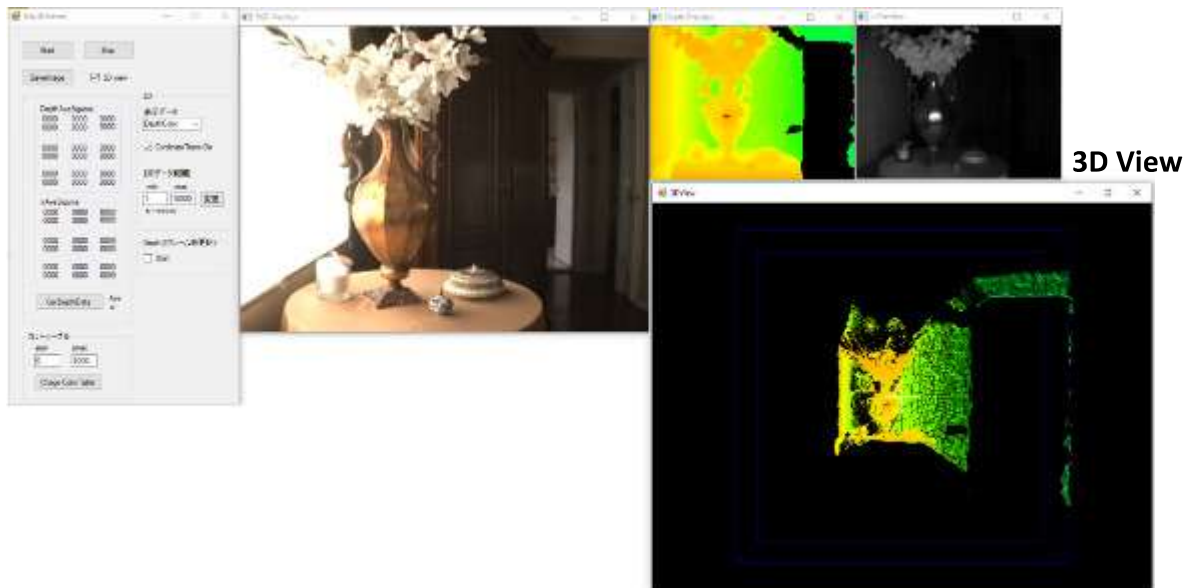
Click "Start", and wait for program to initialize, may take a minute (30~60 sec).



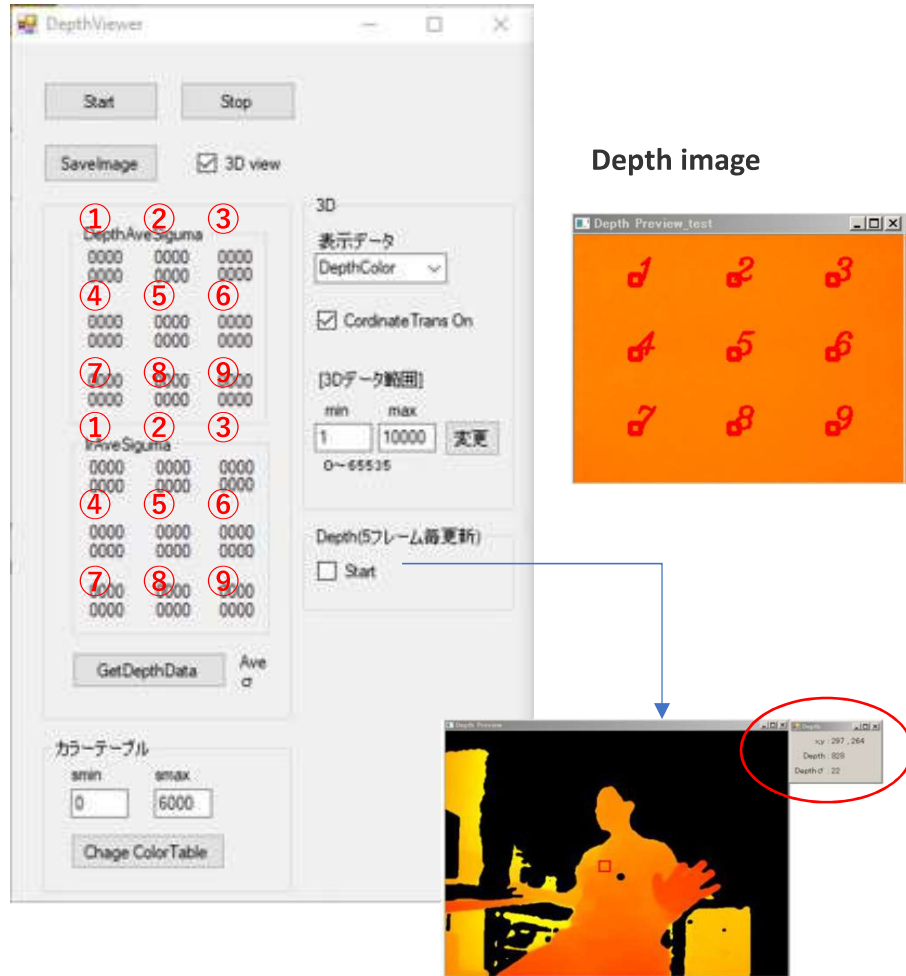
RGB View

Depth View

IR View



Menu:



- ❖ Start: Start button for camera operation
- ❖ Stop: Stop button for camera operation
- ❖ DepthAveSigma: Indicates ave. depth value & sigma at the above 9 points on image
- ❖ IrAveSigma: Indicates ave. IR value & sigma at the above 9 points on image
- ❖ GetDepthData: Ave. depth/IR value & sigma are indicated when push.
- ❖ Smin: Distance value which user would set color table as red.
- ❖ Smax: Distance value which user would set color table as blue.
- ❖ Change Color Table: User can change Color table setting when puch
- ❖ 3D: Point Cloud image
- ❖ Coordinate Trans On: Not necessary to change it. (checked)
- ❖ 3D min/max: To set distance range for Point Cloud
- ❖ Depth Start: Indication box for x-y coordinates, depth & sigma values

ToF Camera RGB, IR and Depth Images:

