

THIS DRAWING IS UNPUBLISHED.

RELEASED FOR PUBLICATION

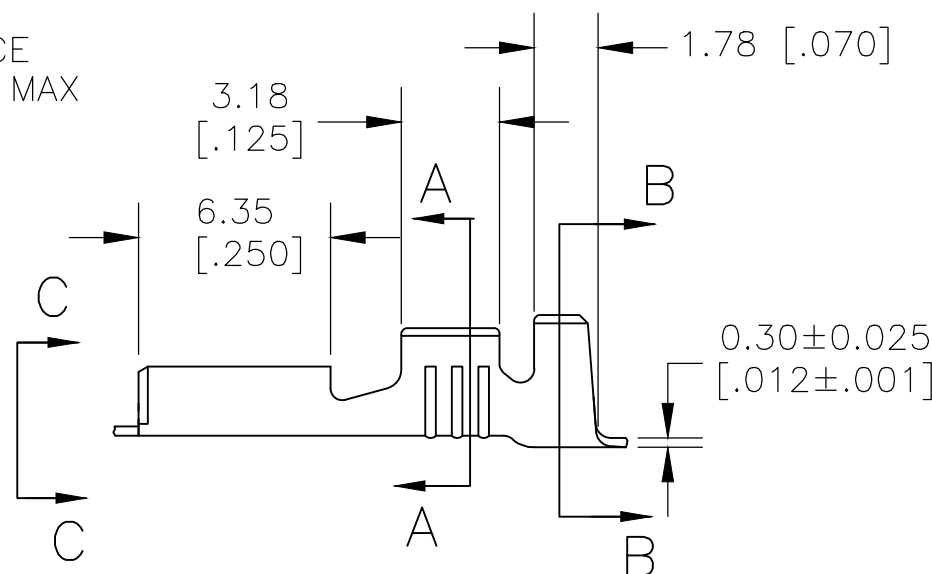
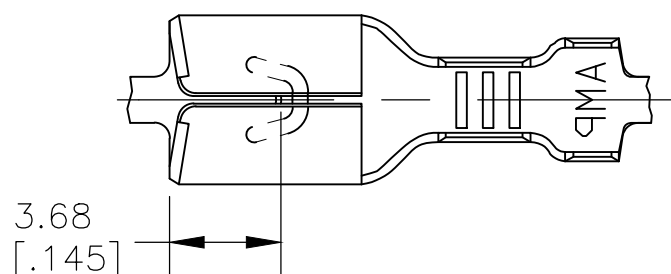
ALL RIGHTS RESERVED.

© COPYRIGHT - By -

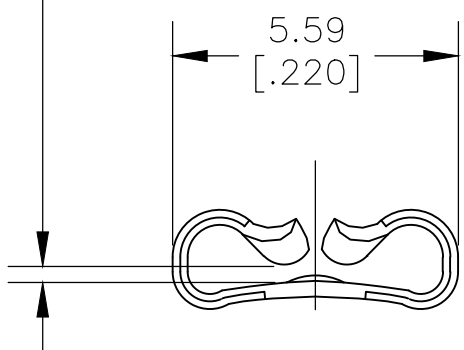
REVISIONS

P	LTR	DESCRIPTION	DATE	DWN	APVD
	A6	REVISED PER ECR-18-004893	02MAY2018	BDA	DH
	A7	REVISED PER ECR-20-009164	13JULY2020	MK	DH

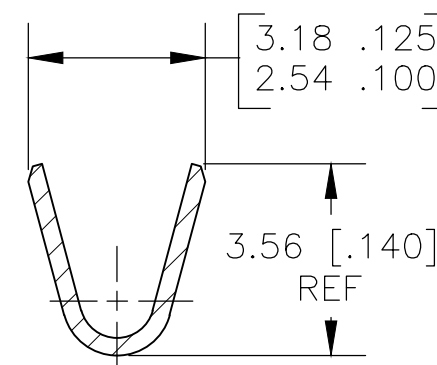
- 1 CONTINUOUS STRIP ON REELS.
- 2 WIRE SIZE #20-#16 AWG
- 3 INSULATION RANGE 2.29-3.30 [.090-.130] DIA
- 4 MATING TAB THK 0.84-0.76 [.033-.030]
- 5 UL APPROVAL FOR AWG 20-16
- 6 UL APPROVAL PENDING FOR AWG 20-16
- 7 OBSOLETE/SUPERSEDED BY PN 2238198-3



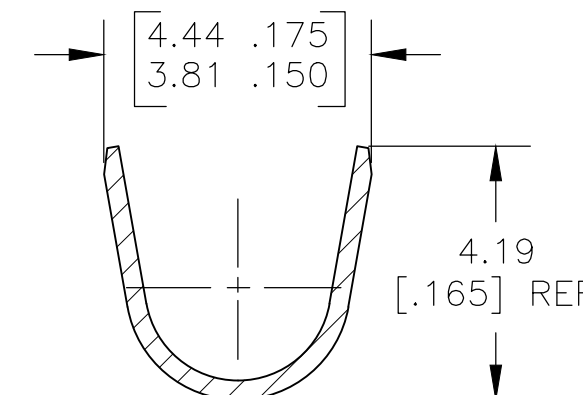
GAP AS REQUIRED TO MEET FORCE SPECIFICATIONS AND 0.71 [.028] MAX



VIEW C-C SCALE 8:1



SECTION A-A SCALE 8:1



SECTION B-B SCALE 8:1

7	6	TIN	BRASS	1742883-3
	5	NICKEL PLATE	CR STEEL	1742883-1
		FINISH	MATERIAL	PART NO

THIS DRAWING IS A CONTROLLED DOCUMENT.		DWN	jr_ruth	03MAR11	<b>STE</b> TE Connectivity		
DIMENSIONS: MM [ INCHES ]		CHK	PETE_DESANTIS	03MAR11			
TOLERANCES UNLESS OTHERWISE SPECIFIED:		APVD	PETE_DESANTIS	03MAR11	NAME		
0 PLC ± -		PRODUCT SPEC		RECEPTACLE, FASTON, .187 SERIES			
1 PLC ± -		APPLICATION SPEC		-			
2 PLC ± 0.25 [.010]		SIZE	A3	CAGE CODE	00779	DRAWING NO	C-1742883
3 PLC ± -		WEIGHT		RESTRICTED TO			
4 PLC ± -		CUSTOMER DRAWING					
ANGLES ± 5°		SCALE		4:1		SHEET 1 OF 1	
MATERIAL	SEE TABLE	FINISH		SEE TABLE		REV A7	