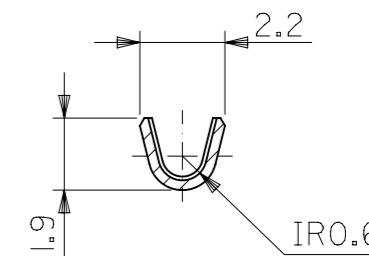
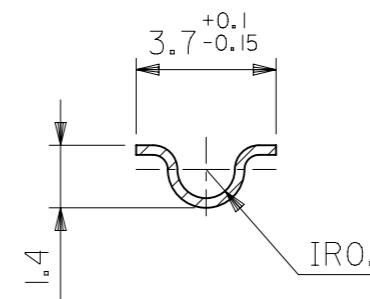


SECT. A-A



SECT. B-B



SECT. C-C

注記 NOTES:

- 1. 一般公差 : ± 0.4
GENERAL TOLERANCES : ± 0.4

材料 MATERIAL	黄銅 BRASS 0.264t
仕上げ FINISH	— // —
適用電線範囲 WIRE RANGE	AWG#24-#28
被覆外径 INS. RANGE	$\Phi 0.8 \sim 1.5$

ニッケル (2 μm MIN.) 下地 金 (0.35 μm MIN.) GOLD (0.35 μm MIN.) OVER NICKEL (2 μm MIN.)	39-00-0325	1434G	連鎖状端子 CHAIN
メッキ PLATING	EDP.NO.	ENG.NO.	形状 FORM

THIS DRAWING CONTAINS INFORMATION THAT IS PROPRIETARY TO MOLEX ELECTRONIC TECHNOLOGIES, LLC AND SHOULD NOT BE USED WITHOUT WRITTEN PERMISSION									
DIMENSION UNITS	SCALE	CURRENT REV DESC: OBSOLETE PART NUMBERS AS PER PCN 508518			molex				
mm	5:1								
GENERAL TOLERANCES (UNLESS SPECIFIED)		EC NO: 671087			.093 DIA. MALE TERM.				
		DRWN: RPRABHUM 2021/05/25			PRODUCT CUSTOMER DRAWING				
		CHK'D: GGA 2021/08/06			DOCUMENT NUMBER				
		APPR: GGA 2021/08/06			SD-1434X				
		INITIAL REVISION:			DOC TYPE		DOC PART		REVISION
		DRWN: H.HASEGAWA 1993/06/18			PSD		011		K1
		APPR: M.FUKUSHIMA 1993/06/18							
DRAFT WHERE APPLICABLE MUST REMAIN WITHIN DIMENSIONS		THIRD ANGLE PROJECTION		DRAWING	SERIES	MATERIAL NUMBER	CUSTOMER		SHEET NUMBER
				A3-SIZE	1434	SEE CHART	GENERAL MARKET		1 OF 1