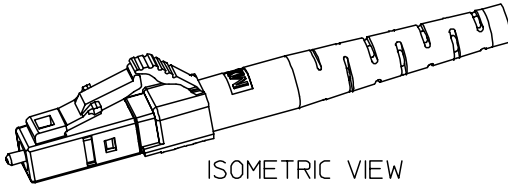
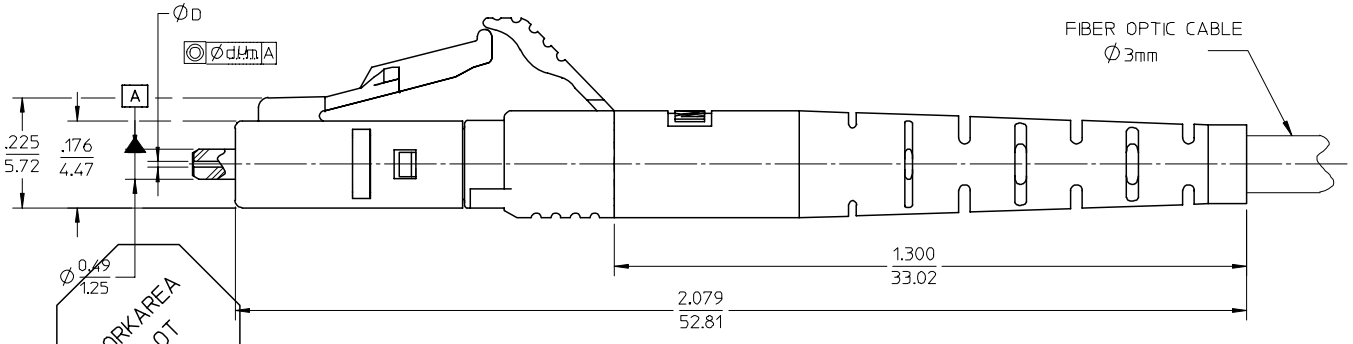
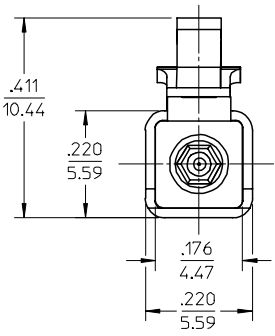
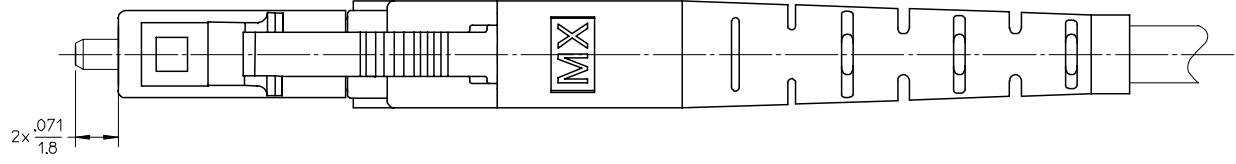


CONNECTOR P/N	ØD (µm)	Ød (µm)	CONN. BODY COLOR	CONN. BOOT COLOR
106026-2250	125.5 <sup>+0.5</sup> <sub>0</sub>	1	GREEN	GREEN
106026-4250	125 <sup>+0.5</sup> <sub>0</sub>			
106026-5250	126 <sup>+1</sup> <sub>0</sub>			
106026-6250	125.25 <sup>+0.5</sup> <sub>0</sub>			
106026-2270	125.5 <sup>+0.5</sup> <sub>0</sub>	0.5		



ISOMETRIC VIEW  
SCALE 2:1



WORK AREA PLOT

NOTES:  
1. ALL DIMENSIONS ARE FOR REFERENCE ONLY.  
2. DUST CAP IS NOT SHOWN.

ENTER DESCRIPTION	QUALITY SYMBOLS
EC NO: MF2006-0323	▽=0
DRWN:PGIBLIN	▽=0
CHKD:	
APPR:IGUMIN	
REV	
A	

DESCRIPTION
2006/02/07
2006/02/07
2006/02/07

GENERAL TOLERANCES (UNLESS SPECIFIED)	
mm	INCH
4 PLACES ± ---	± ---
3 PLACES ± ---	± ---
2 PLACES ± ---	± ---
1 PLACE ± ---	± ---
ANGULAR ±1/2°	
DRAFT WHERE APPLICABLE MUST REMAIN WITHIN DIMENSIONS	

DIMENSION STYLE	
IN/MM	
DRAWN BY	DATE
PGIBLIN	2005/11/14
CHECKED BY	DATE
APPROVED BY	DATE
MATERIAL NO.	
SEE TABLE	
SIZE	B

SCALE	4:1	DESIGN UNITS	INCH	THIRD ANGLE PROJECTION
TITLE				
LC APC CONNECTOR 3MM CABLE APPLICATION				
MOLEX INCORPORATED				
DOCUMENT NO.			SHEET NO.	
SD-106026-X250			1 OF 1	
THIS DRAWING CONTAINS INFORMATION THAT IS PROPRIETARY TO MOLEX INCORPORATED AND SHOULD NOT BE USED WITHOUT WRITTEN PERMISSION				