

# EvaluatIR-M

- Autonomous CO<sub>2</sub> evaluation
- Real time recordings of CO<sub>2</sub> levels
- Measures full suite of other environmental parameters



## About the EvaluatIR-M

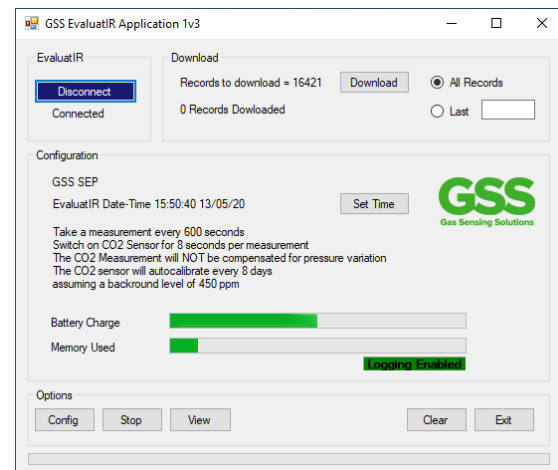
The EvaluatIR-M evaluation kit provides users with a convenient way to evaluate the GSS ExplorIR<sup>®</sup>-M CO<sub>2</sub> sensor in an easy-to-use battery-powered package. Inside, the ExplorIR<sup>®</sup>-M sensor uses patented NDIR solid-state LED optical technology to deliver consistent and accurate CO<sub>2</sub> measurements.

The EvaluatIR-M evaluation kit measures and records CO<sub>2</sub> over a 0-1% range as well as relative humidity, temperature, and barometric pressure. The evaluation kit connects to a PC via a USB port and includes software that allows the user to download the recorded data, in a format suitable for import into Excel or other data analysis tools. All recorded data is time-stamped allowing users to easily analyse CO<sub>2</sub> sensor behaviour. The evaluation kit will operate for up to 12 months on 2 x AA batteries (not included).

## In the Kit

- EvaluatIR-M Sensor Module
- USB Cable
- Protective Carry Case

## Software Interface



# EvaluatIR-M

## Ordering Information

EVALUATIR - M - X

x	Measurement Range
20	0-20%
100	0-100%



## CO<sub>2</sub> Sensor Specifications

<b>Measurement Ranges</b>	0-20%, 0-100%
<b>Accuracy (typ.)</b>	0-20% ±(70ppm +5% of reading) 0-100% ±(300ppm +5% of reading)
<b>Response Time</b>	2 Minutes (Diffusion Limited)
<b>Readings per Second</b>	2
<b>Sample Method</b>	Solid-state LED NDIR Diffusion

## Electrical and Mechanical Specifications

<b>Measurement Output</b>	USB mini to PC Application
<b>Power</b>	2 x AA Batteries
<b>Dimensions and Weight</b>	145mm x 95mm x 35mm, 225g

## Operating Conditions

<b>Operating Conditions – Temperature</b>	0°C to 50°C
<b>Operating Conditions - Humidity</b>	0-95% RH, non-condensing
<b>Storage Conditions - Temperature</b>	-40°C to +70°C
<b>Pressure Dependence</b>	0.15% of reading per mbar
<b>Environmental Compliance</b>	RoHS and REACH

## Humidity and Sensor Specification

<b>Humidity Measurement Range</b>	0-95%
<b>RH Accuracy @ +25°C</b>	±3%
<b>Repeatability @ +25°C</b>	±1%

## Temperature Sensor Specification

<b>Temperature Measurement Range</b>	0-50°C
<b>Accuracy 0- 50°C</b>	±0.5°C
<b>Repeatability @+25°C</b>	±0.1°C

## Pressure Sensor Specification

<b>Pressure Measurement Range</b>	50-110kPa
<b>Accuracy 0- 50°C</b>	±0.4kPa
<b>Repeatability @+25°C</b>	±0.05kPa