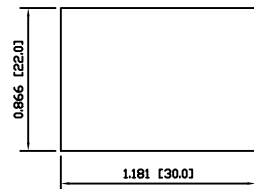
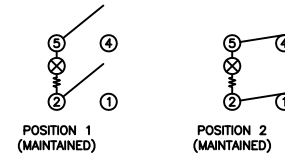


SUGGESTED PANEL CUTOUT



PANEL THICKNESS	X
0.059~0.079 [1.50~2.00]	1.165 [29.6]
0.079~0.118 [2.00~3.00]	1.181 [30.0]
0.118~0.157 [3.00~4.00]	1.197 [30.4]

SCHEMATIC



SPECIFICATIONS

FUNCTION:  
2P1T OFF-ON

RATINGS:  
ANSI/UL 508 (E195908):  
20A 125VAC [UR]  
12A 250VAC [UR]

ILLUMINATION VOLTAGE:  
125V

ELECTRICAL LIFE:  
6,000 Cycles [UR]

TEMPERATURE:  
0°C to 85°C [UR]

INGRESS PROTECTION:  
IP54

APPROVALS:  
 RoHS COMPLIANT

COLORS AND MARKINGS

BODY:  
Black

ACTUATOR:  
Position 1: Red  
Position 2: Green

LENS:  
Transparent Green

MARKING:  
I/O Horizontal (R)

MARKING COLOR:  
White

MATERIALS

BODY:  
Polyamide 6/6 (PA66+10%GF), UL94 V-0

BEZEL:  
Polyamide 6/6 (PA66), UL94 V-2

ACTUATORS:  
Polyamide 6/6 (PA66), UL94 V-2

LENS:  
Polycarbonate (PC) UL94 V-2

ACTUATION MEMBER:  
Polyamide 6/6 (PA66+10%GF), UL94 V-0

SPRING:  
Steel (65Mn)

BALL:  
Steel

ACTUATION POST:  
Steel

GASKET:  
Ethylene Propylene Rubber (EPTR)

O-RING:  
Ethylene Propylene Rubber (EPTR)

LAMP:  
Neon Bulb

RESISTOR:  
Carbon Film Resistor

CONTACTS:  
Silver Alloy Clad Copper

MOBILE CONTACT BAR:  
Silver Plated Copper (T2)

TERMINALS:  
Silver Plated Copper (H62)  
Silver Plated Brass (T2)

BODY	C	11/02/28	CAB
COLORS	A	11/03/23	CAB
MATERIALS	B	10/04/30	CAB
SPECIFICATIONS	B	10/04/27	CAB
REFERENCE	REV.	DATE	BY

THE INFORMATION CONTAINED IN THIS DOCUMENT IS PROPRIETARY TO E-SWITCH AND IS NOT TO BE COPIED OR TRANSFERRED

A	INITIAL RELEASE	19778	10/03/23	CAB
REV.	DESCRIPTION	PCR	DATE	DRAWN BY
1				

DIMENSIONS	TITLE
INCHES [MILLIMETERS]	PB242D1A2R-236
GENERAL TOLERANCES	
±0.008 [±0.2] / ±1'	
SCALE	PROJECTION
DRAWING NOT TO SCALE	34-PB242D1A2R236

PB242D1A2R-236

ITEM NUMBER	DATE	REVISION
34-PB242D1A2R236	MARCH 23, 2011	A