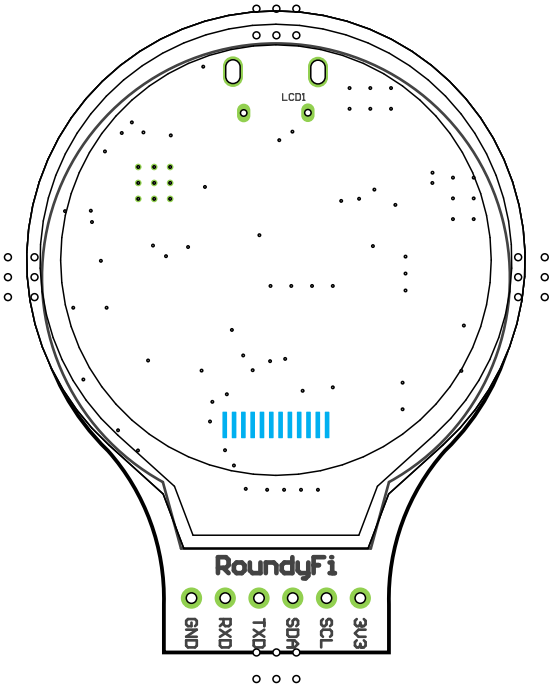
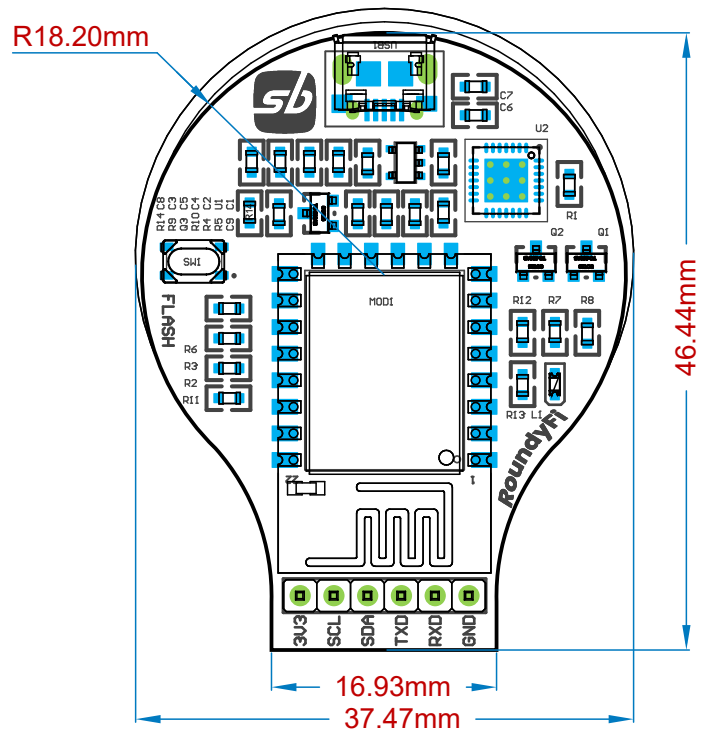
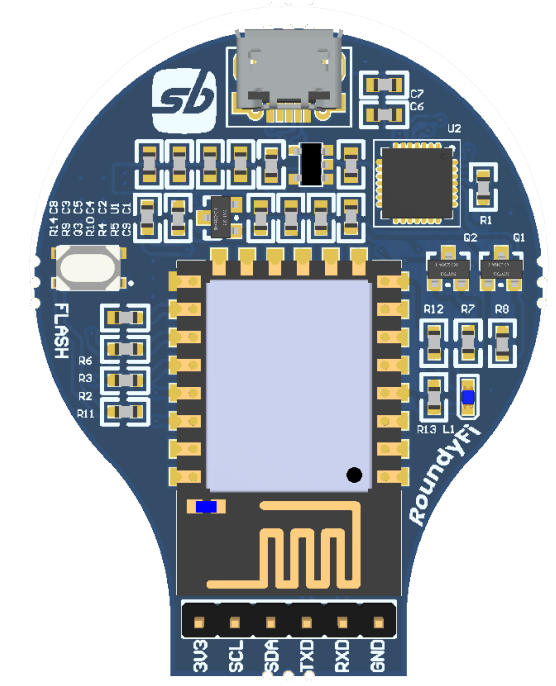


THIS DOCUMENT AND THE DATA DISCLOSED HEREIN OR HEREWITH IS THE PROPERTY OF ALTIUM LIMITED AND MAY BE FREELY DISTRIBUTED IN WHOLE. NO RIGHTS ARE RESERVED OR EXPRESS OR IMPLIED WARANTEE GIVEN.

REV STATUS OF SHEETS		REV SHEET	=DOC_NO_ASSY_DWG										REVISIONS			
ZONE	REV	DESCRIPTION	DATE	APPROVED												



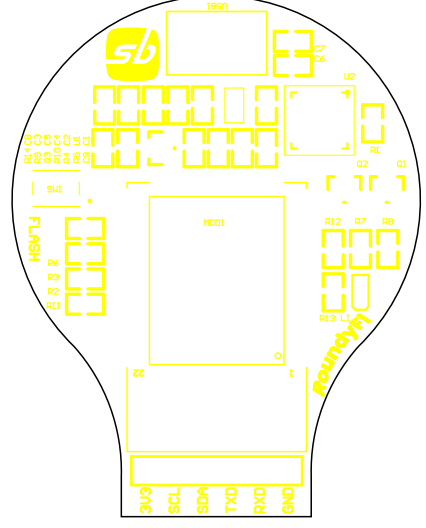
Realistic View



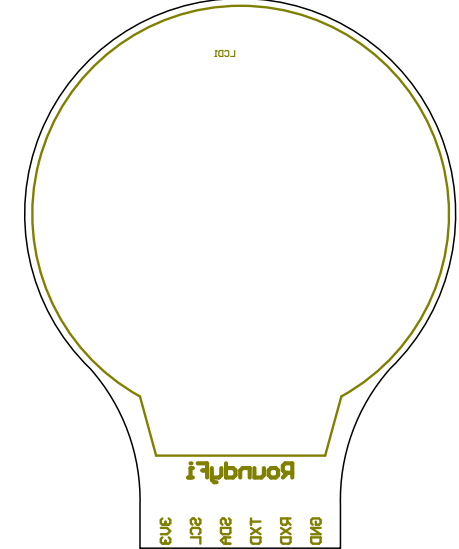
Realistic View



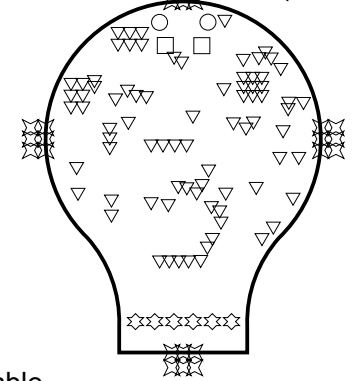
Top Overlay (Scale 1.4833:1)



Bottom Overlay (Scale 1.5657:1)



Drill Drawing View (Scale 1:1)



Drill Table

Symbol	Count	Hole Size	Plated	Hole Tolerance
▽	80	0.30mm	Plated	
□	2	0.60mm	Plated	
☆	24	0.64mm	Plated	
⊛	6	0.90mm	Plated	
○	2	1.20mm	Plated	
	114 Total			

Bill of Materials

Line #	Designator	Comment	Quantity
1	C1	1uF	1
2	C2	22nF	1
3	C3, C5, C7, C8, C9	0.1uF	5
4	C4, C6	10uF	2
5	CN1	CON6	1
6	L1	LED	1
7	LCD1	1.28 INCH LCD	1
8	MOD1	ESP8266-12E	1
9	Q1, Q2	S8050	2
10	Q3	BC817	1
11	R1, R11, R12	470E	3
12	R2, R3, R4, R5, R6, R7, R8	12K	7
13	R9	1K	1
14	R10	10K	1
15	R13	0E/NC	1
16	R14	10E	1
17	SW1	TACTILE_SWITCH	1
18	U1	RT9193-33	1
19	U2	CP2102	1
20	USB1	USB	1

PART NO: =PCB_PART_NUMBER

APPROVALS	DATE
ENGINEER: =PCB_ENGINEER	=PCB_ENGINEER
DESIGNER: =PCB_DESIGNER	=PCB_DESIGNER
CHECKER: =PCB_CHECKER	=PCB_CHECKER
BOM DOC: =DOC_NO_BOM	
ASSY DOC: =DOC_NO_FAB_DWG	
SCH DOC: =DOC_NO_SCH_DWG	
PCB DOC: =PCB_DWG_NO	

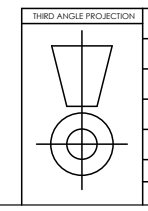
Altium =Address1
=Address2
=Address3
=Address4

DESIGN ITEM: .Item DESIGN ITEM REVISION: .ItemRevision

TITLE: =PCB_TITLE_1
=PCB_TITLE_2

SIZE: B CAGE CODE: =CAGE_CO DWG NO: REV: 1 OF 1

FILE NAME: PCB1.PCBDwf SHEET: 1 OF 1



NEXT ASSY	USED ON	APPLICATION