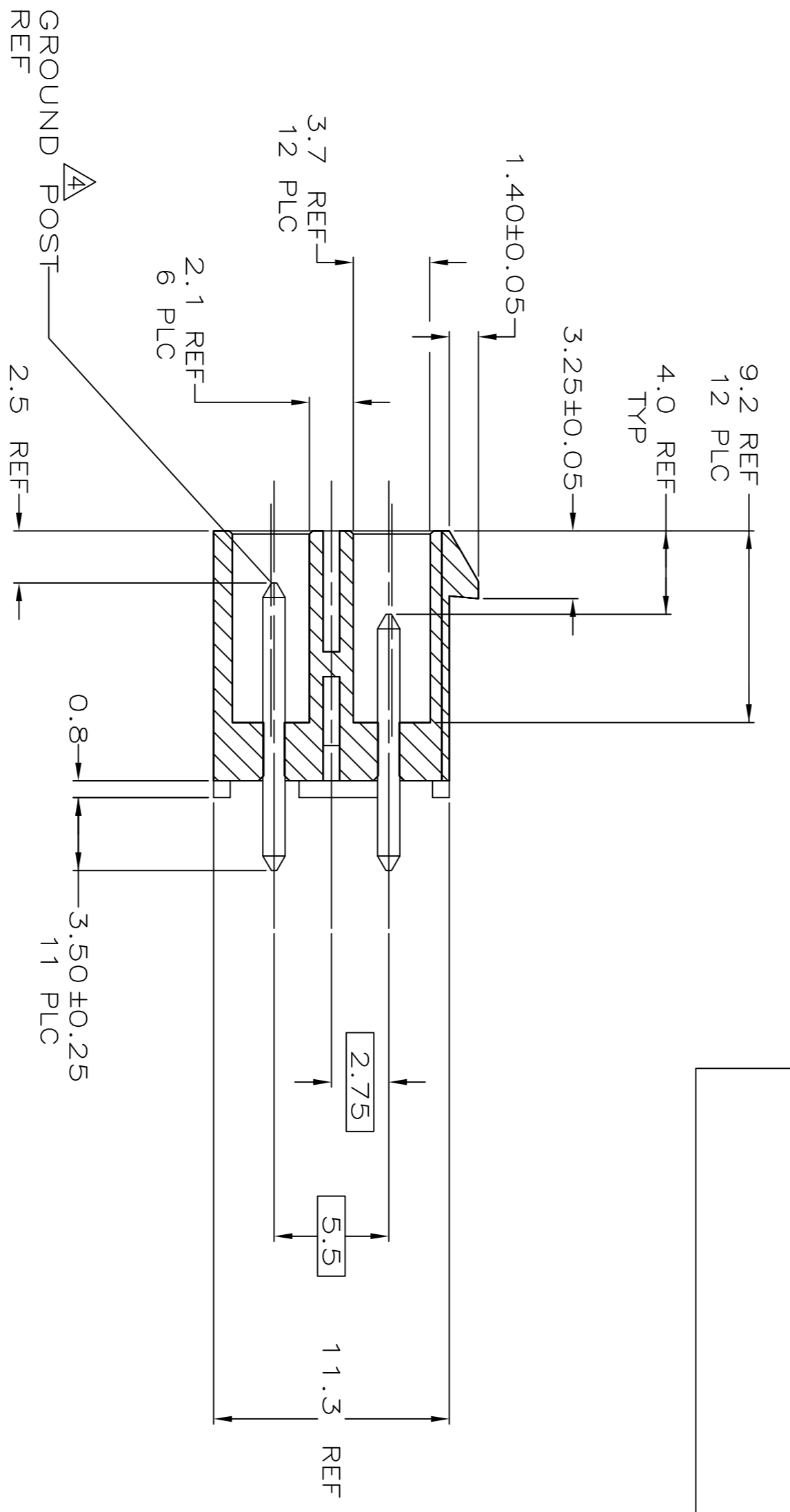
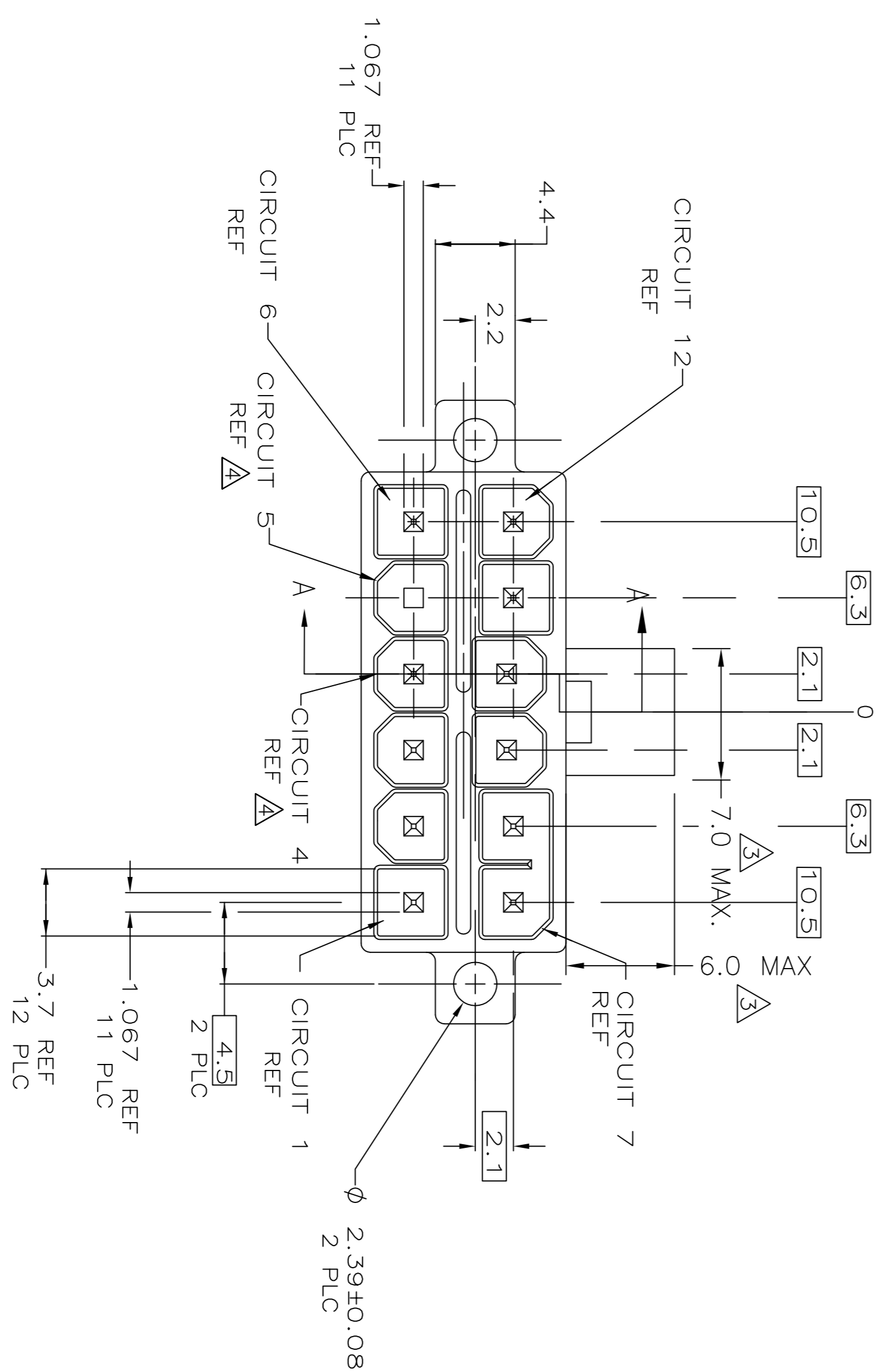


RECOMMENDED MOUNTING HOLE PATTERN FOR 1.78 MAX THICK P.C. BOARD COMPONENT SIDE SHOWN

- △ CONTACT: 0.00076 GOLD AT INTERFACE. 0.00254 MIN MATTE TIN ON SOLDER TAIL. 0.00127 MIN NICKEL UNDERPLATE ALL OVER.
- 2. MATES WITH AMP-DUAC/PL PLUG RECEPTACLE 794156-1 AND ITS CONTACTS.
- △ CLEARANCE ENVELOPE FOR MATING PLUG RECEPTACLE LATCH.
- △ CONTACT GROUND POST LOCATED IN CIRCUIT 4, NO CONTACT IN CIRCUIT 5. OTHER POSTS STANDARD.
- △ HOLE SUPPORTING CIRCUIT 5 NOT REQUIRED WHEN USING P/N 2232521-1

PRELIMINARY



SECTION A-A

HIGH CONDUCTIVITY COPPER ALLOY		PBT, UL94V-0		NATURAL(WHITE)		2232521-1	
MATERIAL	FINISH	MATERIAL	COLOR	PART NO			

THIS DRAWING IS A CONTROLLED DOCUMENT. ESTE PLANO ES UN DOCUMENTO CONTROLADO.		DATE / FECHA: 5/29/2013		DRAWN BY / DISEÑADO POR: ORLANDO LI		REVISED / REVISADO: 5/29/2013	
DRAWN BY / DISEÑADO POR: SUNYI ZHAO		DATE / FECHA: 5/29/2013		DRAWN BY / DISEÑADO POR: SUNYI ZHAO		REVISED / REVISADO: 5/29/2013	
MATERIAL: SEE TABLE		FINISH: SEE TABLE		MATERIAL: SEE TABLE		FINISH: SEE TABLE	
CUSTOMER DRAWING/PLANO DE CLIENTE: A1100779		SCALE: 4:1		SHEET: 1 OF 1		REV: 5	

REV	DESCRIPTION	DATE	BY
5	INITIAL RELEASE	10/21/2013	OL SZ