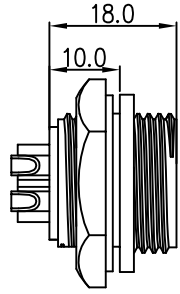


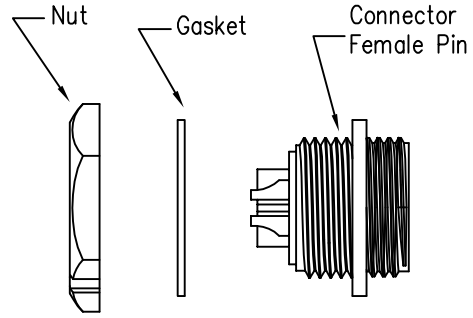
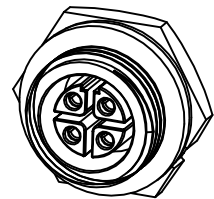
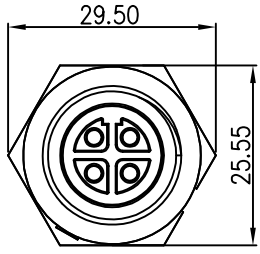
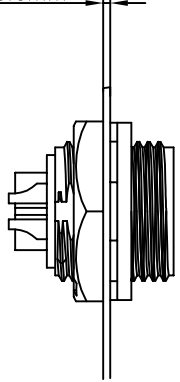
REV.	ECN NO.	DESCRIPTION	SIGN	DATE
C1	N/A	INITIAL DRAWING	Liu	2020/05/16



Recommended Panel Cut-Out

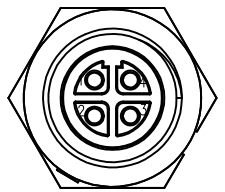


Panel T: Max 3.5mm



- Specification:
- 1.Operation Temperature:  $-45^{\circ}\text{C} \sim 105^{\circ}\text{C}$ .
  - 2.Insulation Resistance:  $100\text{M}\Omega$  at DC500V.
  - 3.Contact Resistance:  $<10\text{m}\Omega$ .
  - 4.Withstand Voltage: 2000V AC
  - 5.Operating Current: 15A
  - 6.Operating Voltage: AC 300V
  - 7.Waterproof Rate: IP67 (Mated)
  - 8.Housing: Nylon, Black
  - 9.Female Pin: Copper Alloy, Gold Plated
  - 10.Gasket: Silicon Gray
  - 11.Panel Nut: Nylon, Black
  - 12.Torque Rate:  $0.8 \sim 1.0\text{N} \cdot \text{m}$
  - 13.RoHS Compliant.
  - 14.Mating Cap P/N: 806-00021-00

23XXX615-03  
Pin Number



4 Pin

P/N: 23004615-03

Pin Assignments  
Front View

UNIT:mm	
TOLERANCE	
.X	$\pm 0.25$
.XX	$\pm 0.15$
.XXX	$\pm 0.05$
ANGLES	$\pm 1^{\circ}$

DESCRIPTION Middle Series Screw Type Rear Mount With Female Pin			
SCALE:	1:1	SHEET	1 OF 1
REV.	C1	SIZE	A4
* : Inspection Item			

**CHOGORI**

PART NO	23004615-03	DRAWN BY	Liu	DATE	2020/05/16
DWG NO		CHECKED BY	Mo	DATE	2020/05/16
CUSTOMER		APPROVED BY	Panson	DATE	2020/05/16

THIS INFORMATION IS CONFIDENTIAL AND IS DISCLOSED TO YOU ON CONDITION THAT NO FURTHER DISCLOSURE IS MADE BY YOU TO OTHER THAN CHOGORI PERSONNEL WITHOUT AUTHORIZATION FROM CHOGORI CORP.