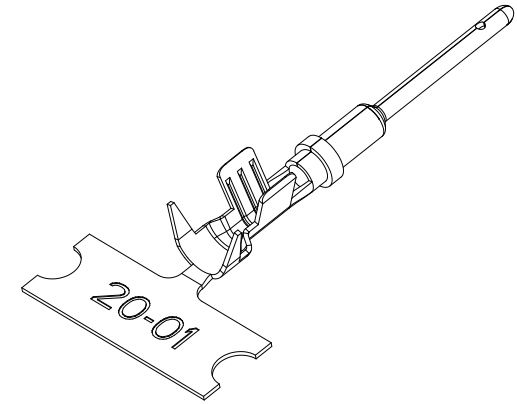
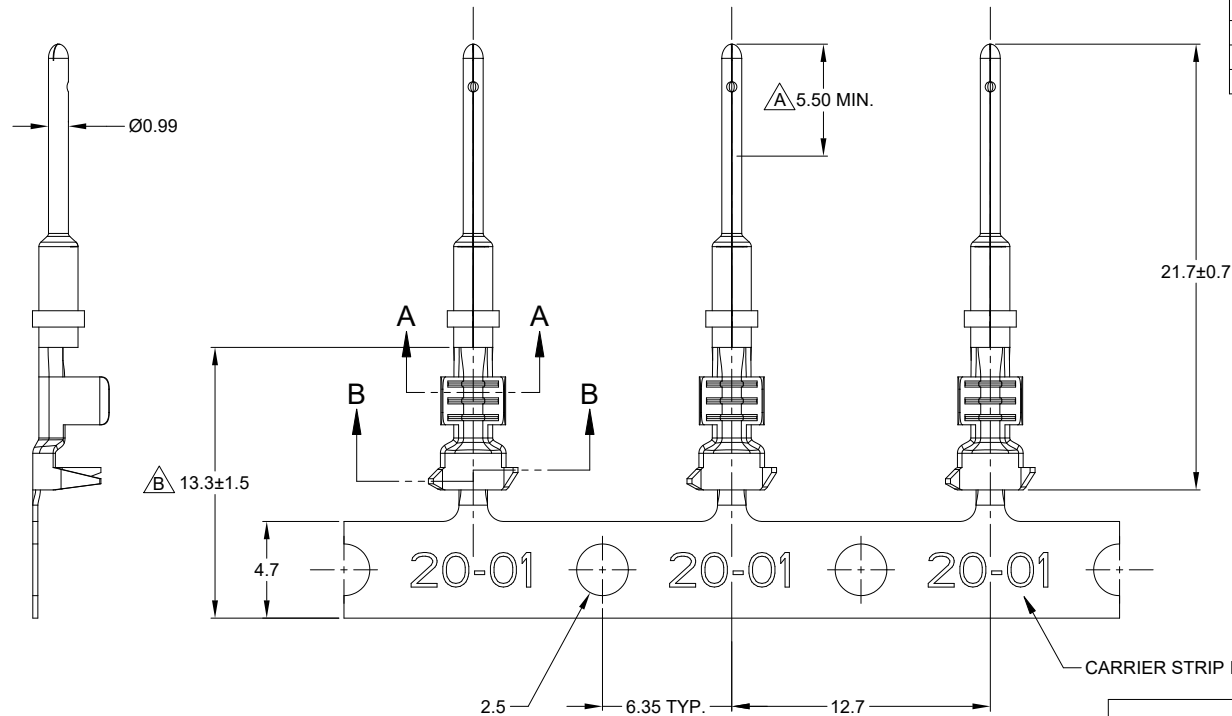
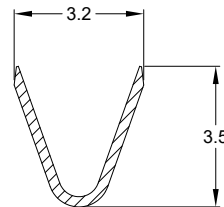


REVISIONS					
REV	ECO	DESCRIPTION	DATE	BY	APPR
A3	-	RELEASE NEW DWG FORMAT	30/JUN/13	DRP	-
A4	C0855S	CONTACT INFORMATION UPDATED	03/MAY/18	ROOKIE	TOMMY
A5	C1070S	UPDATE DRAWING	02/JUL/19	JOE	TOMMY
B1	C1298S	UPDATE PLATING	14/SEP/20	SULLEN	TOMMY

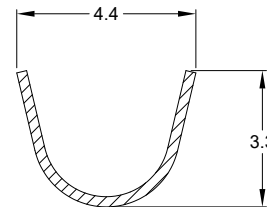


NOTES: UNLESS OTHERWISE SPECIFIED

- MATERIAL: COPPER ALLOY
- PLATING: SEE PART NUMBER CHART
- CONTACT SIZE: 20
- SPECIFICATIONS:
 - CURRENT RATING: 7.5 AMPS
 - CONTACT MILLIVOLT DROP: 100 MILLIVOLT DROP @ 7.5 AMP TEST CURRENT.
 - RoHS COMPLIANT
- RECOMMENDED WIRE RANGE: 16 - 22 AWG (1.5 - 0.35MM²)
RECOMMENDED INSUL O.D.: 1.91 - 3.15MM (0.075 - 0.125INCH)
- PACKAGE: 4000 PCS/REEL
- AVAILABLE APPLICATORS: MFX-3974-K OR MFX-3974-G
- ALL DIMENSIONS ARE FOR REFERENCE USE ONLY



SECTION A-A



SECTION B-B

PART NUMBER CHART		
PLATING	PART NUMBER	PLATING DESCRIPTION
NICKEL	AT60-20-0122	SELECTIVE TIN OVER NICKEL OVERALL IN Δ ZONE
GOLD	AT60-20-0144	SELECTIVE GOLD FLASH OVER NICKEL OVERALL IN Δ ZONE OR ENTIRE CONTACT
TIN	AT60-20-0177	TIN OVER NICKEL OVERALL

SEE PART NUMBER CHART		REF: 1060-20-0144, 1060-20-0122, 1060-20-0177		ITEM																																			
QUANTITY	PART NUMBER	DESCRIPTION																																					
<table border="1"> <thead> <tr> <th colspan="2">UNLESS OTHERWISE SPECIFIED</th> <th colspan="2">SIGNATURES</th> <th>DATE</th> </tr> </thead> <tbody> <tr> <td colspan="5">1) All dimensions are in metric (mm).</td> </tr> <tr> <td colspan="5">2) Tolerances are as follows:</td> </tr> <tr> <td>1 PL DEC ±0.30</td> <td></td> <td>SULLENZHANG</td> <td></td> <td>14/SEP/20</td> </tr> <tr> <td>2 PL DEC ±0.15</td> <td>Fractions ±1/64</td> <td>CHECKED: ORICLI</td> <td></td> <td>15/SEP/20</td> </tr> <tr> <td>3 PL DEC ±0.08</td> <td>Angles ±1°</td> <td>ENGINEER:</td> <td></td> <td></td> </tr> <tr> <td colspan="5">3) Note reference = Δ</td> </tr> </tbody> </table>					UNLESS OTHERWISE SPECIFIED		SIGNATURES		DATE	1) All dimensions are in metric (mm).					2) Tolerances are as follows:					1 PL DEC ±0.30		SULLENZHANG		14/SEP/20	2 PL DEC ±0.15	Fractions ±1/64	CHECKED: ORICLI		15/SEP/20	3 PL DEC ±0.08	Angles ±1°	ENGINEER:			3) Note reference = Δ				
UNLESS OTHERWISE SPECIFIED		SIGNATURES		DATE																																			
1) All dimensions are in metric (mm).																																							
2) Tolerances are as follows:																																							
1 PL DEC ±0.30		SULLENZHANG		14/SEP/20																																			
2 PL DEC ±0.15	Fractions ±1/64	CHECKED: ORICLI		15/SEP/20																																			
3 PL DEC ±0.08	Angles ±1°	ENGINEER:																																					
3) Note reference = Δ																																							
<table border="1"> <thead> <tr> <th colspan="2">MATERIAL SPECIFICATIONS:</th> <th colspan="3">CUSTOMER:</th> </tr> </thead> <tbody> <tr> <td colspan="5">THIS DRAWING IS SUPPLIED FOR INFORMATION ONLY. DESIGN FEATURES, SPECIFICATIONS AND PERFORMANCE DATA SHOWN HEREON ARE THE PROPERTY OF THE AMPHENOL CORPORATION. NO RIGHTS OF REPRODUCTION ARE IMPLIED. ALL DIMENSIONS ARE SUBJECT TO NORMAL MANUFACTURING VARIATIONS.</td> </tr> </tbody> </table>					MATERIAL SPECIFICATIONS:		CUSTOMER:			THIS DRAWING IS SUPPLIED FOR INFORMATION ONLY. DESIGN FEATURES, SPECIFICATIONS AND PERFORMANCE DATA SHOWN HEREON ARE THE PROPERTY OF THE AMPHENOL CORPORATION. NO RIGHTS OF REPRODUCTION ARE IMPLIED. ALL DIMENSIONS ARE SUBJECT TO NORMAL MANUFACTURING VARIATIONS.																													
MATERIAL SPECIFICATIONS:		CUSTOMER:																																					
THIS DRAWING IS SUPPLIED FOR INFORMATION ONLY. DESIGN FEATURES, SPECIFICATIONS AND PERFORMANCE DATA SHOWN HEREON ARE THE PROPERTY OF THE AMPHENOL CORPORATION. NO RIGHTS OF REPRODUCTION ARE IMPLIED. ALL DIMENSIONS ARE SUBJECT TO NORMAL MANUFACTURING VARIATIONS.																																							
<table border="1"> <thead> <tr> <th>SIZE</th> <th>TYPE</th> <th>DWG NO.</th> <th>REVISION</th> </tr> </thead> <tbody> <tr> <td>B</td> <td>C-</td> <td>AT60-20-01XX</td> <td>B1</td> </tr> </tbody> </table>					SIZE	TYPE	DWG NO.	REVISION	B	C-	AT60-20-01XX	B1																											
SIZE	TYPE	DWG NO.	REVISION																																				
B	C-	AT60-20-01XX	B1																																				
<table border="1"> <thead> <tr> <th>SCALE</th> <th>SHEET</th> <th>OF</th> </tr> </thead> <tbody> <tr> <td>NONE</td> <td>1</td> <td>1</td> </tr> </tbody> </table>					SCALE	SHEET	OF	NONE	1	1																													
SCALE	SHEET	OF																																					
NONE	1	1																																					

TITLE: CONTACT, PIN, STAMPED, SIZE 20, 16-22 AWG, A SERIES
 DWG NO: AT60-20-01XX
 REV: B1
 SH: 1
 OF: 1