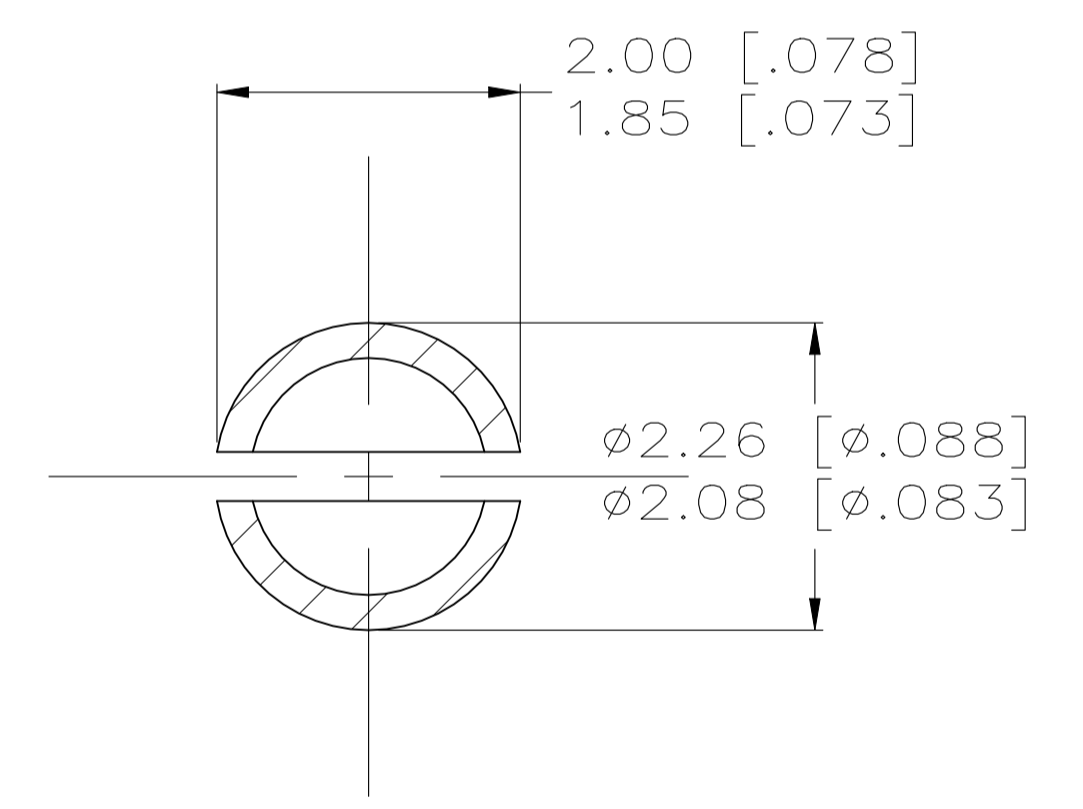
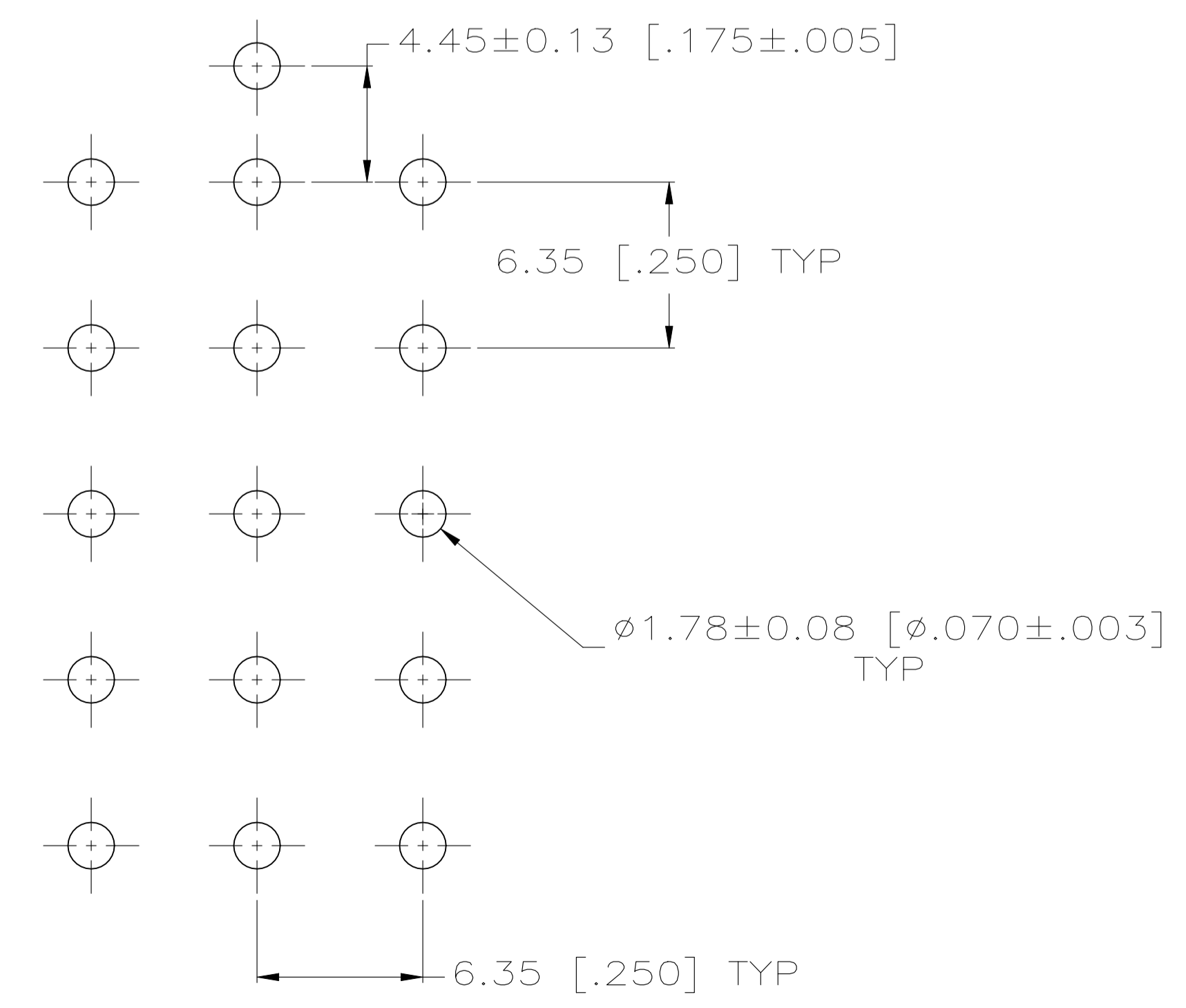


- REVISIONS
- | REV | DATE | DESCRIPTION | BY | APP'D |
|-----|-----------|---------------------------|-----|-------|
| K3 | 22JUL2022 | REVISED PER ECR-21-118222 | AVN | VS |
- PARTS MUST COMPLY WITH AMP SOLDERABILITY SPEC 109-11-3.
 - MATES WITH HOUSING NO. 350736 USING SOCKET CONTACTS.
 - CONTACT IS STAMPED FROM PRE-PLATED STOCK WHICH IS PLATED OVERALL WITH 0.00127 [.000050] NICKEL, THEN STRIPED WITH 0.00076 [.000030] GOLD IN CONTACT AREA INDICATED AND TIN-LEAD ON SOLDER TAIL END.
 - CONTACT IS PLATED OVERALL WITH 0.00127 [.000050] NICKEL, THEN 0.00076 [.000030] GOLD OVER CONTACT LENGTH INDICATED AND MATTE TIN ON SOLDER TAIL END.
 - SUPERSEDED BY 641976-4
 - DIMENSIONS SHOWN REPRESENT PRODUCT IN DRY CONDITION. ADDITIONAL 2% GROWTH DUE TO END USE LOCATION MOISTURE ABSORPTION MAY OCCUR AND SHOULD BE ACCOUNTED FOR.

0.25 [.010] MAX CUT-OFF



SECTION A-A
SCALE 12:1



RECOMMENDED LAYOUT FOR 1.58 [.062] THICK PC BOARD

PH BRZ GOLD $\triangle 4$	NYLON, UL94V-0	641976-4
PH BRZ GOLD $\triangle 3$	NYLON, UL94V-0	641976-2
PH BRZ TIN	NYLON, UL94V-0	641976-1
CONTACT	HOUSING	PART NO

THIS DRAWING IS A CONTROLLED DOCUMENT.

DIMENSIONS: mm [INCHES]	TOLERANCES UNLESS OTHERWISE SPECIFIED:	DIN K. WHITAKER 14OCT2005	TE Connectivity
0. PLC ±	1. PLC ±	19-NOV-2003	
2. PLC ±	3. PLC ± 0.13 [.005]	APVD S. RIDGILL 19-NOV-2003	NAME
4. PLC ±	ANGLES ±	PRODUCT SPEC	APPLICATION SPEC
MATERIAL SEE CHART	FINISH	WEIGHT 0.000000	SIZE CAGE CODE DRAWING NO
		A1 00779	RESTRICTED TO
		641976	CUSTOMER DRAWING
		SCALE 5:1	SHEET 1 of 1
		REV K3	