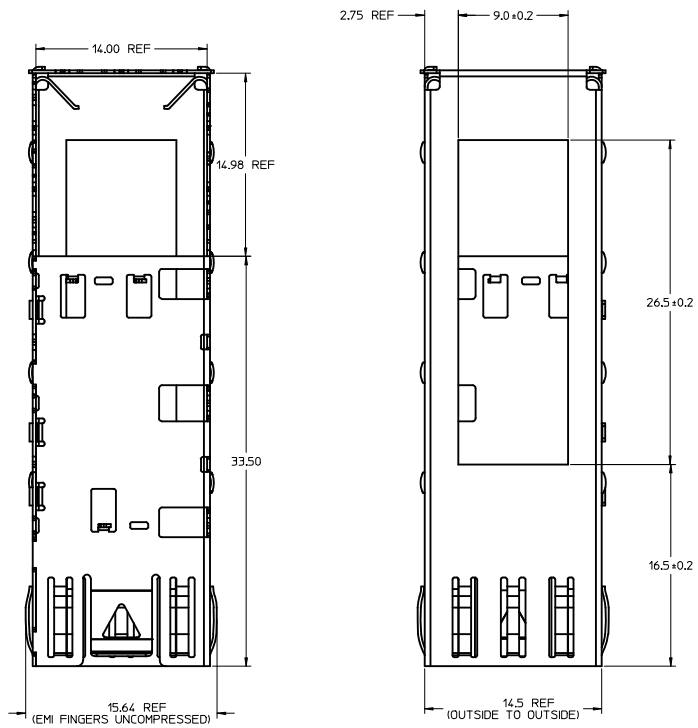


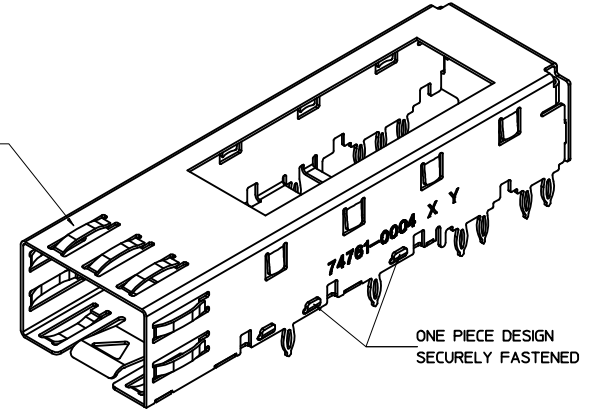
MM 3D MODEL: TM-11112-0001



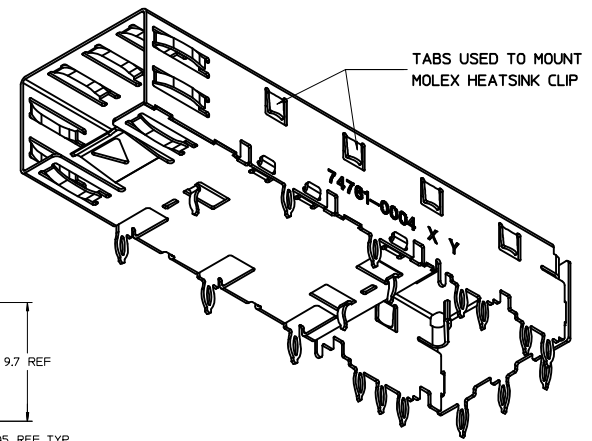
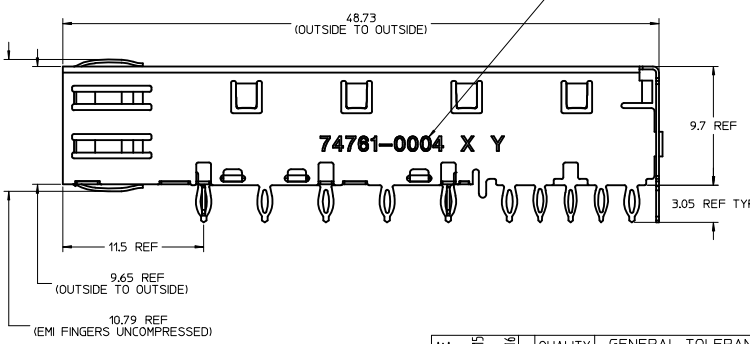
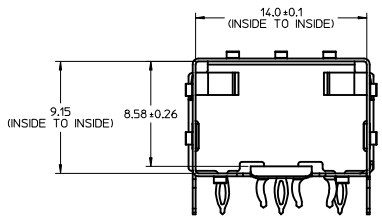
BASE CAGE DETAIL

747610004

SPRING FINGERS WITH TWO POINTS OF CONTACT. COMPLIES WITH SFP MSA BOARD AND BEZEL LOCATIONS.



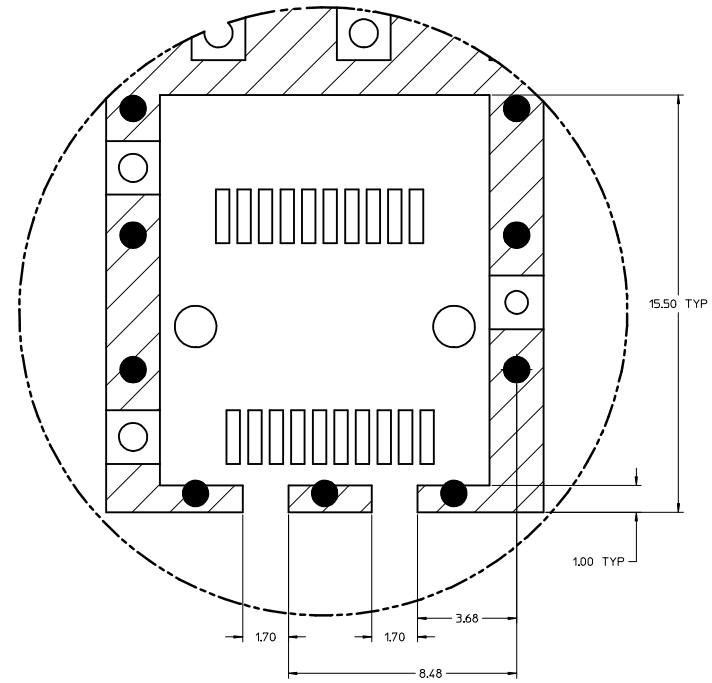
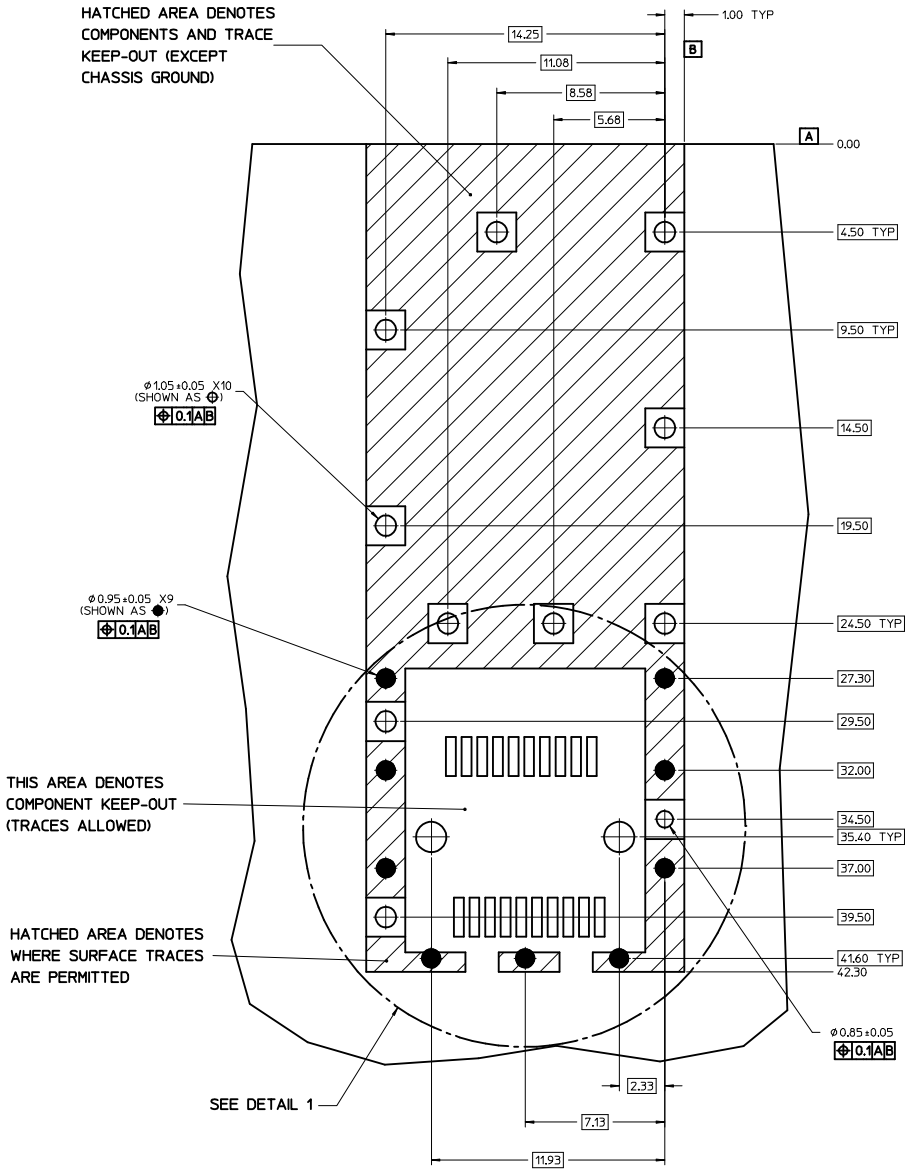
DIE STAMPED MARKING IN THE APPROXIMATE AREA SHOWN MUST NOT EXCESSIVELY DISTORT THE OUTSIDE SURFACE:
 MATERIAL NUMBER
 X = TOOL NUMBER (IDENTIFICATION FOR NEW TOOLS BUILT)
 Y = CAGE REVISION LETTER. CURRENT REVISION LETTER IS E.



- NOTES:
1. MATERIAL
 CAGE: 0.25mm THICK COPPER ALLOY, NICKEL PLATED
 HEATSINKS: NICKEL PLATED ALUMINUM
 HEATSINK CLIP: STAINLESS STEEL
 2. CAGE ASSEMBLY, HEAT SINK, AND CLIP SHIPPED ASSEMBLED.
 3. MATES WITH SFP MSA COMPLIANT TRANSCEIVERS.
 4. NO RoHS EXEMPTIONS.
 5. THE TOP SURFACE OF THE MODULE MUST BE FLAT (NO PRODUCT LABEL RECESS) AND THERMALLY CONDUCTIVE TO FUNCTION OPTIMALLY WITH A HEATSINK.

SEE REVISION TABLE IEC NO: CPG2016-1607 DRAWN BY: DRWNLU20 CHKD: APPR:RCHEN08 DATE: 2015/10/15	QUALITY SYMBOLS	GENERAL TOLERANCES (UNLESS SPECIFIED)	DIMENSION STYLE	SCALE	DESIGN UNITS	THIRD ANGLE PROJECTION
	▽=0	4 PLACES ± mm	MM ONLY	5:1	METRIC	☉
	▽=0	3 PLACES ± 0.13	INCH			
	▽=0	1 PLACE ± 0.25				
		ANGULAR ± 1°	DRAWN BY: JHATTON	DATE: 2012/09/10	TITLE: SFP SINGLE PORT CAGE ASSEMBLY WITH HEATSINKS	
		DRAFT WHERE APPLICABLE MUST REMAIN WITHIN DIMENSIONS	CHECKED BY: JREEVES	DATE: 2012/10/26	DOCUMENT NO. SD-11112-1000	
			APPROVED BY: K LLOYD	DATE: 2012/10/31	SHEET NO. 1 OF 5	
			MATERIAL NO. SEE SHEET 2		THIS DRAWING CONTAINS INFORMATION THAT IS PROPRIETARY TO MOLEX INCORPORATED AND SHOULD NOT BE USED WITHOUT WRITTEN PERMISSION	

PCB LAYOUT - SINGLE SIDE MOUNT

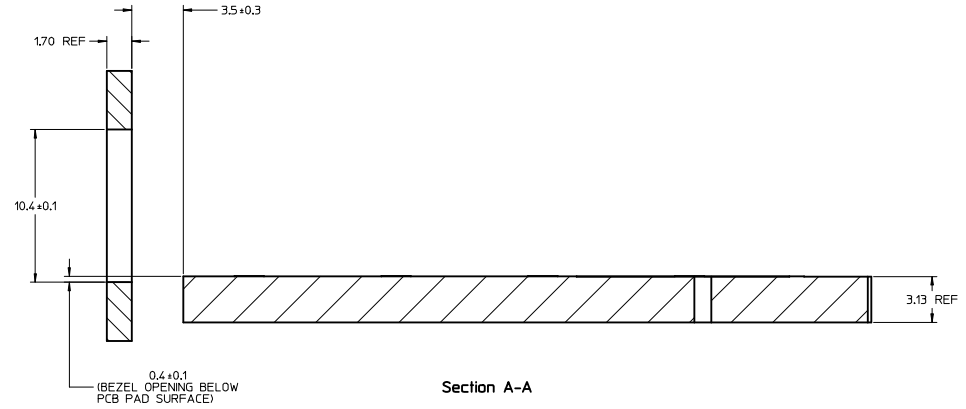
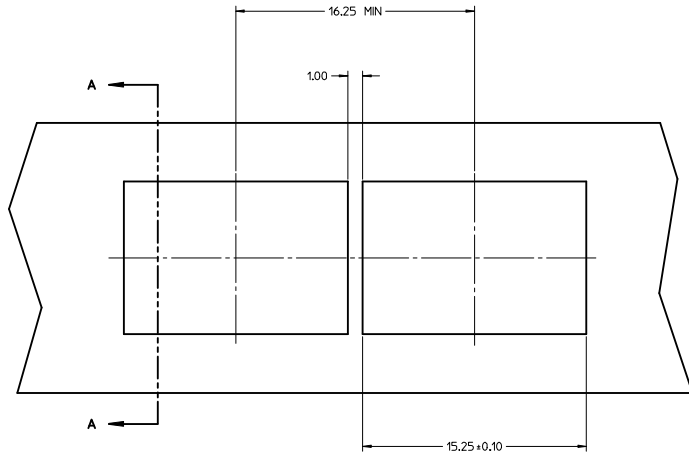
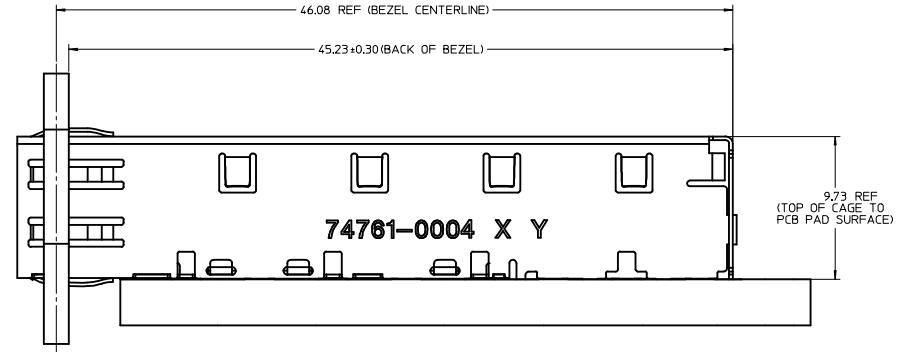


NOTES:

1. PADS AND VIAS CONNECT TO CHASSIS GROUND. (RECOMMENDED PADS TO BE 2.00mm SQUARE).
2. RECOMMENDED THRU HOLE PLATING INCLUDES HASL, OSP, OR IMMERSION (GOLD, SILVER, OR TIN).
3. CONNECTOR PAD LAYOUT PER SFP MSA, WILL ACCOMODATE MOLEX CONNECTOR SERIES 74441 OR EQUIVALENT.

SEE REVISION TABLE IEC NO: CPG2016-1607 DRAWN BY: DRWNLU20 CHYK: APPR:RCHEN08 DATE: 2015/10/15 DESCRIPTION:	QUALITY SYMBOLS	GENERAL TOLERANCES (UNLESS SPECIFIED)	DIMENSION STYLE	SCALE	DESIGN UNITS	THIRD ANGLE PROJECTION
	▽=0	mm INCH	MM ONLY	8:1	METRIC	☉
	▽=0	4 PLACES ±0.13	DRAWN BY: JHATTON	DATE: 2012/09/10	TITLE: SFP SINGLE PORT CAGE ASSEMBLY WITH HEATSINKS	
	▽=0	2 PLACES ±0.25	CHECKED BY: JREEVES	DATE: 2012/10/26	APPROVED BY: KLOYD	DATE: 2012/10/31
	ANGULAR ± 1°	DRAFT WHERE APPLICABLE MUST REMAIN WITHIN DIMENSIONS	MATERIAL NO.	SEE SHEET 2	DOCUMENT NO.	SHEET NO.
					SD-111112-1000	3 OF 5
			THIS DRAWING CONTAINS INFORMATION THAT IS PROPRIETARY TO MOLEX INCORPORATED AND SHOULD NOT BE USED WITHOUT WRITTEN PERMISSION			

BEZEL AND BOARD DIMENSIONS FOR SINGLE SIDE MOUNTING



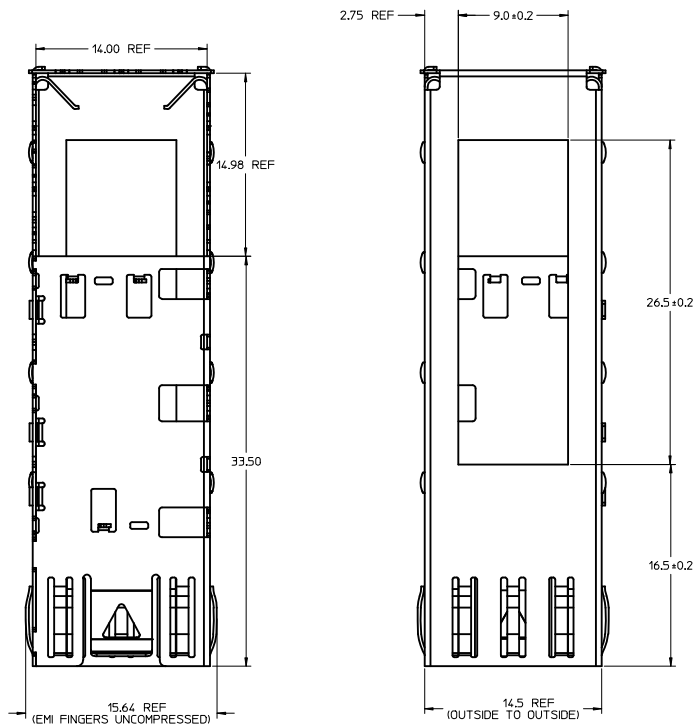
NOTE:
1. PCB THICKNESS VARIATION MUST BE CONSIDERED WHEN DETERMINING BEZEL OPENING, SIZE, AND LOCATION.

SEE REVISION TABLE IEC NO: CPG2016-1607 DRAWN: LLO20 CHKD: APPR: RCHEN08 2015/10/15 2015/10/16	QUALITY SYMBOLS	GENERAL TOLERANCES (UNLESS SPECIFIED)	DIMENSION STYLE	SCALE	DESIGN UNITS	THIRD ANGLE PROJECTION	
	▽=0	mm INCH	MM ONLY	6:1	METRIC		
	▽=0	4 PLACES ± --- ± ---					
	▽=0	3 PLACES ± --- ± ---					
		ANGULAR ± 1°					
		DRAFT WHERE APPLICABLE MUST REMAIN WITHIN DIMENSIONS					
			DRAWN BY DATE			TITLE	
			JHATTON 2012/09/10			SFP SINGLE PORT CAGE ASSEMBLY WITH HEATSINKS	
			CHECKED BY DATE				
			JREEVES 2012/10/26				
			APPROVED BY DATE				
			KLLOYD 2012/10/31				
			MATERIAL NO.			DOCUMENT NO.	
			SEE SHEET 2			SD-111112-1000	
						SHEET NO.	
						4 OF 5	
			THIS DRAWING CONTAINS INFORMATION THAT IS PROPRIETARY TO MOLEX INCORPORATED AND SHOULD NOT BE USED WITHOUT WRITTEN PERMISSION				

DATE (YEAR/MONTH/DAY)	REV	DESCRIPTION
2012/09/11	A	INITIAL RELEASE
2013/01/03	B	SHEET 1: CHANGED CODE PRINTED ON CAGE. REMOVED WKYR CODE AND ADDED TOOL # AND REV. CHANGED CODE NOTE TO INDICATE CURRENT CAGE REVISION AS C. CHANGED HEATSINK MATERIAL TO NICKEL PLATED ALUMINUM. SHEET 2: UPDATED VEIW OF CUSTOM HEATSINK TO REFLECT CHANGES. CHANGED DIM FOR CUSTOM HEATSINK SHORT PINS TO 19.55 MAX AND LONG PINS TO 2.55 MAX. SHEET 3: REMOVED INCH DIMS FROM HOLE CALLOUTS AND INDICATED NUMBER OF EACH TYPE. ADDED TYP TO 1.00 DIM ON PCB. REMOVED ALL DIMS ON LOWER EDGE OF PCB DETAIL AND RE-DIMENSIONS ACCORDING TO STANDARD. SHEET 4: SUPRESSED TRAILING ZEROES ON DIM 3.50 ON SECTION A-A.
2013/03/26	C	ADDED TRIANGLE FRAMED *1* TO DIMENSION *19.55 MAX* ON SHEET 2.
2015/10/15	D	SHEET 1: F12: CHANGED REVISION LETTER FROM C TO E. B19: REMOVED 'LEAD FREE' ON NOTE 4. SHEET 3: I19, G19 AND C12: FOR FOLLOW SFP MSA, MODIFIED TRUE POSITION TOLERANCE FROM 0.05 TO 0.1.

SEE REVISION TABLE IEC NO: CPG2016-1607 DRAWN BY: DRWNLU20 CHYKD: APPR:RCHEN08 2015/10/15 2015/10/16	QUALITY SYMBOLS	GENERAL TOLERANCES (UNLESS SPECIFIED)	DIMENSION STYLE	SCALE	DESIGN UNITS	THIRD ANGLE PROJECTION
	▽=0	4 PLACES ± mm INCH	MM ONLY	1:1	METRIC	☉
	▽=0	3 PLACES ± 0.13				
	▽=0	2 PLACES ± 0.25				
		0 PLACE ±				
		ANGULAR ± 1°				
		DRAFT WHERE APPLICABLE MUST REMAIN WITHIN DIMENSIONS				
			DRAWN BY: JHATTON DATE: 2012/09/10		TITLE	SFP SINGLE PORT CAGE ASSEMBLY WITH HEATSINKS
			CHECKED BY: JREEVES DATE: 2012/10/26			
			APPROVED BY: KLLLOYD DATE: 2012/10/31			
			MATERIAL NO.		DOCUMENT NO.	SHEET NO.
			SEE SHEET 2		SD-111112-1000	5 OF 5
			THIS DRAWING CONTAINS INFORMATION THAT IS PROPRIETARY TO MOLEX INCORPORATED AND SHOULD NOT BE USED WITHOUT WRITTEN PERMISSION			

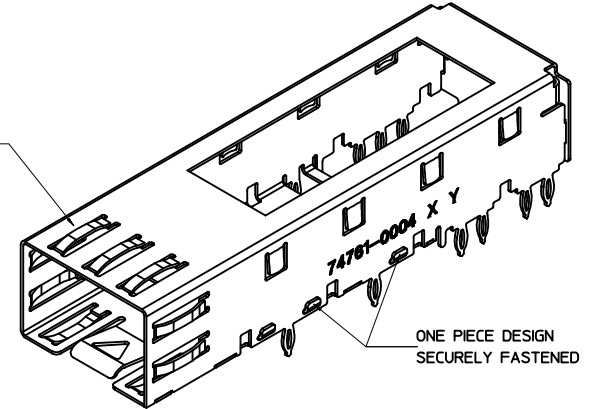
MM 3D MODEL: TM-11112-0001



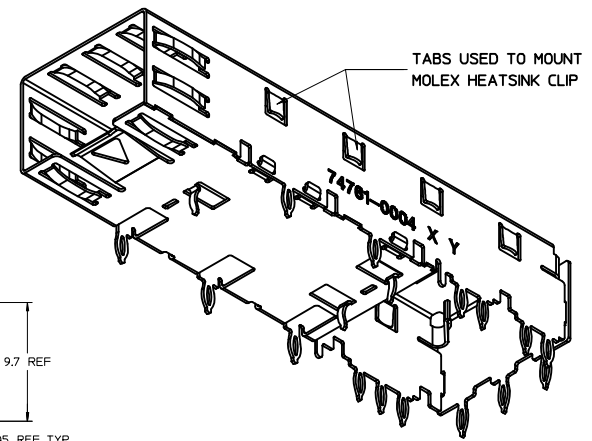
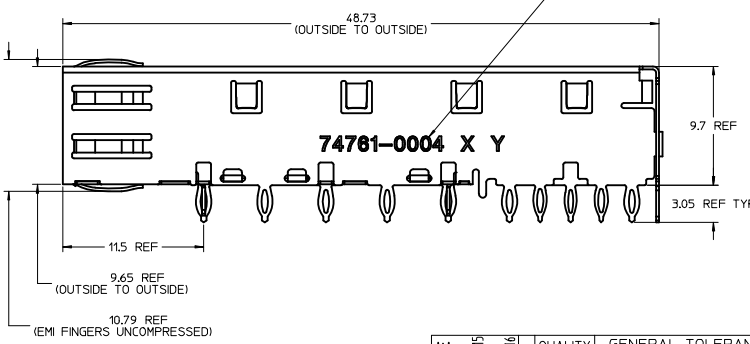
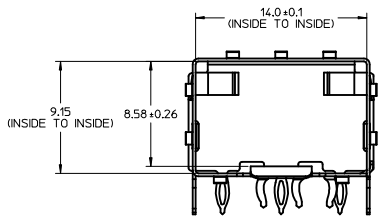
BASE CAGE DETAIL

747610004

SPRING FINGERS WITH TWO POINTS OF CONTACT. COMPLIES WITH SFP MSA BOARD AND BEZEL LOCATIONS.



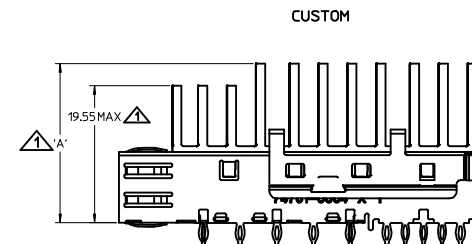
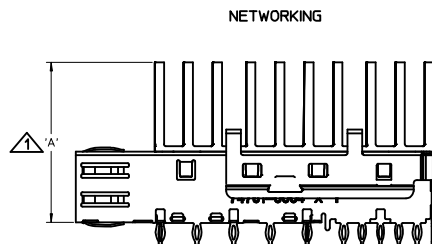
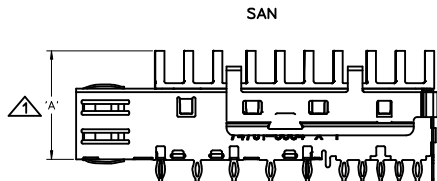
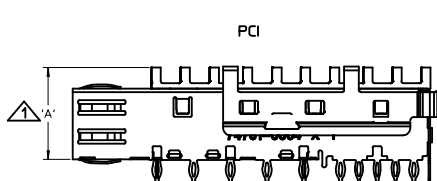
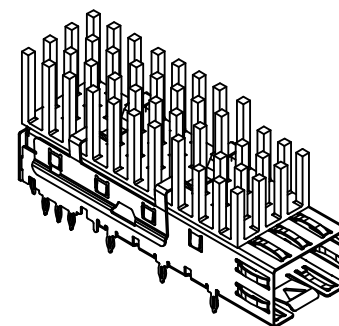
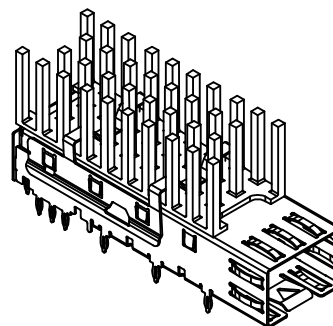
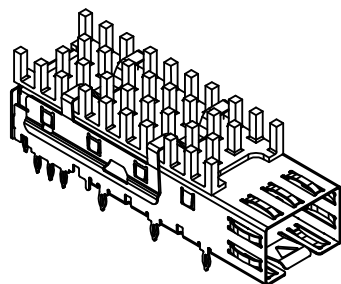
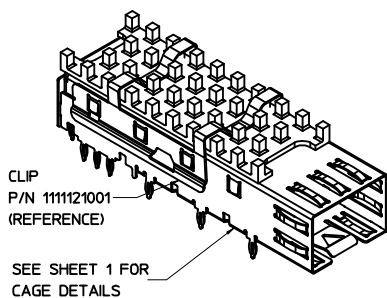
DIE STAMPED MARKING IN THE APPROXIMATE AREA SHOWN MUST NOT EXCESSIVELY DISTORT THE OUTSIDE SURFACE:
 MATERIAL NUMBER
 X = TOOL NUMBER (IDENTIFICATION FOR NEW TOOLS BUILT)
 Y = CAGE REVISION LETTER. CURRENT REVISION LETTER IS E.



- NOTES:
1. MATERIAL
 CAGE: 0.25mm THICK COPPER ALLOY, NICKEL PLATED
 HEATSINKS: NICKEL PLATED ALUMINUM
 HEATSINK CLIP: STAINLESS STEEL
 2. CAGE ASSEMBLY, HEAT SINK, AND CLIP SHIPPED ASSEMBLED.
 3. MATES WITH SFP MSA COMPLIANT TRANSCEIVERS.
 4. NO RoHS EXEMPTIONS.
 5. THE TOP SURFACE OF THE MODULE MUST BE FLAT (NO PRODUCT LABEL RECESS) AND THERMALLY CONDUCTIVE TO FUNCTION OPTIMALLY WITH A HEATSINK.

SEE REVISION TABLE IEC NO: CPG2016-1607 DRAWN BY: DRWNLU20 CHKD: APPR:RCHEN08 DATE: 2015/10/15	QUALITY SYMBOLS	GENERAL TOLERANCES (UNLESS SPECIFIED)	DIMENSION STYLE	SCALE	DESIGN UNITS	THIRD ANGLE PROJECTION
	▽=0	mm INCH	MM ONLY	5:1	METRIC	☉
	▽=0	4 PLACES ±0.13				
	▽=0	3 PLACES ±0.25				
		ANGULAR ± 1°	DRAWN BY: JHATTON	DATE: 2012/09/10	TITLE: SFP SINGLE PORT CAGE ASSEMBLY WITH HEATSINKS	
		DRAFT WHERE APPLICABLE MUST REMAIN WITHIN DIMENSIONS	CHECKED BY: JREEVES	DATE: 2012/10/26	DOCUMENT NO. SD-11112-1000	
			APPROVED BY: K LLOYD	DATE: 2012/10/31	SHEET NO. 1 OF 5	
			MATERIAL NO. SEE SHEET 2		THIS DRAWING CONTAINS INFORMATION THAT IS PROPRIETARY TO MOLEX INCORPORATED AND SHOULD NOT BE USED WITHOUT WRITTEN PERMISSION	

CAGE OPTIONS

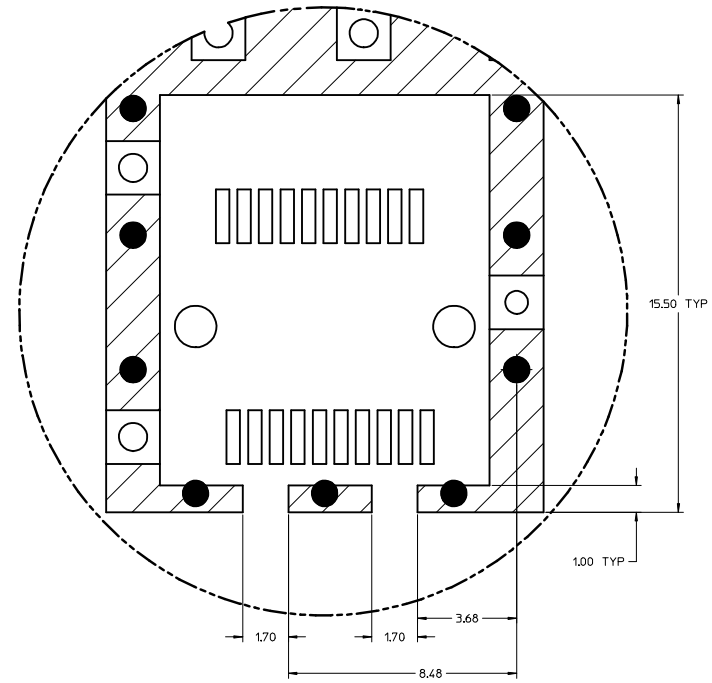
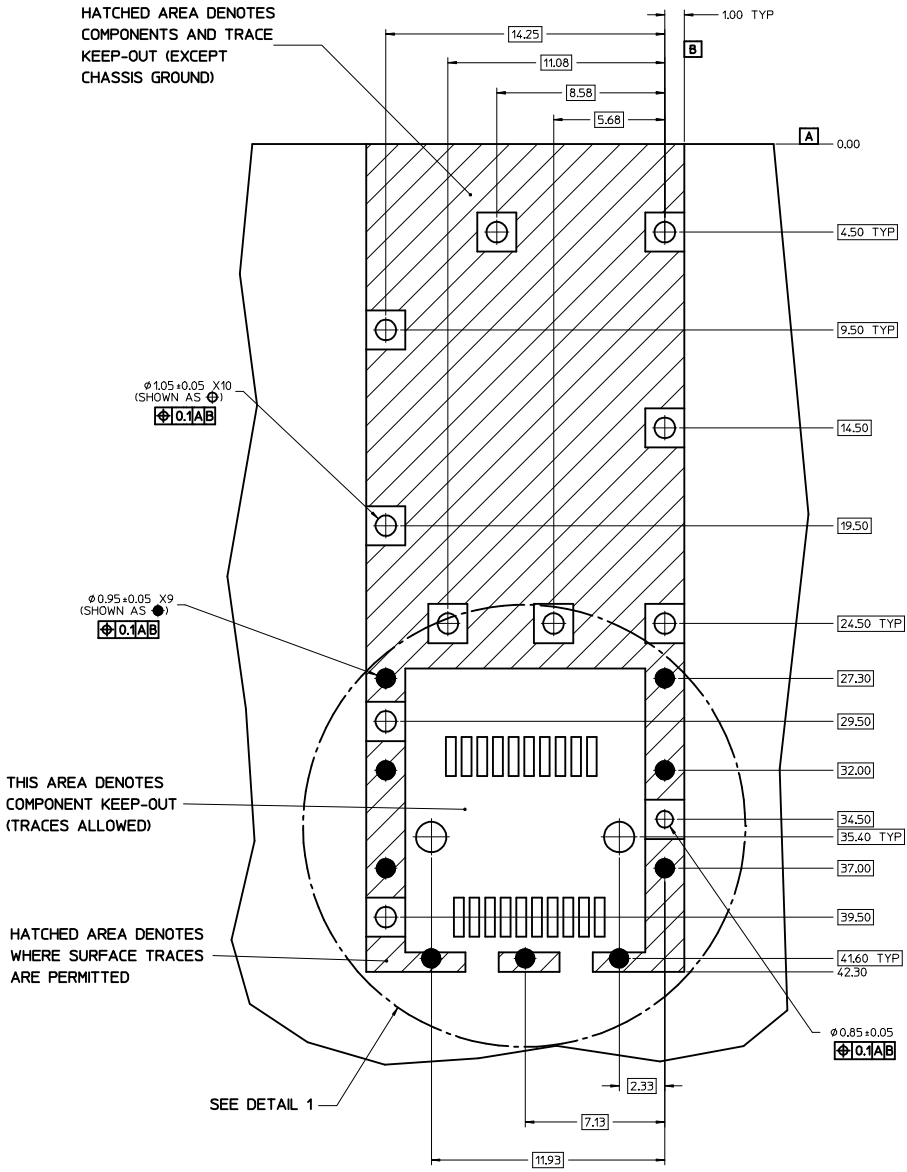


STANDARD CAGE P/N 747610004			
MOLEX P/N	APPLICATION	DIM 'A'	
1111120001	PCI	13.4 MAX	
1111120002	SAN	15.7 MAX	
1111120003	NETWORKING	22.7 MAX	
1111120006	CUSTOM	22.55 MAX	

HEIGHT OF HEATSINK WITH MODULE INSERTED.
 DIMENSION MAY BE LESS DUE TO MODULE AND HEATSINK VARIATIONS.

SEE REVISION TABLE IEC NO: CPG2016-1607 DRWNLU20 CHKD: APPR:RCHEN08 2015/10/15 2015/10/16	QUALITY SYMBOLS	GENERAL TOLERANCES (UNLESS SPECIFIED)	DIMENSION STYLE	SCALE	DESIGN UNITS	THIRD ANGLE PROJECTION	
	=0	mm INCH	MM ONLY	3:1	METRIC		
	=0	4 PLACES ± --- ± ---	DRAWN BY	DATE	TITLE		
	=0	3 PLACES ± --- ± ---	JHATTON	2012/09/10	SFP SINGLE PORT CAGE ASSEMBLY WITH HEATSINKS		
	2 PLACES ± 0.13 ± ---	CHECKED BY	DATE	DOCUMENT NO.			
	1 PLACE ± 0.25 ± ---	JREVES	2012/10/26	SD-111112-1000			
	0 PLACE ± --- ± ---	APPROVED BY	DATE	SHEET NO.			
		KLLOYD	2012/10/31	2 OF 5			
		ANGULAR ± 1 °		MATERIAL NO.			
		DRAFT WHERE APPLICABLE MUST REMAIN WITHIN DIMENSIONS		SEE P/N TABLE			
				THIS DRAWING CONTAINS INFORMATION THAT IS PROPRIETARY TO MOLEX INCORPORATED AND SHOULD NOT BE USED WITHOUT WRITTEN PERMISSION			

PCB LAYOUT - SINGLE SIDE MOUNT

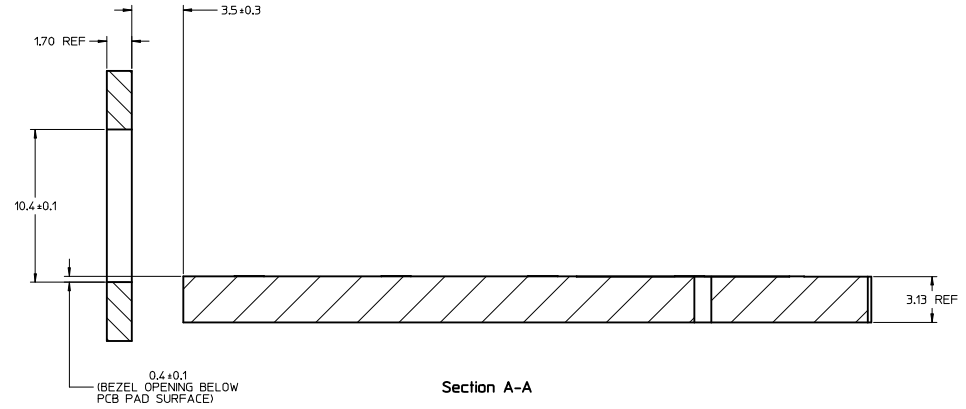
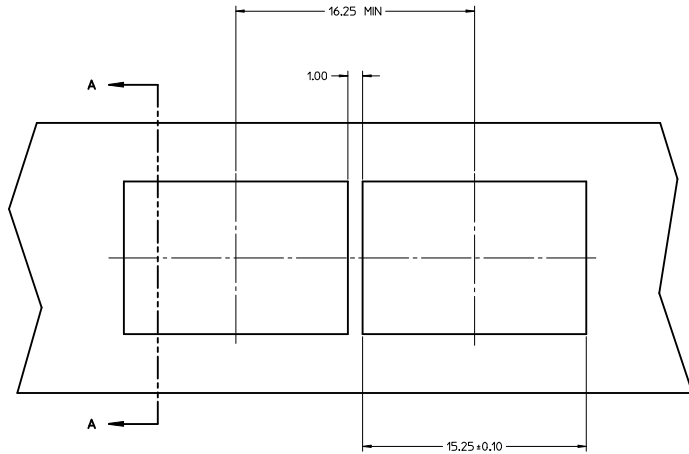
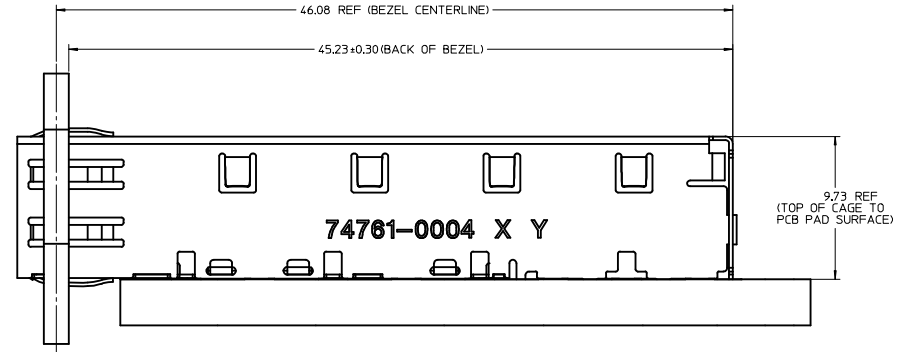


NOTES:

1. PADS AND VIAS CONNECT TO CHASSIS GROUND. (RECOMMENDED PADS TO BE 2.00mm SQUARE).
2. RECOMMENDED THRU HOLE PLATING INCLUDES HASL, OSP, OR IMMERSION (GOLD, SILVER, OR TIN).
3. CONNECTOR PAD LAYOUT PER SFP MSA, WILL ACCOMODATE MOLEX CONNECTOR SERIES 74441 OR EQUIVALENT.

SEE REVISION TABLE IEC NO: CPG2016-1607 DRAWN BY: DRWNLU20 CHYK: APPR:RCHEN08 DATE: 2015/10/15 DESCRIPTION: 2015/10/16	QUALITY SYMBOLS	GENERAL TOLERANCES (UNLESS SPECIFIED)	DIMENSION STYLE	SCALE	DESIGN UNITS	THIRD ANGLE PROJECTION
	$\nabla=0$	mm INCH	MM ONLY	8:1	METRIC	
	$\nabla=0$	4 PLACES ± --- ± ---	DRAWN BY: JHATTON	DATE: 2012/09/10	TITLE: SFP SINGLE PORT CAGE ASSEMBLY WITH HEATSINKS	
	$\nabla=0$	3 PLACES ± --- ± ---	CHECKED BY: JREEVES	DATE: 2012/10/26		
	$\nabla=0$	2 PLACES ± 0.13 ± ---	APPROVED BY: KLLLOYD	DATE: 2012/10/31		
		1 PLACE ± 0.25 ± ---	MATERIAL NO. SEE SHEET 2	DOCUMENT NO. SD-111112-1000	SHEET NO. 3 OF 5	
		0 PLACE ± --- ± ---	THIS DRAWING CONTAINS INFORMATION THAT IS PROPRIETARY TO MOLEX INCORPORATED AND SHOULD NOT BE USED WITHOUT WRITTEN PERMISSION			

BEZEL AND BOARD DIMENSIONS FOR SINGLE SIDE MOUNTING



NOTE:
1. PCB THICKNESS VARIATION MUST BE CONSIDERED WHEN DETERMINING BEZEL OPENING, SIZE, AND LOCATION.

SEE REVISION TABLE IEC NO: CPG2016-1607 DRAWN: LLO20 CHKD: APPR: RCHEN08 2015/10/15 2015/10/16	QUALITY SYMBOLS	GENERAL TOLERANCES (UNLESS SPECIFIED)	DIMENSION STYLE	SCALE	DESIGN UNITS	THIRD ANGLE PROJECTION
	▽=0	mm INCH	MM ONLY	6:1	METRIC	☉
	▽=0	4 PLACES ± --- ± ---	DRAWN BY DATE	TITLE		
	▽=0	3 PLACES ± --- ± ---	JHATTON 2012/09/10	SFP SINGLE PORT CAGE ASSEMBLY WITH HEATSINKS		
▽=0	2 PLACES ± 0.13 ± ---	CHECKED BY DATE	MATERIAL NO.			
	1 PLACE ± 0.25 ± ---	JREEVES 2012/10/26	SEE SHEET 2			
	0 PLACE ± --- ± ---	APPROVED BY DATE	DOCUMENT NO.			
		KLLOYD 2012/10/31	SD-111112-1000			
		ANGULAR ± 1°	SHEET NO.			
		DRAFT WHERE APPLICABLE MUST REMAIN WITHIN DIMENSIONS	4 OF 5			
			THIS DRAWING CONTAINS INFORMATION THAT IS PROPRIETARY TO MOLEX INCORPORATED AND SHOULD NOT BE USED WITHOUT WRITTEN PERMISSION			

DATE (YEAR/MONTH/DAY)	REV	DESCRIPTION
2012/09/11	A	INITIAL RELEASE
2013/01/03	B	SHEET 1: CHANGED CODE PRINTED ON CAGE. REMOVED WKYR CODE AND ADDED TOOL # AND REV. CHANGED CODE NOTE TO INDICATE CURRENT CAGE REVISION AS C. CHANGED HEATSINK MATERIAL TO NICKEL PLATED ALUMINUM. SHEET 2: UPDATED VEIW OF CUSTOM HEATSINK TO REFLECT CHANGES. CHANGED DIM FOR CUSTOM HEATSINK SHORT PINS TO 19.55 MAX AND LONG PINS TO 2.55 MAX. SHEET 3: REMOVED INCH DIMS FROM HOLE CALLOUTS AND INDICATED NUMBER OF EACH TYPE. ADDED TYP TO 1.00 DIM ON PCB. REMOVED ALL DIMS ON LOWER EDGE OF PCB DETAIL AND RE-DIMENSIONS ACCORDING TO STANDARD. SHEET 4: SUPRESSED TRAILING ZEROES ON DIM 3.50 ON SECTION A-A.
2013/03/26	C	ADDED TRIANGLE FRAMED *1* TO DIMENSION *19.55 MAX* ON SHEET 2.
2015/10/15	D	SHEET 1: F12: CHANGED REVISION LETTER FROM C TO E. B19: REMOVED 'LEAD FREE' ON NOTE 4. SHEET 3: I19, G19 AND C12: FOR FOLLOW SFP MSA, MODIFIED TRUE POSITION TOLERANCE FROM 0.05 TO 0.1.

SEE REVISION TABLE IEC NO: CPG2016-1607 DRAWN BY: DRWNLU20 CHYKD: APPR:RCHEN08 2015/10/15 2015/10/16	QUALITY SYMBOLS	GENERAL TOLERANCES (UNLESS SPECIFIED)	DIMENSION STYLE	SCALE	DESIGN UNITS	THIRD ANGLE PROJECTION
	▽=0	4 PLACES ± mm INCH	MM ONLY	1:1	METRIC	
	▽=0	3 PLACES ± 0.13				
	▽=0	2 PLACES ± 0.25				
		0 PLACE ±				
		ANGULAR ± 1°				
		DRAFT WHERE APPLICABLE MUST REMAIN WITHIN DIMENSIONS				
			DRAWN BY: JHATTON	DATE: 2012/09/10	TITLE: SFP SINGLE PORT CAGE ASSEMBLY WITH HEATSINKS	
			CHECKED BY: JREEVES	DATE: 2012/10/26		
			APPROVED BY: KLLLOYD	DATE: 2012/10/31		
			MATERIAL NO:	DOCUMENT NO:	SHEET NO:	
			SEE SHEET 2	SD-111112-1000	5 OF 5	
			THIS DRAWING CONTAINS INFORMATION THAT IS PROPRIETARY TO MOLEX INCORPORATED AND SHOULD NOT BE USED WITHOUT WRITTEN PERMISSION			