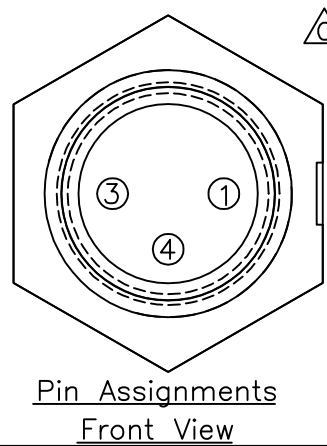
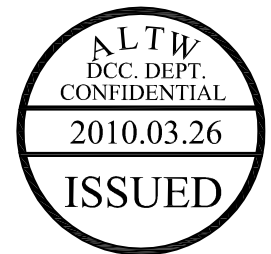
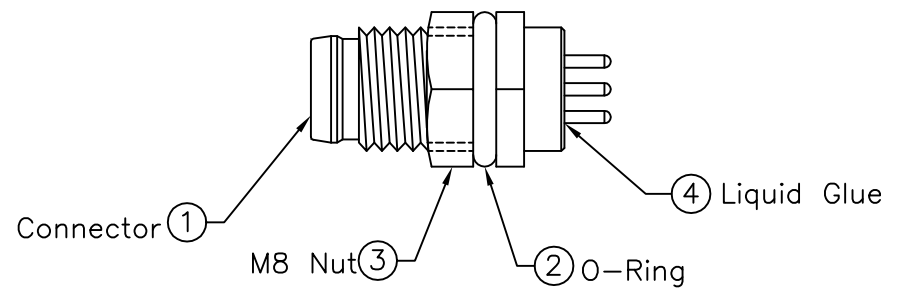
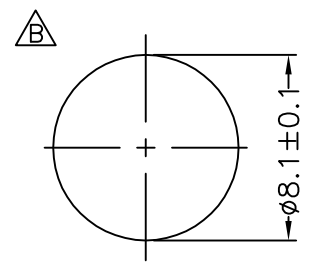
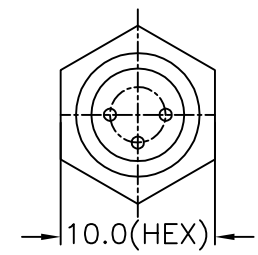
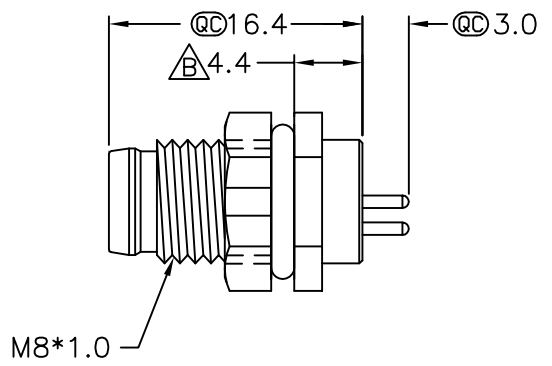
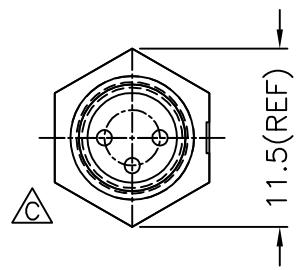
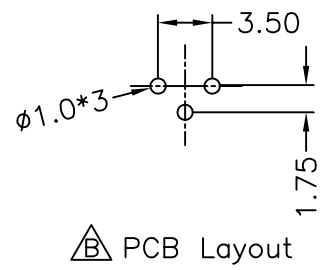


REV.	ECN NO.	DATE	SIGN	DESCRIPTION
B	LEN-910192	2009/01/07	Ivan Lin	Change rev. to ECN note
C	LEN-030191	2010/03/24	Li Xiu Zhi	Change View

THIS DOCUMENT IS SUBJECT TO CHANGE WITHOUT NOTICE. IT IS CONFIDENTIAL AND A PROPERTY OF Amphenol LTW. DISCLOSURE TO THIRD PARTY HAS TO BE AUTHORIZED BY Amphenol LTW.



- Note:
- * ④ Important Dimension To Check.
 - * Waterproof Rate: IP67
 - * Housing: Nylon+GF, Black
 - * Male Pin: Copper Alloy, Gold Plated
 - * M8 Nut: Nylon+GF, Black
 - * O-Ring: EPDM, Black
 - * For Panel Thickness Max 3.0mm

UNIT:mm		TITLE	Amphenol LTW 安費諾亮泰企業股份有限公司		ITEM NO	DRAWN BY	DATE
		Panel Screw 3P M Conn M Pin SCALE Free SHEET 1 OF 1 REV. C SIZE A4 ④ :Inspection Item			8P-03PMMP-SF7001	Li Xiu Zhi	2010/03/24
TOLERANCE				DWG NO	CHECKED BY		DATE
.X ±0.25				8P-03PMMP-SF7001	Tina		2010/03/24
.XX ±0.1				CUSTOMER	APPROVED BY		DATE
.XXX ±0.05				ALTW	Can		2010/03/24
ANGLES ±1°							