

Light is OSRAM

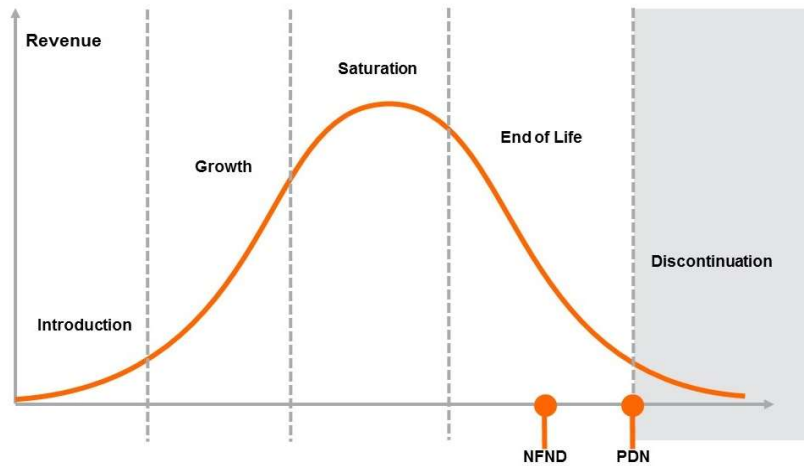
Product Or Individual Q-Code Discontinuation (acc. JEDEC J-STD-048)  
OS-PDN-2021-073

15 June 2021

---

**Last order:** 15 July 2021  
**Last delivery:** 15 August 2021

---



Please direct your feedback to your local Sales office.

DISCONTINUED				NEW (REPLACEMENT)		
Device	Ordering Code	Brand	Reason for discontinuation	Device	Datasheet Ordering Code	Brand
GW JTLRS1.EM-K4LW-XX56-1-100-1-R33	Q65112A4540	DURIS E2835	APT PDN the device BOM	No replacement		
GW JTLRS1.EM-K4L3-XX58-1-100-Q-R33	Q65113A0663	DURIS E2835	APT PDN the device BOM	No replacement		
GW JTLRS1.EM-KZLY-XX510-1-100-Q-R33	Q65113A0664	DURIS E2835	APT PDN the device BOM	No replacement		
GW JTLRS1.EM-LVL5-XX51-1-100-Q-R33	Q65113A0669	DURIS E2835	APT PDN the device BOM	No replacement		
GW JTLRS1.EM-LVL5-XX52-1-100-Q-R33	Q65113A0670	DURIS E2835	APT PDN the device BOM	No replacement		
GW JTLRS1.EM-LVL5-XX53-1-100-Q-R33	Q65113A0671	DURIS E2835	APT PDN the device BOM	No replacement		
GW JTLRS1.EM-LVL5-XX55-1-100-Q-R33	Q65113A0672	DURIS E2835	APT PDN the device BOM	No replacement		
GW JTLRS1.EM-K5L4-XX56-1-100-R33	Q65113A0673	DURIS E2835	APT PDN the device BOM	No replacement		
GW JTLRS1.EM-K5L4-XX56-1-100-Q-R33	Q65113A0675	DURIS E2835	APT PDN the device BOM	No replacement		
GW JTLRS1.EM-K5L4-XX57-1-100-Q-R33	Q65113A0676	DURIS E2835	APT PDN the device BOM	No replacement		