

Jumper Wire Kits

Multi-color Jumper Wire Kits



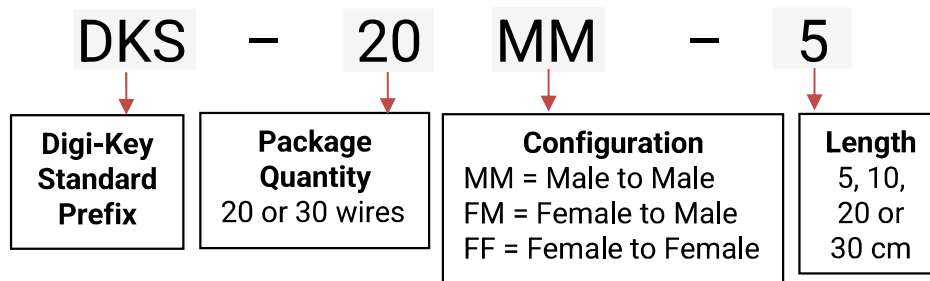
Product Highlights

- Easy insertion and extraction into solderless breadboards.
- Robust design supports repeat usage and quick design changes.

Specifications

Length Options:	1.97", 3.94", 7.87" or 11.81" (5cm, 10cm, 20cm, 30cm)
Colors:	Assortment of 10 colors: Red, Orange, Yellow, Green, Blue, Purple, Brown, Black, White, and Gray
Wire:	24awg Stranded
Wire Jacket:	Polyvinyl Chloride (PVC)
Packaging:	Bag of total of 20 or 30 wires

Part Number Breakdown:



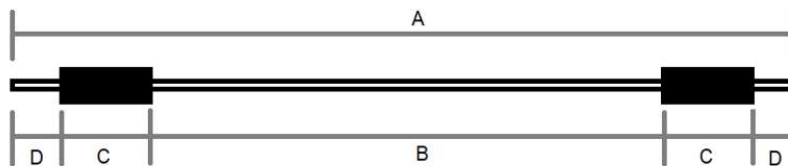
Available Part Numbers

Part Number	Configuration	Length	Total Wires per Pack	Color
DKS-20MM-5	Male to Male	5 cm	20	2 of each color
DKS-20MM-10	Male to Male	10 cm	20	2 of each color
DKS-20MM-20	Male to Male	20 cm	20	2 of each color
DKS-20MM-30	Male to Male	30 cm	20	2 of each color
DKS-20MF-5	Male to Female	5 cm	20	2 of each color
DKS-20MF-10	Male to Female	10 cm	20	2 of each color
DKS-20MF-20	Male to Female	20 cm	20	2 of each color

DKS-20MF-30	Male to Female	30 cm	20	2 of each color
DKS-20FF-5	Female to Female	5 cm	20	2 of each color
DKS-20FF-10	Female to Female	10 cm	20	2 of each color
DKS-20FF-20	Female to Female	20 cm	20	2 of each color
DKS-20FF-30	Female to Female	30 cm	20	2 of each color
DKS-30MM-5	Male to Male	5 cm	30	3 of each color
DKS-30MM-10	Male to Male	10 cm	30	3 of each color
DKS-30MM-20	Male to Male	20 cm	30	3 of each color
DKS-30MM-30	Male to Male	30 cm	30	3 of each color
DKS-30MF-5	Male to Female	5 cm	30	3 of each color
DKS-30MF-10	Male to Female	10 cm	30	3 of each color
DKS-30MF-20	Male to Female	20 cm	30	3 of each color
DKS-30MF-30	Male to Female	30 cm	30	3 of each color
DKS-30FF-5	Female to Female	5 cm	30	3 of each color
DKS-30FF-10	Female to Female	10 cm	30	3 of each color
DKS-30FF-20	Female to Female	20 cm	30	3 of each color
DKS-30FF-30	Female to Female	30 cm	30	3 of each color

Dimensions

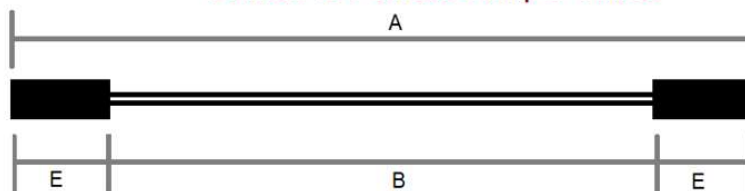
Male to Male Jumper Wires



Male to Female Jumper Wires



Female to Female Jumper Wires



DIGI-KEY STANDARD

Contact Shape	Shape	Pin Diameter	Dimension C: Heatshrink	Dimension D: Pin Length	Dimension E: Housing Size
Male	Round	0.69mm	15mm	7.25mm	-
Female	Square	-	-	-	2.6mm x 2.6mm

Configuration	Wire Length Pre-Assembly	Dimension A: Total Length*	Dimension B: Length of Visible Colored Wire*
Male to Male	5cm (1.97")	8.5cm	4.0cm
Male to Female		8.1cm	4.5cm
Female to Female		7.8cm	4.8cm
Male to Male	10cm (3.94")	13.6cm	9.0cm
Male to Female		13.2cm	9.5cm
Female to Female		12.8cm	10.0cm
Male to Male	20cm (7.87")	23.6cm	19.1cm
Male to Female		23.2cm	19.6cm
Female to Female		22.3cm	19.9cm
Male to Male	30cm (11.81")	33.3cm	29.1cm
Male to Female		33.0cm	29.5cm
Female to Female		32.5cm	29.8cm

*Tolerance is approximately +/- 3mm