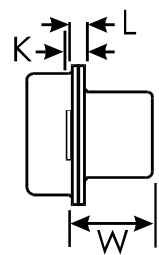
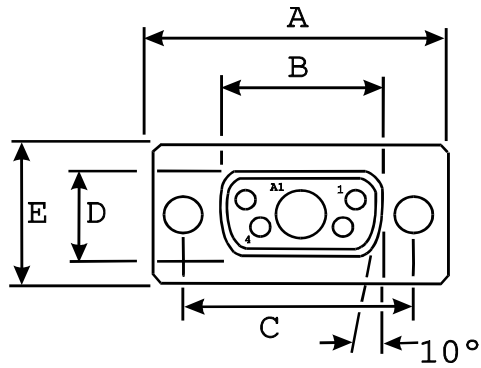
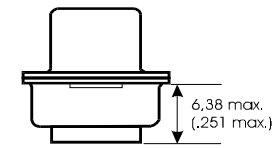


This is issued in strict confidence on condition that it is not used as a basis for manufacture or sale, and that it is not copied, reprinted or disclosed to a third party either wholly or in part without prior written consent of ITT Cannon.

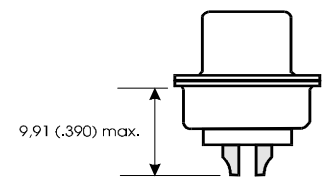


No mounting hardware selected  
 with 3,05 (.120) mounting hole  
 Signal contacts  
 not shown for clarity



A ± 0,38 (.015)	B ± 0,13 (.005)	C ± 0,13 (.005)	D ± 0,13 (.005)	E ± 0,38 (.015)	L ± 0,25 (.010)	W ± 0,41 (.016)	K ± 0,32 (.013)
30,81 (1.213)	16,33 (.643)	24,99 (.984)	7,90 (.311)	12,55 (.494)	0,76 (.030)	6,94 (.273)	1,21 (.048)

Solder cup signal contacts



DESCRIPTION	MATERIAL	FINISH
Insulator	Polyester	None, (Color Black)
Shells	Steel	Tin
Signal Contacts	Copper alloy	30 μ in Gold over Ni in mating area, Tin on balance

Unless otherwise specified, dimensions are in mm & (in.) Tolerances are (.XXX = mm) Decimals      Angles X    ± 0,20 (.008) X° ± 1.0° XX   ± 0,10 (.004) XXX ± 0,05 (.002)	Issue Date: 1-Jul-19	Cannon	ITT Industries
	CONNECTOR, RECEPTACLE, ELECTRICAL COMBO D 5W1 SOLDER CUP		
	PART NO.		<b>DEM5W1SK126</b>