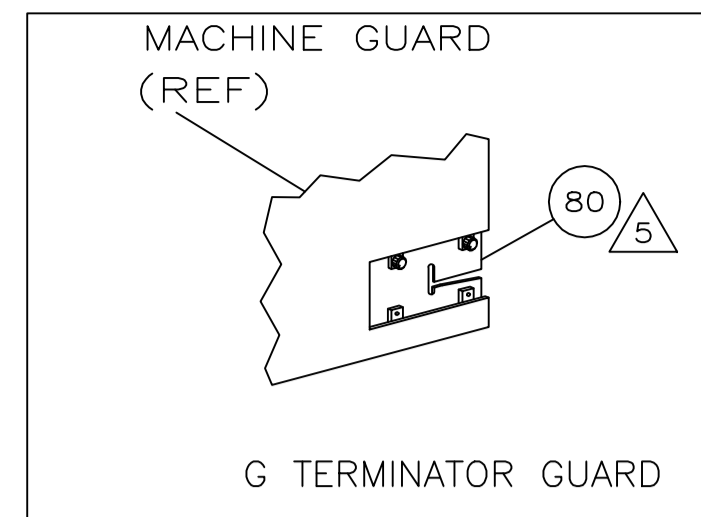
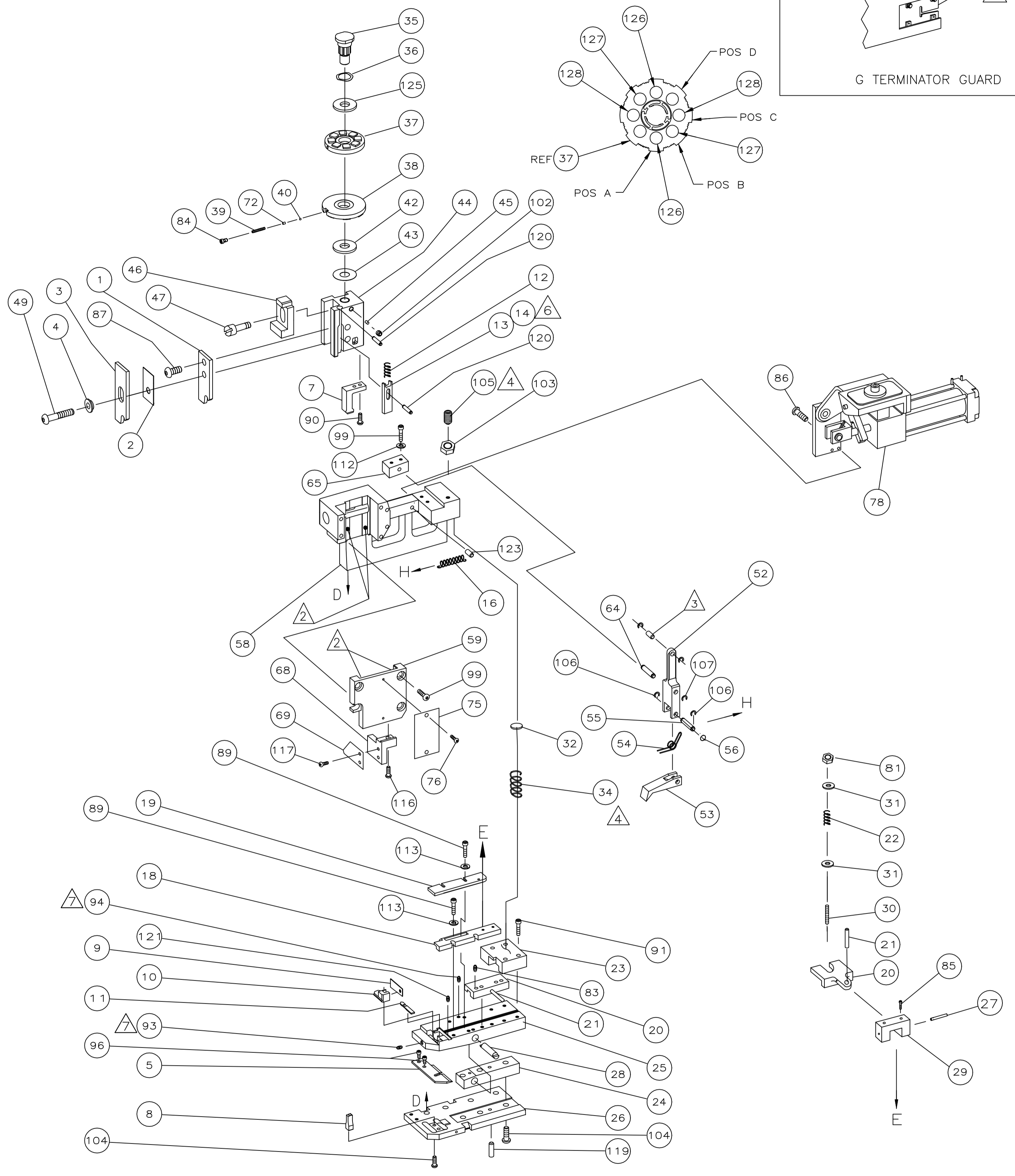


8		7		6		5		4		3		2		1	
THIS DRAWING IS UNPUBLISHED. RELEASED FOR PUBLICATION															
COPYRIGHT - TE Connectivity Ltd. ALL RIGHTS RESERVED.															
PART NUMBER	REV	FIRST USED													
687394-8	G	354500-1													



TERMINAL NAME: RECEPTACLE, FASTON™.187 SERIES FLAG					
CRIMPING DATA					
	42800				
	60529	PAD LTR	CRIMP HEIGHT	WIRE SIZE	
	61029	A	.040 ±.002 [1.02 ±0.05mm]	16	
	62213	B	.037 ±.002 [0.94 ±0.05mm]	18	
	63540	C	.035 ±.002 [0.89 ±0.05mm]	20	
		D	NOT	USED	
		CRIMP	SIZE	TYPE	RANGE
		WIRE	.140 [3.56mm]	TAB-LOCK	20 - 16
		INSUL	.140 [3.56mm]	0	.110 - .170
WIRE STRIP LENGTH	TERM APPL SPEC	FEED	APPL INSTRUCTION	SET UP GAGE	LAYOUT
.173-.203	114-2078	.510	408-8037	-	L1815

REVISIONS					
P	LTR	DESCRIPTION	DATE	DNW	APVD
G1	ECR-19-001466		30JAN2019	GK	GB

-8	BENCH MODEL G	AIR FEED			
1	-	B	318530-3	STOP, WIRE	70
1	-	B	318529-1	BLOCK, MOUNTING	69
					67
					66
1	-	B	456987-1	BLOCK, PIVOT	65
1	-	A	457058-1	PIN, PIVOT	64
					63
					62
					61
					60
1	-	C	318528-1	CAP, RAM	59
1	-	D	457079-1	HOUSING	58
					57
1	-	B	25745-1	RING, SPLIT	56
1	-	B	240624-1	PIN, FEED FINGER	55
1	-	B	691499-1	SPRING, FEED FINGER	54
1	-	B	454568-1	FINGER, FEED	53
1	-	B	457057-1	ARM, PIVOT	52
					51
					50
1	-	A	3-21002-5	BOLT, CRIMPER	49
					48
1	-	A	22353-8	SCREW, SHOULDER	47
1	-	A	690578-1	BLOCK, INSULATION ADJUST	46
1	-	A	690191-1	PLUG, NYLON	45
1	-	C	454574-1	RAM	44
1	-	A	690125-1	WASHER, LAMINATED	43
1	-	A	1-690124-1	WASHER, RAM	42
					41
1	-	A	23241-6	BALL, STEEL	40
1	-	A	690170-1	SPRING, COMPRESSION	39
1	-	C	690142-1	DISC, INSULATION	38
1	-	D	354777-1	WIRE DISC, PLASTIC	37
1	-	B	22480-5	WASHER, SPRING	36
1	-	B	690212-1	POST, RAM	35
1	-	A	3-23846-5	SPRING, HINGE BAR	34
					33
1	-	A	690573-1	SPACER, SPRING	32
2	-	A	1-21899-3	WASHER, FLAT	31
1	-	A	1-22354-8	STUD, DRAG	30
1	1	A	454569-1	DRAG MOUNT	29
1	-	B	1633530-1	PIN, HINGE	28
1	-	A	21030-2	DRAG SPRING MOUNT	27
1	-	C	684905-1	PLATE, BASE	26
1	-	B	454579-2	HINGE BAR	25
1	-	B	690571-1	BLOCK, STABILIZER	24
1	-	C	690585-1	BLOCK, PRESSURE	23
1	-	A	8-22282-6	SPRING, DRAG	22
1	-	A	21030-6	LEVER, DRAG	21
1	-	A	454570-1	DRAG, STOCK	20
1	-	C	454573-1	GUIDE, STRIP (REAR)	19
1	-	C	318739-6	GUIDE, STRIP (FRONT)	18
					17
1	-	A	2-22287-6	SPRING, EXTENSION	16
					15
1	-	B	1-692134-1	POSITIONER, TERMINAL	14
1	-	B	692134-7	POSITIONER, TERMINAL	13
1	-	A	5-22280-5	SPRING, TERM. POSITIONER	12
1	-	B	454712-3	PLATE, REAR SHEAR	11
1	-	B	454578-1	ANVIL INSERT	10
1	-	C	690569-2	PLATE, FRONT SHEAR	9
1	-	A	690718-1	ANVIL	8
1	-	B	454575-1	BLADE, SLUG	7
					6
1	-	B	684906-1	PLATE, ANVIL RETAINING	5
1	-	B	690574-1	SPACER, TUBULAR INSUL CRIMPER	4
1	-	C	690715-1	CRIMPER, INSULATION	3
					2
1	-	C	690716-3	CRIMPER, WIRE	1

					129
2	-	C	4-354779-8	PIN, WIRE DISC (.3230)C	128
2	-	C	4-354779-7	PIN, WIRE DISC (.3225)B	127
2	-	C	4-354779-2	PIN, WIRE DISC (.3200)A	126
1	-	A	986950-1	WASHER, FLAT PRECISION	125
					124
1	-	A	4-22183-2	PIN, GROOVE (Ø187X2.00)	123
					122
1	-	A	3-21028-2	PIN, SLOTTED SPRING (Ø094X.25)	121
2	-	A	4-21028-9	PIN, SLOTTED SPRING (Ø125X.38)	120
1	-	A	21029-5	PIN, SLOTTED SPRING (Ø188X.75)	119
					118
2	-	A	1-21002-6	SCREW, SBHC (6-32 x .25) STOP	117
1	-	A	2-22603-1	SCREW, HEX HD(8-32X.38) MTG	116
					115
					114
4	-	A	21024-4	WASHER, LOCK (#8)	113
2	-	A	21024-5	WASHER, LOCK (#10)	112
					111
					110
					109
					108
1	-	A	1-21986-2	RING, RET "E" Ø3/16	107
2	-	A	21045-3	RING, RET "C" Ø3/16	106
1	-	A	8-21007-5	SCREW, SKT SET(5/16-24X.75)	105
7	-	A	2-22733-8	SCREW, BHC (1/4-20X.63)	104
1	-	A	1-22202-7	NUT, HEX (5/16-24)	103
1	-	A	21009-2	SCREW, SKT SET(1/4-20X.25)	102
					101
					100
6	-	A	3-21000-8	SCREW, SHC (10-32X.88)	99
					98
					97
2	-	A	7-21000-6	SCREW, SHC (10-32X.38)	96
					95
1	-	A	4-21006-5	SCREW, SKT SET (8-32X.62)	94
1	-	A	21061-9	SCREW, SKT SET (8-32X.25)	93
					92
4	-	A	2-21000-9	SCREW, SHC (8-32X.75)	91
2	-	A	1-23030-1	SCREW, SHC (NYLOK)(8-32X.62)	90
4	-	A	2-22603-3	SCREW, HEX HC (8-32X.62)	89
					88
1	-	A	2-21002-1	SCREW, BHC (8-32X.38)	87
2	-	A	21001-3	SCREW, SHC (1/4-20X.62)	86
2	-	A	2-21000-8	SCREW, SHC (8-32X.62)	85
1	-	A	23030-1	SCREW, SHC(NYLOK)(6-32X.25)	84
					83
					82
1	-	A	21022-3	NUT, HEX SELF LOCK (10-32)	81
REF	-	A	679532-1	PLATE, APPL MNT	80
					79
1	-	D	462622-2	AIR FEED ASSEMBLY	78
					77
2	-	A	21017-2	SCR, DRIVE(#2X.19)ID	76
1	-	B	461264-1	PLATE, IDENTIFICATION	75
					74
					73
1	-	A	690603-1	SPRING, ASSIST	72
					71
					70
					69
					68
					67
					66
					65
					64
					63
					62
					61
					60
					59
					58
					57
					56
					55
					54
					53
					52
					51
					50
					49
					48
					47
					46
					45
					44
					43
					42
					41
					40
					39
					38
					37
					36
					35
					34
					33
					32
					31
					30
					29
					28
					27
					26
					25
					24
					23
					22
					21
					20
					19
					18
					17
					16
					15
					14
					13
					12
					11
					10
					9
					8
					7
					6
					5
					4
					3
					2
					1

- 1 RECOMMENDED SPARE PARTS.
- 2 GREASE LIGHTLY.
- 3 LUBRICATE DAILY USING NO. 20 MACHINE OIL.
- 4 AFTER ASSEMBLY OF APPLICATOR, PROPER SPRING PRESSURE (ITEM 34) CAN BE OBTAINED BY TIGHTENING SET SCREW (ITEM 105) UNTIL CONTACT IS MADE WITH SPACER (ITEM 32) THEN TIGHTEN AN ADDITIONAL 5 1/2 - 6 REVOLUTIONS.
- 5 GUARD MUST BE IN PLACE WHEN OPERATING APPLICATOR IN A BENCH MACHINE.
- 6 TO DETERMINE PROPER TERMINAL POSITIONER REFER TO AMP FORM 6140-4
- 7 USE SEALANT PN 1-23419-5 AS SHOWN

QTY	REQD	PER	ASSY	U/M	DWG	SIZE	PART	NO	DESCRIPTION	ITEM	NO
REVISION OF EACH ASSY NO (WHEN BLANK, USE DWG REVISION)											
PARTS LIST											

THIS DRAWING IS A CONTROLLED DOCUMENT.

APPROVED: J.C. Baker 11/6/96
 CHK: G. ERISMAN 11/6/96
 APVD: J. DODDS 11/6/96
 NAME: J. DODDS

TE Connectivity
 END FEED HINGE BAR APPLICATOR

WEIGHT: 6.01 KG
 A1 00779 C=687394-8

CUSTOMER DRAWING
 SCALE: 1 OF 1
 REV: G1