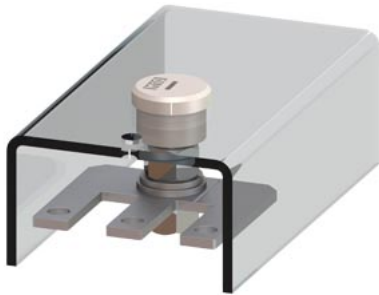


Link for paralleling With connecting terminal, 3-pole for 3RT2.4



General technical data		
product brand name		SIRIUS
product designation		Infeed terminal
design of the product		Parallel switching connection for contactors S3



Certificates/ approvals		
General Product Approval	EMC	Declaration of Conformity



[Confirmation](#)



EG-Konf.

Test Certificates	Marine / Shipping
<a href="#">Type Test Certificates/Test Report</a> <a href="#">Special Test Certificate</a>	   

other	Railway
<a href="#">Confirmation</a> <a href="#">Miscellaneous</a>	<a href="#">Vibration and Shock</a> <a href="#">Special Test Certificate</a>

Further information
Information- and Downloadcenter (Catalogs, Brochures,...) <a href="https://www.siemens.com/ic10">https://www.siemens.com/ic10</a>
Industry Mall (Online ordering system) <a href="https://mall.industry.siemens.com/mall/en/en/Catalog/product?mlfb=3RT1946-4BB31">https://mall.industry.siemens.com/mall/en/en/Catalog/product?mlfb=3RT1946-4BB31</a>
Cax online generator <a href="http://support.automation.siemens.com/WW/CAXorder/default.aspx?lang=en&amp;mlfb=3RT1946-4BB31">http://support.automation.siemens.com/WW/CAXorder/default.aspx?lang=en&amp;mlfb=3RT1946-4BB31</a>
Service&Support (Manuals, Certificates, Characteristics, FAQs,...) <a href="https://support.industry.siemens.com/cs/ww/en/ps/3RT1946-4BB31">https://support.industry.siemens.com/cs/ww/en/ps/3RT1946-4BB31</a>
Image database (product images, 2D dimension drawings, 3D models, device circuit diagrams, EPLAN macros, ...) <a href="http://www.automation.siemens.com/bilddb/cax_de.aspx?mlfb=3RT1946-4BB31&amp;lang=en">http://www.automation.siemens.com/bilddb/cax_de.aspx?mlfb=3RT1946-4BB31&amp;lang=en</a>

last modified:

1/18/2021 