



# 150m, Ultra-far Night Vision All-seeing Eye Night Vision Track

InfiRay® T2 Thermal Camera for Smartphone



Smartphone holder is not included



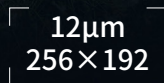
Long-distance human recognition



Hot spot tracking



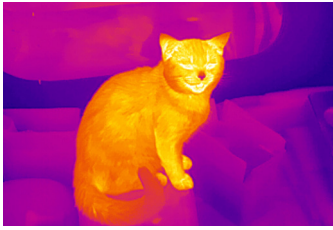
Adjustable reticle



High definition thermal imaging core



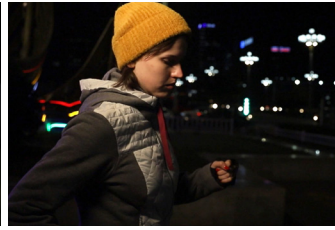
Exclusive patented image algorithm



Animal observation



Outdoor sports



Night run



Short video making

## Specifications

Model	T2 Search
Resolution	256 × 192
Pixel pitch	12μm
Spectral Band	8~14μm
Focal length	9.0mm
FOV	19.6° × 14.7°
Focusing mode	Manual
Frame rate	25Hz
NETD	≤50mk
MRTD	≤500mK
Operating temperature	-10°C~+ 50°C
Power consumption	< 350mW
Weight (with lens)	<20g
Dimension (with lens)	26mm × 26mm × 26.6mm
Supported system	Android 6.0 and above*
Image enhancement	Digital detail enhancement (DDE)
Reticle	Support, with hot/cold spot tracking
Color palette	White hot, black hot, red hot, and other pseudo colors
Secondary development	Provide SDK for secondary development
Magnification	Support 1×~4× continuous digital zoom
Video saving	Support photo and video saving
APP updating	Support APP online updating

\*Support mainstream smartphone systems, but some systems have not been tested yet.



InfiRay Technologies Co., Ltd.

Tel: 400-998-3088

Web: [www.infirayoutdoor.com](http://www.infirayoutdoor.com)