

20 19 18 17 16 15 14 13 12 11 9 8 7 6 5 4 3 2 1

VIEW ON MATING SIDE



A = 64 STANDARD CONTACTS L = 2.9

MARKING	STANDARD
PERFORMANCE LEVEL	G2/0 = CONTACT AREA PERFORM. LEVEL 2 / TERMINATION TIN
FLUX PROOF	NO
FIXING CLIP	NO
DIMENSIONS	SD-85013-0001 SHT 1

A	G2/0	a1-32	a1-32
CONTACT SYMBOL	PERFORMANCE LEVEL	CONTACT POSITION NUMBER	

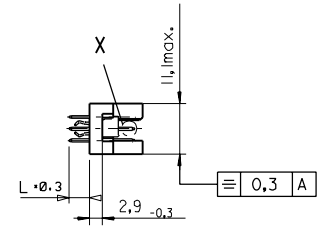
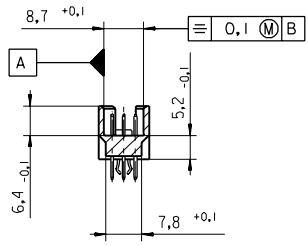
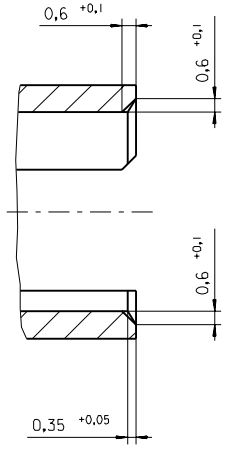
EC NO. I 2004-XXXX DRAWN N.S. 31/03/04 CHK'd G.L. 31/03/04 APPR. G.L. 31/03/04	QUALITY SYMBOLS MAJOR $\nabla$ CRITICAL $\nabla$	GENERAL TOLERANCES: (UNLESS SPECIFIED): 4 PLACES $\pm 0.1$ mm $\pm .005$ INCH 3 PLACES $\pm 0.2$ mm $\pm .008$ INCH 2 PLACES $\pm 0.3$ mm $\pm .012$ INCH 1 PLACE $\pm 0.5$ mm $\pm .020$ INCH	SCALE DESIGN UNITS <input checked="" type="checkbox"/> MM <input type="checkbox"/> INCH	THIRD ANGLE PROJECTION DIMENSIONS: <input type="checkbox"/> MM <input type="checkbox"/> INCH <input checked="" type="checkbox"/> MM ONLY	SHT 1 REV REVISE ON CAD ONLY	
	DRAWN BY & DATE N.S. 20/04/01	CHECKED BY & DATE G.L. 20/04/01	APPROVED BY & DATE G.L. 20/04/01	TITLE: 96 POS MALE CONNECTOR ACCORDING DIN 41612 STYLE R CONTACTS ARRANGEMENT		
	CAD FILENAME S850131938.S01	MATERIAL NO. 85013-1938	DRAWING NO. SD-85013-1938	MOLEX INCORPORATED SHEET NO. 1 OF 1 SIZE D		

DRAFT WHERE APPLICABLE MUST REMAIN WITHIN DIMENSIONS  
 THIS DRAWING CONTAINS INFORMATION THAT IS PROPRIETARY TO MOLEX INCORPORATED AND SHOULD NOT BE USED WITHOUT WRITTEN PERMISSION.

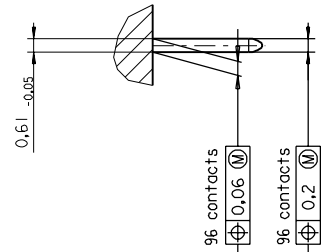
24-border.DGN REV 4 96/06/12 LEVEL 6 19 18 17 16 15 14 13 12 11 10 9 8 7 6 5 4 3 2 1

PART NO.  
DWG. NO.

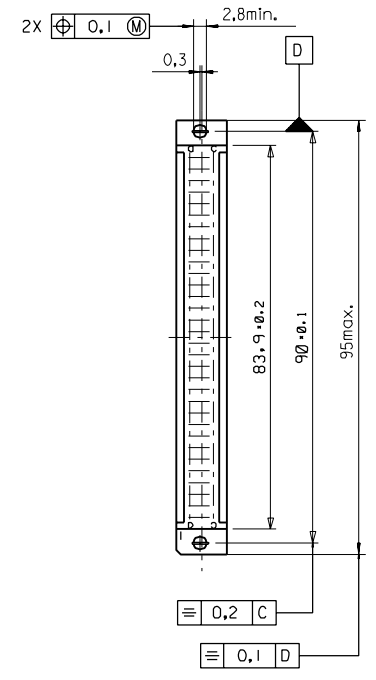
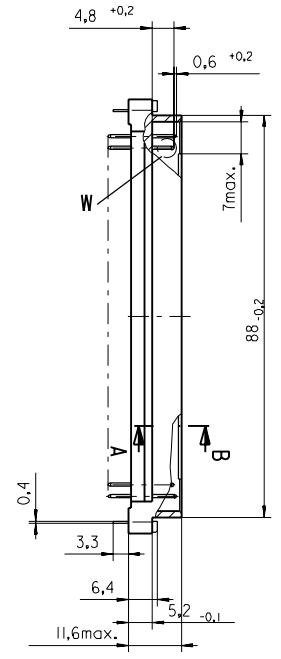
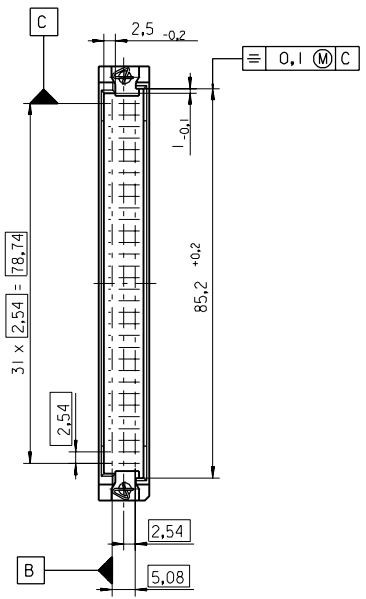
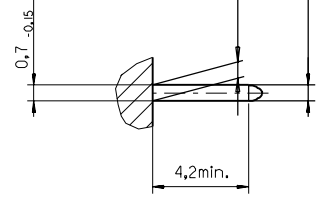
Section A - B  
5:1



View X  
5:1



View W  
5:1



FIRST ANGLE PROJECTION		REVISE ONLY ON CAD SYSTEM		SH.	REV.
UNLESS OTHERWISE SPECIFIED TOLERANCES: ANGULAR ±2°		DRWG BY	SIGN	CAD/CAM PROJECT NAME	
INCH METRIC		Ca		85013000 611	
3 PLACE ± . ±		CHK'D BY	SIGN	TITLE	
2 PLACE ± . ±		KN		96 pos. Male connector acc. DIN 41612 Style R Dimensions	
1 PLACE ± . ±		APP'D BY	SIGN	SHEET NO. DATE	
DRAFT WHERE APPLICABLE MUST REMAIN WITHIN DIMENSIONS				1 OF 95/06/07	
DESIGN DIMENSION <input checked="" type="checkbox"/> MM		SCALE		MOLEX EUROPE	
EQUIVALENT DIMENSION <input type="checkbox"/> MM		: 1		PART NO. DWG NO.	
IF TWO DIMENSIONS ARE SHOWN THE UPPER IS THE DESIGN DIMENSION, LOWER IS SECONDARY				SDA-85013-0001	
first release see ECN No. 1887				SIZE	
A				B	

