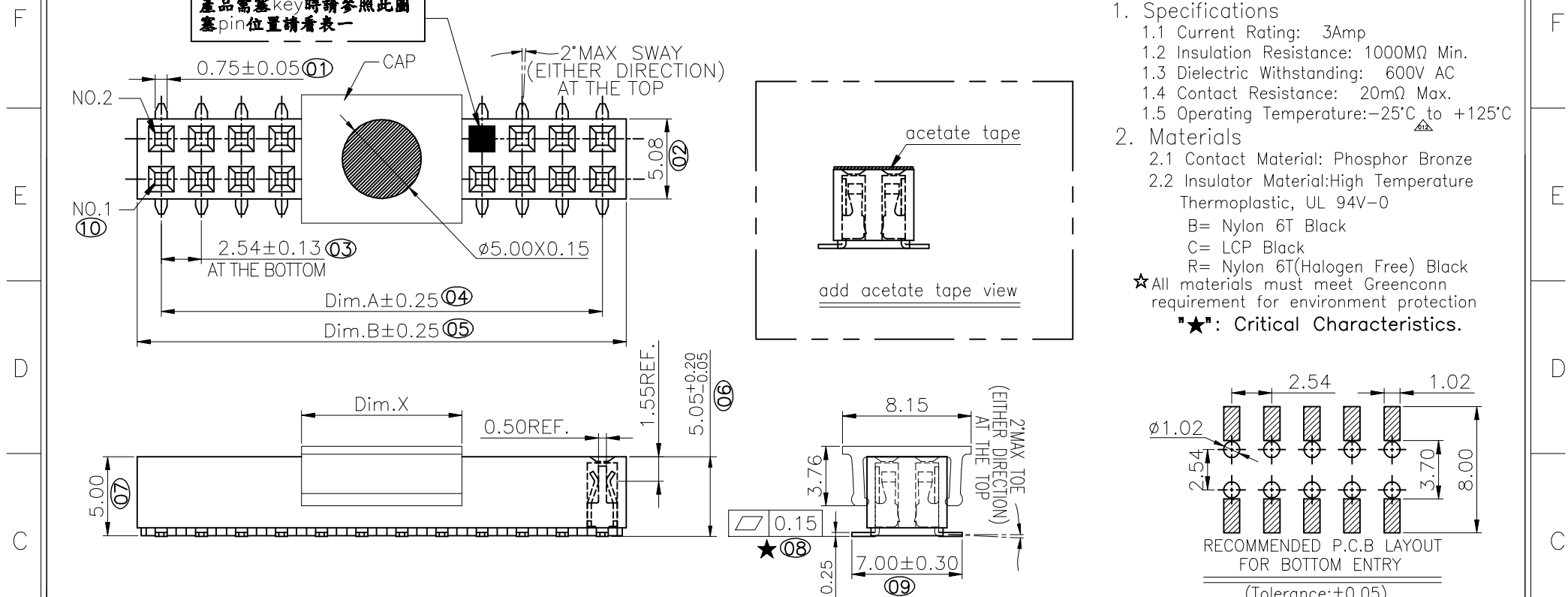


REV.	LOCAS.	DESCRIPTION	DATE	DRAWN
012	△△	依業務要求增加車載料號	2020.10.04	何東華
013	△△	依業務要求增加車載料號	2020.10.14	何東華



- Specifications
 - Current Rating: 3Amp
 - Insulation Resistance: 1000MΩ Min.
 - Dielectric Withstanding: 600V AC
 - Contact Resistance: 20mΩ Max.
 - Operating Temperature: -25°C to +125°C
 - Materials
 - Contact Material: Phosphor Bronze
 - Insulator Material: High Temperature Thermoplastic, UL 94V-0
 - B= Nylon 6T Black
 - C= LCP Black
 - R= Nylon 6T(Halogen Free) Black
- ★ All materials must meet Greenconn requirement for environment protection
 "★": Critical Characteristics.

只適用於A004系列產品上

CAP	4.00mm	02~03pins
	10.15mm	04~40pins
Name	Dim.X	NOTE
CAP	4.00mm	02~08pins
	10.15mm	09~40pins

Ordering Information

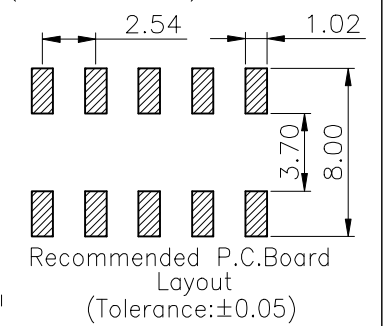
C SHC206 - XX XX A XXX X 1 A X

No. of Pins per Row 02~40 △△

Standard Plating 02=Gold Flash
 Selective Plating 01=Tin 05=Gold Flash/Tin

serial NO. Material Look Form Color 1=Black

Standard Packing C=Tube
 Selective Packing A=Box E=Cap+Tube F=Cap+Tape&Reel G=Acetate Tape+Tube H=Acetate Tape+Tape&Reel



格稜股份有限公司 Greenconn Corporation					GENERAL TOLERANCE		DESIGNED: 何東華	DATE: 2020.10.14	DWG. NO. △△	TITLE: 2.54 FEMALE HEADER DUAL ROWS SMT TYPE CONNECTOR
					X'±5.0'	X±0.30	CHECKED:	DATE:	CSHC206-CAXXXXA	
REV. 013	UNIT. mm	SCALE. 3:1	PAGE. 1/2	△△	.X'±3.0'	.X±0.25	CO SINGED: 廖世龍	DATE: 2020.10.14	PART NO. △△	CSHC206-XXXX AXXXX1AX
					.XX'±2.0'	.XX±0.15	APPROVED:	DATE:		
					.XXX'±1.0'	.XXX±0.10				

Greenconn P/N		Customer	Remarks
CSHC206-0702A001R1AE		C014	Automotive Connector
CSHC206-1202A001R1AE			
CSHC206-0802A001R1AE			
CSHC206-1302A001R1AE			

REV.	LOCAS.	DESCRIPTION	DATE	DRAWN
007		更正產品可做Pin數.	2012.04.19	李芳忠
008		依業務要求新增規格	2013.01.05	李芳忠
009		依上級要求變更膠紙配方	2013.01.29	李芳忠
010		依業務要求新增規格	2013.06.21	李芳忠
011		依業務要求新增規格	2013.10.30	李芳忠
012		依業務要求增加車載料號	2020.10.04	何東華
013		依業務要求增加車載料號	2020.10.14	何東華

TABLE. 1

serial NO.	Pin request		view options	material	Remark
	fill in key	void pins	cap/acetate tape	housing	
A001BIAX	_____	_____	cap/acetate tape	B	
A001CIAX	_____	_____	cap/acetate tape	C	
A900CIAX	NO.21	NO.21	add cap view	C	
A004BIAX	_____	_____	cap/acetate tape	B	
A650CIAX	_____	NO.15,16,19,20	add cap view	C	
A001RIAX	_____	_____	cap/acetate tape	R	
A004RIAX	_____	_____	cap/acetate tape	R	
A651RIAX	_____	NO.3,4,5,6	cap/acetate tape	R	

TABLE. 2

No. of PIN/ROW	Dimension Information	
	A	B
02	2.54	5.58
03	5.08	8.12
04	7.62	10.66
05	10.16	13.20
06	12.70	15.74
07	15.24	18.28
08	17.78	20.82
09	20.32	23.36
10	22.86	25.90
11	25.40	28.44
12	27.94	30.98
13	30.48	33.52
14	33.02	36.06
15	35.56	38.60
16	38.10	41.14
17	40.64	43.68
18	43.18	46.22
19	45.72	48.76
20	48.26	51.30
21	50.80	53.84
22	53.34	56.38
23	55.88	58.92
24	58.42	61.46
25	60.96	64.00
26	63.50	66.54
27	66.04	69.08
28	68.58	71.62
29	71.12	74.16
30	73.66	76.70
31	76.20	79.24
32	78.74	81.78
33	81.28	84.32
34	83.82	86.86
35	86.36	89.40
36	88.90	91.94
37	91.44	94.48
38	93.98	97.02
39	96.52	99.56
40	99.06	102.10

格菱股份有限公司 Greenconn Corporation		GENERAL TOLERANCE		DESIGNED: 何東華	DATE: 2020.10.14	DWG. NO. CSHC206-CAXXXXA	TITLE. 2.54 FEMALE HEADER DUAL ROWS SMT TYPE CONNECTOR
		X.*±5.0'	X.±0.30	CHECKED:	DATE:		
REV. 013	UNIT. mm	SCALE. 3:1	PAGE. 2/2	CO SINGED: 廖世龍	DATE: 2020.10.14	PART NO. CSHC206-XXXX AXXXX1AX	
				APPROVED:	DATE:		