

Frequency Mixer

Level 13 (LO Power +13 dBm) 0.5 to 600 MHz

ADE-1MHW+



Generic photo used for illustration purposes only
CASE STYLE: CD542

+RoHS Compliant
The +Suffix identifies RoHS Compliance. See our web site for RoHS Compliance methodologies and qualifications



Available Tape and Reel at no extra cost

Reel Size	Devices/Reel
7"	20, 50, 100, 200
13"	500, 1000

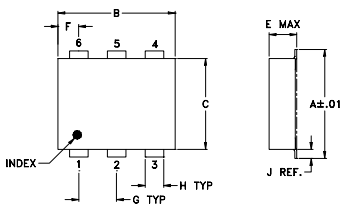
Maximum Ratings

Operating Temperature	-40°C to 85°C
Storage Temperature	-55°C to 100°C
RF Power	200mW
IF Current	40mA
Permanent damage may occur if any of these limits are exceeded.	

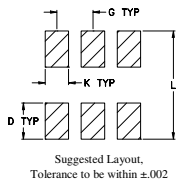
Pin Connections

LO	6
RF	3
IF	2
GROUND	1,4,5

Outline Drawing



PCB Land Pattern

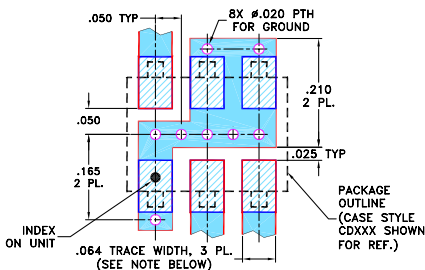


Suggested Layout, Tolerance to be within ±.002

Outline Dimensions (inch/mm)

A	B	C	D	E	F	G
.272	.310	.220	.100	.112	.055	.100
6.91	7.87	5.59	2.54	2.84	1.40	2.54
H	J	K	L	wt		
.030	.026	.065	.300	grams		
0.76	0.66	1.65	7.62	0.20		

Demo Board MCL P/N: TB-03 Suggested PCB Layout (PL-052)



- NOTES: 1. TRACE WIDTH IS SHOWN FOR ROGERS RO4350B WITH DIELECTRIC THICKNESS .030" ± .002"; COPPER: 1/2 OZ. EACH SIDE. FOR OTHER MATERIALS TRACE WIDTH MAY NEED TO BE MODIFIED.
2. BOTTOM SIDE OF THE PCB IS CONTINUOUS GROUND PLANE.
- DENOTES PCB COPPER LAYOUT WITH SMOBC (SOLDER MASK OVER BARE COPPER)
 - DENOTES COPPER LAND PATTERN FREE OF SOLDER MASK

Features

- low conversion loss, 5.2 dB typ.
- excellent L-R isolation, 53 dB typ.
- excellent IP3, 17 dBm typ.
- aqueous washable
- protected by US patent 6,133,525

Applications

- HF/VHF/UHF receivers

Electrical Specifications

FREQUENCY (MHz)	CONVERSION LOSS (dB)	LO-RF ISOLATION (dB)			LO-IF ISOLATION (dB)			IP3 at center band (dBm)						
		L	M	U	L	M	U							
0.5-600	DC-600	63	50	53	32	43	20	56	40	44	25	30	20	17

1 dB COMP.: +9 dBm typ.

L = low range [f_L to $10 f_L$]
m = mid band [$2f_L$ to $f_U/2$]

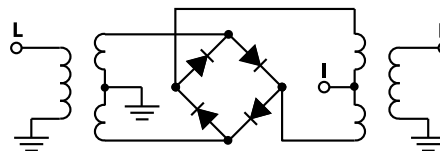
M = mid range [$10 f_U$ to $f_U/2$]

U = upper range [$f_U/2$ to f_U]

Typical Performance Data

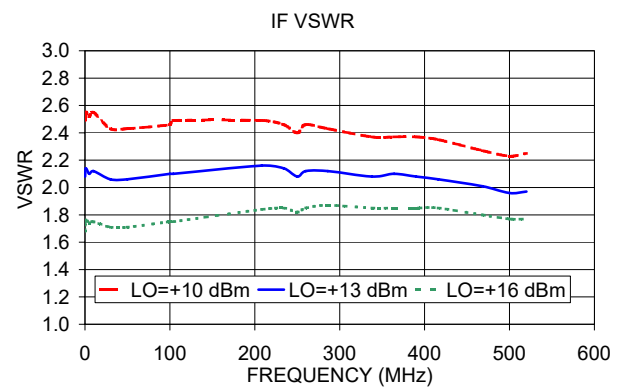
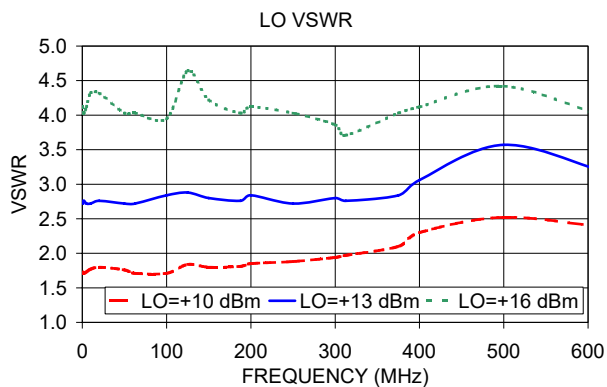
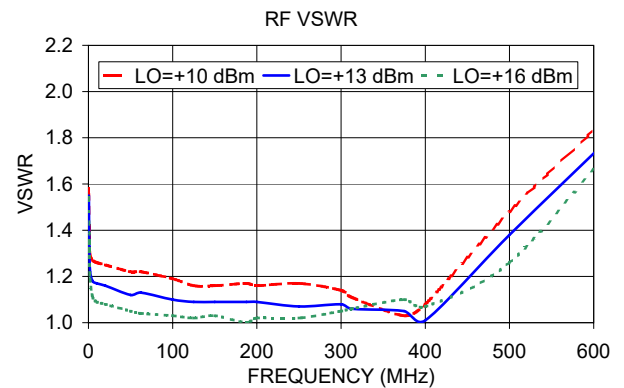
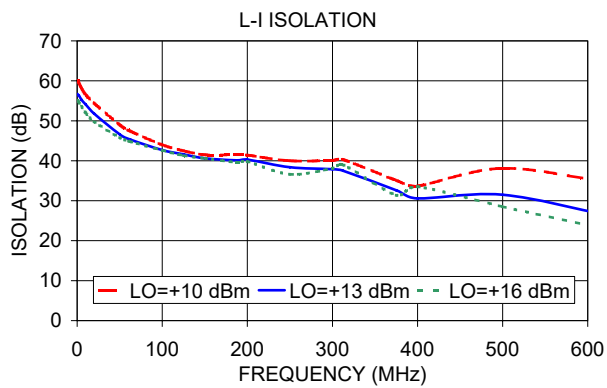
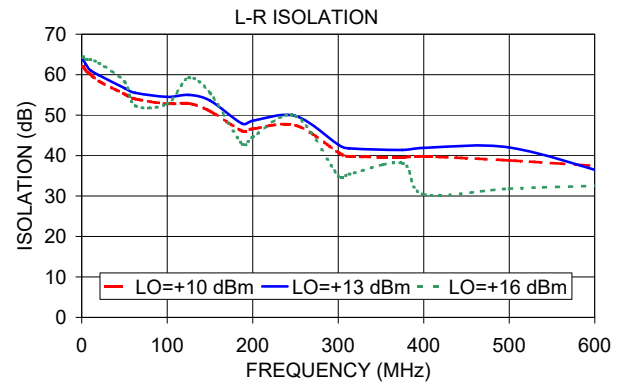
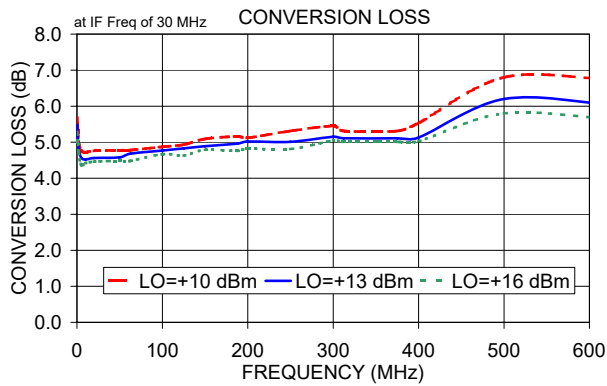
Frequency (MHz)	Conversion Loss (dB)		Isolation L-R (dB)		Isolation L-I (dB)		VSWR RF Port (:1)		VSWR LO Port (:1)	
	LO	LO +13dBm	LO	LO +13dBm	LO	LO +13dBm	LO	LO +13dBm	LO	LO +13dBm
0.50	30.50	5.48	63.60	63.60	56.70	56.70	1.55	1.55	2.76	2.76
1.00	31.00	5.16	63.60	63.60	56.40	56.40	1.33	1.33	2.72	2.72
2.00	32.00	4.81	63.60	63.60	56.40	56.40	1.22	1.22	2.76	2.76
5.00	35.00	4.57	62.50	62.50	55.30	55.30	1.18	1.18	2.72	2.72
10.00	40.00	4.52	61.10	61.10	54.10	54.10	1.17	1.17	2.72	2.72
20.00	50.00	4.56	59.90	59.90	51.80	51.80	1.16	1.16	2.76	2.76
50.00	80.00	4.58	56.70	56.70	46.60	46.60	1.12	1.12	2.72	2.72
62.59	92.59	4.68	55.50	55.50	45.30	45.30	1.13	1.13	2.72	2.72
100.00	130.00	4.77	54.50	54.50	42.70	42.70	1.10	1.10	2.84	2.84
125.09	155.09	4.83	55.00	55.00	41.60	41.60	1.09	1.09	2.88	2.88
150.00	180.00	4.89	53.60	53.60	40.60	40.60	1.09	1.09	2.80	2.80
187.58	217.58	4.96	47.90	47.90	40.10	40.10	1.09	1.09	2.76	2.76
200.00	230.00	5.02	48.60	48.60	40.30	40.30	1.09	1.09	2.84	2.84
250.00	280.00	5.01	49.80	49.80	38.40	38.40	1.07	1.07	2.72	2.72
300.00	330.00	5.15	42.70	42.70	37.90	37.90	1.08	1.08	2.80	2.80
312.57	342.57	5.11	41.80	41.80	37.50	37.50	1.06	1.06	2.76	2.76
375.06	405.06	5.11	41.40	41.40	32.60	32.60	1.05	1.05	2.84	2.84
400.00	430.00	5.13	41.90	41.90	30.60	30.60	1.01	1.01	3.06	3.06
500.00	530.00	6.20	42.00	42.00	31.50	31.50	1.38	1.38	3.57	3.57
625.04	655.04	6.05	35.00	35.00	26.30	26.30	1.82	1.82	3.16	3.16

Electrical Schematic



Notes

- A. Performance and quality attributes and conditions not expressly stated in this specification document are intended to be excluded and do not form a part of this specification document.
B. Electrical specifications and performance data contained in this specification document are based on Mini-Circuit's applicable established test performance criteria and measurement instructions.
C. The parts covered by this specification document are subject to Mini-Circuits standard limited warranty and terms and conditions (collectively, "Standard Terms"); Purchasers of this part are entitled to the rights and benefits contained therein. For a full statement of the Standard Terms and the exclusive rights and remedies thereunder, please visit Mini-Circuits' website at www.minicircuits.com/MCLStore/terms.jsp



Notes

- A. Performance and quality attributes and conditions not expressly stated in this specification document are intended to be excluded and do not form a part of this specification document.
- B. Electrical specifications and performance data contained in this specification document are based on Mini-Circuit's applicable established test performance criteria and measurement instructions.
- C. The parts covered by this specification document are subject to Mini-Circuits standard limited warranty and terms and conditions (collectively, "Standard Terms"); Purchasers of this part are entitled to the rights and benefits contained therein. For a full statement of the Standard Terms and the exclusive rights and remedies thereunder, please visit Mini-Circuits' website at www.minicircuits.com/MCLStore/terms.jsp