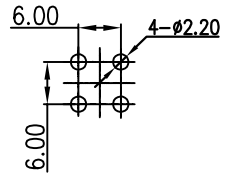
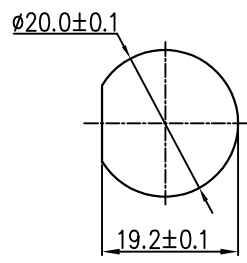


REV.	ECN NO.	DESCRIPTION	SIGN	DATE
C1	N/A	INITIAL DRAWING	Liu	2020/05/17

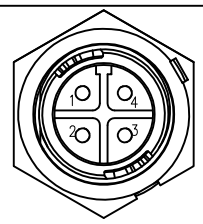


4 Pin
PCB Layout



Recommended Panel Cut-Out

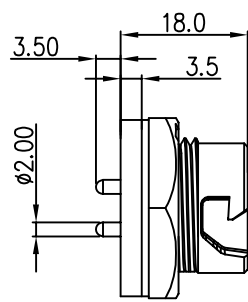
23XXX535-02
Pin Number



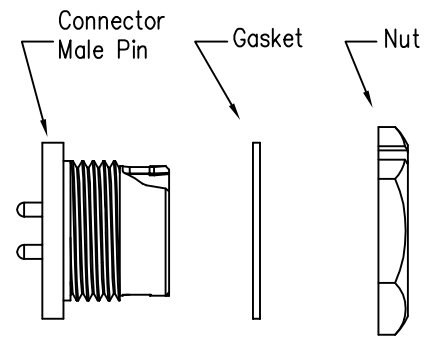
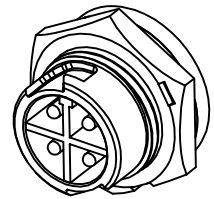
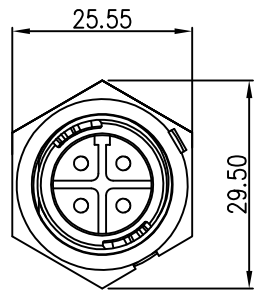
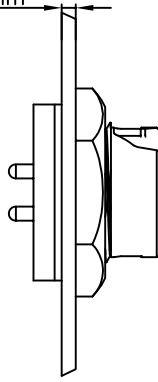
4 Pin

P/N: 23004535-02

Pin Assignments
Front View



Panel T: Max 2.5mm



Specification:

1. Operation Temperature: -45°C~105°C.
2. Insulation Resistance: 100MΩ at DC500V.
3. Contact Resistance: <10mΩ.
4. Withstand Voltage: 2000V AC
5. Operating Current: 15A
6. Operating Voltage: AC 300V
7. Waterproof Rate: IP67 (Mated)
8. Housing: Nylon, Black
9. Male Pin: Copper Alloy, Gold Plated
10. Gasket: Silicon Gray
11. Panel Nut: Nylon, Orange
12. Torque Rate: 0.8~1.0N·m
13. RoHS Compliant.
14. Mating Cap P/N: 806-00047-00

UNIT:mm	
TOLERANCE	
.X	±0.25
.XX	±0.15
.XXX	±0.05
ANGLES	±1°

DESCRIPTION Middle Series Push Lock Front Mount With Male Pin			
SCALE:	1:1	SHEET	1 OF 1
REV.	C1	SIZE	A4
* : Inspection Item			



PART NO	23004535-02	DRAWN BY	Liu	DATE	2020/05/17
DWG NO		CHECKED BY	Mo	DATE	2020/05/17
CUSTOMER		APPROVED BY	Adley	DATE	2020/05/17

THIS INFORMATION IS CONFIDENTIAL AND IS DISCLOSED TO YOU ON CONDITION THAT NO FURTHER DISCLOSURE IS MADE BY YOU TO OTHER THAN CHOGORI PERSONNEL WITHOUT AUTHORIZATION FROM CHOGORI CORP.