

0005

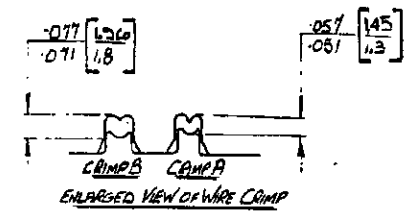
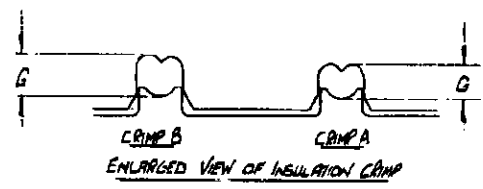
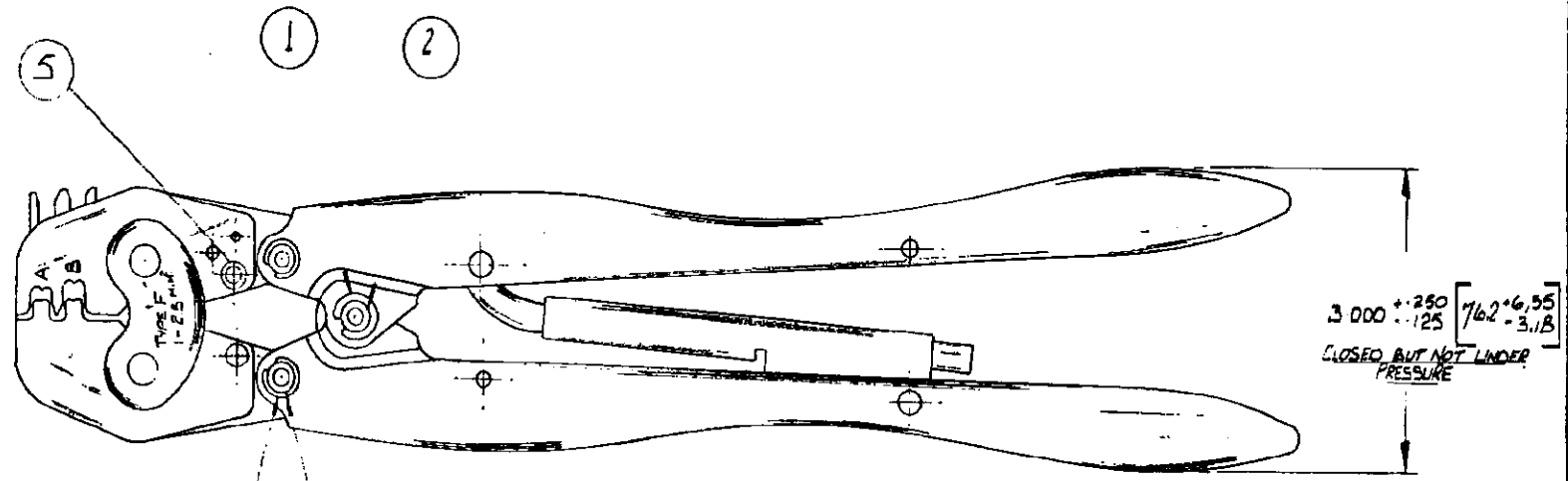
AMP OF GB

081 954 7463

06/12 '94 14:34

3/4 ANGLE (AMERICAN) PROJECTION


DIMENSIONS IN INCHES. DO NOT SCALE PRINT
DIMENSIONS THIS [] IN N.N.



ITEM NO	PART NO	QTY	DESCRIPTION
1	21045-6	2	RETAINING RING
2	300449	1	PIN
3	21045-3	4	RETAINING RING
4	300432	2	PIN
5	39207	1	PIN ADJUSTMENT

WIRE AWG	#	I	CRIMP
.125	[5.18]		A
.105	[2.64]		A
.160	[4.00]		B
.140	[3.56]		B

NOTE:-
1. FOR REPLACEMENT OF PARTS OTHER THAN ITEMISED, TOOL SHOULD BE SENT TO OUR TOOL REPAIR DIVISION TO ENSURE PROPER CERTI-CRIMP RATCHET ADJUSTMENT.
2. TOOL TO BE GAUGED WHEN HANDLES ARE CLOSED BUT NOT UNDER PRESSURE.

				AIRCRAFT-MARINE PRODUCTS (GREAT BRITAIN) LTD 1968		CUSTOMER COPY REFERENCE ONLY	
				MATERIAL AND FINISH		 AIRCRAFT-MARINE PRODUCTS (GREAT BRITAIN) LTD. STAMFORD, HODDLE	
				WIRE - RANGE - INSULATION 1-25 MM ²		TYPE F-F	
				TOLERANCE EXCEPT AS NOTED ± 0.01		SCALE 1:1	
				LTR REVISION RECORD		DOC NO B G-575938	
				DATE		MADE IN GREAT BRITAIN	

8 7 6 5 4 3 2