

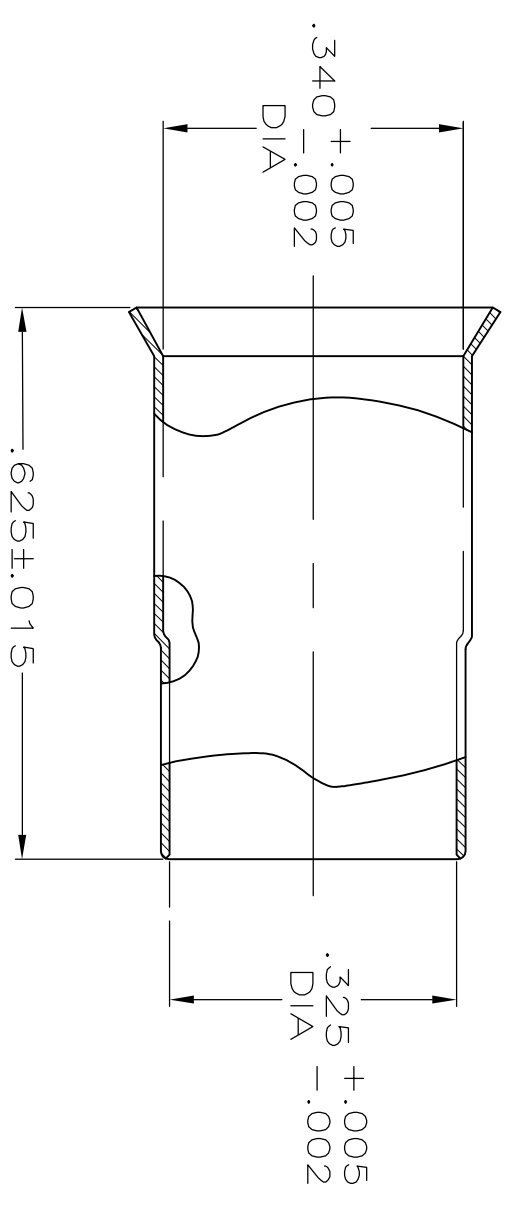
THIS DRAWING IS UNPUBLISHED.
 RELEASED FOR PUBLICATION
 ALL RIGHTS RESERVED.
 COPYRIGHT - TE Connectivity

REVISIONS					
P	LTR	DESCRIPTION	DATE	DMN	APVD
G1		REVISED PER ECR-17-009545	04AUG2017	AS	RS

1 COPPER ALLOY.

2 TIN-LEAD PLATE PER ASTM-B-545, 2.54 μm [.000100] MIN THICKNESS, WITH SUPPLEMENTAL ANTI FRETTING LUBRICANT.

3 TIN PLATE PER ASTM-B-545, 2.54 μm [.000100] MIN THICKNESS, WITH SUPPLEMENTAL ANTI FRETTING LUBRICANT.



THIS DRAWING IS A CONTROLLED DOCUMENT.					
DIMENSIONS: INCHES		TOLERANCES UNLESS OTHERWISE SPECIFIED:			
		0 PLC	±		
		1 PLC	±		
		2 PLC	±		
		3 PLC	±		
		4 PLC ANGLES	±		
MATERIAL		FINISH			
DMN	M. SNEED	24SEP82			
CHK	D. SMITH	12OCT82			
APVD	M. SNEED	12OCT82			
PRODUCT SPEC					
APPLICATION SPEC					
WEIGHT	0.000000				
CUSTOMER DRAWING					
		TE Connectivity			
FERRULE, STEPDOWN		PART NUMBER			
SIZE	A3	CAGE CODE	DRAWING NO	RESTRICTED TO	
	00779	331256		-	
SCALE	4:1	SHEET	1	OF	1
REV	G1				

SUPERCEDED BY	9-331256-0	3	9-331256-1
		3	9-331256-0
		-	1-331256-4
		1	1-331256-0
OBSOLETE		2	331256