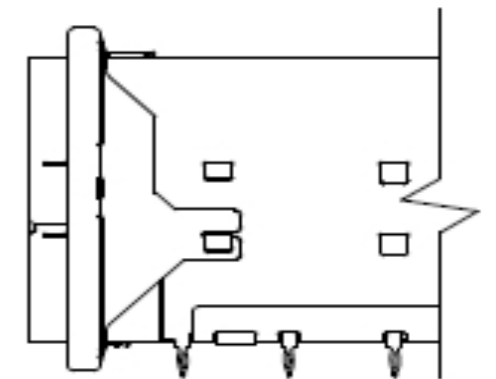
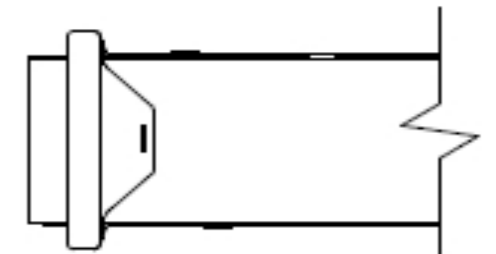
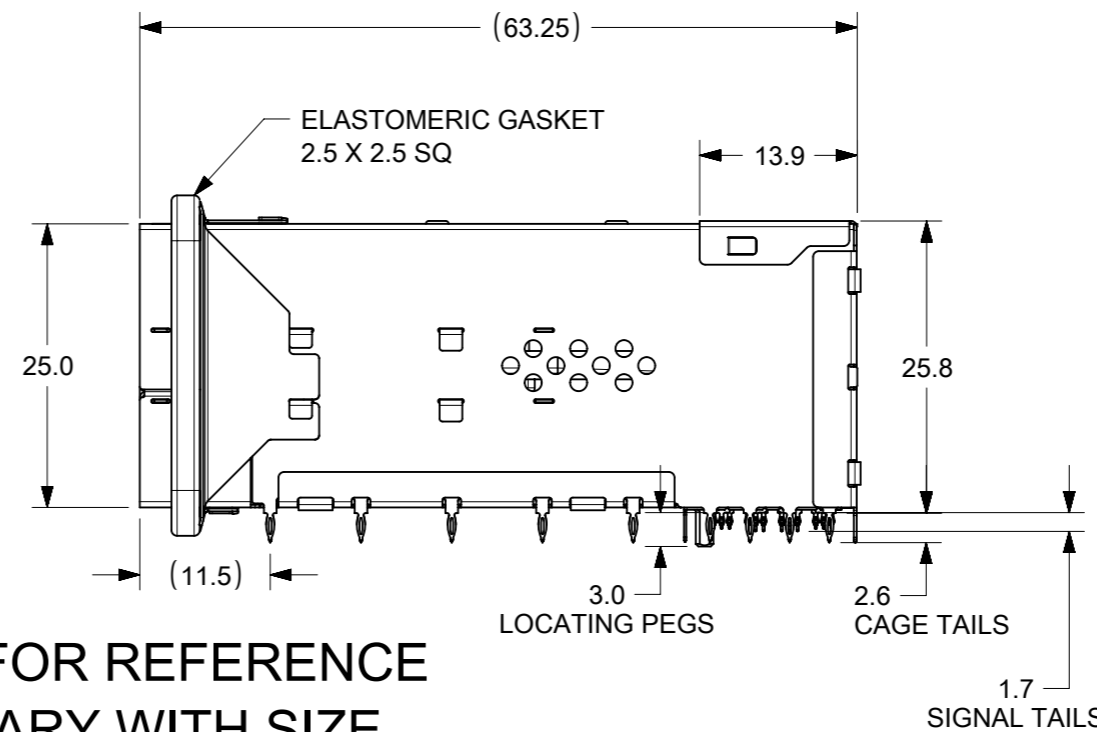


NOTES:

- MATERIAL:
 - CAGE: NICKEL SILVER
 - CONNECTOR HOUSING: GLASS FILLED THERMOPLASTIC, UL: 94V-0, COLOR: BLACK
 - LIGHT PIPES: POLYCARBONATE, 94 HB, COLOR: CLEAR (WEIGHT OF INDIVIDUAL LIGHT PIPE LESS THAN 1 GRAM)
 - TERMINALS: HIGH PERFORMANCE COPPER ALLOY
 - FRONT SHIELD WALL: COPPER ALLOY
 - LIGHT PIPE HOUSING: ZINC ALLOY
 - ELASTOMERIC GASKET: SILVER IMPREGNATED SILICONE
- FINISH
 - TERMINALS: CONTACT AREA: 0.76 μm MIN. HARD GOLD OVER 3.8 μm MIN. NICKEL.
 - COMPLIANT TAIL: 0.7-1.5 μm MATTE TIN OVER 0.7-1.5 μm NICKEL
 - FRONT SHIELD WALL: 0.7-1.5 μm NICKEL OVERALL
 - LIGHT PIPE HOUSING: 2.0 μm NICKEL OVER 0.7 μm COPPER
- 2X4 CONFIGURATION SHOWN FOR REFERENCE, SEE CHART FOR AVAILABLE OPTIONS
- REFER TO PS-170071-0001 FOR ALL ELECTRICAL, MECHANICAL AND ENVIRONMENTAL SPECIFICATIONS.
- REFER TO AS-170071-0001 FOR CONNECTOR MOUNTING AND REWORK INFORMATION.
- REFER TO AS-170071-0002 FOR PCB ROUTING RECOMMENDATIONS.
- ALL VISIBLE EXTERIOR SURFACES TO BE CLASS "B" (BOTTOM OF CONNECTOR IS CLASS "C")
CAGE SURFACES TO CONFORM TO THE MOLEX COSMETIC DOC PS-45499-002.



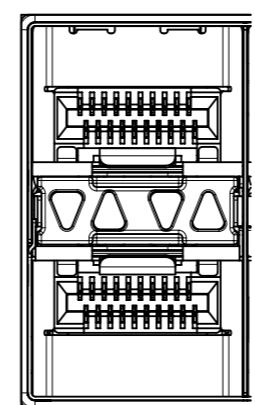
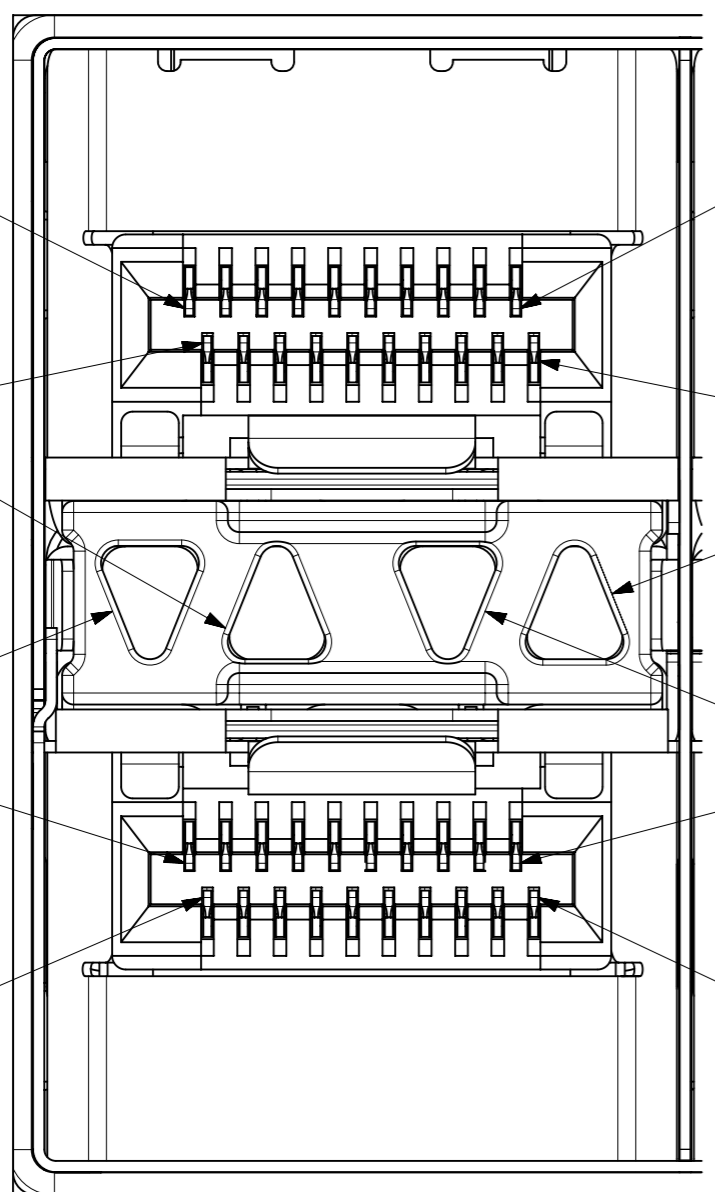
170071-101*
APPEARANCE

170071-40** SHOWN FOR REFERENCE
APPEARANCE MAY VARY WITH SIZE

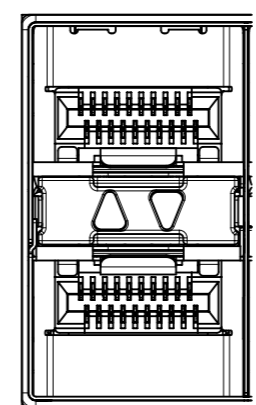
NUMBER OF PORTS	PART NUMBER	DIM X	DIM Y
2X1	170071101*	14.50	15.10
2X2	170071201*	28.75	29.35
2X4	170071401*	57.25	57.85
2X6	170071601*	85.75	86.35
2X8	170071801*	114.25	114.85
2X8	170071121*	171.25	171.85

* DESIGNATES LIGHT PIPE CONFIGURATIONS, SEE SHEET 2.

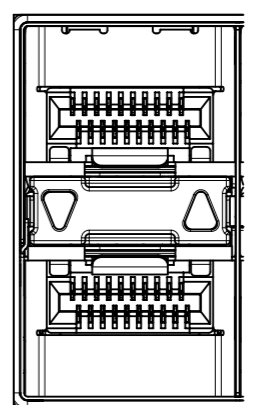
THIS DRAWING CONTAINS INFORMATION THAT IS PROPRIETARY TO MOLEX ELECTRONIC TECHNOLOGIES, LLC AND SHOULD NOT BE USED WITHOUT WRITTEN PERMISSION		CURRENT REV DESC: ADD REMARKS IN NOTE		molex			
DIMENSION UNITS	SCALE	NOTE					
mm	NTS			ZSFP+ STACKED ASSY METAL SPRING FINGER			
GENERAL TOLERANCES (UNLESS SPECIFIED)		EC NO: 173046		PRODUCT CUSTOMER DRAWING			
ANGULAR TOL ± 0.5°		DRWN: DTAN10 2018/03/01		DOCUMENT NUMBER			
4 PLACES ±		CHK'D: HCGOH 2018/03/05		1700710002			
3 PLACES ±		APPR: SHONG 2018/03/06		DOC TYPE DOC PART REVISION			
2 PLACES ± 0.13		INITIAL REVISION:		PSD 000 A			
1 PLACE ± 0.25		DRWN: DTAN10 2018/03/01		170071			
0 PLACES ±		APPR: SHONG 2018/03/06		SEE TABLE			
DRAFT WHERE APPLICABLE MUST REMAIN WITHIN DIMENSIONS		THIRD ANGLE PROJECTION	DRAWING	SERIES	MATERIAL NUMBER	CUSTOMER	SHEET NUMBER
			A3-SIZE	170071	SEE TABLE	GENERAL MARKET	1 OF 4



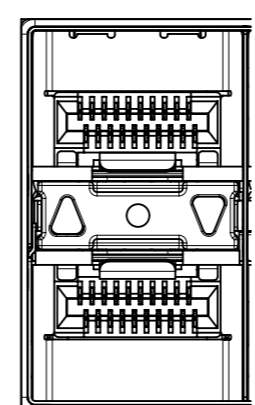
4 LIGHT PIPES
170071-**11



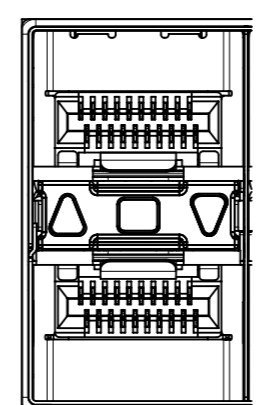
INNER 2 LIGHT PIPES
170071-**12



OUTER 2 LIGHT PIPES
DOWN / UP
170071-**13



OUTER 2 LIGHT PIPES
UP / DOWN
170071-**14

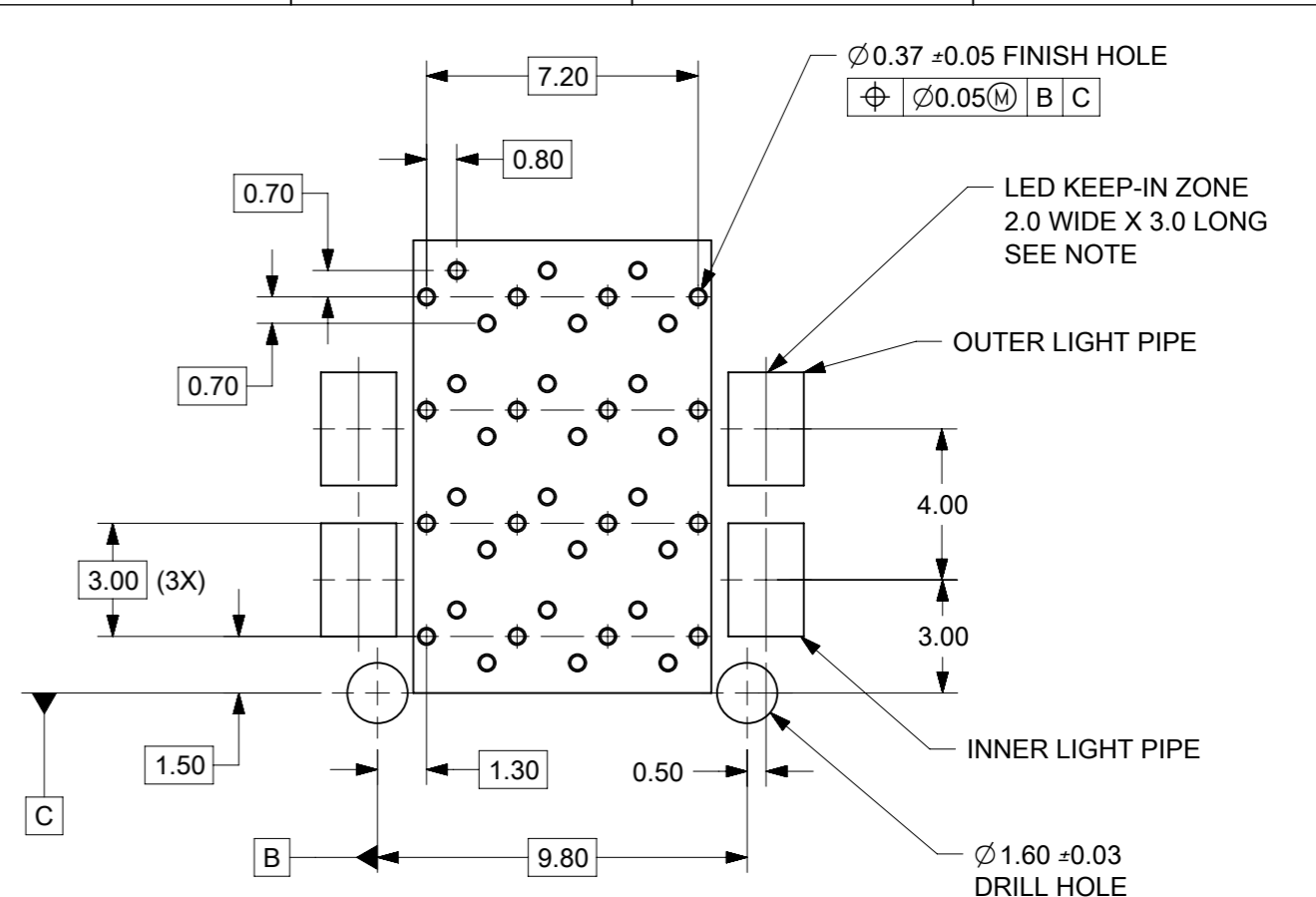
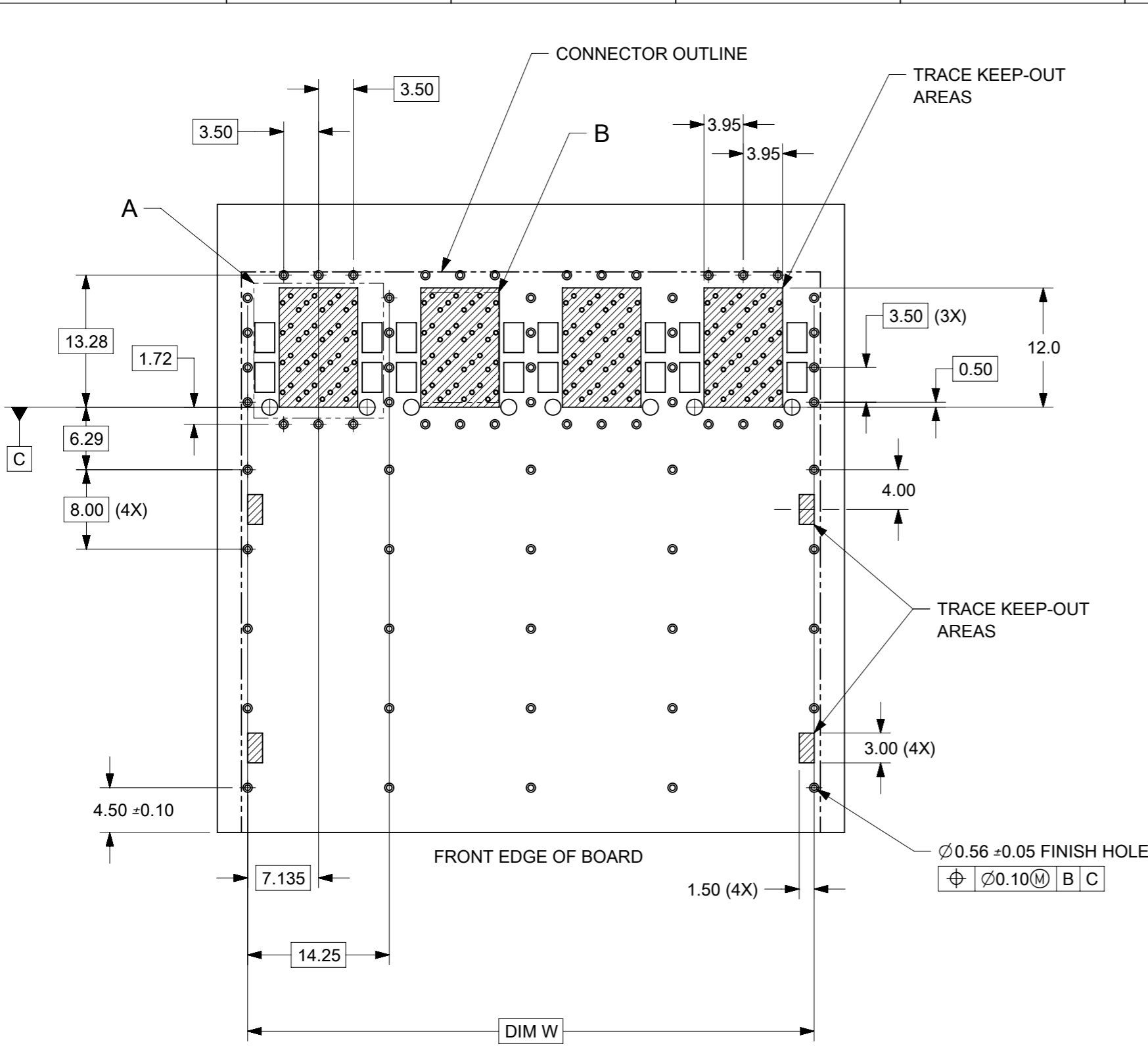


3 LIGHT PIPES
UP / MIDDLE / DOWN
170071-**15

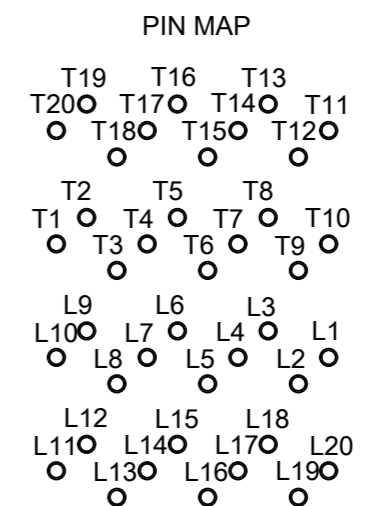
PART NUMBER	DESCRIPTION
170071-**11	4 LIGHT PIPES
170071-**12	INNER 2 PORTS
170071-**13	OUTER DOWN/UP
170071-**14	OUTER UP/DOWN
170071-**15	3 LIGHT PIPES

** DESIGNATES PORT SIZE

THIS DRAWING CONTAINS INFORMATION THAT IS PROPRIETARY TO MOLEX ELECTRONIC TECHNOLOGIES, LLC AND SHOULD NOT BE USED WITHOUT WRITTEN PERMISSION		CURRENT REV DESC: ADD REMARKS IN NOTE		molex	
DIMENSION UNITS mm	SCALE NTS	GENERAL TOLERANCES (UNLESS SPECIFIED)			
GENERAL TOLERANCES (UNLESS SPECIFIED)		EC NO: 173046		PRODUCT CUSTOMER DRAWING	
ANGULAR TOL	± 0.5°	4 PLACES	DRWN: DTAN10	2018/03/01	DOCUMENT NUMBER 1700710002
4 PLACES	±	3 PLACES	CHK'D: HCGOH	2018/03/05	
3 PLACES	±	2 PLACES	APPR: SHONG	2018/03/06	DOC TYPE PSD
2 PLACES	± 0.13	INITIAL REVISION:		DOC PART 000	REVISION A
1 PLACE	± 0.25	DRWN: DTAN10	2018/03/01	1700710002	
0 PLACES	±	APPR: SHONG	2018/03/06	SEE TABLE	
DRAFT WHERE APPLICABLE MUST REMAIN WITHIN DIMENSIONS		THIRD ANGLE PROJECTION	DRAWING A3-SIZE	SERIES 170071	CUSTOMER GENERAL MARKET
				MATERIAL NUMBER SEE TABLE	SHEET NUMBER 2 OF 4



DETAIL A
SCALE 5:1

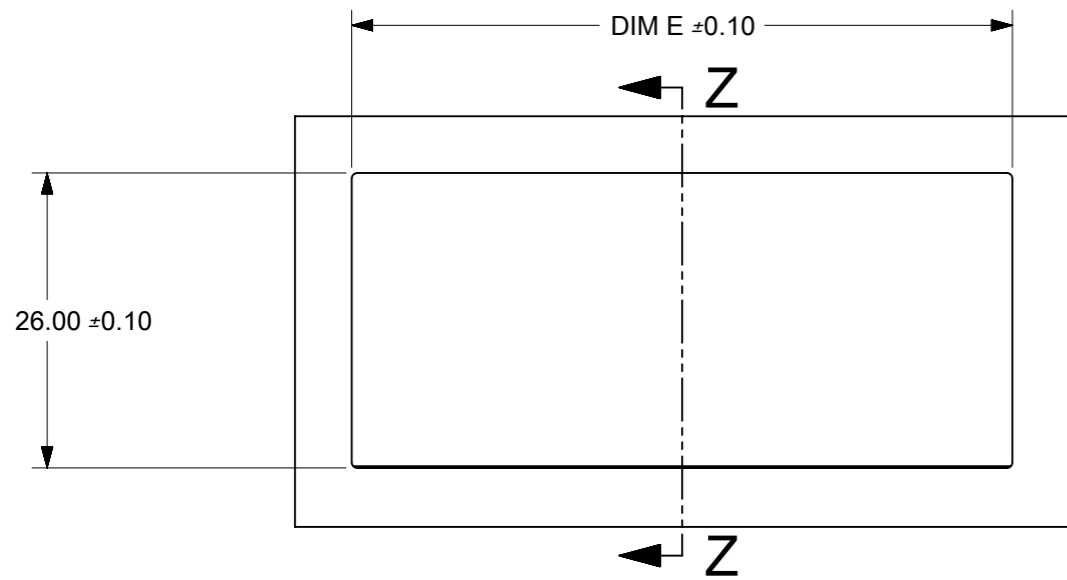


DETAIL B
SCALE 5:1

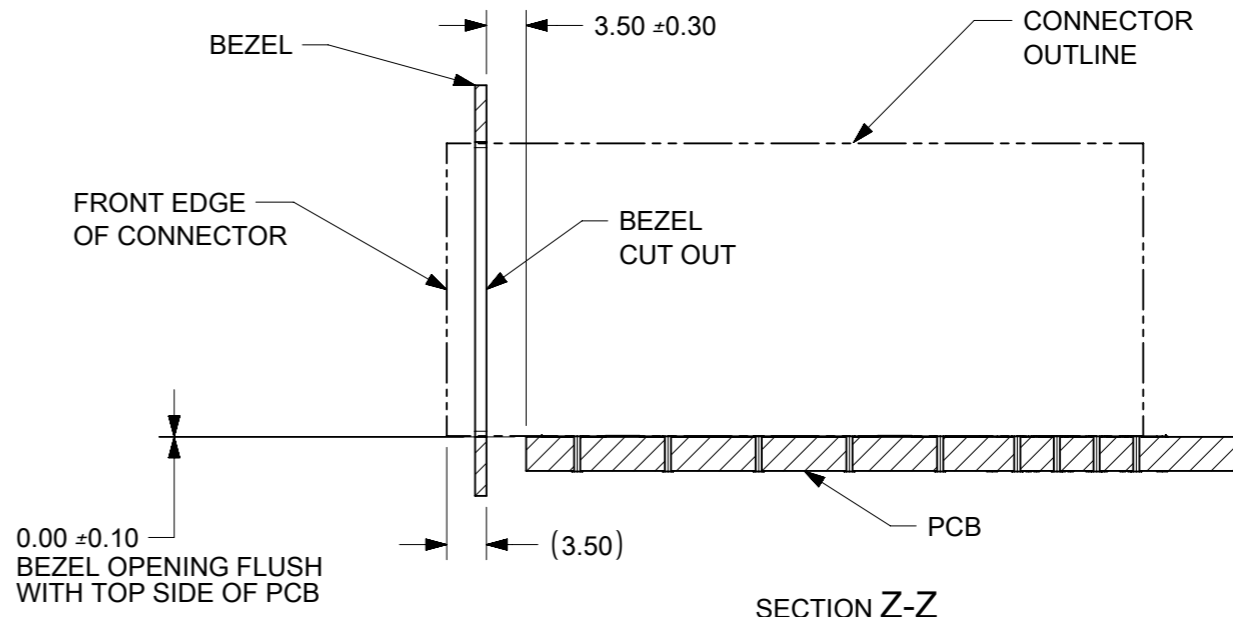
PORT SIZE	DIM W	HOLE CHART		
		SIGNALS (Ø0.37)	EMI CAGE (Ø0.56)	LOCATING PEG (Ø1.60)
2X1	14.25	40	24	2
2X2	28.50	80	39	4
2X4	57.00	160	69	8
2X6	85.50	240	99	12
2X8	114.00	320	129	16
2X12	171.00	480	189	24

NOTE:
LED PACKAGE SIZE AND POSITION SHALL NOT VIOLATE THE KEEP IN ZONE.
LED PLACEMENT SHOULD BE CENTERED WITHIN THE ZONE FOR OPTIMAL LIGHT TRANSMISSION BUT MAY BE SAFELY OFFSET ±0.50.

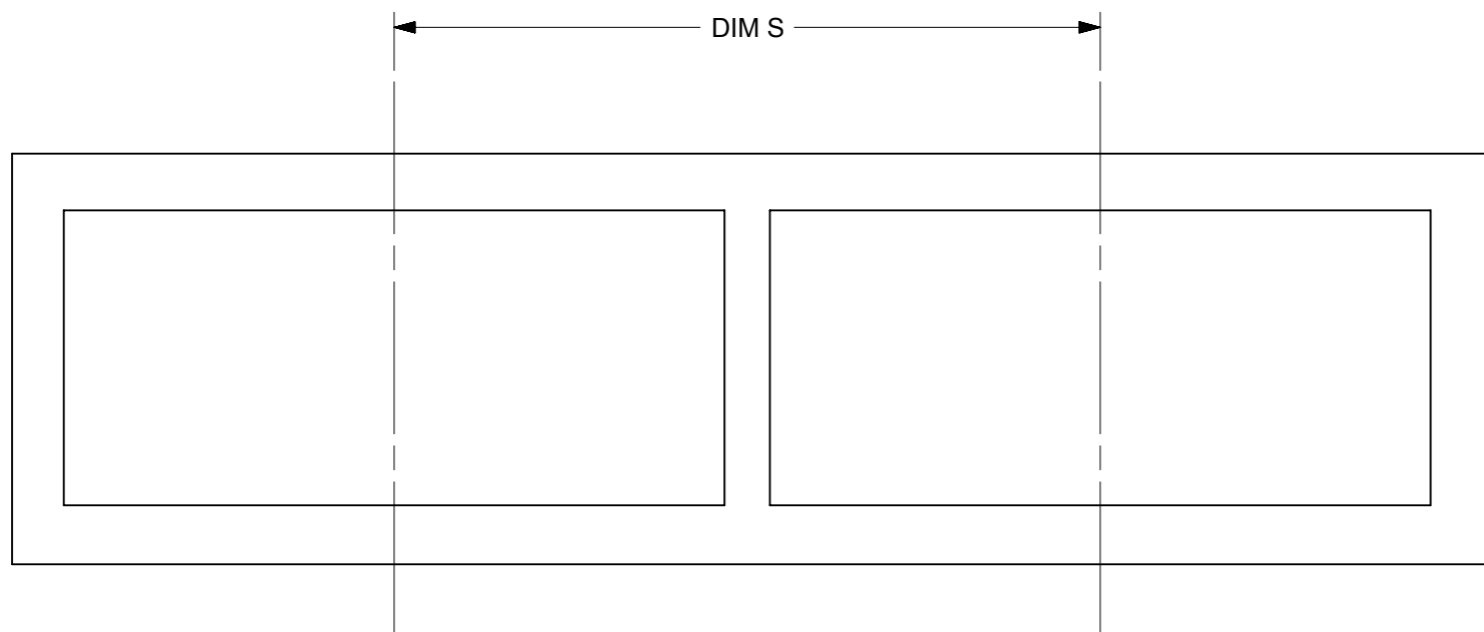
THIS DRAWING CONTAINS INFORMATION THAT IS PROPRIETARY TO MOLEX ELECTRONIC TECHNOLOGIES, LLC AND SHOULD NOT BE USED WITHOUT WRITTEN PERMISSION									
DIMENSION UNITS	SCALE	CURRENT REV DESC: ADD REMARKS IN NOTE							
mm	NTS	<p>ZSFP+ STACKED ASSY METAL SPRING FINGER</p> <p>PRODUCT CUSTOMER DRAWING</p>							
GENERAL TOLERANCES (UNLESS SPECIFIED)									
ANGULAR TOL	± 0.5°								
4 PLACES	±								
3 PLACES	±								
2 PLACES	± 0.13								
1 PLACE	± 0.25	EC NO: 173046	2018/03/01	<p>DOCUMENT NUMBER: 1700710002</p> <p>DOC TYPE: PSD</p> <p>DOC PART: 000</p> <p>REVISION: A</p>					
0 PLACES	±	DRWN: DTAN10	2018/03/01						
DRAFT WHERE APPLICABLE MUST REMAIN WITHIN DIMENSIONS		APPR: SHONG	2018/03/06						
THIRD ANGLE PROJECTION		DRAWING	SERIES	MATERIAL NUMBER	CUSTOMER	SHEET NUMBER			
		A3-SIZE	170071	SEE TABLE	GENERAL MARKET	3 OF 4			



BEZEL CUT OUT DETAIL
BEZEL THICKNESS 0.8~2.6



SECTION Z-Z



BEZEL CUT OUT FOR
CONNECTOR STACKING

CONFIGURATION	DIM E	DIM S
2X1	15.50	20.40 MINIMUM
2X2	29.75	34.65 MINIMUM
2X4	58.25	63.15 MINIMUM
2X5	72.50	77.40 MINIMUM
2X6	86.75	91.65 MINIMUM
2X8	115.25	120.15 MINIMUM
2X12	172.25	177.15 MINIMUM

THIS DRAWING CONTAINS INFORMATION THAT IS PROPRIETARY TO MOLEX ELECTRONIC TECHNOLOGIES, LLC AND SHOULD NOT BE USED WITHOUT WRITTEN PERMISSION									
DIMENSION UNITS	SCALE	CURRENT REV DESC: ADD REMARKS IN NOTE							
mm	NTS	NOTE							
GENERAL TOLERANCES (UNLESS SPECIFIED)					ZSFP+ STACKED ASSY METAL SPRING FINGER				
ANGULAR TOL	± 0.5°	EC NO: 173046			PRODUCT CUSTOMER DRAWING				
4 PLACES	±	DRWN: DTAN10 2018/03/01			DOCUMENT NUMBER				
3 PLACES	±	CHK'D: HCGOH 2018/03/05			1700710002				
2 PLACES	± 0.13	APPR: SHONG 2018/03/06			DOC TYPE				
1 PLACE	± 0.25	INITIAL REVISION:			PSD				
0 PLACES	±	DRWN: DTAN10 2018/03/01			DOC PART				
DRAFT WHERE APPLICABLE MUST REMAIN WITHIN DIMENSIONS		THIRD ANGLE PROJECTION		DRAWING		SERIES		REVISION	
				A3-SIZE		170071		A	
MATERIAL NUMBER					SHEET NUMBER				
SEE TABLE					4 OF 4				
CUSTOMER					GENERAL MARKET				