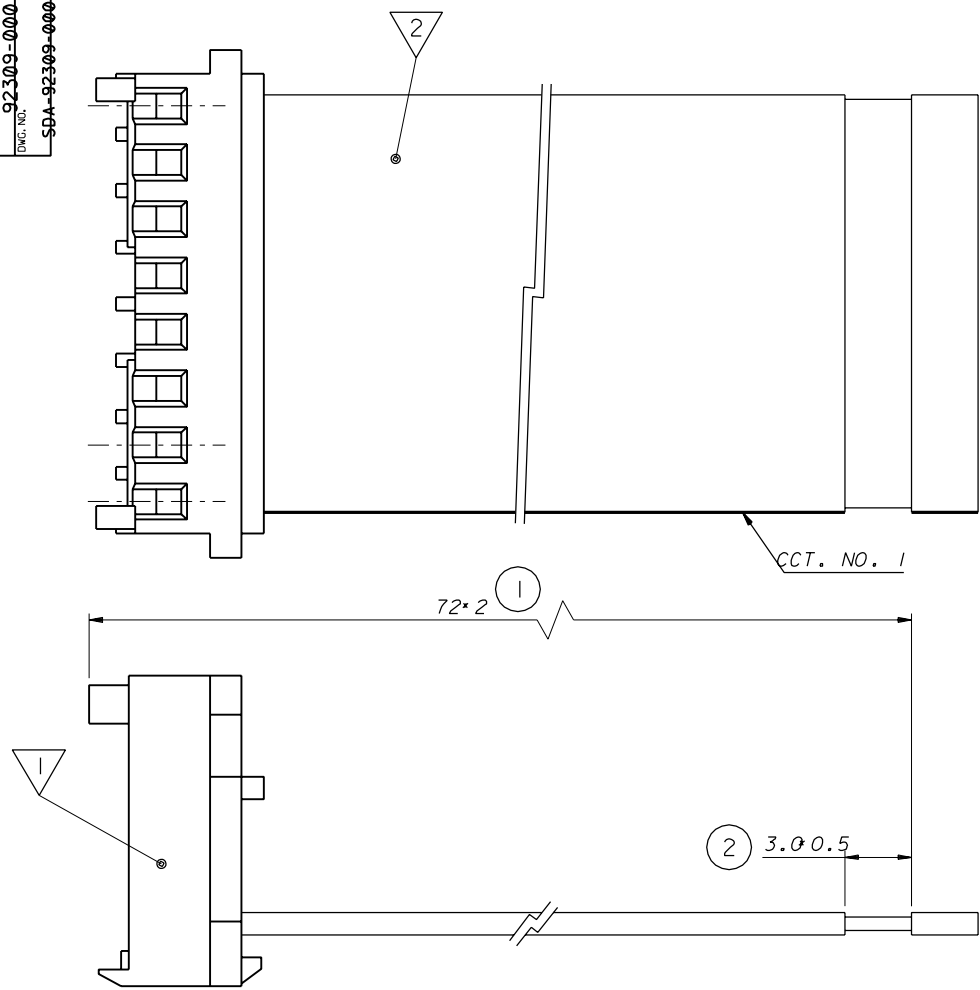


10 9 8 7 6 5 4 3 2 1

PART NO. 92309-0001
 DWG. NO. SDA-92309-0001



NOTES:
 1. SEE PRODUCT SPECIFICATION PS-7690.
 2. PACKAGING: 1000 HARNESSES PER BOX.

BILL OF MATERIALS

NO.	QTY	SUPPLIER	DESCRIPTION	PART No.	NOTE
1	1	MOLEX	12 CCT KK CONNECTOR	7720S-C12H	1
2			12 CCT RIBBON CABLE 24 AWG		

FOR PREVIOUS DRAWING ISSUES SEE MRI.	ORIGINAL RELEASE ECN E70553 97/02/18 F.P.H.	DIMENSIONS SHOWN (METRIC) INCH UNLESS OTHERWISE SPECIFIED TOLERANCES: ANGULAR ± 1/2°	DRWG BY FPH	CAD/CAM FILENAME S92309X1 DGN	REVISE ONLY ON CAD SYSTEM	SHL. REV.
	LTR REVISIONS	INCH (METRIC) 3 PLACE ± . 2 PLACE ± . 1 PLACE ±	CHK'D BY	TITLE KK HARNESS ASSEMBLY		
	DESIGN DIMENSION (PRIMARY) <input checked="" type="checkbox"/> (MM) IN.	DRAFT WHERE APPLICABLE MUST REMAIN WITHIN DIMENSIONS	APP'D BY	SHEET NO. DATE 10F1 97/02/18		
	EQUIVALENT DIMENSION (SECONDARY) <input type="checkbox"/> (MM) IN.	SCALE 5:1	SCALE	PART NO. 92309-0001	DWG NO. SDA-92309-0001	SIZE B

7132-1283 10 9 8 7 6 5 4 3 2 1