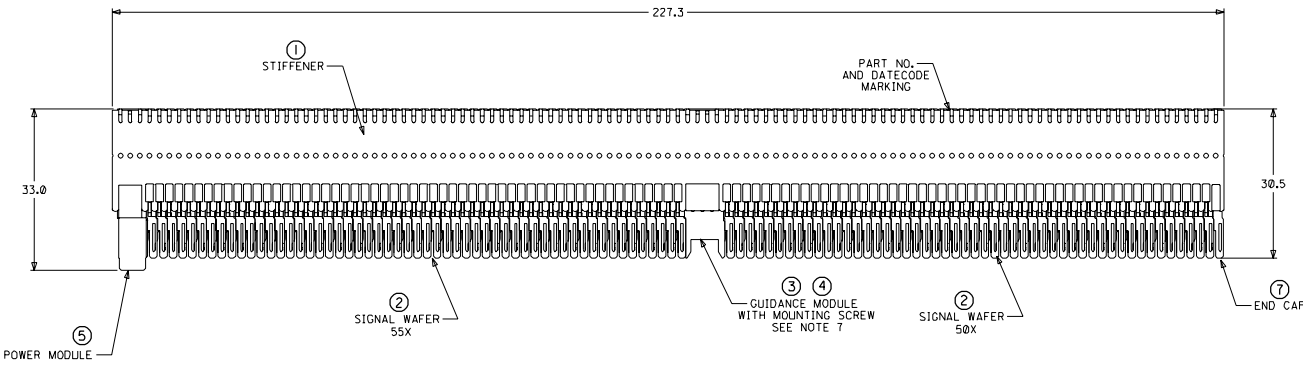
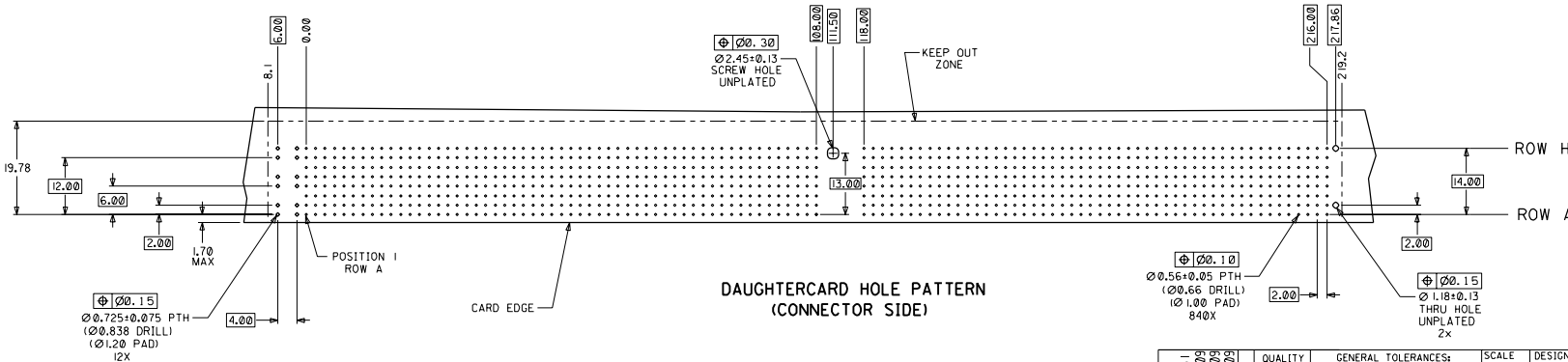
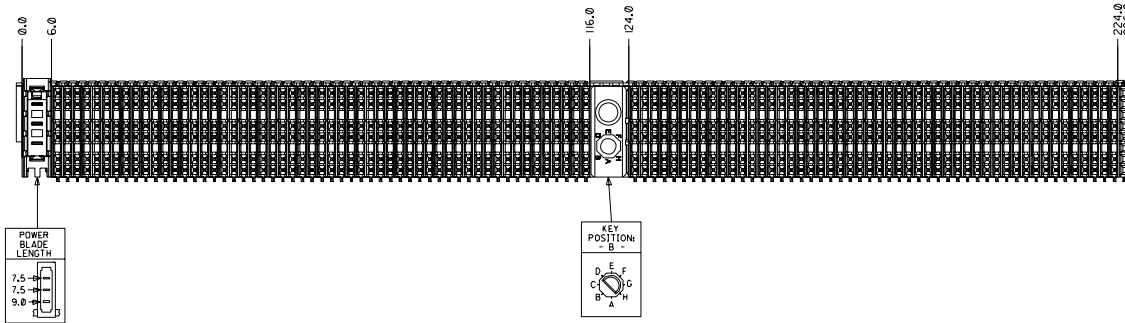


CUSTOMER: LAUREL NETWORKS.



NOTES: (UNLESS OTHERWISE SPECIFIED)

- MATERIALS: HOUSING - LIQUID CRYSTAL POLYMER (LCP), GLASS-FILLED, UL94V-0, BLACK.
TERMINALS - HIGH PERFORMANCE COPPER ALLOY.
STIFFENER - STAINLESS STEEL.
- FINISH: SELECTIVE GOLD (Au) IN CONTACT AREA, 0.00076mm MINIMUM THICKNESS; SELECTIVE TIN/LEAD (Sn/Pb) ON PCB TAILS, NICKEL (Ni) OVERALL.
- REFER TO MOLEX PRODUCT SPECIFICATION PS-74031-999 FOR PERFORMANCE SPECIFICATIONS.
- REFER TO MOLEX DOCUMENT SD-74681-002 FOR ADDITIONAL DETAIL ON THE HSD SIGNAL WAFER.
- REFER TO MOLEX DOCUMENT SD-74037-006 FOR ADDITIONAL DETAIL ON THE GUIDANCE MODULE.
- REFER TO MOLEX DOCUMENT SD-74026-002 FOR ADDITIONAL DETAIL ON THE POWER MODULE.
- MOUNTING SCREWS WILL BE BAGGED WITH EACH CONNECTOR.
- PARTS ARE PACKAGED IN TUBES PER PK-70873-5041.



ITEM	PART NUMBER	DESCRIPTION	QTY
1	74046-0227	STIFFENER	1
2	74681-0001	HSD WAFER	105
3	74037-8002	POLARIZING/GUIDE MODULE	1
4	73726-0000	GUIDE MODULE MNTG SCREW	1
5	74026-8211	POWER MODULE	1
6	74038-1002	END CAP w/PEGS	1

INITIAL RELEASE EC NO. UDT2002-0031 DRAWN: ATP 01/07/09 CHECK: LAURX 01/07/09 APPR: BIXLER 01/07/09	QUALITY SYMBOLS MAJOR: 4 CRITICAL: 3 MINOR: 0	GENERAL TOLERANCES UNLESS SPECIFIED 4 PLACES ±0. -- 2. -- 3 PLACES ±0. -- 2. -- 2 PLACES ±0. -- 2. -- 1 PLACE ±0. -- 2. -- ANGULAR: ± 2°	SCALE: 2:1 DESIGN UNITS: mm (INCH) THIRD ANGLE PROJECTION DRAWN BY & DATE: ATP 01/07/09 CHECKED BY & DATE: LAURX 01/07/09 APPROVED BY & DATE: BIXLER 01/07/09	DIMENSIONS: mm (INCH) TITLE: 8 ROW HSD DAUGHTERCARD ASSEMBLY SALES DRAWING MOLEX INCORPORATED CAD FILENAME: SD-74680-016 MATERIAL NO.: 746800016 DRAWING NO.: SD-74680-016 SHEET NO.: 1 OF 1
	DRAFT WHERE APPLICABLE MUST REMAIN WITHIN DIMENSIONS	THIS DRAWING CONTAINS INFORMATION THAT IS PROPRIETARY TO MOLEX INCORPORATED AND SHOULD NOT BE USED WITHOUT WRITTEN PERMISSION.		
	REV: A	SIZE: D		
	LBORD.DGN REV A 96/06/12 LEVEL 6	19 18 17 16 15 14 13 12 11 10 9 8 7 6 5 4 3 2 1		