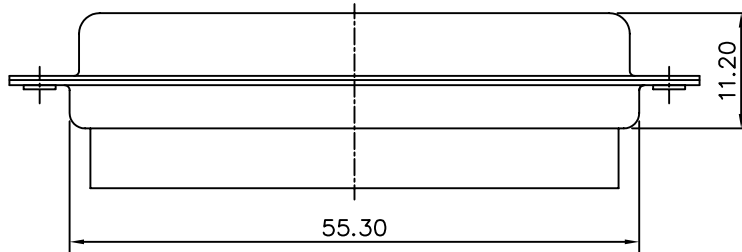
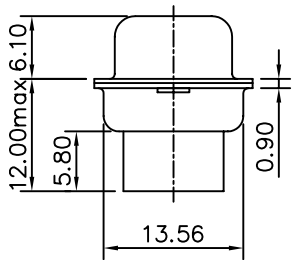
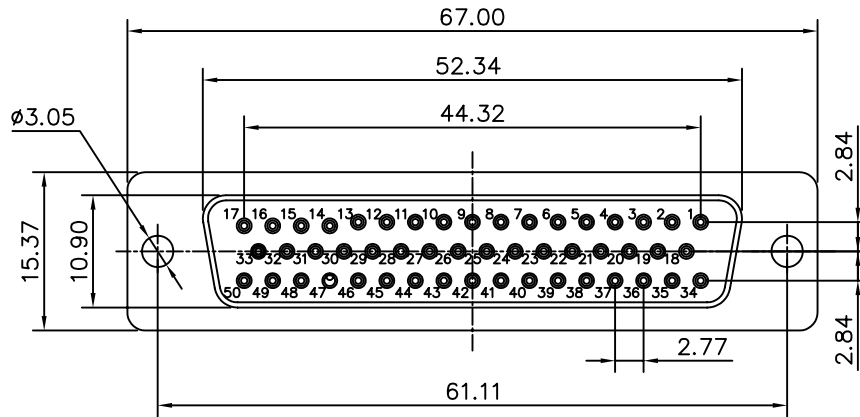


This document is the property of Amphenol Corporation and is delivered on the express condition that it is not to be disclosed, reproduced or used, in whole or in part, for manufacture or sale by anyone other than Amphenol Corporation without its prior consent, & that no right is granted to disclose or to use any information in this document.



Customer drawing

REVISIONS

SYM	ECN	DESCRIPTION	DATE	APPROVED
1			07/24/08	

D-SUB TECHNICAL DATA

SHELL : Steel, 2.5um (100u") min tin over 1.25um (50u") min nickel
 BODY : Glass filled thermoplastic.
 Flame retardant to UL94 V-0 Color Black
 ELECTRICAL : Voltage rating : 500 V RMS at 50 Hz
 Insulation resistance >5000 M Ohms
 CLIMATIC : Temperature range -55 °C up to 125°C
 MARKING : Amphenol-...(Series No.)
 Commercial reference
 Manufacturing date

PRODUCT CODE

L 177RR D 50 S

L: RoHS Compliance

177: tinned shell for receptacle

Shell Size: D

Contact type:
S:Female
P: Male

Configuration: 50

UNLESS OTHERWISE SPECIFIED TOLERANCES	APPROVAL		DATE
	U.S.	METRIC	
.X +/-	0.50	DRAWN	Ming.ma 07/24/08
.XX +/-	0.30	CHECKED	kk.wang 07/24/08
.XXX +/-	0.20	CHECKED	
FRACTIONS +/-		DRAWING FILE :	
ANGLES +/-	5°	ANGLE OF PROJECTION	
FOR MATERIALS AND FINISHES SEE NOTES			
REMOVE SHARP EDGES			
DIMENSIONS			
U.S. INCHES			
METRIC MM			

Amphenol®

TITLE		REV.
stamped and formed connector, RR series		1
SIZE	DRAWING NO.	
A4	C L177RRD50S	
SCALE	NONE	SHEET 1 OF 1