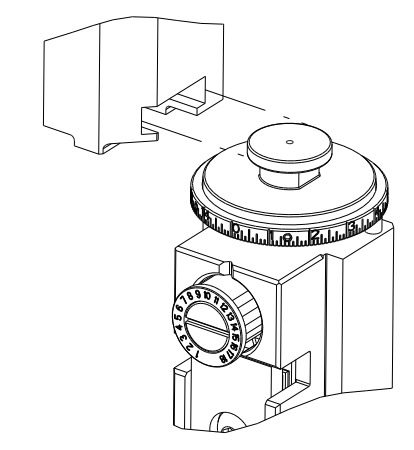


| PART NUMBER | REVISION | DESCRIPTION | FEED TYPE |
|-------------|----------|--|------------|
| 2151227-1 | G | FINE CRIMP HEIGHT ADJUST | MECHANICAL |
| 2151227-2 | G | FINE CRIMP HEIGHT ADJUST | PNEUMATIC |
| 5-2151227-1 | G | SEAL STRIPPER CRIMPER TERMINATING UNIT | MECHANICAL |
| 5-2151227-2 | G | SEAL STRIPPER CRIMPER TERMINATING UNIT | PNEUMATIC |
| 7-2151227-1 | G | MECHANICAL AND CRIMP TOOLING KIT | MECHANICAL |
| 7-2151227-2 | G | PNEUMATIC AND CRIMP TOOLING KIT | PNEUMATIC |
| 7-2151227-7 | A | CRIMP TOOLING KIT | - |

ATLANTIC VERSION TERMINATOR INTERFACE ADAPTER



| APPLICATOR DATA | | |
|-----------------|----------------|------|
| CRIMP | SIZE | TYPE |
| WIRE | 2.03 mm [.080] | F |
| INSUL | 4.06 mm [.160] | O |

APPLICATOR INSTRUCTIONS
408-35042

| TERMINAL DATA: TE TERMINAL | | TE CRIMP SPECIFICATION | |
|--|------------------------------|------------------------|----------|
| TERMINAL NAME: 2.8MM SENSOR - FLAT TYPE RECEPTACLE | | | |
| WIRE STRIP LENGTH | INSULATION DIAMETER RANGE | | |
| 4.20-4.80 mm [.165-.189 IN] | Ø1.40-2.10 mm [.055-.083 IN] | | |
| TERMINAL APPLICATION SPECIFICATION | (B)114-18144-1 | | |
| TERMINALS APPLIED | | | |
| TE TERMINAL | TE TERMINAL | TE SEAL | TE SEAL |
| (B) 968087-1 | (B) 968087-2 | 1572276-1 | 828904-1 |
| (B) 1703034-1 | (B) 1703034-2 | | |

| TERMINAL DATA: TE TERMINAL | | TE CRIMP SPECIFICATION | |
|--|------------------------------|------------------------|----------|
| TERMINAL NAME: 2.8MM SENSOR - FLAT TYPE RECEPTACLE | | | |
| WIRE STRIP LENGTH | INSULATION DIAMETER RANGE | | |
| 4.20-4.80 mm [.165-.189 IN] | Ø1.30-2.10 mm [.051-.083 IN] | | |
| TERMINAL APPLICATION SPECIFICATION | (A)114-18144-0 | | |
| TERMINALS APPLIED | | | |
| TE TERMINAL | TE TERMINAL | TE SEAL | TE SEAL |
| (A) 967542-1 | (A) 967542-2 | 1572276-1 | 828904-1 |

| TERMINAL DATA: TE TERMINAL | | TE CRIMP SPECIFICATION | |
|--|------------------------------|------------------------|----------|
| TERMINAL NAME: 2.8MM SENSOR - FLAT TYPE RECEPTACLE | | | |
| WIRE STRIP LENGTH | INSULATION DIAMETER RANGE | | |
| 4.20-4.80 mm [.165-.189 IN] | Ø1.30-2.10 mm [.051-.083 IN] | | |
| TERMINAL APPLICATION SPECIFICATION | (C)114-18148 | | |
| TERMINALS APPLIED | | | |
| TE TERMINAL | TE TERMINAL | TE SEAL | TE SEAL |
| (C) 1-968855-1 | (C) 1-968855-2 | 1572276-1 | 828904-1 |
| (C) 1-968855-3 | (C) 1-968855-4 | | |

| WIRE SIZE | CRIMP HEIGHT mm [INCH] | CRIMP HEIGHT REFERENCE SETTING |
|-----------|----------------------------|--------------------------------|
| 1.00mm2 | 1.36+/-0.05 [.054+/- .002] | 4.6 |
| 0.75mm2 | 1.27+/-0.05 [.050+/- .002] | 5.5 |
| 0.50mm2 | 1.18+/-0.05 [.046+/- .002] | 6.5 |

| WIRE SIZE | CRIMP HEIGHT mm [INCH] | CRIMP HEIGHT REFERENCE SETTING |
|-----------|----------------------------|--------------------------------|
| 1.00mm2 | 1.20+/-0.05 [.047+/- .002] | 6.3 |
| 0.75mm2 | 1.18+/-0.05 [.046+/- .002] | 6.5 |
| 0.50mm2 | 1.15+/-0.05 [.045+/- .002] | 6.8 |

| WIRE SIZE | CRIMP HEIGHT mm [INCH] | CRIMP HEIGHT REFERENCE SETTING |
|-----------------|----------------------------|--------------------------------|
| 1.00mm2 FLR/FLU | 1.20+/-0.05 [.047+/- .002] | 6.5 |
| 0.85mm2 CAVS | 1.26+/-0.05 [.050+/- .002] | 5.8 |
| 0.85mm2 AVS | 1.24+/-0.03 [.049+/- .001] | 6.0 |
| 0.75mm2 AESSX-F | 1.23+/-0.05 [.048+/- .002] | 6.2 |
| 0.75mm2 FLR/FLU | 1.18+/-0.05 [.046+/- .002] | 6.8 |
| 18 AWG | 1.17+/-0.05 [.046+/- .002] | 6.8 |
| 0.5mm2 FLR/FLU | 1.15+/-0.05 [.045+/- .002] | 6.9 |
| 0.50mm2 | 1.14+/-0.03 [.045+/- .001] | 6.9 |
| 0.50mm2 | 1.12+/-0.03 [.044+/- .001] | 7.1 |
| 20 AWG | 1.08+/-0.05 [.043+/- .002] | 7.3 |

- 1 RECOMMENDED SPARE PARTS
- 2 REFER TO SUPPLIED INSTRUCTION SHEET FOR CLEANING, LUBRICATION AND STORAGE OF APPLICATOR.
- 3 APPLY PART NUMBER 1-23419-5 LOCTITE TO THREADS OF ITEMS 180. APPLY PART NUMBER 2-23419-6 LOCTITE TO THREADS OF ITEM 242.
- 4 CRIMP HEIGHT REFERENCE SETTING WAS THE SETTING USED WHEN THE APPLICATOR WAS QUALIFIED AT THE FACTORY. ADJUSTMENT MAY BE NECESSARY WHEN RUNNING APPLICATOR IN THE FIELD.
- 5 APPLY TORO-SEAL IN ALLEN SOCKET TO FILL HOLE AFTER FLAT HD HAS BEEN ADJUSTED TO CORRECT HEIGHT AT QUALIFICATION. APPLY #1-23419-5 LOC-TITE TO THREADS.
- 6 TERMINAL LUBRICANT IS RECOMMENDED.
- 7. UNLESS SPECIFIED OTHERWISE TORQUE VALUES SHALL BE USED PER DOCUMENT, 101-35000.
- 8 WIRE TYPES AEX-F,AESSX-F,AVS.
- 9 WIRE TYPES AEX,CAVS.

***WARNING**
 ON INSTALLATION, SET WIRE DISC TO CRIMP HEIGHT REFERENCE SETTING FOR LARGEST WIRE SIZE. CRIMP HEIGHT REFERENCE SETTINGS GREATER THAN THE VALUE SHOWN MAY CAUSE DAMAGE TO THE CRIMP TOOLING, REFER TO THE INSTRUCTION SHEET FOR PROPER SETUP AND ADJUSTMENTS.

| LOC | DIST | REVISIONS | | | | | |
|-----|------|-----------|-----|---------------|-----------|-----|------|
| A | 66 | P | LTN | DESCRIPTION | DATE | OWN | APVD |
| | | G | | ECR-22-144042 | 28JUN2022 | TB | GB |
| | | G1 | | ECR-22-147642 | 28JUL2022 | FJ | YY |
| | | G2 | | ECR-22-158478 | 16NOV2022 | FZ | GB |
| | | G3 | | ECR-23-164843 | 30JAN2023 | FZ | GB |

| | | | | | | | | | |
|---|-----|-----|-----|-----|-----|-----|-------------|-------------------------------------|-----|
| - | - | - | 1 | 1 | - | - | 1803515-3 | RAM ASSEMBLY, SF ATLANTIC | 293 |
| - | - | - | 1 | 1 | - | - | 2-1803583-1 | APPLICATOR BASIC ASSEMBLY, SF | 292 |
| - | 1 | - | 1 | - | 1 | - | 2119641-1 | FEED CAM, AIR FEED | 248 |
| - | 1 | 1 | 1 | 1 | 1 | 1 | 2119082-9 | CAM, SNAIL, INSULATION ADJUSTMENT | 244 |
| - | 1 | 1 | 1 | 1 | 1 | 1 | 2079764-1 | WASHER, WAVE SPRING, CREST-TO-CREST | 243 |
| - | 1 | 1 | 1 | 1 | 1 | 1 | 2119083-1 | RETAINER, INSULATION DIAL | 242 |
| - | 1 | 1 | 1 | 1 | 1 | 1 | 7-18023-7 | SCR, SKT HD CAP M3 X 4.0 | 241 |
| - | - | 1 | - | 1 | - | 1 | 2119580-1 | MECHANICAL FEED ASSEMBLY | 239 |
| - | 1 | - | 1 | - | 1 | - | 2844940-1 | AIR FEED MODULE | 238 |
| - | - | - | 1 | 1 | - | - | 4-1722335-3 | STRIPPER, SIDE FEED | 182 |
| - | - | - | 1 | 1 | - | - | 1-5018030-0 | NUT, HEX, REG, RoHS, M3.5 | 181 |
| - | - | - | 1 | 1 | - | - | 1-1752354-7 | STANDOFF,HOLD-DOWN | 180 |
| - | - | - | 1 | 1 | - | - | 993111-1 | PIN, SLOTTED SPRING 3.0 X 20.0 | 177 |
| - | - | - | 1 | 1 | - | - | 5-22280-0 | SPRING, COMPRESSION | 176 |
| - | - | - | 1 | 1 | - | - | 1752353-3 | GUIDE PIN,HOLDDOWN | 175 |
| - | - | - | 1 | 1 | - | - | 1901680-2 | GUIDE PIN,HOLDDOWN | 174 |
| - | REF | REF | REF | REF | REF | REF | 994970-2 | COUNTER, MAGNETIC | 164 |
| - | 1 | 1 | 1 | 1 | 1 | 1 | 2119955-1 | ASSY, LUBRICATOR, SIDE FEED | 113 |
| - | 1 | 1 | 1 | 1 | 1 | 1 | 2844908-1 | SCREW, LOCKING | 99 |
| - | 1 | 1 | 1 | 1 | 1 | 1 | 2844907-1 | POST, LOCKING | 98 |
| - | 1 | 1 | 1 | 1 | 1 | 1 | 455888-5 | SPACER, CRIMPER | 82 |
| - | 1 | 1 | 1 | 1 | 1 | 1 | 1803607-3 | DOCUMENTATION PACKAGE | 71 |
| - | 1 | 1 | 1 | 1 | 1 | 1 | 2119740-1 | TAG, IDENTIFICATION | 67 |
| - | 2 | 2 | 2 | 2 | 2 | 2 | 2168078-1 | SCREW, DRIVE, RH, RoHS, 2 x .188 | 66 |
| - | 1 | 1 | 1 | 1 | 1 | 1 | 2168083-2 | SCR, SKT HD CAP, RoHS, M4 X 8.0 | 60 |
| - | 1 | 1 | 1 | 1 | 1 | 1 | 5-18022-5 | SCR, HEX HD CAP, M4 X 6.0 | 59 |
| - | 1 | 1 | 1 | 1 | 1 | 1 | 985575-3 | SCR, FLT SKT HD CAP M3 X 10.0 | 57 |
| - | 1 | 1 | 1 | 1 | 1 | 1 | 1338685-1 | PAWL, FEED | 56 |
| - | 4 | 4 | 4 | 4 | 4 | 4 | 2168083-3 | SCR, SKT HD CAP, RoHS, M4 X 12.0 | 54 |
| - | 2 | 2 | 2 | 2 | 2 | 2 | 2-2168083-5 | SCR, SKT HD CAP, RoHS, M4 X 14 | 53 |
| - | 1 | 1 | 1 | 1 | 1 | 1 | 1803382-2 | HOLD DOWN, SPRING LOADED | 50 |
| - | 1 | 2 | 1 | 2 | 1 | 2 | 18023-9 | SCR, SKT HD CAP M4 X 6.0 | 49 |
| - | - | 1 | - | 1 | - | 1 | 2119652-1 | FEED CAM, PRE FEED | 48 |
| - | - | 1 | - | 1 | - | 1 | 2119653-1 | FEED CAM, POST FEED | 47 |
| - | 1 | 1 | - | - | 1 | 1 | 1803583-9 | APPLICATOR BASIC ASSEMBLY, SF | 46 |
| - | 1 | 1 | - | - | 1 | 1 | 1803515-1 | RAM ASSEMBLY, SF ATLANTIC | 44 |
| - | 1 | 1 | 1 | 1 | 1 | 1 | 1803602-1 | SCR, BHSC, RoHS (M8 X 25) | 41 |
| - | 1 | 1 | 1 | 1 | 1 | 1 | 1752356-4 | SUPPORT, TERMINAL | 34 |
| - | 2 | 2 | 2 | 2 | 2 | 2 | 2079383-5 | SCR, BHSC, RoHS (M4 X 20) | 33 |
| - | 2 | 2 | 2 | 2 | 2 | 2 | 3-2844962-0 | SPACER, CYLINDRICAL, STRIP GUIDE | 30 |
| - | 1 | 1 | 1 | 1 | 1 | 1 | 2844992-2 | ASSEMBLY, STRIP GUIDE | 29 |
| - | 1 | 1 | 1 | 1 | 1 | 1 | 455888-3 | SPACER, CRIMPER | 28 |
| - | 1 | 1 | 1 | 1 | 1 | 1 | 1320928-2 | STRIP GUIDE | 24 |
| - | 1 | 1 | - | - | 1 | 1 | 2168083-2 | SCR, SKT HD CAP, RoHS, M4 X 8.0 | 21 |
| - | 2 | 2 | 1 | 1 | 2 | 2 | 1-18028-2 | WASHER, FLAT, REG M4 | 20 |
| - | 1 | 1 | - | - | 1 | 1 | 2119533-1 | STRIPPER, SIDE FEED | 19 |
| - | 1 | 1 | 1 | 1 | 1 | 1 | 2119806-1 | INSERT, SHEAR | 13 |
| - | 1 | 1 | 1 | 1 | 1 | 1 | 3-22280-3 | SPRING, COMPRESSION | 12 |
| - | 1 | 1 | 1 | 1 | 1 | 1 | 1-356885-4 | STOP, SHEAR | 11 |
| - | 1 | 1 | 1 | 1 | 1 | 1 | 2119805-1 | SHEAR HOLDER, FRONT | 10 |
| - | 1 | 1 | 1 | 1 | 1 | 1 | 318707-1 | FLOATING SHEAR, FRONT | 9 |
| 1 | 2 | 2 | 1 | 1 | 1 | 1 | 1333204-1 | ANVIL, COMBINATION | 8 |
| - | 1 | 1 | 1 | 1 | 1 | 1 | 2-240641-9 | SPACER | 7 |
| - | - | - | - | - | - | - | - | - | 6 |
| - | 1 | 1 | 1 | 1 | 1 | 1 | 2119781-1 | DEPRESSOR, SHEAR | 5 |
| - | 1 | 1 | 1 | 1 | 1 | 1 | 238011-9 | BLOCK, CRIMPER SPACER | 4 |
| 1 | 2 | 2 | 1 | 1 | 1 | 1 | 3-2119784-1 | CRIMPER, INSULATION O PREMIUM | 3 |
| - | 1 | 1 | 1 | 1 | 1 | 1 | 1-455888-0 | SPACER, CRIMPER | 2 |
| 1 | 2 | 2 | 1 | 1 | 1 | 1 | 1-456405-6 | CRIMPER, WIRE PREMIUM | 1 |

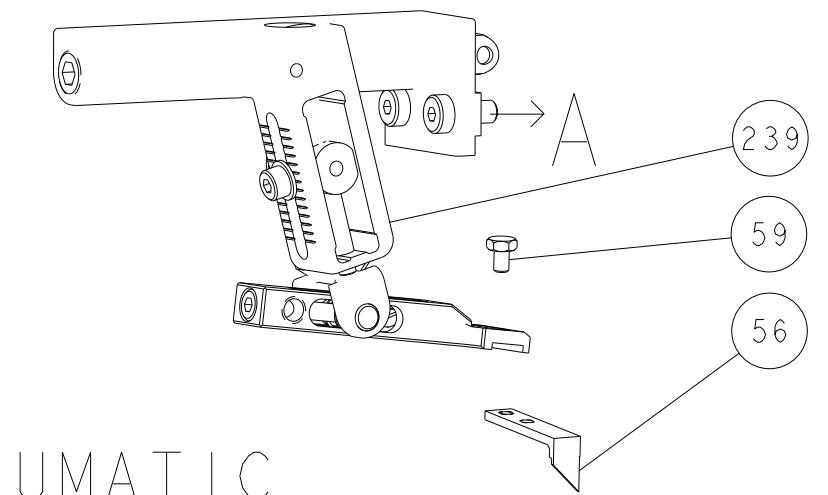
ATLANTIC VERSION
 Shown on sheets 1 of 4 & 2 of 4
 (Pacific version shown on sheets 3 of 4 & 4 of 4)

| ITEM NO | PART NO | DESCRIPTION |
|---------|---------|-------------|
| -77 | -72 | -71 |
| -52 | -51 | -2 |
| -1 | | |

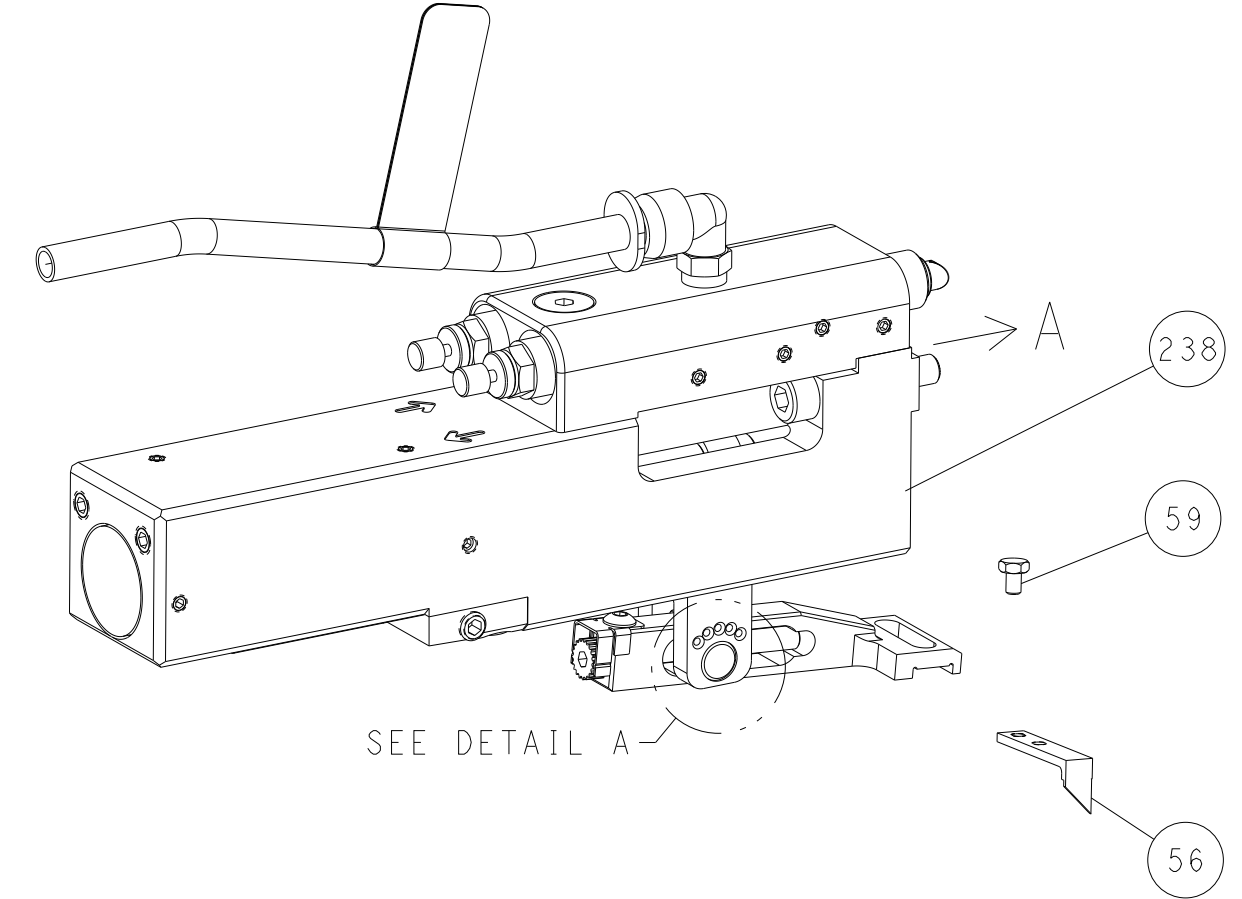
| | | |
|---------------|--|--------------|
| OWN | Y. YIN | 30NOV2011 |
| CHK | G. BAILEY | 30NOV2011 |
| APVD | S. XI | 30NOV2011 |
| NAME | Ocean Side Feed Applicator | |
| SIZE | CAGE CODE | DRAWING NO |
| A1 | 00779 | 2151227 |
| RESTRICTED TO | Customer Accessible Production Drawing | |
| SCALE | 1:2 | SHEET 1 OF 4 |
| REV | G3 | |

| LOC | DIST | REVISIONS | | | | | |
|-----|------|-----------|-----|-------------|------|-----|------|
| | | P | LTN | DESCRIPTION | DATE | OWN | APVD |
| A | 66 | - | - | SEE SHEET 1 | - | - | - |

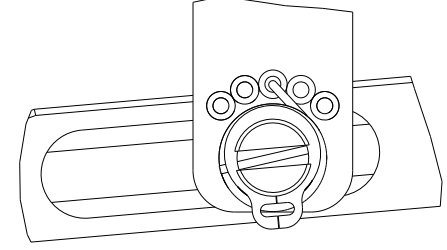
FEED TYPE MECHANICAL



PNEUMATIC

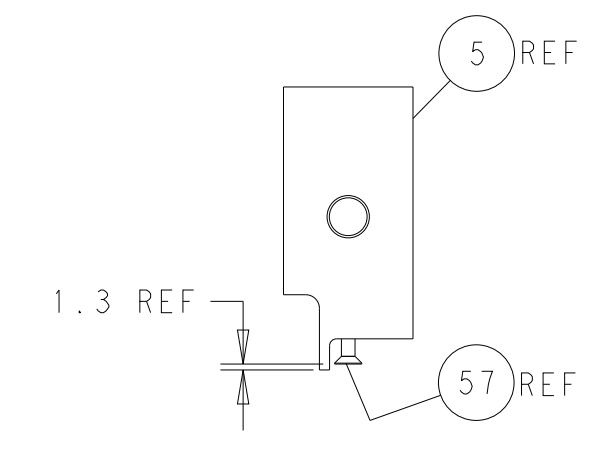
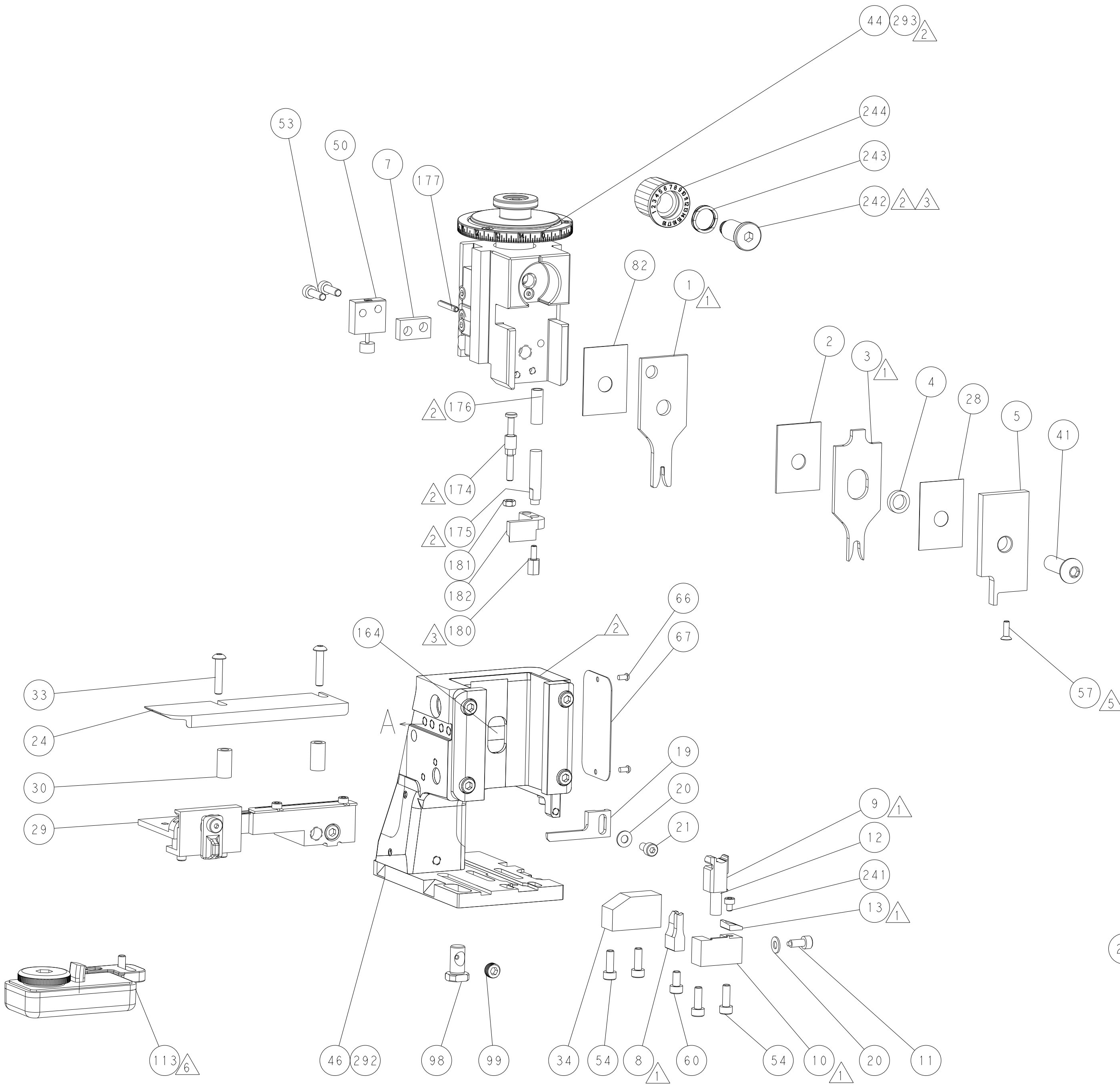
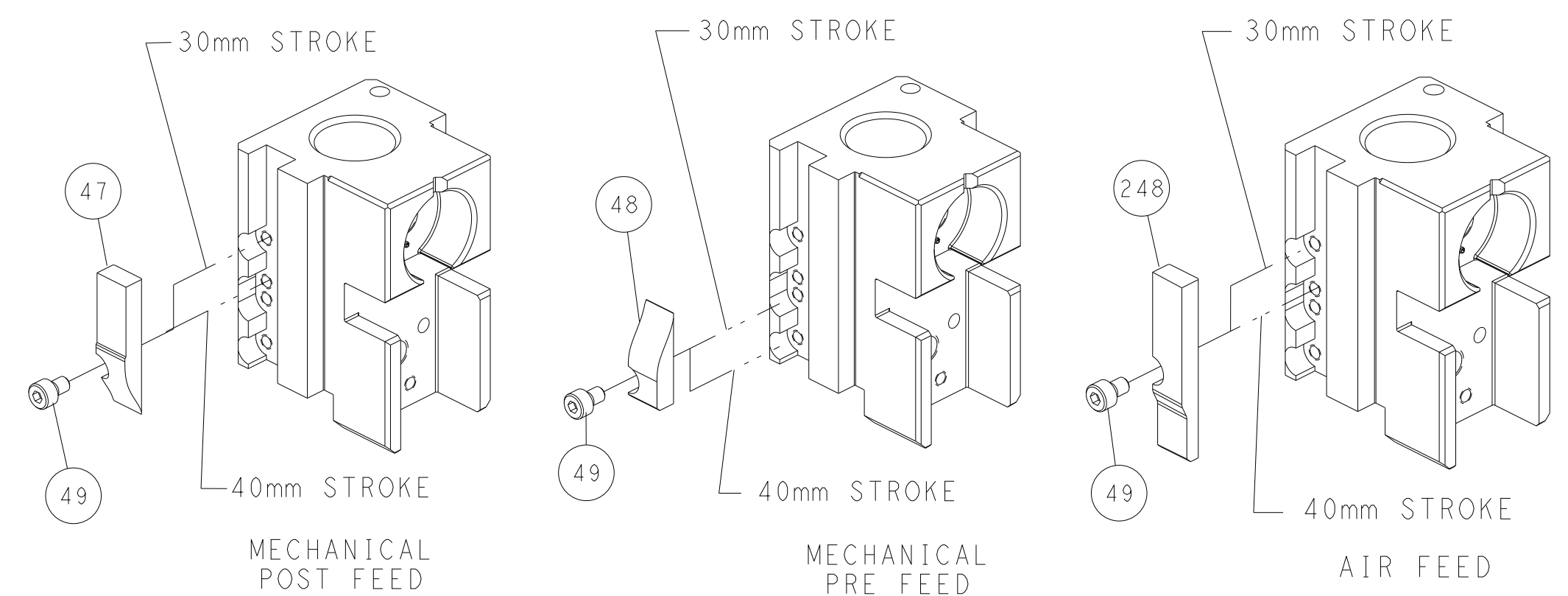


FEED SPRING SETTING POSITION (SHOWN FROM REAR SIDE)

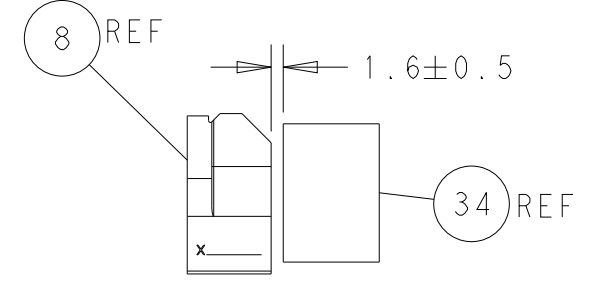


DETAIL A

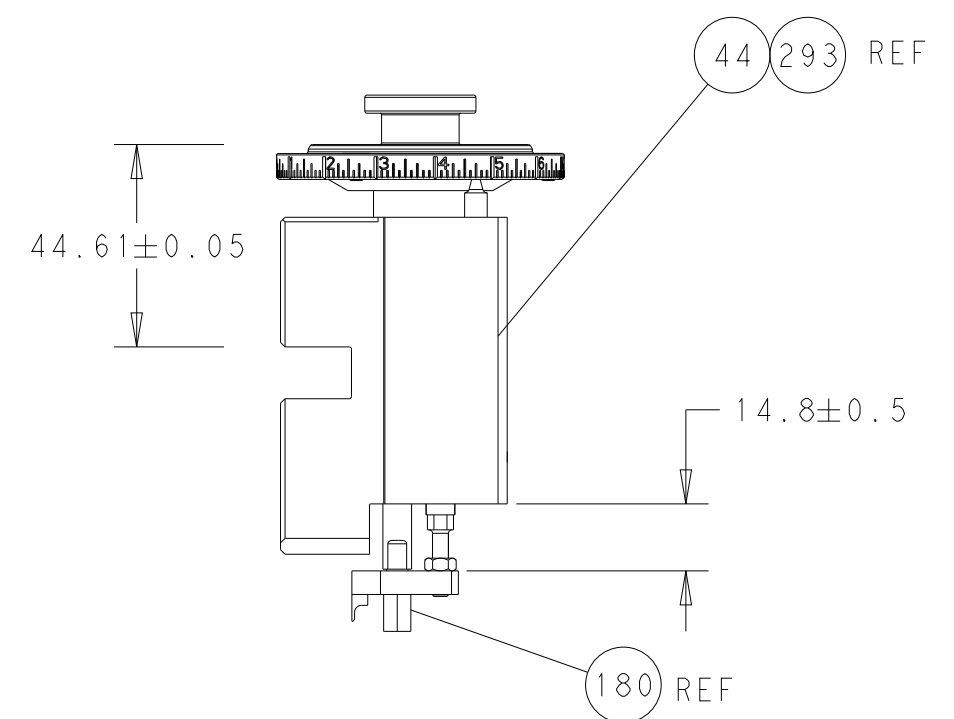
CAM POSITIONS



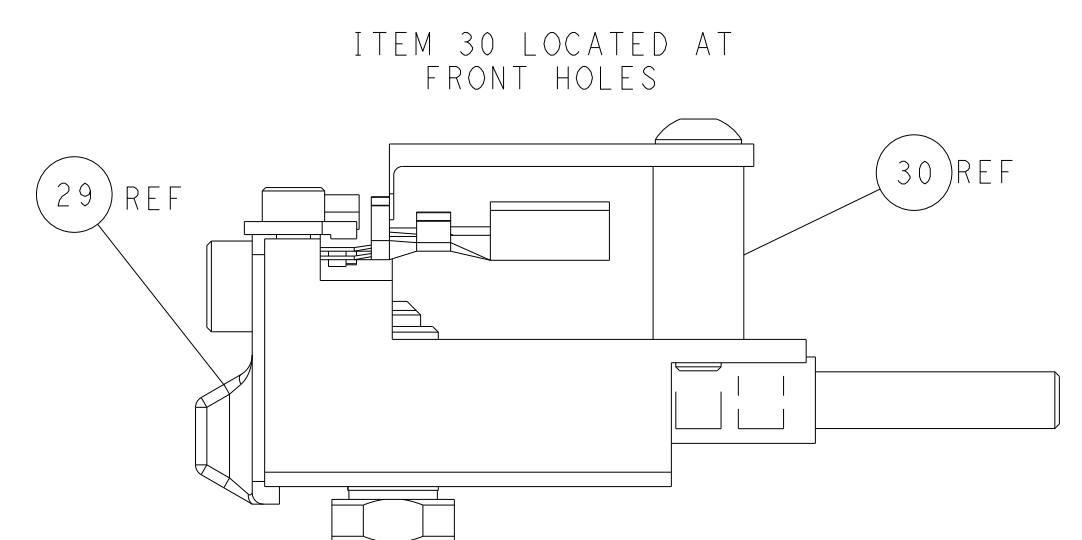
SHEAR DEPRESSOR DETAIL



TERMINAL SUPPORT LOCATION



RAM AND HOLDDOWN SET-UP



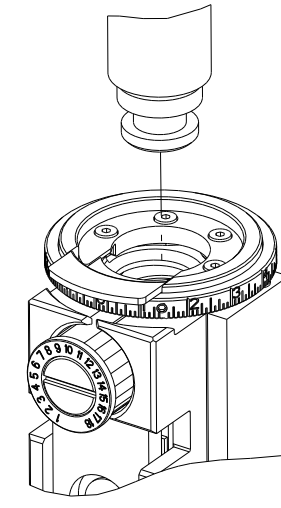
FEED TRACK POSITION GUIDE BY INSULATION BARREL

ATLANTIC VERSION
 Shown on sheets 1 of 4 & 2 of 4
 (Pacific version shown on sheets 3 of 4 & 4 of 4)

| | | | | | | | |
|-----------------------|--|---|--|---|--|--|--|
| DIMENSIONS: mm | | TOLERANCES UNLESS OTHERWISE SPECIFIED: 0 PLC ± 1 PLC ± 2 PLC ± 3 PLC ± 4 PLC ± ANGLES ± FINISH | | DWN Y. YIN 30NOV2011 CHK G. BAILEY 30NOV2011 APVD S. XI 30NOV2011 PRODUCT SPEC APPLICATION SPEC WEIGHT Customer Accessible Production Drawing | | NAME Ocean Side Feed Applicator SIZE CAGE CODE DRAWING NO. RESTRICTED TO A1 00779 C=2151227 SCALE 1:2 SHEET 2 OF 4 REV G3 | |
|-----------------------|--|---|--|---|--|--|--|

| PART NUMBER | REVISION | DESCRIPTION | FEED TYPE |
|-------------|----------|--------------------------|------------|
| 2-2151227-1 | G | FINE CRIMP HEIGHT ADJUST | MECHANICAL |
| 2-2151227-2 | G | FINE CRIMP HEIGHT ADJUST | PNEUMATIC |
| 7-2151227-7 | A | CRIMP TOOLING KIT | - |

PACIFIC VERSION TERMINATOR
INTERFACE ADAPTER



| APPLICATOR DATA | | |
|--------------------------------------|----------------|------|
| CRIMP | SIZE | TYPE |
| WIRE | 2.03 mm [.080] | F |
| INSUL | 4.06 mm [.160] | O |
| APPLICATOR INSTRUCTIONS 408-35042 | | |

| TERMINAL DATA: TE TERMINAL | | TE CRIMP SPECIFICATION | |
|--|----------------|------------------------------|----------|
| TERMINAL NAME: 2.8MM SENSOR - FLAT TYPE RECEPTACLE | | | |
| WIRE STRIP LENGTH | | INSULATION DIAMETER RANGE | |
| 4.20-4.80 mm [.165-.189 IN] | | Ø1.40-2.10 mm [.055-.083 IN] | |
| TERMINAL APPLICATION SPECIFICATION | (B)114-18144-1 | - | - |
| TERMINALS APPLIED | | | |
| TE TERMINAL | TE TERMINAL | TE SEAL | TE SEAL |
| (B) 968087-1 | (B) 968087-2 | 1572276-1 | 828904-1 |
| (B) 1703034-1 | (B) 1703034-2 | | |

| TERMINAL DATA: TE TERMINAL | | TE CRIMP SPECIFICATION | |
|--|----------------|------------------------------|----------|
| TERMINAL NAME: 2.8MM SENSOR - FLAT TYPE RECEPTACLE | | | |
| WIRE STRIP LENGTH | | INSULATION DIAMETER RANGE | |
| 4.20-4.80 mm [.165-.189 IN] | | Ø1.30-2.10 mm [.051-.083 IN] | |
| TERMINAL APPLICATION SPECIFICATION | (A)114-18144-0 | - | - |
| TERMINALS APPLIED | | | |
| TE TERMINAL | TE TERMINAL | TE SEAL | TE SEAL |
| (A) 967542-1 | (A) 967542-2 | 1572276-1 | 828904-1 |

| TERMINAL DATA: TE TERMINAL | | TE CRIMP SPECIFICATION | |
|--|----------------|------------------------------|----------|
| TERMINAL NAME: 2.8MM SENSOR - FLAT TYPE RECEPTACLE | | | |
| WIRE STRIP LENGTH | | INSULATION DIAMETER RANGE | |
| 4.20-4.80 mm [.165-.189 IN] | | Ø1.30-2.10 mm [.051-.083 IN] | |
| TERMINAL APPLICATION SPECIFICATION | (C)114-18148 | - | - |
| TERMINALS APPLIED | | | |
| TE TERMINAL | TE TERMINAL | TE SEAL | TE SEAL |
| (C) 1-968855-1 | (C) 1-968855-2 | 1572276-1 | 828904-1 |
| (C) 1-968855-3 | (C) 1-968855-4 | | |

| WIRE SIZE | CRIMP HEIGHT mm [INCH] | CRIMP HEIGHT REFERENCE SETTING |
|-----------|-------------------------------|--------------------------------|
| 1.00mm2 | 1.36 +/- 0.05 [.054 +/- .002] | 4.6 |
| 0.75mm2 | 1.27 +/- 0.05 [.050 +/- .002] | 5.5 |
| 0.50mm2 | 1.18 +/- 0.05 [.046 +/- .002] | 6.5 |

| WIRE SIZE | CRIMP HEIGHT mm [INCH] | CRIMP HEIGHT REFERENCE SETTING |
|-----------|-------------------------------|--------------------------------|
| 1.00mm2 | 1.20 +/- 0.05 [.047 +/- .002] | 6.3 |
| 0.75mm2 | 1.18 +/- 0.05 [.046 +/- .002] | 6.5 |
| 0.50mm2 | 1.15 +/- 0.05 [.045 +/- .002] | 6.8 |

| WIRE SIZE | CRIMP HEIGHT mm [INCH] | CRIMP HEIGHT REFERENCE SETTING |
|-----------------|-------------------------------|--------------------------------|
| 1.00mm2 FLR/FLU | 1.20 +/- 0.05 [.047 +/- .002] | 6.5 |
| 0.85mm2 CAVS | 1.26 +/- 0.05 [.050 +/- .002] | 5.8 |
| 0.85mm2 AVS | 1.24 +/- 0.03 [.049 +/- .001] | 6.0 |
| 0.75mm2 AESSX-F | 1.23 +/- 0.05 [.048 +/- .002] | 6.2 |
| 0.75mm2 FLR/FLU | 1.18 +/- 0.05 [.046 +/- .002] | 6.8 |
| 18 AWG | 1.17 +/- 0.05 [.046 +/- .002] | 6.8 |
| 0.5mm2 FLR/FLU | 1.15 +/- 0.05 [.045 +/- .002] | 6.9 |
| 0.50mm2 | 1.14 +/- 0.03 [.045 +/- .001] | 6.9 |
| 0.50mm2 | 1.12 +/- 0.03 [.044 +/- .001] | 7.1 |
| 20 AWG | 1.08 +/- 0.05 [.043 +/- .002] | 7.3 |

- RECOMMENDED SPARE PARTS
- REFER TO SUPPLIED INSTRUCTION SHEET FOR CLEANING, LUBRICATION AND STORAGE OF APPLICATOR.
- APPLY PART NUMBER 2-23419-6 LOCTITE TO THREADS OF ITEM 242.
- CRIMP HEIGHT REFERENCE SETTING WAS THE SETTING USED WHEN THE APPLICATOR WAS QUALIFIED AT THE FACTORY. ADJUSTMENT MAY BE NECESSARY WHEN RUNNING APPLICATOR IN THE FIELD.
- APPLY TORQ-SEAL IN ALLEN SOCKET TO FILL HOLE AFTER FLAT HD HAS BEEN ADJUSTED TO CORRECT HEIGHT AT QUALIFICATION. APPLY #1-23419-5 LOC-TITE TO THREADS.
- TERMINAL LUBRICANT IS RECOMMENDED.
- 7. UNLESS SPECIFIED OTHERWISE TORQUE VALUES SHALL BE USED PER DOCUMENT, 101-35000.
- WIRE TYPES AEX-F, AESSX-F, AVS.
- WIRE TYPES AEX, CAVS.

***WARNING**
ON INSTALLATION, SET WIRE DISC TO CRIMP HEIGHT REFERENCE SETTING FOR LARGEST WIRE SIZE. CRIMP HEIGHT REFERENCE SETTINGS GREATER THAN THE VALUE SHOWN MAY CAUSE DAMAGE TO THE CRIMP TOOLING, REFER TO THE INSTRUCTION SHEET FOR PROPER SETUP AND ADJUSTMENTS.

| ENTRY LEVEL APPLICATOR | | ITEM SUBSTITUTION LIST | | |
|------------------------|-------------|------------------------|---------------------|------------------------|
| PART NUMBER | SAME AS | ITEM | ITEM DESCRIPTION | SUBSTITUTE PART NUMBER |
| 8-2151227-1 | 2151227-1 | 1 | WIRE CRIMPER | 1-1803590-6 |
| 8-2151227-2 | 2151227-2 | 3 | INSULATION CRIMPER | 3-1803604-1 |
| 9-2151227-1 | 2-2151227-1 | 46 | BASIC SUB -ASSEMBLY | 1803940-9 |
| 9-2151227-2 | 2-2151227-2 | 141 | BASIC SUB -ASSEMBLY | 1-1803940-0 |
| | | | LUBRICATOR | DELETE |

PACIFIC VERSION
Shown on sheets 3 of 4 & 4 of 4
(Atlantic version shown on sheets 1 of 4 & 2 of 4)

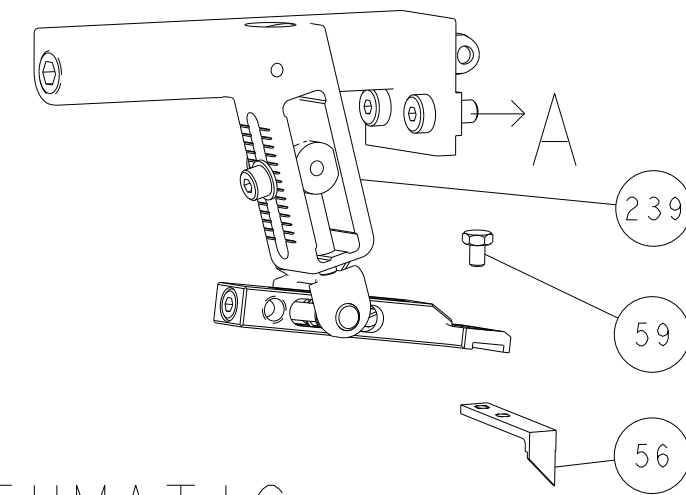
| LOC | DIST | REVISIONS | | | | | |
|-----|------|-----------|-----|-------------|------|-----|------|
| A | 66 | P | LTN | DESCRIPTION | DATE | OWN | APVD |
| - | - | - | - | SEE SHEET 1 | - | - | - |

| | | | | | |
|---|-----|-----|-------------|-------------------------------------|-----|
| - | 1 | 1 | 2119082-9 | CAM, SNAIL, INSULATION ADJUSTMENT | 244 |
| - | 1 | 1 | 2079764-1 | WASHER, WAVE SPRING, CREST-TO-CREST | 243 |
| - | 1 | 1 | 2119083-1 | RETAINER, INSULATION DIAL | 242 |
| - | 1 | 1 | 7-18023-7 | SCR, SKT HD CAP M3 X 4.0 | 241 |
| - | - | 1 | 2119580-1 | MECHANICAL FEED ASSEMBLY | 239 |
| - | 1 | - | 2844940-1 | AIR FEED MODULE | 238 |
| - | REF | REF | 994970-2 | COUNTER, MAGNETIC | 164 |
| - | 1 | - | 2119641-2 | FEED CAM, AIR FEED | 151 |
| - | 1 | 1 | 2168083-8 | SCR, SKT HD CAP, RoHS, M4 X 16 | 144 |
| - | 4 | 4 | 2168083-9 | SCR, SKT HD CAP, RoHS, M4 X 20 | 143 |
| - | - | 1 | 2119653-2 | FEED CAM, POST FEED | 142 |
| - | 1 | 1 | 1-1803583-0 | APPLICATOR BASIC ASSEMBLY, SF | 141 |
| - | 1 | 1 | 1803516-1 | RAM ASSEMBLY, SF PACIFIC | 140 |
| - | 1 | 1 | 2119955-1 | ASSY, LUBRICATOR, SIDE FEED | 113 |
| - | 1 | 1 | 2844908-1 | SCREW, LOCKING | 99 |
| - | 1 | 1 | 2844907-1 | POST, LOCKING | 98 |
| - | 1 | 1 | 455888-5 | SPACER, CRIMPER | 82 |
| - | 1 | 1 | 1803607-3 | DOCUMENTATION PACKAGE | 71 |
| - | 1 | 1 | 2119740-1 | TAG, IDENTIFICATION | 67 |
| - | 2 | 2 | 2168078-1 | SCREW, DRIVE, RH, RoHS, 2 x .188 | 66 |
| - | 1 | 1 | 5-18022-5 | SCR, HEX HD CAP, M4 X 6.0 | 59 |
| - | 1 | 1 | 985575-3 | SCR, FLT SKT HD CAP M3 X 10.0 | 57 |
| - | 1 | 1 | 1338685-1 | PAWL, FEED | 56 |
| - | 2 | 2 | 2-2168083-5 | SCR, SKT HD CAP, RoHS, M4 X 14 | 53 |
| - | 1 | 1 | 1803382-2 | HOLD DOWN, SPRING LOADED | 50 |
| - | 1 | 2 | 18023-9 | SCR, SKT HD CAP M4 X 6.0 | 49 |
| - | - | 1 | 2119652-1 | FEED CAM, PRE FEED | 48 |
| - | 1 | 1 | 1803602-1 | SCR, BHSC, RoHS (M8 X 25) | 41 |
| - | 1 | 1 | 1752356-4 | SUPPORT, TERMINAL | 34 |
| - | 2 | 2 | 2079383-5 | SCR, BHSC, RoHS (M4 X 20) | 33 |
| - | 2 | 2 | 3-2844962-0 | SPACER, CYLINDRICAL, STRIP GUIDE | 30 |
| - | 1 | 1 | 2844992-2 | ASSEMBLY, STRIP GUIDE | 29 |
| - | 1 | 1 | 455888-3 | SPACER, CRIMPER | 28 |
| - | 1 | 1 | 1320928-2 | STRIP GUIDE | 24 |
| - | 1 | 1 | 2168083-2 | SCR, SKT HD CAP, RoHS, M4 X 8.0 | 21 |
| - | 2 | 2 | 1-18028-2 | WASHER, FLAT, REG M4 | 20 |
| - | 1 | 1 | 2119533-1 | STRIPPER, SIDE FEED | 19 |
| - | 1 | 1 | 2119806-1 | INSERT, SHEAR | 13 |
| - | 1 | 1 | 3-22280-3 | SPRING, COMPRESSION | 12 |
| - | 1 | 1 | 1-356885-4 | STOP, SHEAR | 11 |
| - | 1 | 1 | 2119805-1 | SHEAR HOLDER, FRONT | 10 |
| - | 1 | 1 | 318707-1 | FLOATING SHEAR, FRONT | 9 |
| - | 1 | 1 | 1333204-1 | ANVIL, COMBINATION | 8 |
| - | 1 | 1 | 2-240641-9 | SPACER | 7 |
| - | - | - | - | - | 6 |
| - | 1 | 1 | 2119781-1 | DEPRESSOR, SHEAR | 5 |
| - | 1 | 1 | 238011-9 | BLOCK, CRIMPER SPACER | 4 |
| - | 1 | 1 | 3-2119784-1 | CRIMPER, INSULATION O PREMIUM | 3 |
| - | 1 | 1 | 1-455888-0 | SPACER, CRIMPER | 2 |
| - | 1 | 1 | 1-456405-6 | CRIMPER, WIRE PREMIUM | 1 |

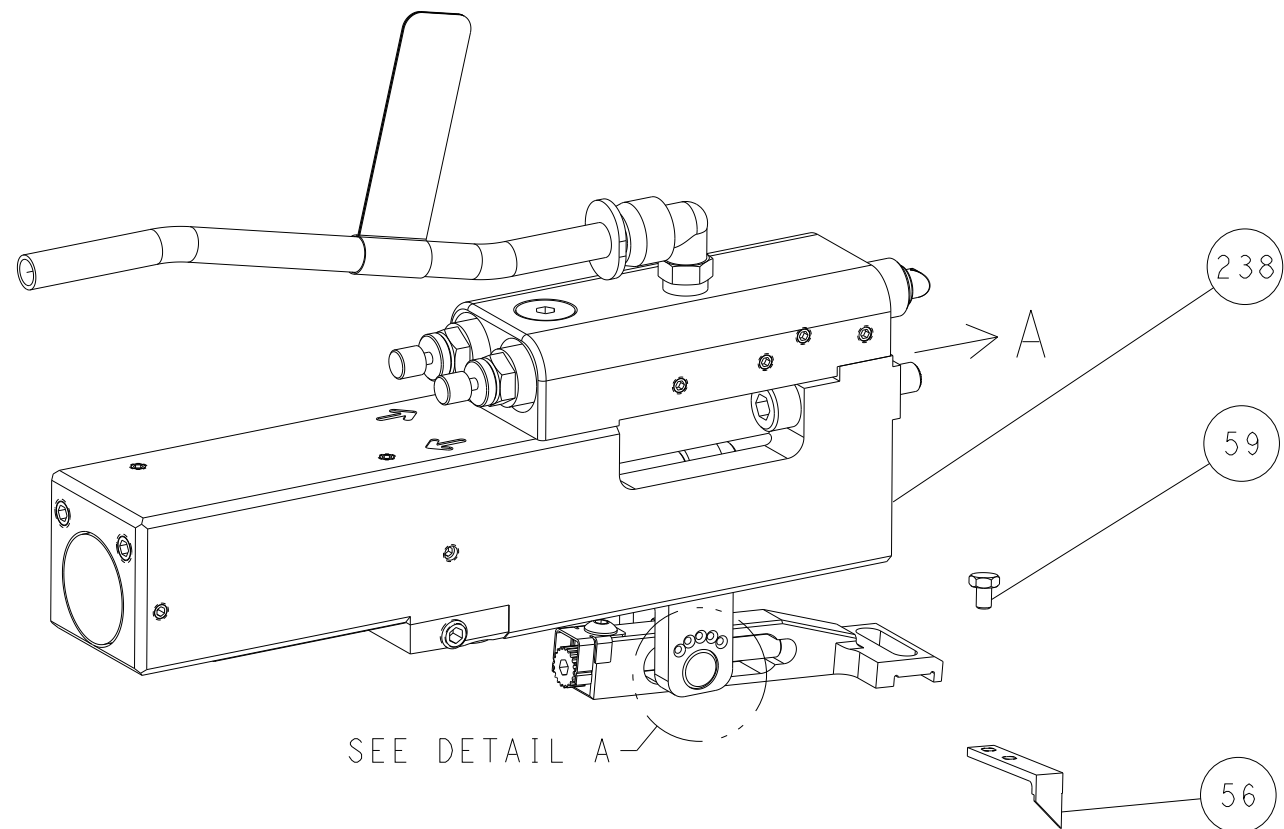
| DIMENSIONS: | | TOLERANCES UNLESS OTHERWISE SPECIFIED: | | DRAWN | | CHK | | NAME | |
|-------------|---------|--|---------|--|--------------|-----------|------------|---------------|-----------|
| mm | 0 PLC ± | 1 PLC ± | 2 PLC ± | 3 PLC ± | 4 PLC ± | S. XI | 30NOV2011 | G. BAILEY | 30NOV2011 |
| | | | | APVD | PRODUCT SPEC | | | | |
| | | | | APPLICATION SPEC | | | | | |
| | | | | WEIGHT | SIZE | CAGE CODE | DRAWING NO | RESTRICTED TO | |
| | | | | MATERIAL | A1 | 00779 | ©=2151227 | | |
| | | | | Customer Accessible Production Drawing | | SCALE | 1:2 | SHEET | 3 of 4 |
| | | | | | | REV | G3 | | |

| LOC | DIST | REVISIONS | | | | | |
|-----|------|-----------|-----|-------------|------|-----|------|
| | | P | LTN | DESCRIPTION | DATE | DWN | APVD |
| A | 66 | - | - | SEE SHEET 1 | - | - | - |

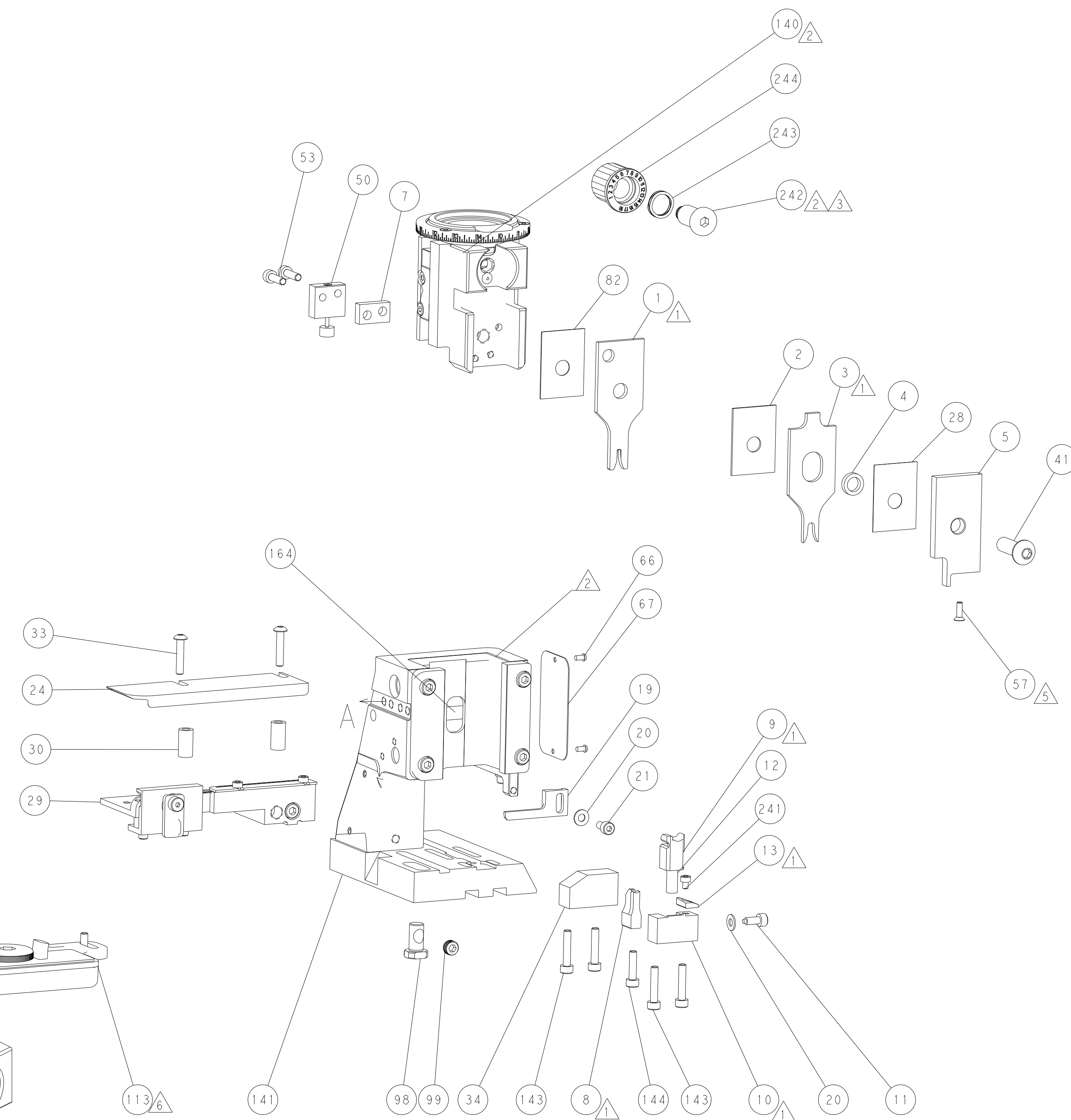
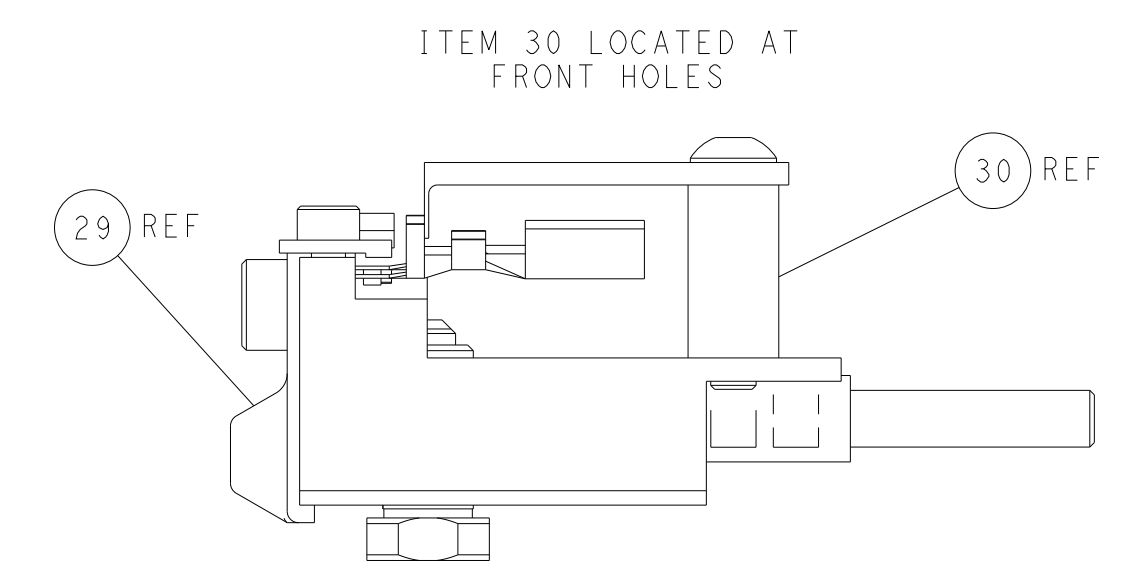
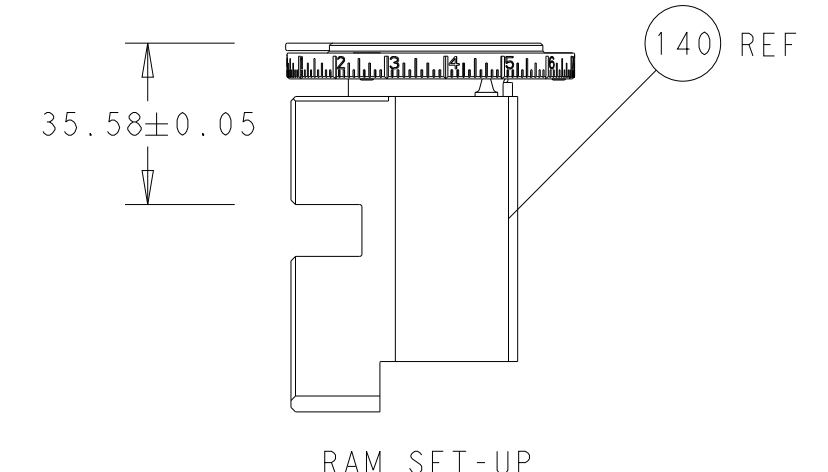
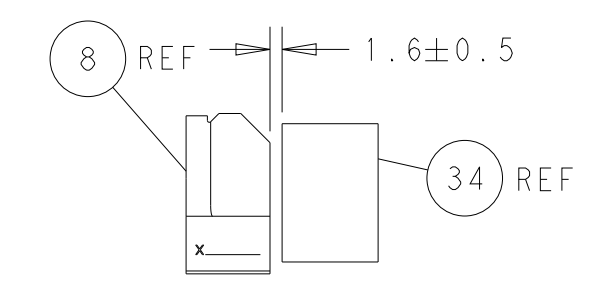
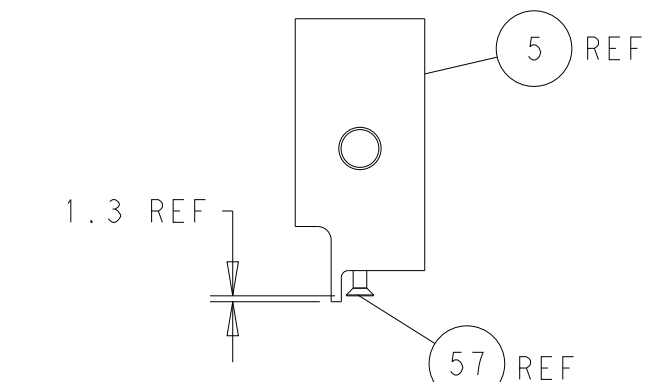
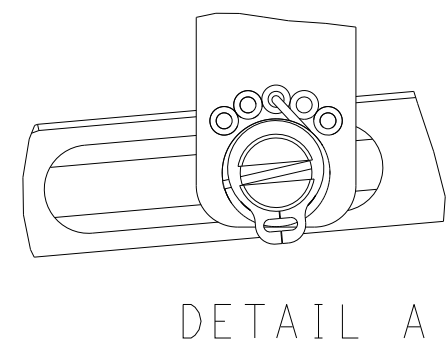
FEED TYPE MECHANICAL



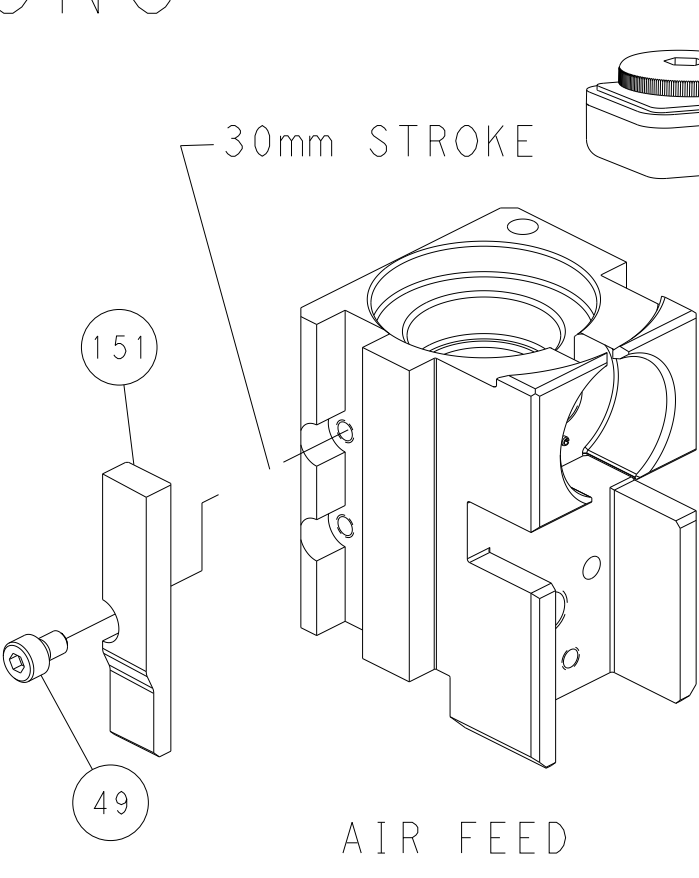
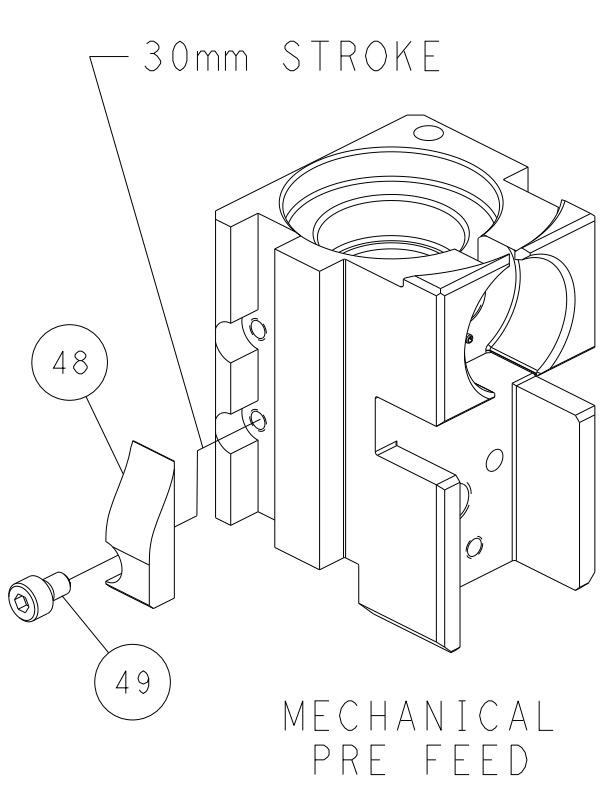
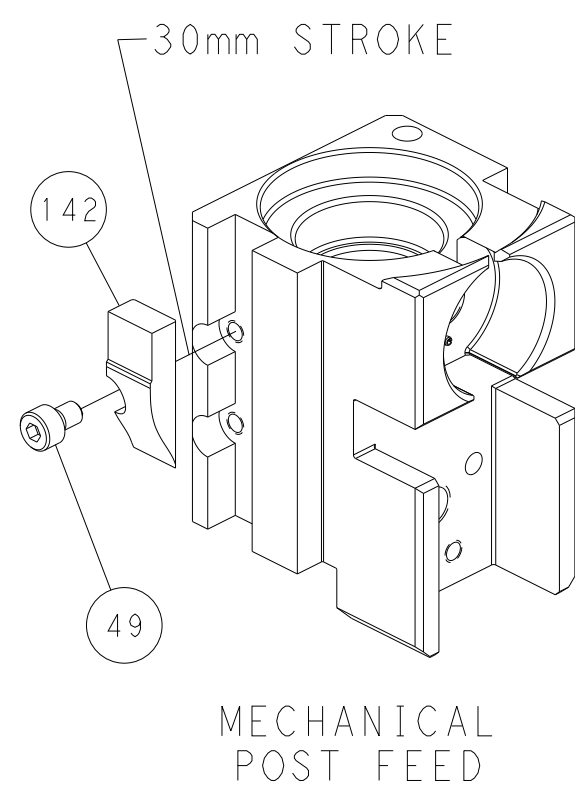
PNEUMATIC



FEED SPRING SETTING POSITION (SHOWN FROM REAR SIDE)



CAM POSITIONS



PACIFIC VERSION
 Shown on sheets 3 of 4 & 4 of 4
 (Atlantic version shown on sheets 1 of 4 & 2 of 4)

| | | | |
|--|---|---|--|
| <small>THIS DRAWING IS A CONTROLLED DOCUMENT FOR TYCO ELECTRONICS CORPORATION. IT IS THE PROPERTY OF COMPANY AND IS NOT TO BE REPRODUCED OR TRANSMITTED IN ANY FORM OR BY ANY MEANS, ELECTRONIC OR MECHANICAL, WITHOUT THE WRITTEN PERMISSION OF TYCO ELECTRONICS CORPORATION.</small> | | DWN Y. YIN 30NOV2011 CHK G. BAILEY 30NOV2011 APVD S. XI 30NOV2011 | TE Connectivity Harrisburg, PA 17105-3608 |
| DIMENSIONS: mm | TOLERANCES UNLESS OTHERWISE SPECIFIED: 0 PLC ± 1 PLC ± 2 PLC ± 3 PLC ± 4 PLC ± ANGLES ± FINISH | NAME Ocean Side Feed Applicator | RESTRICTED TO |
| MATERIAL | WEIGHT | SIZE CAGE CODE DRAWING NO A1 00779 C-2151227 | SCALE 1:2 SHEET 4 OF 4 REV G3 |
| Customer Accessible Production Drawing | | Customer Accessible Production Drawing | |