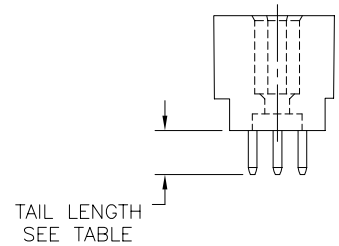
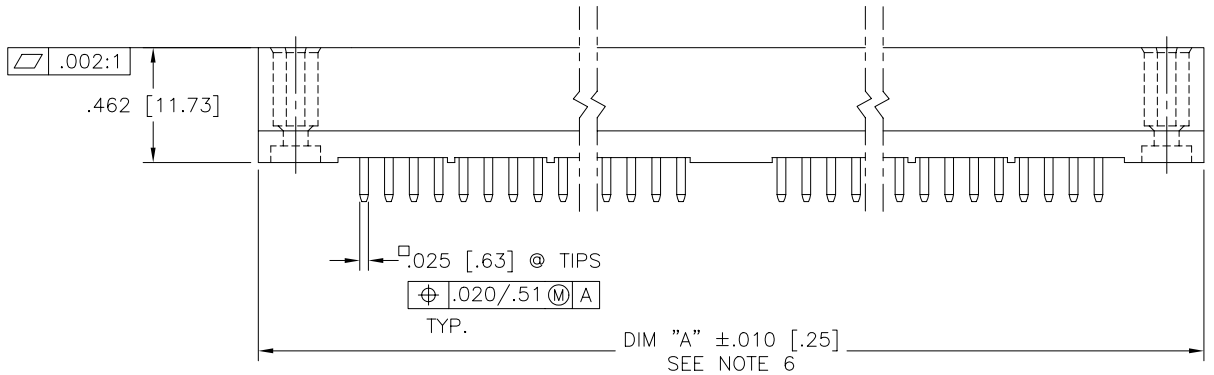
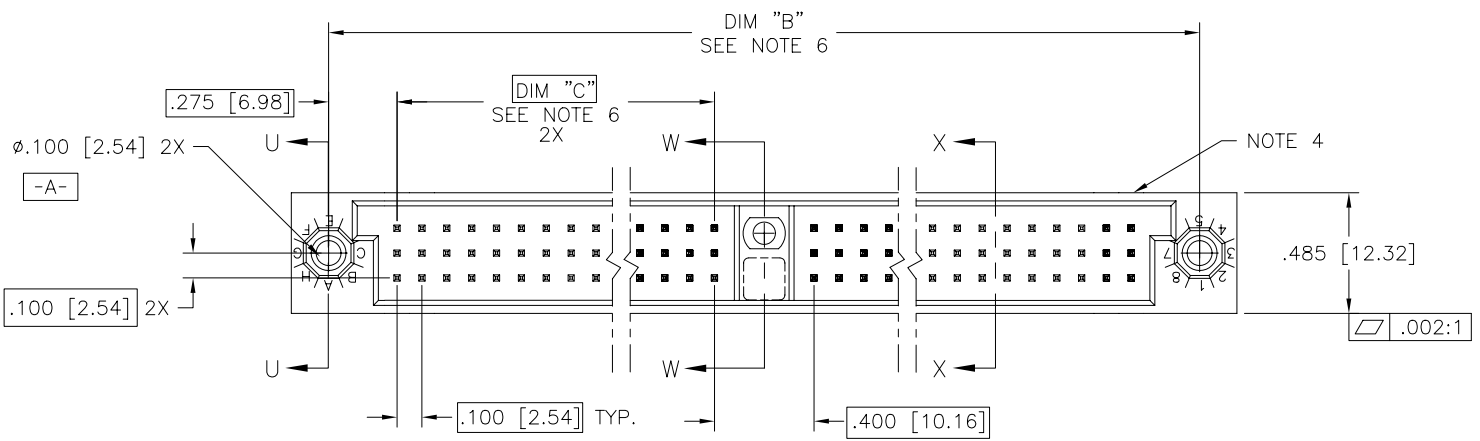


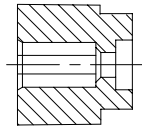
PRODUCT NUMBER
SEE TABLE



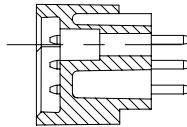
mat'l. code SEE NOTE 3		surface ISO 1302 ✓		tolerance ISO 406 ISO 1101		projection ⊕		product family HPC	
ltr	ecm no	dr	date	tolerances unless otherwise specified		INCH/MM		title	
G	v40286	PDP	1/20/94	angles	linear	.xx ±.01/.3		3 ROW VERTICAL HEADER	
H	v40940	PDP	6/01/94			.xxx ±.005/.13		W/SOLDER TAIL PINS 1 G.P.	
J	v90017	HTB	1/07/99	σ±2'		.xxxx ±.0020/.051		dwg no	
K	v00272	JWS	2/01/00	dr	D. SHEAFFER	3/14/91		sheet 1 of 3 size	
L	v05-0759	DAI	10/05/05	engr	S. CLARK	3/14/91		50013	
M	v05-1039	DAI	11/15/05	chr	S. CLARK	3/14/91		A3	
N	M06-0255	MNR	7/06/06	appd	S. CLARK	3/14/91		type Product Customer Drawing	
sheet	revision	N	N	N					
index	sheet	1	2	3					

PRODUCT NUMBER

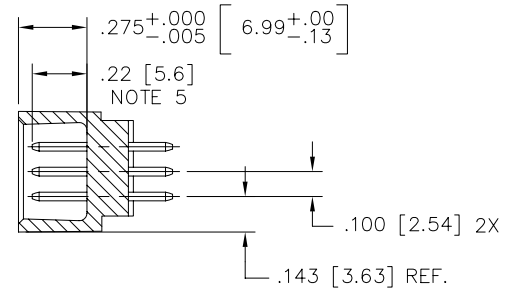
SEE TABLE



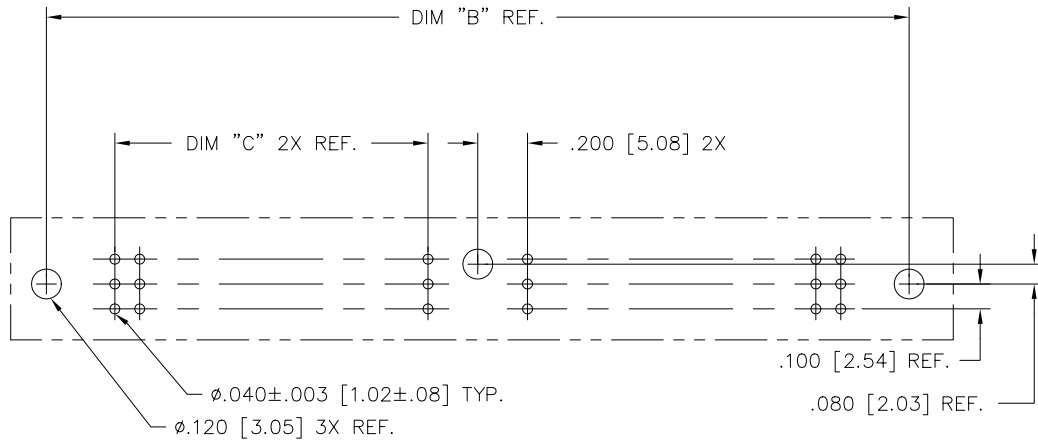
SECTION U-U



SECTION W-W



SECTION X-X



RECOMMENDED PCB LAYOUT
(ALL HOLES LOCATED ON .100/2.54 GRID
UNLESS OTHERWISE SPECIFIED)

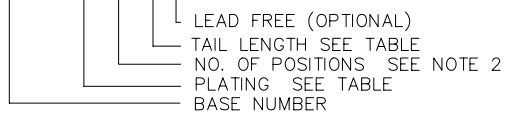
mat'l. code SEE NOTE 3		surface ISO 1302 ✓	tolerance ISO 406 ISO 1101	projection INCH/MM	product family HPC
ltr	ecn	no	dr	date	tolerances unless otherwise specified
N					angles linear .xx ±.01/.3 .xxx ±.005/.13 σ±2' .xxxx ±.0020/.051
					scale 1:1
			dr	D. SHEAFFER	3/14/91
			enr	S. CLARK	3/14/91
			chr	S. CLARK	3/14/91
			appd	S. CLARK	3/14/91
sheet	revision				
index	sheet				
				title 3 ROW VERTICAL HEADER W/SOLDER TAIL PINS 1 G.P.	
				dwg no 50013	
				sheet 2 of 3 size A3	
				type Product Customer Drawing	

PRODUCT NUMBER SEE NOTE 7	NO. OF POSITIONS SEE NOTE 2	TAIL LENGTH ±.015/0.38	TERMINAL PLATING
50013- 1YYYA	YYY	.177/4.50	30μ"/.76μ GOLD
50013- 1YYYY	YYY	.533/13.54	30μ"/.76μ GOLD
50013- 1YYXD	YYY	.733/18.62	30μ"/.76μ GOLD
50013- 1YYYYG	YYY	.250/6.35	30μ"/.76μ GOLD
50013- 1YYYYJ	YYY	.120/3.05	30μ"/.76μ GOLD
50013- 3YYYA	YYY	.177/4.50	50μ"/1.27μ GOLD
50013- 3YYXC	YYY	.533/13.54	50μ"/1.27μ GOLD
50013- 3YYXD	YYY	.733/18.62	50μ"/1.27μ GOLD
50013- 3YYYG	YYY	.250/6.35	50μ"/1.27μ GOLD
50013- 3YYYJ	YYY	.120/3.05	50μ"/1.27μ GOLD
50013- 5YYYA	YYY	.177/4.50	30μ"/.76μ GXT
50013- 5YYVALF	YYY	.177/4.50	30μ"/.76μ GXT
50013- 5YYXC	YYY	.533/13.54	30μ"/.76μ GXT
50013- 5YYXCLF	YYY	.533/13.54	30μ"/.76μ GXT
50013- 5YYXD	YYY	.733/18.62	30μ"/.76μ GXT
50013- 5YYXDLF	YYY	.733/18.62	30μ"/.76μ GXT
50013- 5YYYG	YYY	.250/6.35	30μ"/.76μ GXT
50013- 5YYXGLF	YYY	.250/6.35	30μ"/.76μ GXT
50013- 5YYYJ	YYY	.120/3.05	30μ"/.76μ GXT
50013- 5YYXJLF	YYY	.120/3.05	30μ"/.76μ GXT

NOTES:

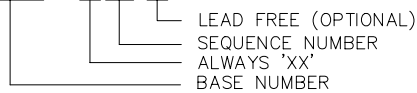
1. PRODUCT NUMBERING CODE:

50013 - X YYY Z LF



PRODUCT NUMBERING CODE FOR
SELECT LOAD/FMLB PART NUMBERS:

50013 - XXYYY LF



- 2. THIS PRODUCT IS CONFIGURED IN SIZES OF 20 thru 122 COLUMNS IN INCREMENTS OF TWO.
i.e.: 20,22,24,26,.....118,120,122.
- 3. HOUSING MATERIAL: GLASS AND MINERAL FILLED HIGH TEMP. THERMOPLASTIC. FLAME RETARDANT PER UL94V-0. COLOR: BLACK.
PIN MATERIAL: PHOS BRONZE

- 4. COMPANY NAME, PART NUMBER AND LOT CODE TO APPEAR ON THIS SURFACE PER BUS-12-108.
- 5. REFERENCE 50811 FOR F.M.L.B. AVAILABLE OPTIONS AND WORKSHEET.
- 6. LENGTH FORMULAS:
DIM "A" .100/2.54 x NO. OF COLUMNS +1.05/26.7
DIM "B" .100/2.54 x NO. OF COLUMNS +.750/19.05
DIM "C" .100/2.54 x NO. OF COLUMNS DIVIDED BY 2 -.100/2.54
- 7. THIS PRODUCT (WITH "LF" SUFFIX) MEETS EUROPEAN UNION DIRECTIVES AND OTHER COUNTRY REGULATIONS AS DESCRIBED IN GS-22-008.
- 8. THIS HOUSING WILL WITHSTAND EXPOSURE TO 260° PEAK TEMPERATURE FOR 10-30 SECONDS IN A CONVECTION, INFRA-RED OR VAPOR PHASE REFLOW OVEN.

mat'l. code SEE NOTE 3		surface ISO 1302 ✓	tolerance ISO 406 ISO 1101	projection 	product family HPC
ltr	ecn	no	dr	date	tolerances unless otherwise specified
N					angles linear .xx ±.01/.3 .xxx ±.005/.13 σ±2' .xxxx ±.0020/.051
					INCH/MM scale 1:1
					title 3 ROW VERTICAL HEADER W/SOLDER TAIL PINS 1 G.P.
					dwg no 50013
					sheet 3 of 3 size A3
					type Product Customer Drawing
sheet index	revision sheet				

FCI connect.com
FCI
Copyright FCI