

EV9720

1 February 2018

Evaluation Kit for the CMX972

The EV9720 is an Evaluation Kit designed for evaluating and demonstrating the capabilities of the CMX972 Quadrature Modulator IF PLL and VCO.

Features

- CMX972 Quadrature 20-300MHz Demodulator
- Options for on-chip PLL or External LO Sources
- C-BUS Interface to Host μ C
- Easy Interfacing to PE0601-xxx

For further information, please refer to the 'Design Resources' section on the CMX972 product page at cmlmicro.com

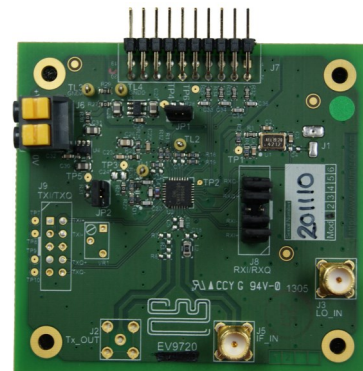
All of the necessary circuits to demonstrate the facilities provided by the IC, such as matching circuits, power supply regulators, etc. are provided on the EV9720 board.

A C-BUS interface connector is provided for control of the EV9720 by a host microcontroller or CML PE0003 Universal Interface card. Alternatively any microcontroller evaluation/emulator kit can be used to drive the CMX972/EV9720 serial bus.



Click here to view the online

**PRODUCT
DATA RESOURCE**



EV9720

WHAT TO DO NEXT

Visit: www.cmlmicro.com

Find: [Distributor](#)

CML Microcircuits Benefits

Faster time to market

Developing proven high performance and field tested ASSP ICs, CML is helping engineers to cope with increasing pressure in delivering shorter project design cycles.

Design flexibility

CML's FirmASIC[®] reconfigurable technology with the use of a Function Image upload enables a single hardware platform to be used for multiple communications systems.

High Quality

With 100% of products being tested before shipping, customers are assured of the highest reliability.

Product Longevity

Designing with CML products, manufacturers are rewarded with longer product life cycles and a stable BOM, ensuring minimum engineering costs and maximum profit.

Low Power

Being at the forefront of low power chip technology, manufacturers can develop smaller equipment with extended battery life.

Superior Support

Internal and field based applications teams worldwide provide focused customer support to ease the development process.