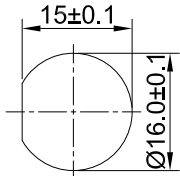
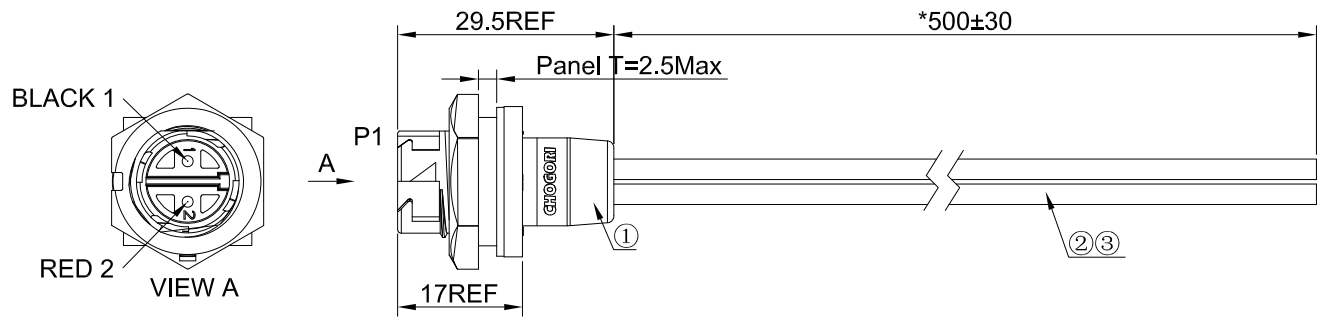


THIS INFORMATION IS CONFIDENTIAL AND IS DISCLOSED TO YOU ON CONDITION THAT NO FURTHER DISCLOSURE IS MADE BY YOU TO OTHER THAN CHOGORI PERSONNEL WITHOUT AUTHORIZATION FROM CHOGORI CORP.

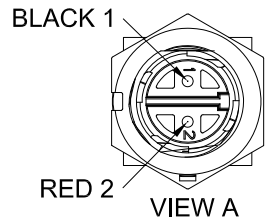
| | | | | | | | | | |
|----------------|--------|-----------------------------|-----------------------|------|--------|-------------|-----------------|-----|------------|
| 1 | 2 | 3 | 4 | 5 | 6 | 7 | 8 | | |
| CUSTOMER No. : | REV. : | CATEGORY | IN LINE WITH THE TYPE | PAGE | REV. : | ECN&ECR No. | DESCRIPTION | DSN | DATE |
| | | | YES NO | | C1 | NA | Initial Drawing | XU | 2022.05.24 |
| | | NEW ENERGY VEHICLE PRODUCTS | | | | | | | |
| | | INDUSTRIAL PRODUCTS | √ | | | | | | |
| | | RoHS | √ | | | | | | |
| | | REACH | | | | | | | |
| | | Halogen-Free | | | | | | | |
| | | CALIFORNIA 65 | | | | | | | |



Panel Cut-Out



P/N: 22002535-01-001



- SPECIFICATIONS:**
- 1.INSULATION RESISTANCE: 10MΩ@500VDC/0.01S.
 - 2.VOLTAGE RATING: 600V.
 - 3.CURRENT RATING: 10A.
 - 4.OPERATION TEMPERATURE: -10℃~+105℃.
 - 5.WATERPROOF IPX7(MATED).
 - 6.RoHS COMPLIANT.

| 3 | 900-00101-00087 | A/C | M | UL1015 18AWG PVC 105℃ 600V RED OD2.8 |
|------|-----------------|-----|------|--|
| 2 | 900-00101-00032 | A/C | M | UL1015 18AWG PVC 105℃ 600V BLACK OD2.8 |
| 1 | 22002535-01-001 | 1 | PC | STANDARD SERIES 2PIN PANEL MOUNT WITH MALE PIN(4 LOCKS,MOLDING,-501) |
| ITEM | PART NO | QTY | UNIT | DESCRIPTION |

MATERIAL OF BILL

| | | | | | |
|-----------|----------------|------------------|----|--------------|--|
| PART No.: | 11C03622051303 | DRAWN BY: | XU | TECHNICS: | |
| MATERIAL: | | PROOFREADED BY: | | QUALITY: | |
| MOLD No.: | | CHECKED BY: | | APPROVED BY: | |
| | | STANDARDISATION: | | | |

| | | | | | |
|-----------------------------------|--|--------------|--|-----------------|--|
| UNIT: mm | | DESCRIPTION: | STANDARD SERIES 2PIN PANEL MOUNT WITH MALE PIN(4 LOCKS,MOLDING,-501) L=500MM | | |
| 未注线性和角度尺寸公差 UNSPECIFIED TOLERANCE | | SCALE: 1:1 | SHEET: 1 OF 1 | | |
| GB/T 1804-M | | REV.: C1 | SIZE: A4 | ASME Y14.5-2009 | |

CHOGORI[®]
深圳乔合里科技股份有限公司

A B C D E F