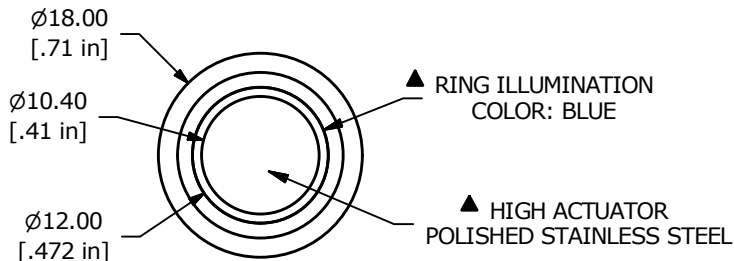


PANEL CUTOUT  
MAX. PANEL THICKNESS  
14.0mm [.55]



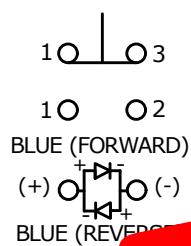
▲ RING ILLUMINATION  
COLOR: BLUE

▲ HIGH ACTUATOR  
POLISHED STAINLESS STEEL

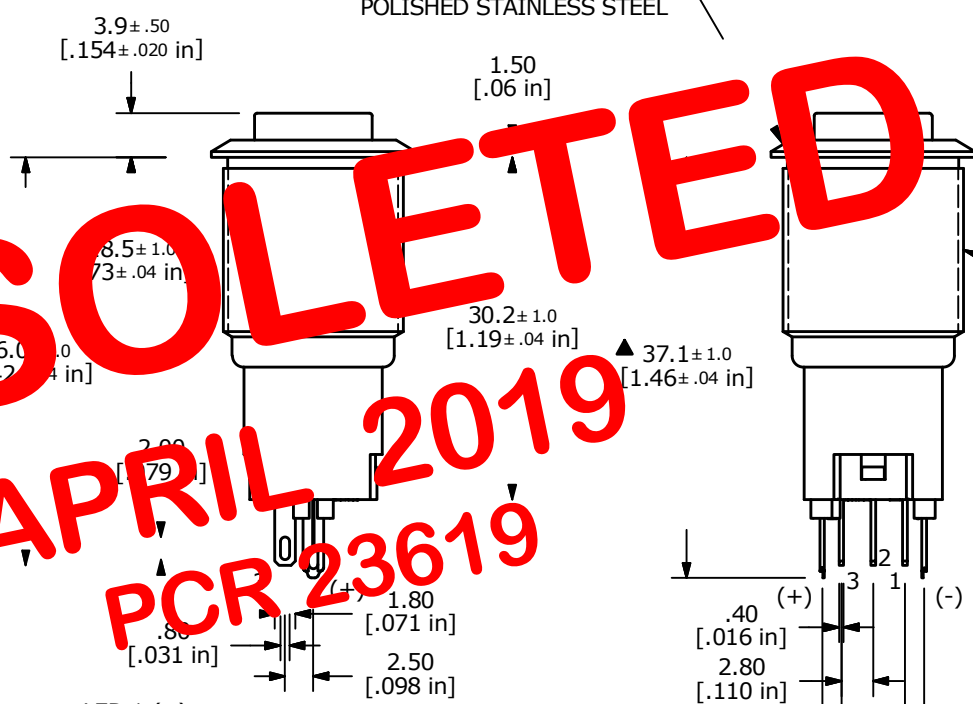
▲ BODY  
POLISHED STAINLESS STEEL



SWITCH FUNCTION	
POS. 1	POS. 2
ON	(ON)
1-3	1-2
(ON) = MOMENTARY	

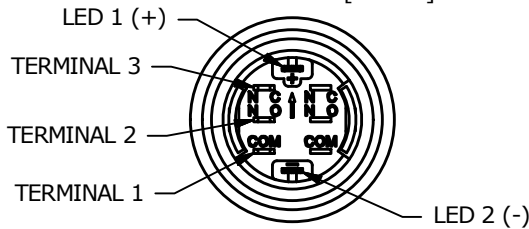


BLUE (FORWARD)  
BLUE (REVERSE)



**OBSOLETE**  
**APRIL 2019**  
**PCR 23619**

- NOTE:
1. ALL DIMENSIONS IN MM [INCH]
  2. GENERAL TOLERANCE: X.X = ±0.4  
X.XX = ±0.25
  3. TERMINAL NUMBERS FOR REF ONLY
  - ▲ 4. CONTACT MATERIAL: SILVER
  5. RATING: 2A 48VDC
  6. ELECTRIC LIFE: 50,000 MAKE-AND-BREAK CYCLES AT FULL LOAD.
  7. INSULATION RESISTANCE: 1,000 MΩ MIN.
  8. DIELECTRIC STRENGTH: 2,000 VAC MIN. FOR 1 MINUTE
  9. CONTACT RESISTANCE: 50mΩ MAX. @ 1A 12VDC
  10. OPERATING TEMP.: -20°C to 55°C
  11. ▲ DENOTES CRITICAL PARAMETER.
  - ▲ 12. HARDWARE SUPPLIED: O-RING AND HEXNUT
  13. INGRESS RATING: IP65
  14. 2011/65/EU (ROHS) COMPLIANT
  - ▲ 15. LAMP VOLTAGE: 24V



C	23366	UPDATED RATING TO 2A 48VDC	5/14/18	MJR
B	22889	UPDATED RATING TO 1A 24VDC	6/28/17	MJR
REV	PCR NO	DESCRIPTION	DATE	BY

TITLE PV3WH2B0SS-345				
SCALE 3:2	DATE 10/19/2012	DR EBP	DWG 52-PV3WH2B0SS345	REV C

THE INFORMATION CONTAINED IN THIS DOCUMENT IS PROPRIETARY TO E-SWITCH AND IS NOT TO BE COPIED OR TRANSFERRED