

PRESSURE 5 CLICK

PID: MIKROE-3566

Weight: 18 g

Pressure 5 click is a barometric pressure measurement Click board™, which features the BMP388, an accurate absolute barometric pressure sensor. Due to its very high sensing accuracy, it is perfectly suited for precise altitude tracking applications. The BMP388 pressure sensor can use both SPI and I2C communication protocols, allowing it to be interfaced with a broad range of MCUs. The BMP388 features onboard processing capabilities such as the IIR filtering, which can be used to filter out abrupt pressure changes. Thanks to its very low power consumption, Pressure 5 click to be used in a wide range of battery-powered and portable applications.

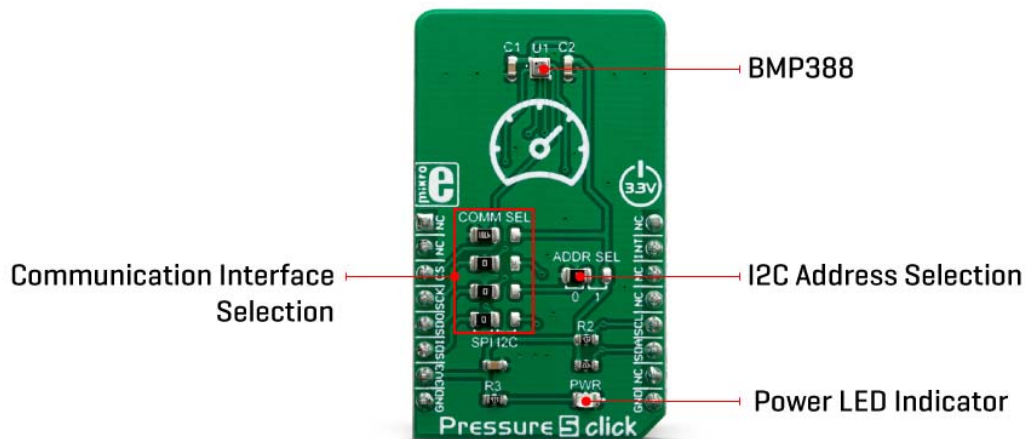
Pressure 5 click is supported by a mikroSDK compliant library, which includes functions that simplify software development. This Click board™ comes as a fully tested product, ready to be used on a system equipped with the mikroBUS™ socket.

Besides the pressure readings, the Pressure 5 click also offers very accurate temperature reading, which is required for the pressure readings compensation. Oversampling up to 32 times combined with the filtering options allows very low noise influence on measurement results. Depending on the application in which the Click board™ is used, different power saving, oversampling, and filtering settings can be

implemented, resulting in optimal performance in given conditions. All these features make the Pressure 5 click an ideal solution for the development of portable weather station applications, indoor navigation for flying toys and drones, and similar applications that rely on reliable barometric pressure measurements.

HOW DOES IT WORK?

The sensor used on the Pressure 5 click is the BMP388, a digital pressure sensor, from Bosch Sensortech. This sensor consists of a piezo-resistive pressure sensing element and a mixed-signal ASIC which performs A/D conversions and provides the conversion results through a digital interface. This advanced MEMS technology offers a high measurement precision of 0.08hPa, as well as low TOC (thermal coefficient) of only 0.75 Pa/K. The sensor is enclosed in a small metal lid housing and is highly resilient: it can operate in a range of 300 hPa to 1250 hPa but can withstand up to 20,000 hPa before the membrane breaks down.



The BMP388 offers a set of pressure and temperature measurement options. It can be programmed to skip either thermal or pressure measurement, allowing faster measurement of the required property. The low TOC of only 0.75Pa/K allows reading of the pressure with very small drift over temperature. Resolution of 0.08hPa allows calculating of the altitude with the accuracy of about 66 cm, which is ideal for indoor navigation applications (drones, flying toy models, and similar). The IIR filter is especially useful for indoor usage, allowing filtering of some short-term disturbances, such as slamming doors or windows.

FIFO buffer allows for an optimization of the host firmware, reducing the data traffic through the communication interface. It has 512 bytes and it is backed up by an interrupt engine, which can trigger an interrupt event when the buffer is full, or when the watermark level is reached. Also, the behavior of the FIFO buffer can be programmed to

either skip new data once it is full or to overwrite the oldest data. The interrupt is available over the INT pin, and can be used to further optimize the host firmware (i.e. to reduce the power consumption by utilizing the INT pin to wake up the host MCU). Besides FIFO events, the INT pin also signals when there is a new data available at the output register (Data Ready event).

This sensor consists of a mixed signal front-end (ASIC) and a piezo-sensitive pressure sensing element. The ASIC contains a low-noise 24-bit A/D converter, along with the digital signal processing section. The measurement data is available either over the I2C or the SPI interface. Pressure 5 click offers a choice between these two interfaces. The selection can be done by positioning SMD jumpers labeled as COMM SEL to an appropriate position. Note that all the jumpers must be placed to the same side, else the Click board™ may become unresponsive. While the I2C interface is selected, the BMP388 allows the choice of the least significant bit (LSB) of its I2C slave address. This can be done by using the SMD jumper labeled as ADDR SEL.

The overall power consumption depends on several factors, such as the oversampling value, measurement rate, power mode, standby duration, and so on. Bosh Sensortech recommends a set of operational parameters for different applications, in the form of a table, in the BMP388 datasheet. In general, this sensor allows several power modes, regardless of the selected measurement parameters:

- Sleep mode: keeps only the logic section of the sensor IC powered. It is possible to read the device ID and compensation parameters. The power consumption is minimal in this mode.
- Forced mode: when the Forced mode command is received, the device is awakened from the sleep mode; a single measurement is performed, according to previously programmed conversion parameters. After that, the device reverts to the Sleep mode, waiting to be triggered once more by repeated selection of the Force mode. The conversion results can be read from the registers since the Sleep mode keeps the logic section powered up.
- Normal mode: in this mode, conversions are cyclically repeated, with programmable standby periods after each measurement. The power consumption in this mode varies with the standby period duration. Once selected, the cycle repeats, so there is no need to repeat the Normal mode command.


When the measurement is completed, raw ADC values will be available in the output registers. However, to obtain actual pressure and temperature readings, a compensation algorithm needs to be applied. A set of compensation parameters is available in the non-volatile memory of the BMP388 device. These compensation parameters take into account slight differences between the produced samples and each BMP388 device has its own set of parameters. The BMP388 datasheet offers detailed instructions on how to apply these compensating algorithms properly. However, MikroElektronika provides a library with functions which can be used for a simplified and thus faster application development. The library also contains a demo example, which demonstrates the use of these functions. The demo application can be used as a reference for a custom design.

SPECIFICATIONS

Type	Pressure
Applications	It can be used for weather stations, indoor flying toys navigation, drones, variometers, and similar applications that rely on reliable barometric pressure measurements.
On-board modules	BMP388, a digital pressure sensor, from Bosh Sensortech.
Key Features	Very accurate pressure and temperature readings, on-chip IIR data filtering, it can use either SPI or I2C communication protocol, customizable power consumption in three different power modes, etc.
Interface	I2C,SPI
Input Voltage	3.3V
Click board size	S (28.6 x 25.4 mm)

PINOUT DIAGRAM

This table shows how the pinout on **Pressure 5 click** corresponds to the pinout on the mikroBUS™ socket (the latter shown in the two middle columns).

Notes	Pin					Pin	Notes
	NC	1	AN	PWM	16	NC	
	NC	2	RST	INT	15	INT	Interrupt
SPI Chip Select	CS	3	CS	RX	14	NC	

SPI Clock	SCK	4	SCK	TX	13	NC	
SPI Data OUT	SDO	5	MISO	SCL	12	SCL	I2C Clock
SPI Data IN	SDI	6	MOSI	SDA	11	SDA	I2C Data
Power Supply	3.3V	7	3.3V	5V	10	NC	
Ground	GND	8	GND	GND	9	GND	Ground

PRESSURE 5 CLICK ELECTRICAL SPECIFICATIONS

Description	Min	Typ	Max	Unit
Pressure range	300	-	1250	hPa
Pressure measurement resolution	-0.08	-	+0.08	hPa
Temperature range	-40	-	+85	°C
Temperature measurement resolution	±0.3	-	±0.5	°C

ONBOARD SETTINGS AND INDICATORS

Label	Name	Default	Description
LD1	PWR	-	Power LED Indicator
COMM SEL	COMM SEL	Left	Communication protocol selection: left position SPI, right position I2C

ADDR SEL	ADDR SEL	Left	I2C Address selection bit: left position 0, right position 1
----------	----------	------	--

SOFTWARE SUPPORT

We provide a library for the **Pressure 5** [click](#) on our LibStock page, as well as a demo application (example), developed using MikroElektronika compilers. The demo can run on all the main MikroElektronika development boards.

Library Description

The library initializes and defines the I2C or SPI bus driver and drivers that offer a choice for writing data in register and reads data from register. The library includes function for read Pressure data in mBar and Temperature data in C. The user also has the function for update all calibration coefficients, function for software reset, read Interrupt state and functions for get Pressure and Temperature raw data.

Key functions:

- float pressure5_getTemperatureData() - Temperature data in C.
- float pressure5_getPressureData() - Pressure data in mBar.
- void pressure5_updateCoefficient() - Update calibration coefficients.

Examples description

The application is composed of the three sections :

- System Initialization - Initializes I2C or SPI module, sets INT pin as INPUT and CS pin as OUTPUT.
- Application Initialization - Initialization driver init, test communication, software reset, update coefficient and configuration module for start measurement.
- Application Task - Reads Pressure data in [mBar] and Temperature data in [C]. Logs all data to the USBUART every 1500ms.

```
void applicationTask()
{
    float Temperature;
    float Pressure;
    char demoText[ 50 ] = {0};

    Temperature = pressure5_getTemperatureData();
    FloatToStr(Temperature, demoText);
    mikrobus_logWrite(" Temperature: ", _LOG_TEXT);
    mikrobus_logWrite(demoText, _LOG_TEXT);
    mikrobus_logWrite(" C", _LOG_LINE);
}
```

```
Pressure = pressure5_getPressureData();
FloatToStr(Pressure, demoText);
mikrobus_logWrite(" Pressure: ", _LOG_TEXT);
mikrobus_logWrite(demoText, _LOG_TEXT);
mikrobus_logWrite(" mBar ", _LOG_LINE);

mikrobus_logWrite("-----", _LOG_LINE);
Delay_ms( 1500 );
}
```

The full application code, and ready to use projects can be found on our LibStock page. Other mikroE Libraries used in the example:

- SPI
- UART
- I2C
- Conversions

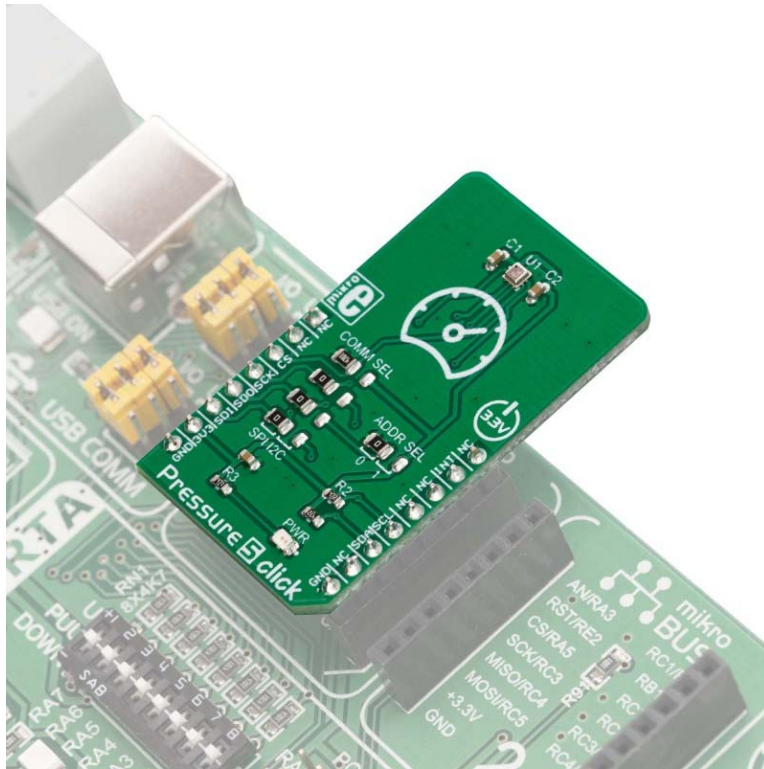
Additional notes and informations

Depending on the development board you are using, you may need USB UART click, USB UART 2 click or RS232 click to connect to your PC, for development systems with no UART to USB interface available on the board. The terminal available in all MikroElektronika compilers, or any other terminal application of your choice, can be used to read the message.

MIKROSDK

This click board is supported with mikroSDK - MikroElektronika Software Development Kit. To ensure proper operation of mikroSDK compliant click board demo applications, mikroSDK should be downloaded from the LibStock and installed for the compiler you are using.

For more information about mikroSDK, visit the official page.



<https://www.mikroe.com/pressure-5-click/5-15-19>