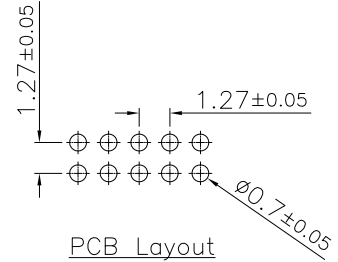
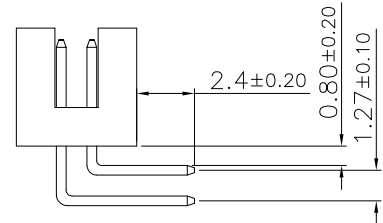
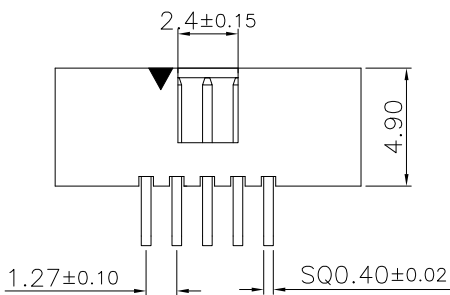


Specifications:
 Current rating:1.0A AC,DC
 Voltage rating:50V AC, DC
 Contact tesistance:20m ohm Max
 Insulation resistance:1,000M ohm Min
 Withstanding voltage:500V AC/minute
 Operating Temperature:-40°C ~ +105°C

Materials:
 Insulator:Nylon 9T(UL94V-0)
 Standard Color:Black
 Terminal:Brass
 Finish:Gold Plated

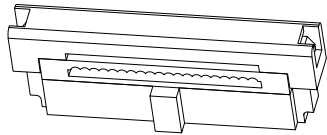


PCB Layout

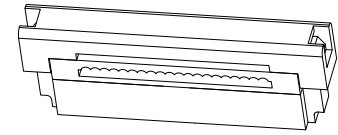
Dimension Information:

Pin.No	Dim.A	Dim.B	Dim.C	Pin.No	Dim.A	Dim.B	Dim.C
8	3.81	9.83	11.43	30	17.78	23.80	25.40
10	5.08	11.10	12.70	34	20.32	26.34	27.94
12	6.35	12.37	13.97	40	24.13	30.15	31.75
14	7.62	13.64	15.24	44	26.67	32.69	34.29
16	8.89	14.91	16.51	50	30.48	36.50	38.10
20	11.43	17.45	19.05	60	36.83	42.85	44.45
24	13.97	19.99	21.59	68	41.91	47.93	49.53
26	15.24	21.26	22.86				

MATING PART
 3230-XX-0103-00



MATING PART
 3230-XX-0104-00



RoHS Compliant

				DRAWN: Jamie	GENERAL TOLERANCE: .X=±0.25 .XX=±0.20	CnC Tech Industrial Cable and Connector Technology	
				CHECKED: Jerry	UNIT: MM		
				APPROVAL: Rory	SCALE:1:1	PART NO: 3221-XX-0200-00	A4
REV	DATE	FILE	BY		SHEET: 1 / 1		
					PROJECTION:		

A
B
C
D