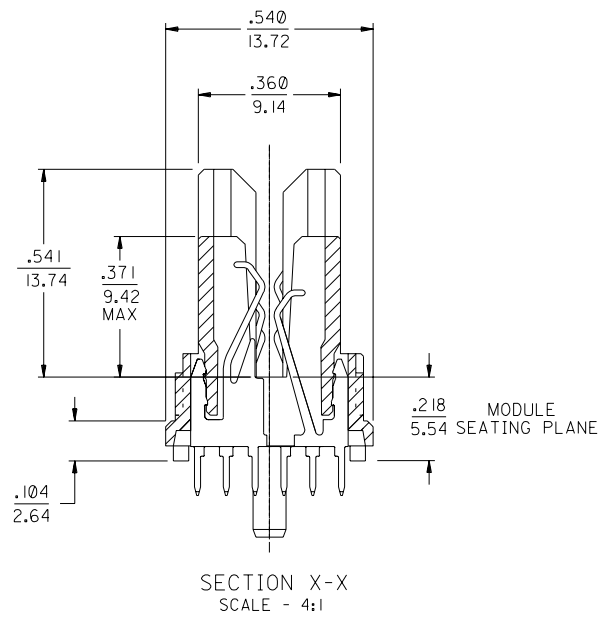
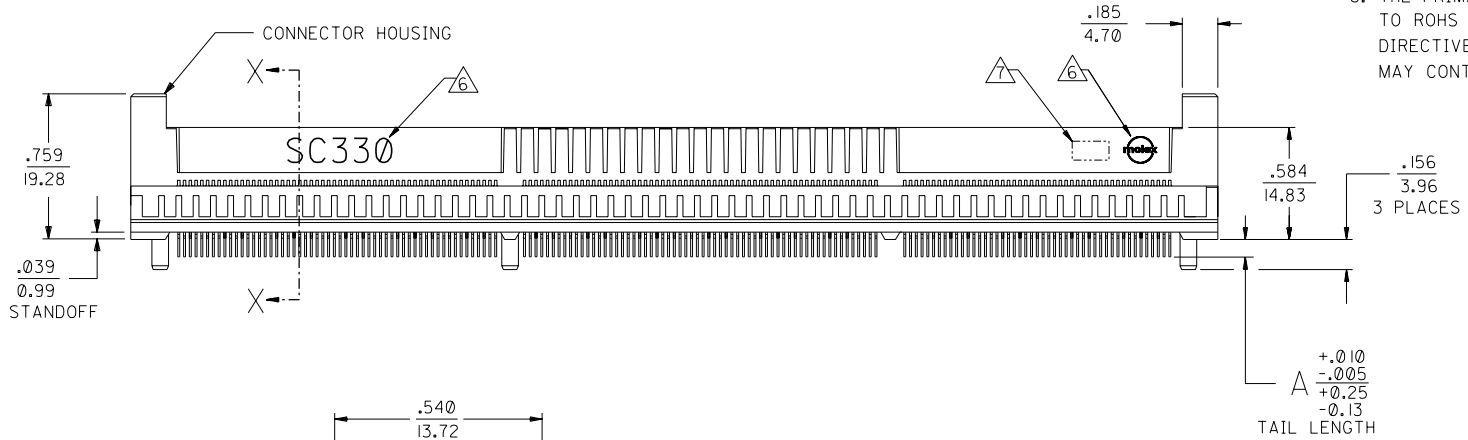
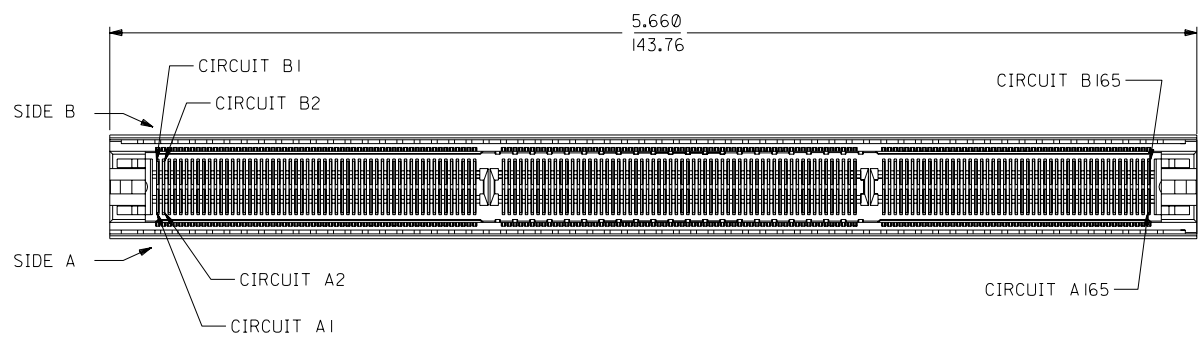


NOTES:

1. MATERIALS:
HOUSING - LCP, 30% GLASS FILLED, 94-V0, BLACK.
TERMINALS - PHOSPHOR BRONZE.
2. FINISH:
TERMINALS - .000030/0.00076 MINIMUM GOLD IN THE CONTACT AREA AND .000075/0.0019 MINIMUM TIN IN SOLDER TAIL AREA OVER .000050/0.0013 MINIMUM NICKEL OVERALL.
3. PRODUCT SPECIFICATION PS-71109-9990 APPLIES.
4. CARD SLOT ACCEPTS .062 +.007/-.005 P.C. BOARD.
5. THE RECOMMENDED PLATING SPECIFICATION FOR THE MATING PC BOARD IS .000030/0.0076 MINIMUM GOLD OVER .000075/0.0019 MINIMUM NICKEL.
6. "SC330" AND MOLEX LOGO SHALL APPEAR ON BOTH SIDES OF HOUSING, AND LOCATED APPROXIMATELY AS SHOWN.
7. FOUR DIGIT DATE CODE (YR/WK) SHALL BE LOCATED APPROXIMATELY AS SHOWN.
8. THE PRIMARY SHIPPING CARTON WILL BE LABELED "COMPLIANT TO ROHS DIRECTIVE 2002/95/EC AND ELV ANNEX II OF DIRECTIVE 2000/53/EC". CARTONS WITHOUT THIS LABEL MAY CONTAIN PRODUCT WITH LEAD.

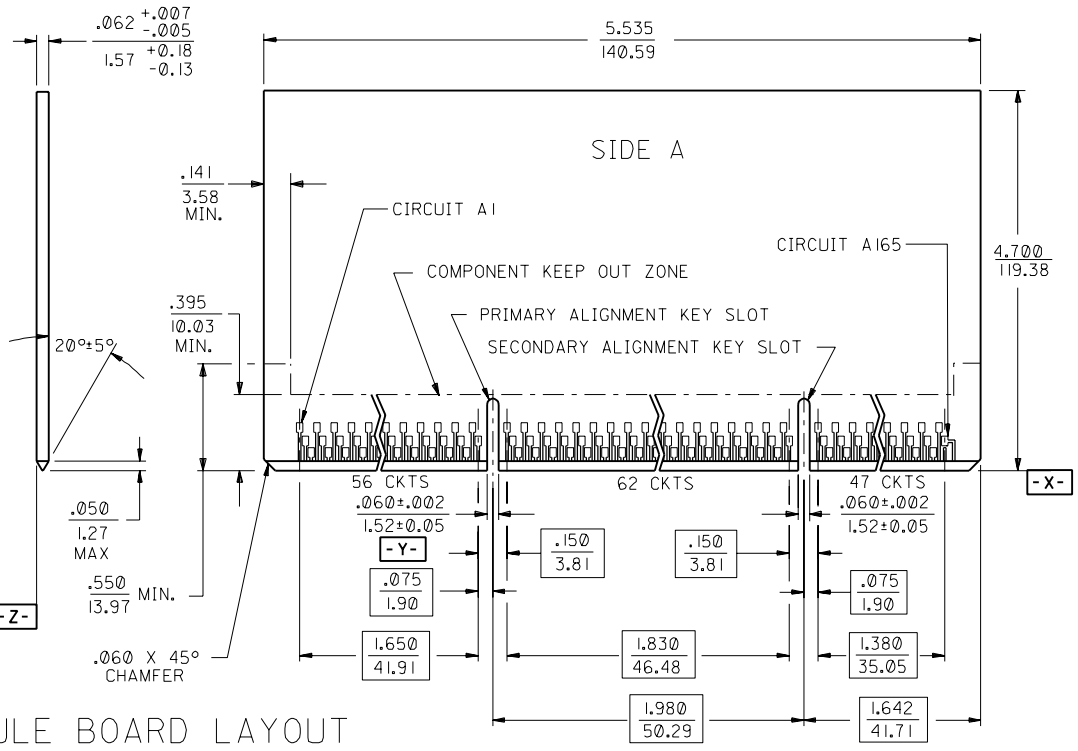
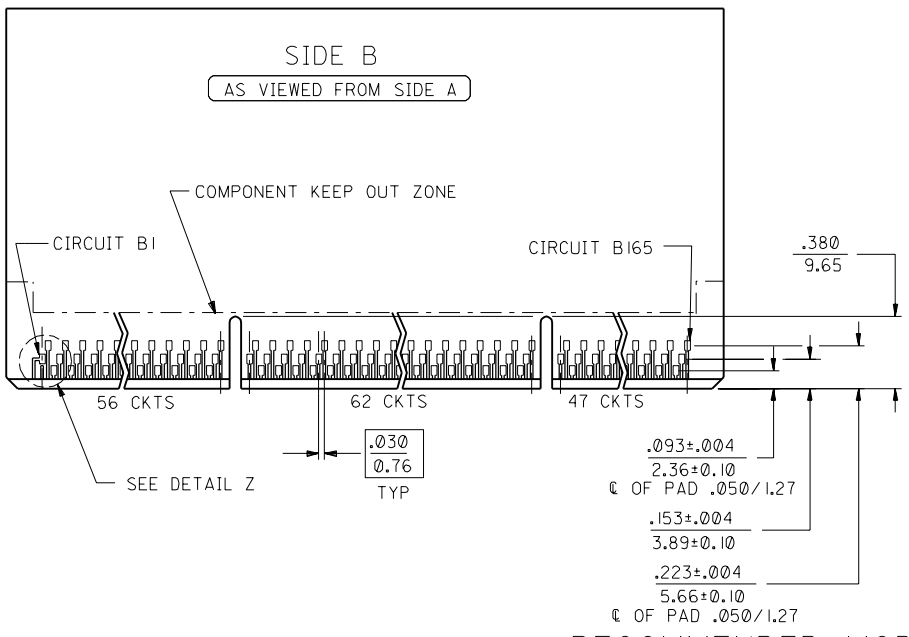


71109-2007	.140/3.56
71109-2006	.115/2.92
71109-2005	.090/2.29
MAT'L NUMBER	A

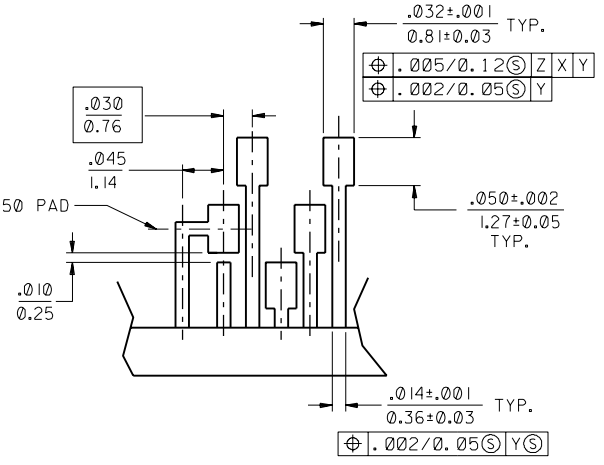
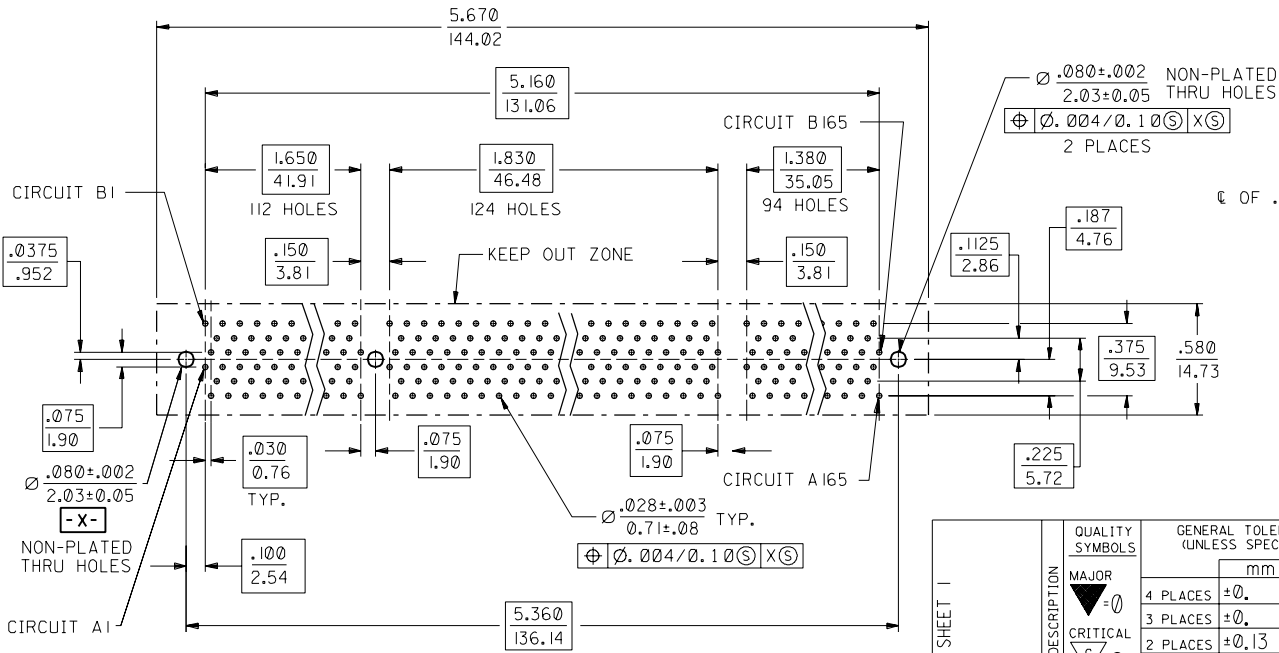
PLATING CHANGE	EC NO. UCP2004-2347
DRWR: RWHITE	04/05/21
CHK: BBARKER	04/05/21
APPR: SMILLER	04/05/21
REV	H

QUALITY SYMBOLS	GENERAL TOLERANCES: (UNLESS SPECIFIED)	SCALE 2 : 1	DESIGN UNITS <input type="checkbox"/> mm <input checked="" type="checkbox"/> INCH
MAJOR $\nabla=0$	mm INCH	DRAWN BY & DATE	NELSON 06/20/97
CRITICAL $\nabla/C=0$	4 PLACES ±0. ±.	CHECKED BY & DATE	NELSON 06/20/97
	3 PLACES ±0. ±.005	APPROVED BY & DATE	FUNCK 06/20/97
	2 PLACES ±0.13 ±.	CAD FILENAME	S7110966.S01
	1 PLACE ±0. ±.	MATERIAL NO.	SEE TABLE
	ANGULAR: ± 1 °	DRAWING NO.	SD-71109-203
	DRAFT WHERE APPLICABLE MUST REMAIN WITHIN DIMENSIONS	SHEET NO.	1 OF 2

DIMENSIONS: <input type="checkbox"/> mm <input checked="" type="checkbox"/> INCH <input type="checkbox"/> mm ONLY		THIRD ANGLE PROJECTION	2 F
TITLE: SALES ASSEMBLY SC330 "HiSpec" CONNECTOR W/PLASTIC PEGS		MOLEX INCORPORATED	I H
THIS DRAWING CONTAINS INFORMATION THAT IS PROPRIETARY TO MOLEX INCORPORATED AND SHOULD NOT BE USED WITHOUT WRITTEN PERMISSION.		SIZE	REV
		C	REVISE ON CAD ONLY



RECOMMENDED MODULE BOARD LAYOUT



RECOMMENDED PCB HOLE LAYOUT

SEE SHEET 1	REV	QUALITY SYMBOLS	GENERAL TOLERANCES: (UNLESS SPECIFIED)	SCALE 2 : 1	DESIGN UNITS <input type="checkbox"/> mm <input checked="" type="checkbox"/> INCH	THIRD ANGLE PROJECTION <input type="checkbox"/> <input checked="" type="checkbox"/>	DIMENSIONS: <input type="checkbox"/> INCH <input checked="" type="checkbox"/> mm <input type="checkbox"/> ONLY	SHT	REV
		MAJOR ∇=0	4 PLACES ±0. ±.	DRAWN BY & DATE NELSON 06/20/97	TITLE: SALES ASSEMBLY SC330 "HiSpec" CONNECTOR W/PLASTIC PEGS				
		CRITICAL ∇=0	3 PLACES ±0. ±.005	CHECKED BY & DATE NELSON 06/20/97	APPROVED BY & DATE FUNCK 06/20/97	MATERIAL NO. SEE TABLE	DRAWING NO. SD-71109-203	SHEET NO. 2	
			2 PLACES ±0.13 ±.	CAD FILENAME S7110966.S02	MOLEX INCORPORATED		SIZE C		
		1 PLACE ±0. ±.	ANGULAR: ± 1 °	THIS DRAWING CONTAINS INFORMATION THAT IS PROPRIETARY TO MOLEX INCORPORATED AND SHOULD NOT BE USED WITHOUT WRITTEN PERMISSION.					