

4

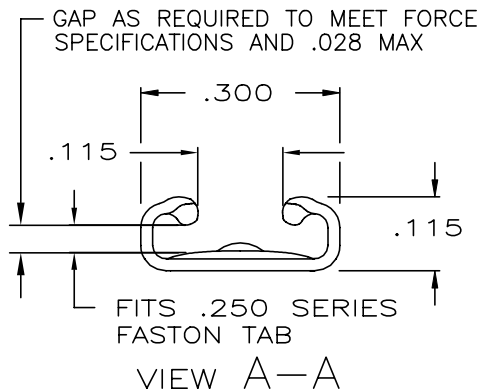
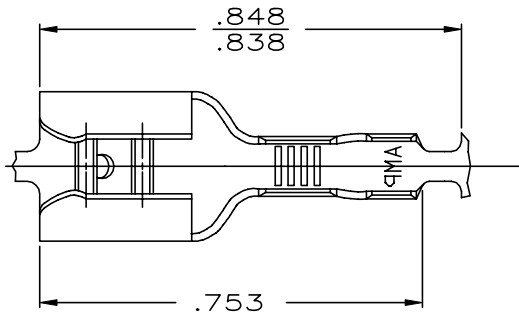
3

2

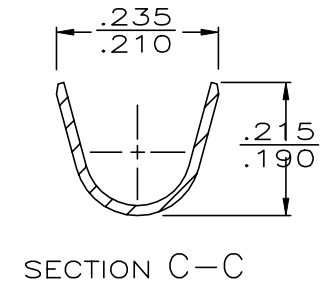
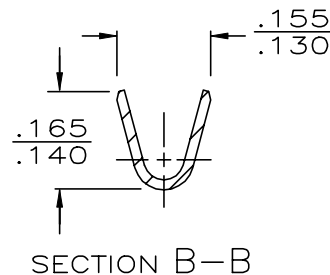
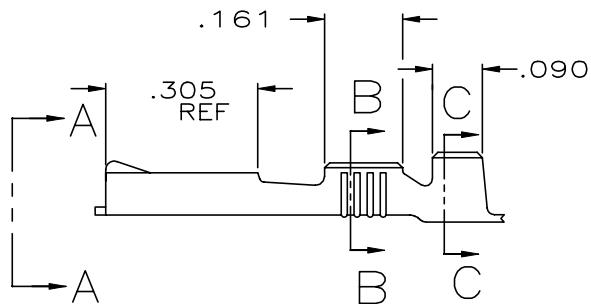
1

THIS DRAWING IS UNPUBLISHED. RELEASED FOR PUBLICATION
 © COPYRIGHT - By - ALL RIGHTS RESERVED.

LOC	DIST	REVISIONS			
P	LTR	DESCRIPTION	DATE	DWN	APVD
AF	50	U	REVISED PER ECR-12-013445	09NOV12	KH PD
		U1	REVISED PER ECR-20-009164	14JUL2020	MK DH



- 1 CONTINUOUS STRIP ON REELS.
- 2 MATING TAB THK IS .033-.030
- 3 WIRE SIZE IS #18-#14 AWG.
- 4 INSULATION RANGE IS .120-.170 DIA. ±.001
- 5 PRELIMINARY - NOT FOR PRODUCTION
- 6 REDUCED PACKAGE QUANTITY



TIN	.016±.001 BRASS	6 542660-6
NICKEL	.016±.001 STEEL	5 42660-5
PRE-TIN	.016±.001 BRASS	42660-4
TIN	BRASS	42660-2
	BRASS	42660-1
FINISH	MATERIAL	PART NO

DIMENSIONS: INCHES		TOLERANCES UNLESS OTHERWISE SPECIFIED:		DWN		TE Connectivity	
		0 PLC	± -	JR RUTH	4/17/86	RECEPTACLE FASTON™ .250 SERIES	
		1 PLC	± -	CHK	4/17/86		
		2 PLC	± -	G YETTER			
		3 PLC	± .015	APVD	4/17/86		
MATERIAL SEE ABOVE		FINISH SEE ABOVE		C MEYERS		NAME	
				PRODUCT SPEC		SIZE CAGE CODE DRAWING NO RESTRICTED TO	
				APPLICATION SPEC		A3 00779 C=42660	
				WEIGHT -		SCALE NTS SHEET 1 of 1 REV U1	
				CUSTOMER DRAWING			