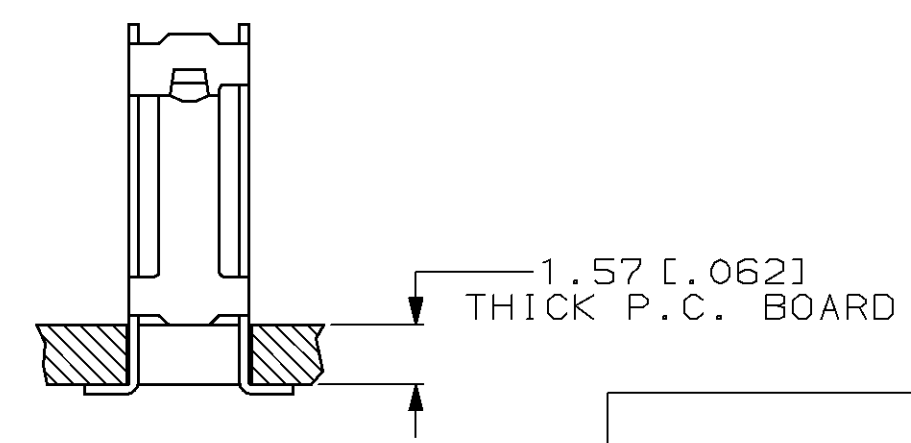
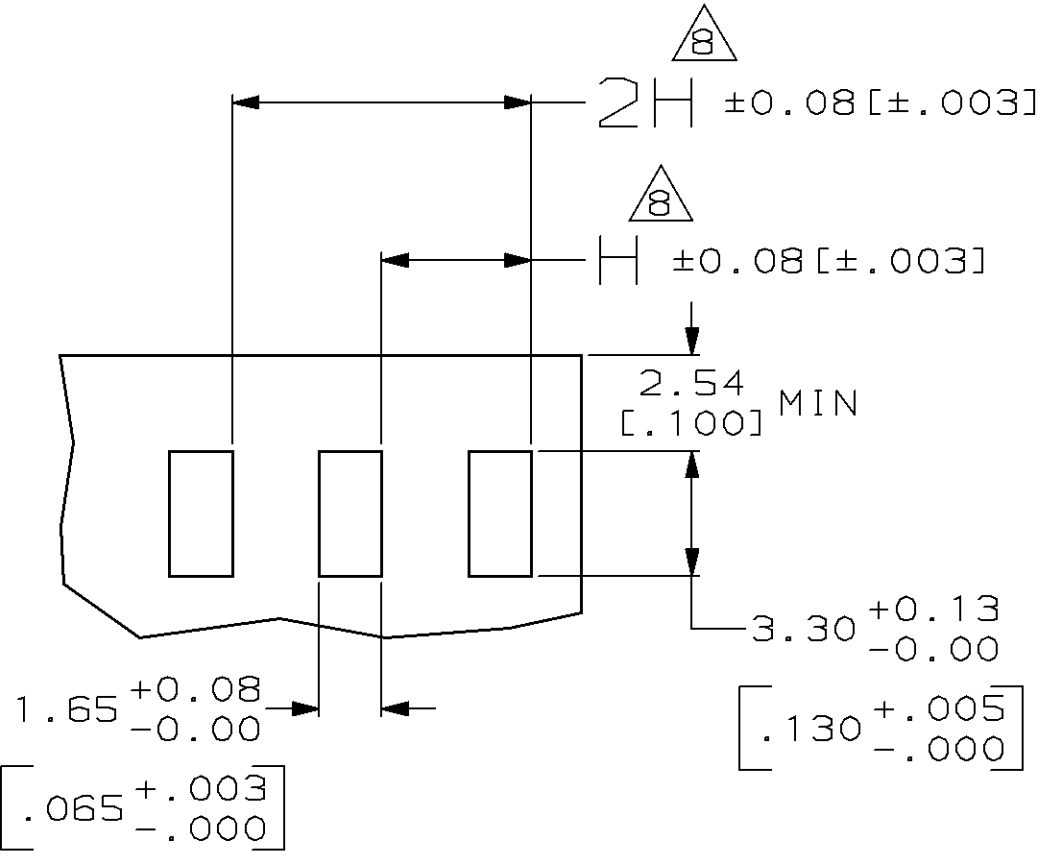
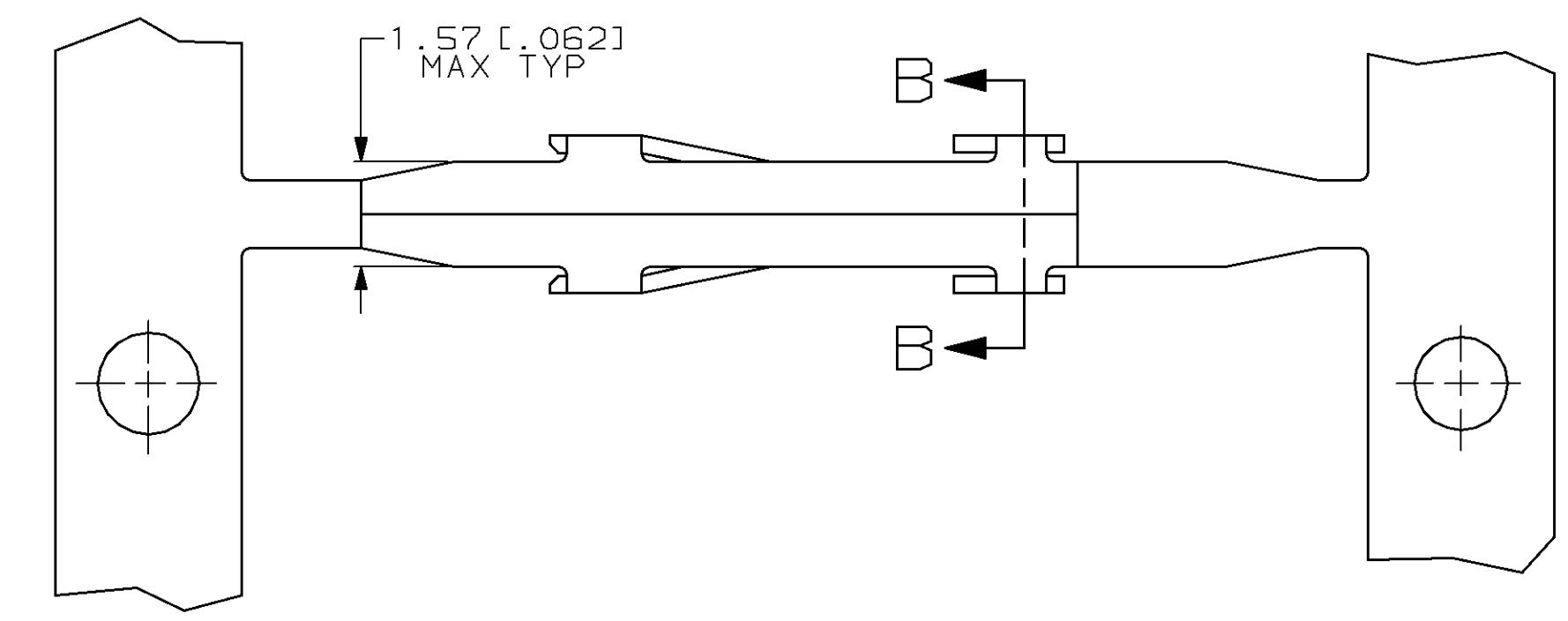
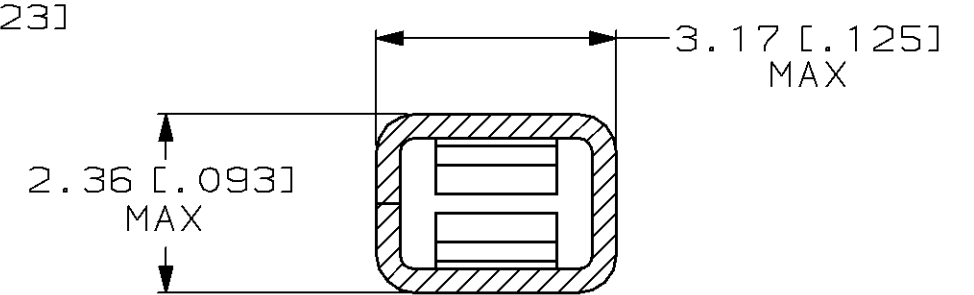
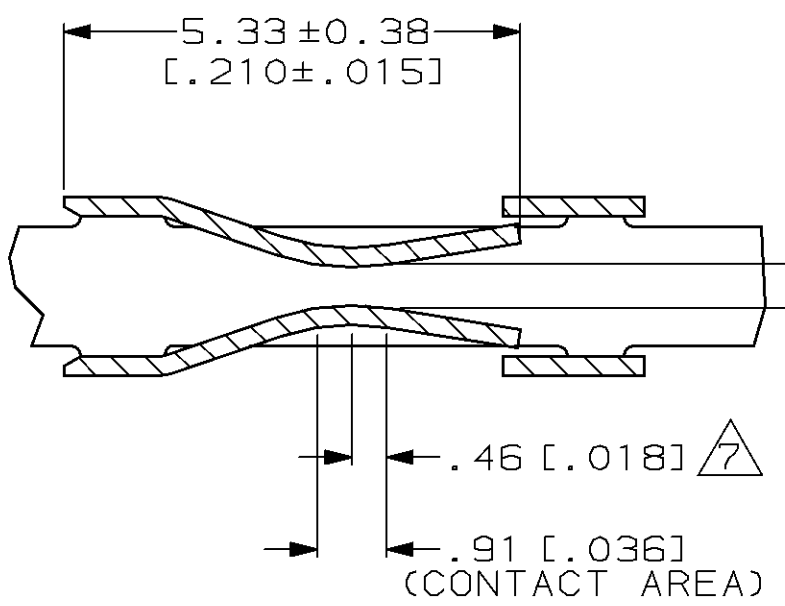
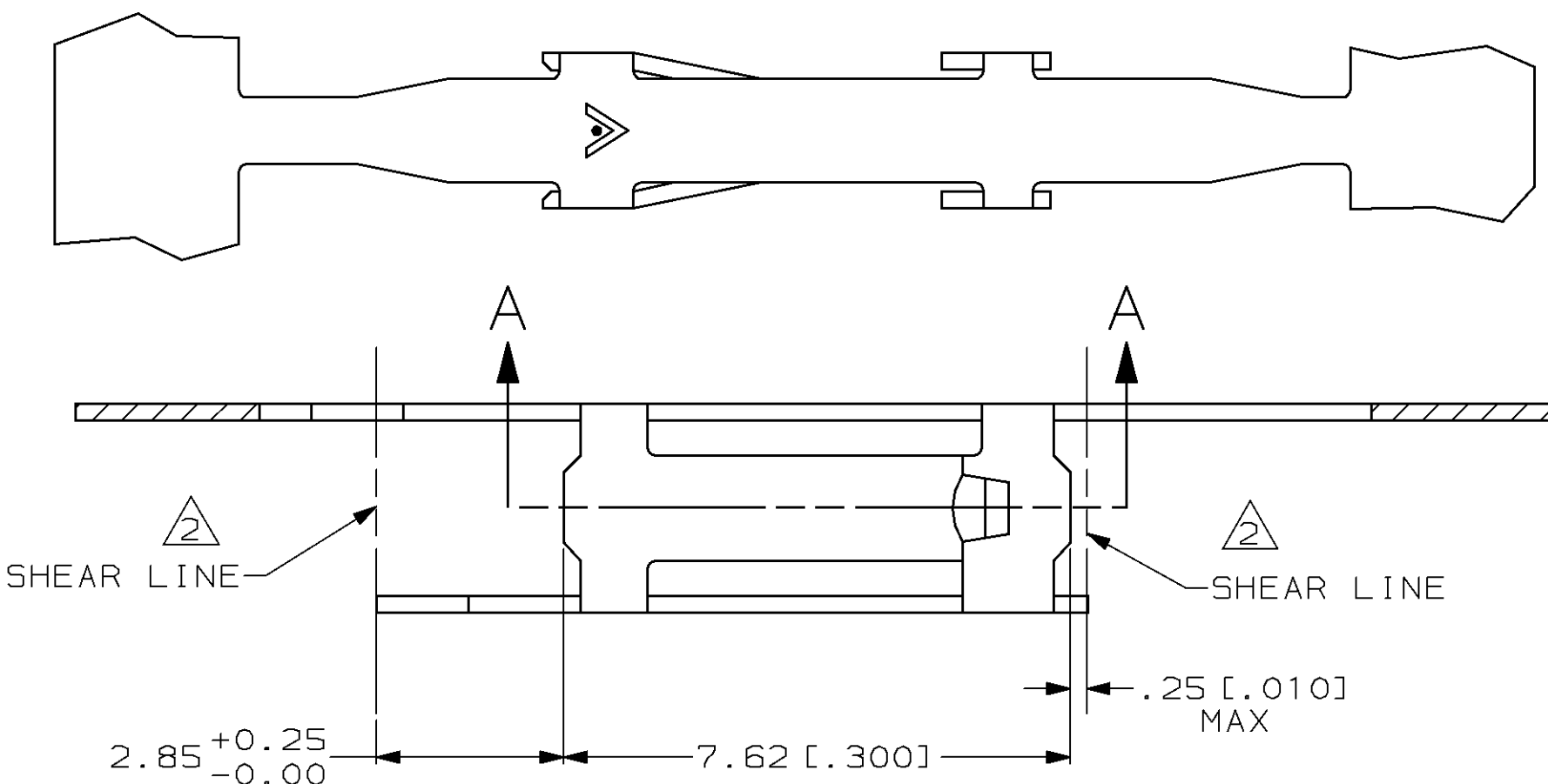


LOC	DIST	P	F	ZONE	LTR	DESCRIPTION	DATE	APPD
AD	39				H	REV PER 0010-1061-94	12-28-96	JH
					J	REV PER 0010-1175-95	12-28-96	JH



- 1 PHOSPHOR BRONZE 0.25 [ .010 ] COML.
- 2 SHEAR LINES DEFINE LOOSE PIECE PART.
- 3 PRE-TINNED 0.00076 [ .000030 ] MIN THICK.
- 4 GOLD FLASH OVER 0.00127 [ .000050 ] NICKEL ENTIRE CONTACT, 0.00076 [ .000030 ] GOLD ON CONTACT AREA.
- 5 0.00038 [ .000015 ] GOLD ON CONTACT AREA, 0.00254-0.00508 [ .000100-.000200 ] BRIGHT TIN-LEAD ON TERMINATION AREA, ALL OVER 0.00127 [ .000050 ] NICKEL.
- 6 0.00076 [ .000030 ] GOLD ON CONTACT AREA, 0.00254-0.00508 [ .000100-.000200 ] BRIGHT TIN-LEAD ON TERMINATION AREA, ALL OVER 0.00127 [ .000050 ] NICKEL.
- 7 POINT OF MEASUREMENT FOR PLATING THICKNESS.
- 8 "H" RECEPTACLE CENTERS MAY VARY DEPENDING ON REQUIREMENTS. MINIMUM NOMINAL CENTERLINE SPACING BETWEEN ADJACENT RECEPTACLES IS 3.18 [ .125 ].

OBSOLETE	86443-6	6	1	86442-6
OBSOLETE	86443-3	5	1	86442-4
OBSOLETE	86443-2	4	1	86442-2
	86443-1	3	1	86442-1
	LOOSE PIECE PART NO.	FINISH	MATERIAL	PART NUMBER

DO NOT SCALE PRINT. UNLESS SPECIFIED DIMENSIONS IN mm [INCHES] TOLERANCES ON: 2 PLC DEC ± - 3 PLC DEC ± 0.13 [ .005 ] ANGLES ± -		DR 28-DEC-96 E. BRANDBERG		AMP Incorporated Harrisburg, PA 17105-3608	
MATERIAL SEE TABLE		CHK 28-DEC-96 J. HERRINGTON			
FINISH SEE TABLE		APPD 28-DEC-96 J. HERRINGTON		NAME FEMALE CONTACT - VERTICAL TYPE "A", MOD 1, HIGH PRESSURE	
WEIGHT -		APPD 28-DEC-96 D. TROUT		SIZE C 00779	
		APPLICATION SPEC -		DRAWING NO G=86442	
				SCALE 10:1	
				SHEET 1 OF 1	

THIS DRAWING IS A CONTROLLED DOCUMENT FOR AMP INCORPORATED. IT IS SUBJECT TO CHANGE AND THE CONTROLLING ENGINEERING ORGANIZATION SHOULD BE CONTACTED FOR THE LATEST REVISION.