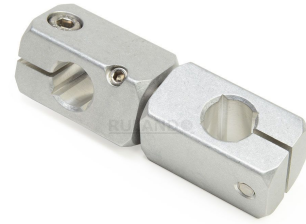
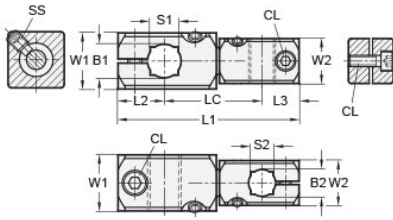




MT15/15-CC2WA-A

Ruland Adjustable Two-Way Connector Clamp, Thru Holes 15mmx15mm, L 87.5mm, W 25mm, Aluminum




Description

Ruland MT15/15-CC2WA-A an adjustable two-way connector clamp with thru holes for 15mm round and 12mm square tubes, M6 clamp screws, 25mm width and height, and 87.5mm overall length. It is designed to fit on Ruland tubes and flange bolt bases that begin with MT15. MT15/15-CC2WA-A is aluminum and screws are 304 stainless steel for use in most industrial applications. This two-way adjustable connector clamp is commonly used to support tubes for mounting sensors, screens, reflectors, plexiglass machine guards, and other industrial components. It is designed for applications where frequent angular adjustments are needed such as machine diagnostic screens. When paired with MT15:16:20-ALK-M6-25 adjustable clamping levers the user can rapidly reposition the screen angularly and/or vertically without tools providing for a safer and more comfortable working environment for the employee and helping to increase productivity. MT15/15-CC2WA-A is manufactured by Otto Ganter, inventoried by Ruland, and RoHS3 compliant.

Product Specifications

Thru Hole 1 Diameter B1	15 mm	Thru Hole 2 Diameter B2	15 mm
Thru Hole Tolerance	+0.11/-0 mm	Thru Hole 2 Tolerance	+0.11/-0 mm
Square Thru Hole S	12 mm	Square Thru Hole 2 S2	12 mm
Width & Height W1	25 mm	Width and Height 2 W2	25 mm
Edge to Center 1 L2	20 mm	Edge to Center 2 L3	20 mm
Center To Center LC	47.5 mm	Overall Length L1	87.5 mm
Clamp Screw CL	M6	Set Screw SS	M6
Weight (lbs)	0.315300	Material Specification	Aluminum
Manufacturer	JW Winco/ Otto Ganter	UPC	634529231753
Country of Origin	Germany	Tariff Code	7609.00.0000
UNSPC	31162908		

Note 1 Performance ratings are for guidance only. The user must determine suitability for a particular application.

Prop 65  **WARNING** This product can expose you to the chemical Nickel (metallic), known to the State of California to cause cancer. For more information go to www.P65Warnings.ca.gov.