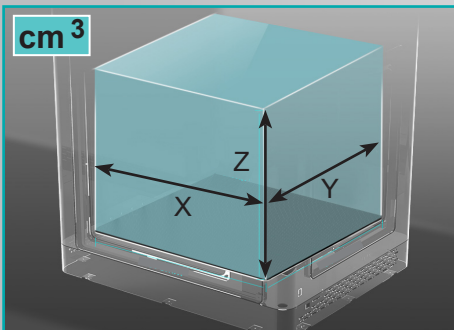
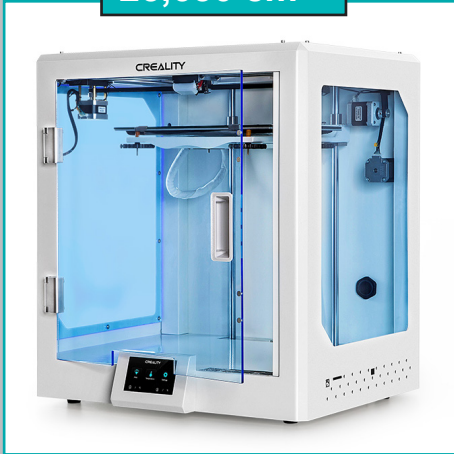


NEO CRUCIBLE

3D Printers for Industry

Creality CR-5 Pro Industrial Grade FDM 3D Printer

Print Volume
25,650 cm³



Industrial Grade Customer Support

- Warranty & Repair Support
- Replacement Parts in Stock
- Technical Support & Consulting

Industrial Grade Material Capabilities

- Fully Enclosed for Temperature Stability
- Max Hotbed Temperature: 110°C (230°F)
- Max Nozzle Temperature: 260°C (500°F)
- Designed for PLA, ABS, PETG, PC

Max Print Volume

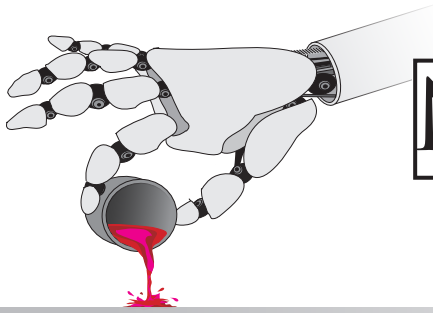
25,650 Cubic cm (cm³) (1565 Cubic Inches)

- X Dimension: 300 mm (11.8 Inches)
- Y Dimension: 225 mm (8.9 Inches)
- Z Dimension: 380 mm (15.0 Inches)

Industrial Grade Applications

- What ifs...
- Prototypes
- Test Fixtures
- Production Fixtures
- Concept Justification
- Packaging Evaluations
- Product Shape Alternatives
- Finished Goods Production

Under
\$1,000
Ask for a
Quote
sales@neocrucible.com



NEO CRUCIBLE

3D Printers for Industry
A Division of Lodestone Group

CR-5 Pro Specifications

Master Process Chip: ATMEGA 2560
 Whisper Quiet for Office Environments
 Power Loss-Recovery ● Filament Run-Out Sensor
 4.3 Color Touch Screen ● File Transfer via SD Card
 Power Supply Rating: 115/230 Volts AC - 24 Volts DC
 Printer Size: 530 x 487 x 612 mm (20.8 x 19.2 x 24.1 Inches)
 Shipping Carton: 624 x 545 x 780 mm (24.6 x 21.5 x 30.7 Inches)
 Gross Weight: 39 Kg (86 lbs) ● Net Weight: 32.5 Kg (72 lbs)
 Print Nozzle Diameter: 0.4 mm ● Filament Diameter: 1.75 mm
 Max Print Temperature: 260°C ● Max Hot Bed Temp: 110°C (230°F)
 Layer Thickness: 0.1 to 0.3 mm (.008 inches) ● Print Accuracy: +/- 0.1 mm



Neo Crucible

Filament Characteristics

	Group 1 Filaments		Group 2 Filaments			Group 3 Filaments				
Brand Material	Creativity CR-PLA	Creativity CR-TPU	Creativity CR-PETG	Creativity ABS	PolyLite ASA	PolyMax PC	PolyMax PC-FR	PolyMide PC/ABS	PolyMide Nylon 6/6	PolyMide PA6-GF
Description	Versatile	Flexible	Versatile	Strong	Strong	Useful	Special	Tough	Tough	Tough
Colors	Many	Many	Many	Some	Some	Limited	Limited	Limited	Limited	Gray
Ease of Use	9	8	7	6	5	5	5	5	5	4
Print Temp	>190°C	>210°C	>230°C	>250°C	>250°C	>260°C	<260°C	>260°C	>280°C	>280°C
Durability	4	7	5	4	3	9	8	10	8	10
Heat Resist	3	2	6	7	7	8	8	8	9	10
Rigidity	5	1	5	6	7	7	9	7	7	10
Weather	3	7	4	4	9	5	5	5	4	4
						Reinforced	UL94-VO	Blend		Glass Fill

Creativity Pro Line-Up

Ask for Volume Discounts

Sermoon D1

Up To 250°C

Print Volume 22,568 cm³

CR-5 Pro H

Up To 300°C

Print Volume 25,650 cm³

CR-3040 Pro

Up To 280°C

Print Volume 36,000 cm³

CR-5060 Pro

Up To 300°C

Print Volume 150,000 cm³