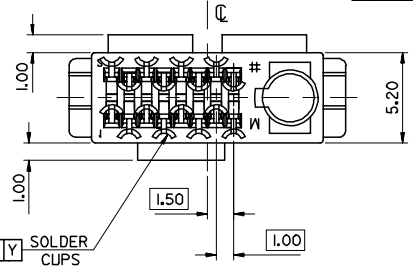
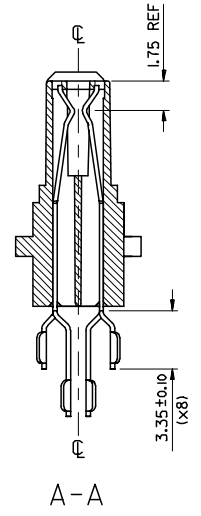
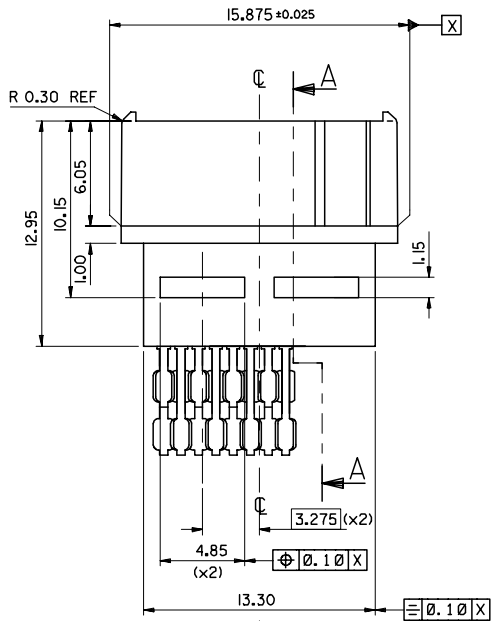
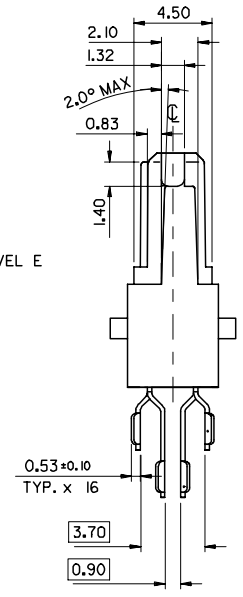
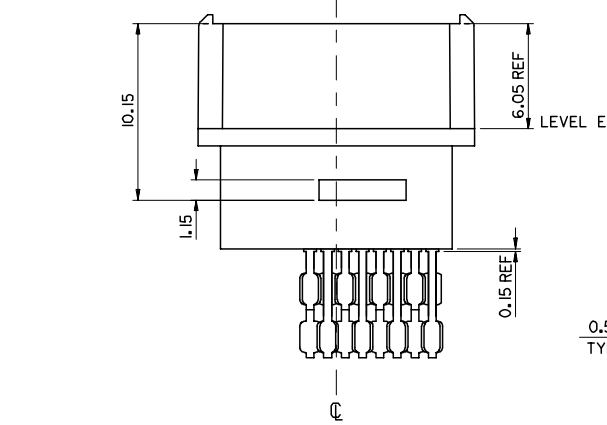


NOTE 4



- NOTES:-
- MATERIALS: HOUSING: POLYAMIDE (PA46), 45% GLASS FILL, UL94 V-0
COLOUR : BLACK AS PER THE FOLLOWING 89992-0058
SIGNAL CONTACTS: 0.25 THICK PHOSPHOR BRONZE
 - PLATING: OVERALL NI UNDERCOAT
CONTACT AREA: Au FLASH ON PdNi
SOLDER CUP AREA: Sn
 - PARTS TO BE PACKAGED IN TUBES 99024-0037
 - DIMENSIONS TO BE TAKEN AT LEVEL E
 - SEE PRODUCT SPECIFICATION No. PS-99020-0086.

MODIFY MATERIAL EC NO: E2006-1163 DRW: HFDUGGAN 2006/08/02 CHKD: 2006/08/11 APPR: EFOLAN 2006/08/21	QUALITY SYMBOLS	GENERAL TOLERANCES (UNLESS SPECIFIED)	DIMENSION STYLE	SCALE	DESIGN UNITS	THIRD ANGLE PROJECTION
	$\nabla=0$ $\nabla=0$	mm INCH 4 PLACES ± --- ± --- 3 PLACES ± 0.05 ± --- 2 PLACES ± 0.05 ± --- 1 PLACE ± 0.10 ± --- ANGULAR ± 1/2°	MM ONLY	5:1	METRIC	
REV	DESCRIPTION	DRAFT WHERE APPLICABLE MUST REMAIN WITHIN DIMENSIONS	DRAWN BY DATE CT0BIN 1999/09/27 CHECKED BY DATE DBRENNAN 1999/09/27 APPROVED BY DATE MWILHITE 1999/09/27	SYSTEM CONNECTOR PLUG ASSEMBLY MOLEX INCORPORATED		MATERIAL NO. 91062-1005 DOCUMENT NO. SD-91062-002
			SIZE A2	THIS DRAWING CONTAINS INFORMATION THAT IS PROPRIETARY TO MOLEX INCORPORATED AND SHOULD NOT BE USED WITHOUT WRITTEN PERMISSION		SHEET NO. 1 OF 2