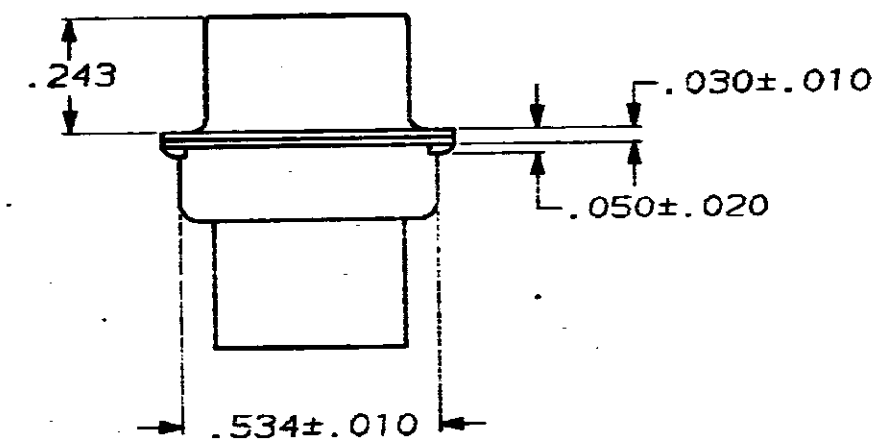
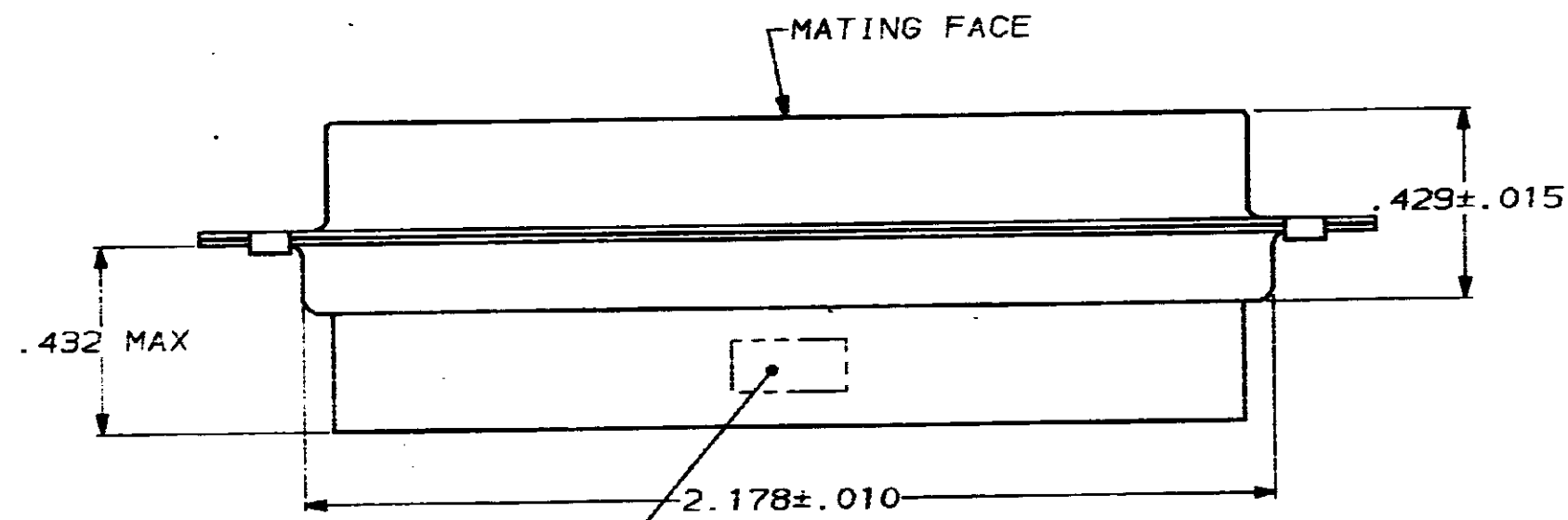
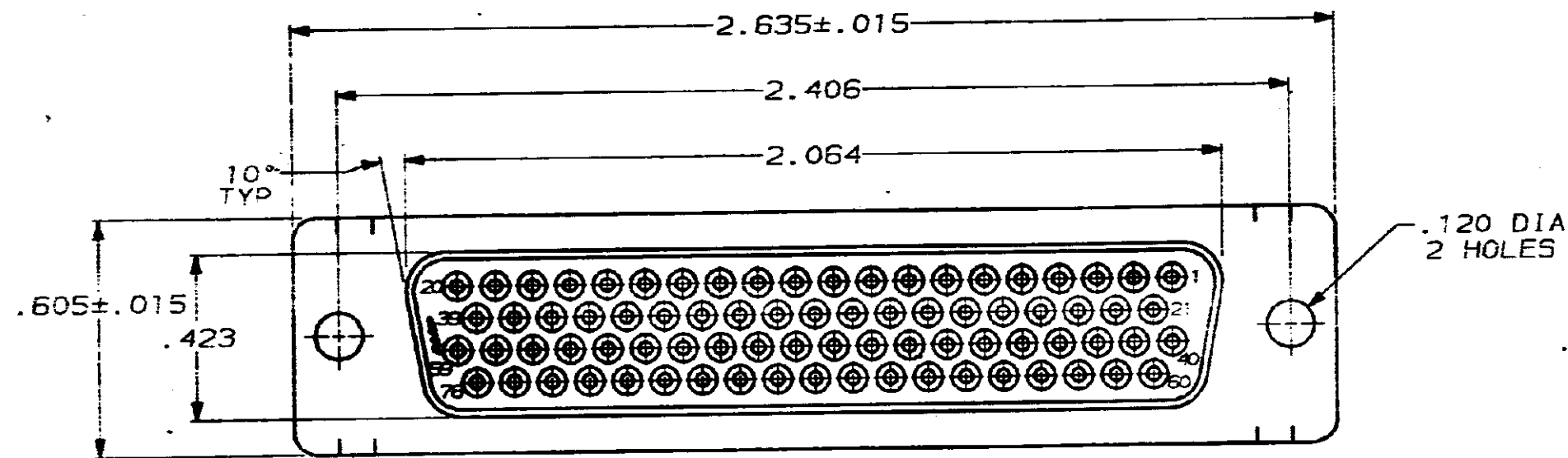


DRAWING MADE IN THIRD ANGLE PROJECTION
 THIS DRAWING IS UNPUBLISHED. RELEASED FOR PUBLICATION .19
 © COPYRIGHT 19 BY AMP INCORPORATED. ALL INTERNATIONAL RIGHTS RESERVED.

LOC		DIST		ZONE		LTR		REVISIONS		DATE	APPD
BD	39							0	REL WAS 87-4870-17	-	-



AMP, PART NO & DATE CODE, MARKED IN AREA INDICATED, ON FAR SIDE

- CONNECTOR ACCEPTS SIZE 22 DF SOCKET CONTACTS, RETENTION TINES ARE AN INTEGRAL PART OF INSERT.
- FLAME RETARDANT 94V-0 RATED GLASS FILLED NYLON, COLOR: BLACK.
- STEEL PER ASTM A109.
- TIN PLATED PER MIL-T-10727.

748569-1

PART NO

DO NOT SCALE PRINT. UNLESS SPECIFIED DIMENSIONS IN INCHES	DR <i>C. Richard</i> 1/12/88	AMP INCORPORATED Harrisburg, Pa. 17105	
TOLERANCES ON:	CHK <i>W.C. Kester</i> 1-18-88	NAME	
2 PLC DEC = -	APPD <i>P. Anderson</i> 1/14/88	RECEPTACLE CONNECTOR, SIZE 5, 78 POSN, AMPLIMITE® HDP-22	
3 PLC DEC = .005	APPD <i>V. Kumar</i> 1/19/88	SIZE	FSCM NO
ANGLES ± 2°	PRODUCT SPEC	C	00779
MATERIAL	APPLICATION SPEC	SCALE	DRAWING NO
MOLDED PARTS: Δ		3:1	748569
SHELLS: Δ	WEIGHT		SHEET 1 OF 1

CUSTOMER DRAWING