

PART NUMBER	REVISION	DESCRIPTION	FEED TYPE
2150222-1	C	FINE CRIMP HEIGHT ADJUST	MECHANICAL
2150222-2	C	FINE CRIMP HEIGHT ADJUST	PNEUMATIC
7-2150222-1	C	MECHANICAL AND CRIMP TOOLING KIT	MECHANICAL
7-2150222-2	C	PNEUMATIC AND CRIMP TOOLING KIT	PNEUMATIC
7-2150222-7	A	CRIMP TOOLING KIT	-

ATLANTIC VERSION TERMINATOR INTERFACE ADAPTER



APPLICATOR DATA		
CRIMP	SIZE	TYPE
WIRE	1.40 mm [.055]	F
INSUL	2.29 mm [.090]	F
APPL INSTRUCTIONS 408-35043		

TERMINAL DATA: G.H./LEAR TERMINAL		TE CRIMP SPECIFICATION	
TERMINAL NAME: RECEPTACLE 3.1 FASTON			
WIRE STRIP LENGTH		TERMINAL INSULATION DIAMETER RANGE	
5.41-5.66 mm [.213-.223 IN]		∅ 2.03-2.54 mm [.080-.100 IN]	
TERMINAL APPLICATION SPECIFICATION	114-2025		AT9106
TERMINALS APPLIED			
TE TERMINAL	G.H./LEAR TERMINAL	TE TERMINAL	G.H./LEAR TERMINAL
2113211-1	22246.124.186		

WIRE SIZE	CRIMP HEIGHT mm [INCH]	CRIMP HEIGHT REFERENCE SETTING
0.60mm2	1.14 +/- 0.05 [.045 +/- .002]	5.7
0.50mm2	1.09 +/- 0.05 [.043 +/- .002]	6.3
0.35mm2	1.02 +/- 0.05 [.040 +/- .002]	7.1
0.30mm2	0.99 +/- 0.05 [.039 +/- .002]	7.4

- 1. RECOMMENDED SPARE PARTS.
- 2. REFER TO SUPPLIED INSTRUCTION SHEET FOR CLEANING, LUBRICATION & STORAGE OF APPLICATOR.
- 3. APPLY PART NUMBER 1-23419-5 LOCTITE TO THREADS OF ITEM 180. APPLY PART NUMBER 2-23419-6 LOCTITE TO THREADS OF ITEM 242.
- 4. CRIMP HEIGHT REFERENCE SETTING WAS THE SETTING USED WHEN THE APPLICATOR WAS QUALIFIED AT THE FACTORY. ADJUSTMENT MAY BE NECESSARY WHEN RUNNING APPLICATOR IN THE FIELD.
- 5. UNLESS SPECIFIED OTHERWISE TORQUE VALUES SHALL BE USED PER DOCUMENT 101-35000.

***WARNING**
ON INSTALLATION, SET WIRE DISC TO CRIMP HEIGHT REFERENCE SETTING FOR LARGEST WIRE SIZE. CRIMP HEIGHT REFERENCE SETTINGS GREATER THAN THE VALUE SHOWN MAY CAUSE DAMAGE TO THE CRIMP TOOLING, REFER TO THE INSTRUCTION SHEET FOR PROPER SETUP AND ADJUSTMENTS.

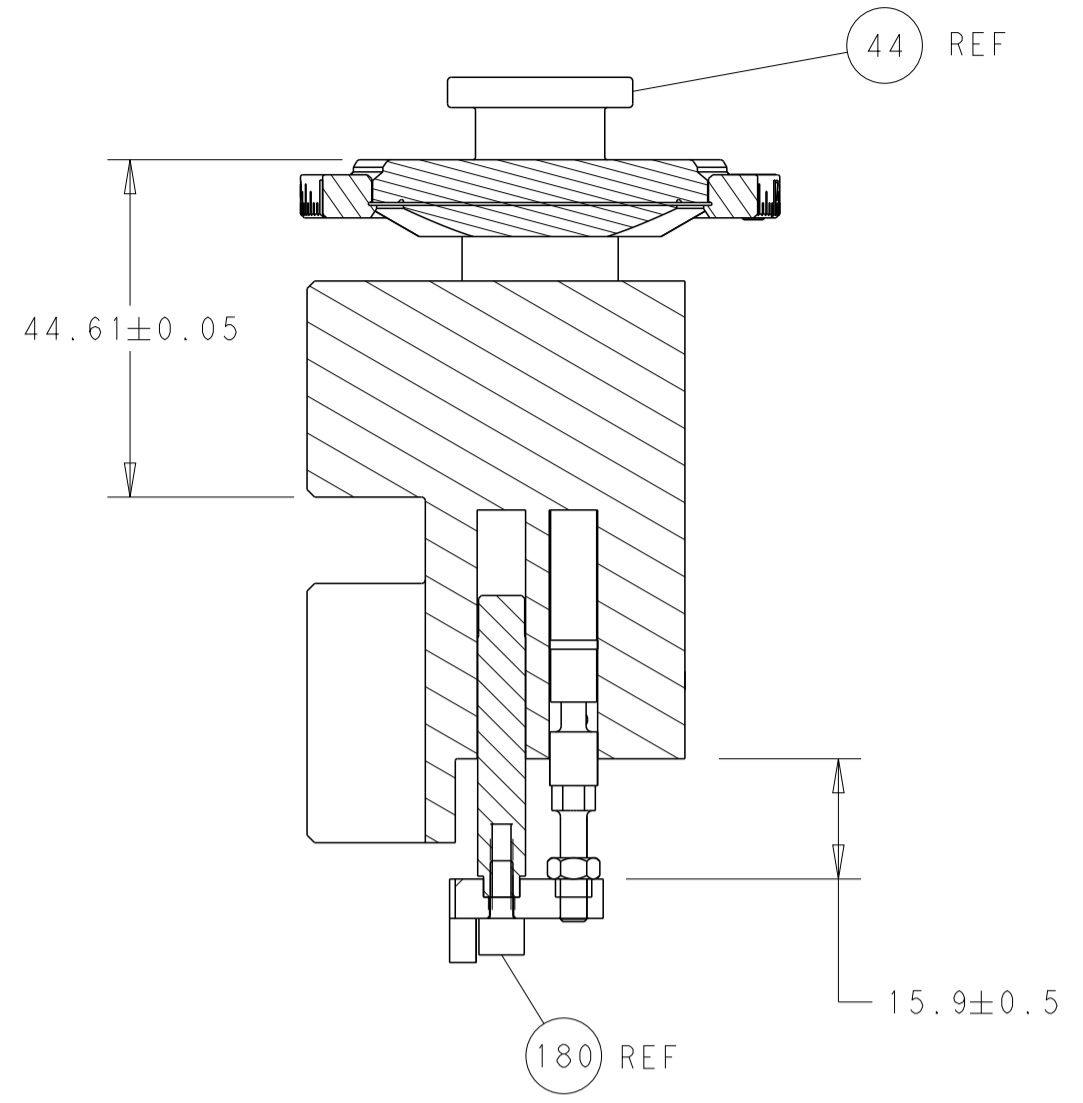
ATLANTIC VERSION
Shown on sheets 1 of 4 & 2 of 4
(Pacific version shown on sheets 3 of 4 & 4 of 4)

LOC	DIST	REVISIONS					
		P	LTN	DESCRIPTION	DATE	OWN	APVD
A	66	C		ECR-22-129302	22NOV2011	TB	RK

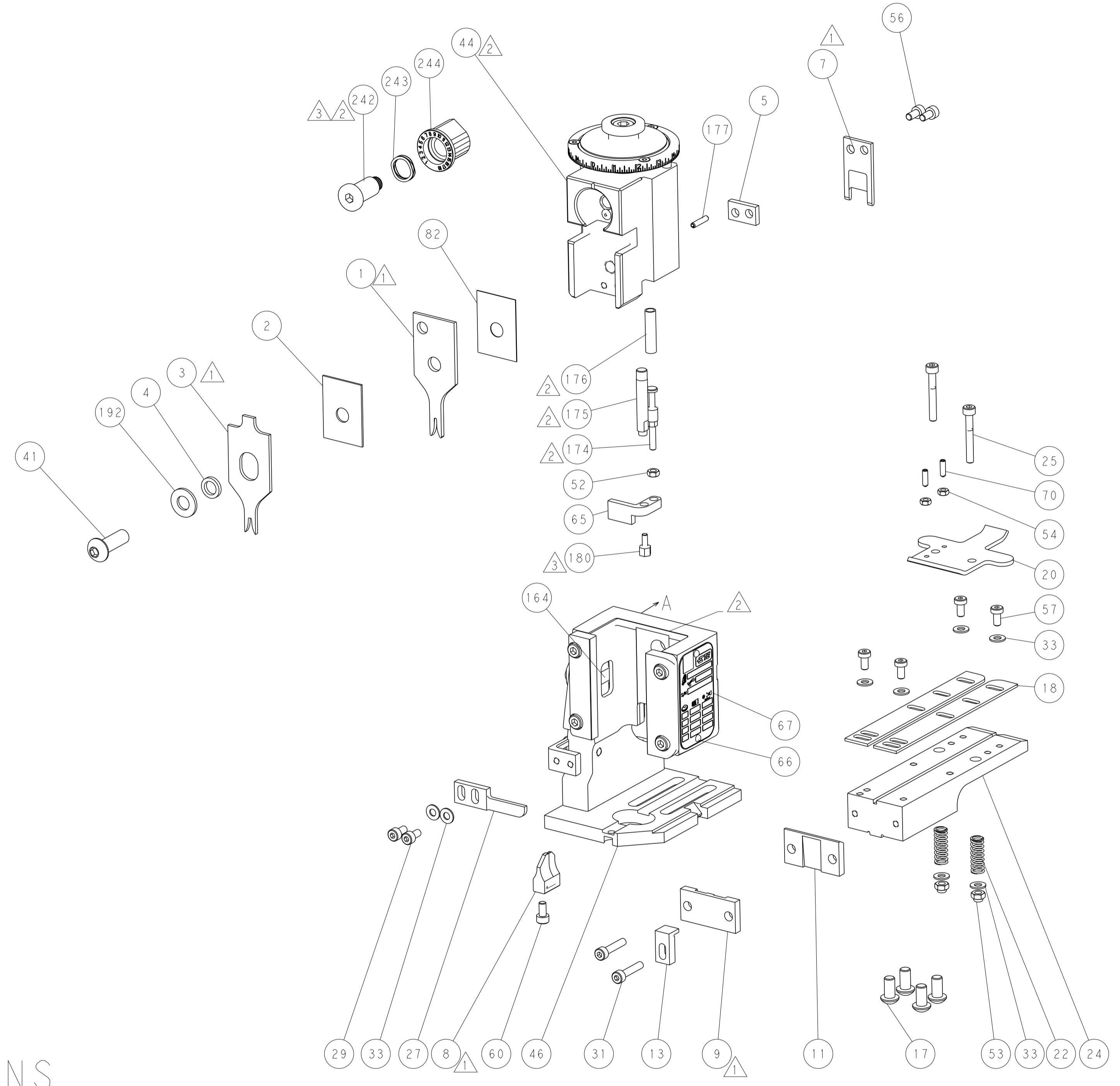
-	1	-	1	-	2119641-1	FEED CAM, AIR FEED	248		
-	1	1	1	1	2119082-9	CAM, SNAIL, INSULATION ADJUSTMENT	244		
-	1	1	1	1	2079764-1	WASHER, WAVE SPRING, CREST-TO-CREST	243		
3	-	1	1	1	2119083-1	RETAINER, INSULATION DIAL	242		
-	-	1	-	1	2119580-1	MECHANICAL FEED ASSEMBLY	239		
-	1	-	1	-	2844940-3	AIR FEED MODULE	238		
-	1	1	1	1	1-18028-0	WASHER, FLAT, REG M8	192		
3	-	1	1	1	1752354-4	STANDOFF, HOLD-DOWN	180		
-	1	1	1	1	6-993111-6	PIN, SLOTTED SPRING 3.0 X 14.0	177		
-	1	1	1	1	8-22280-7	SPRING, COMPRESSION	176		
-	1	1	1	1	1752353-2	GUIDE PIN, HOLDDOWN	175		
-	1	1	1	1	1901680-2	GUIDE PIN, HOLDDOWN	174		
-	REF	REF	REF	REF	994970-2	COUNTER, MAGNETIC	164		
-	1	1	1	1	455888-3	SPACER, CRIMPER	82		
-	1	1	1	1	1803607-4	DOCUMENTATION PACKAGE	71		
-	2	2	2	2	2-18032-2	SCR, SET, FLT PNT, M3 X 10.0	70		
-	1	1	1	1	2119740-1	TAG, IDENTIFICATION	67		
-	2	2	2	2	2168078-1	SCREW, DRIVE, RH, RoHS, 2 x .188	66		
-	1	1	1	1	1901681-5	HOLDDOWN, TERMINAL	65		
-	1	1	1	1	2168083-2	SCR, SKT HD CAP, RoHS, M4 X 8.0	60		
-	1	1	1	1	5-18022-5	SCR, HEX HD CAP, M4 X 6.0	59		
-	-	1	-	1	2063961-1	FEED FINGER	58		
-	4	4	4	4	2168400-4	SHCS, LOW HEAD, RoHS, M4 X 8	57		
-	2	2	2	2	2168083-2	SCR, SKT HD CAP, RoHS, M4 X 8.0	56		
-	2	2	2	2	5018030-1	NUT, HEX, REG, RoHS, M3	54		
-	2	2	2	2	986965-8	NUT, LOCK, HEX, TORQUE (M4)	53		
-	1	1	1	1	1-5018030-0	NUT, HEX, REG, RoHS, M3.5	52		
-	1	-	1	-	2063961-1	FEED FINGER	51		
-	1	2	1	2	18023-9	SCR, SKT HD CAP M4 X 6.0	49		
-	-	1	-	1	2119652-1	FEED CAM, PRE FEED	48		
-	-	1	-	1	2119653-1	FEED CAM, POST FEED	47		
-	1	1	1	1	2119655-5	APPLICATOR BASIC ASSEMBLY, EF	46		
-	1	1	1	1	1803517-1	RAM ASSEMBLY, EF ATLANTIC	44		
-	1	1	1	1	1803602-1	SCR, BHSC, RoHS (M8 X 25)	41		
-	8	8	8	8	1-18028-2	WASHER, FLAT, REG M4	33		
-	2	2	2	2	2168083-9	SCR, SKT HD CAP, RoHS, M4 X 20	31		
-	2	2	2	2	2168083-2	SCR, SKT HD CAP, RoHS, M4 X 8.0	29		
-	1	1	1	1	240639-1	STRIPPER (MACHINING)	27		
-	2	2	2	2	1-2168083-5	SCR, SKT HD CAP, RoHS, M4 X 30	25		
-	1	1	1	1	1752371-9	PLATE, STRIP GUIDE	24		
-	2	2	2	2	4-22281-1	SPRING, COMPRESSION	22		
-	1	1	1	1	1803292-1	DRAG	20		
-	2	2	2	2	1901259-3	GUIDE, LOWER STRIP	18		
-	4	4	4	4	1-2079383-1	SCR, BHSC, RoHS (M6 X 12)	17		
-	1	1	1	1	1752360-1	SPACER, HOLD-DOWN	13		
1	-	1	1	1	240833-2	PLATE, REAR SHEAR	11		
-	-	-	-	-	-	-	10		
1	-	1	1	1	690482-4	PLATE, FRONT SHEAR	9		
1	1	2	2	1	1	8-1633384-2	ANVIL, COMBINATION	8	
1	-	1	1	1	1	690474-4	BLADE, SLUG	7	
-	-	-	-	-	-	-	6		
-	1	1	1	1	1	240641-8	SPACER	5	
-	1	1	1	1	1	2-238011-2	BLOCK, CRIMPER SPACER	4	
1	1	2	2	1	1	1-2119582-1	CRIMPER, INSULATION F PREMIUM	3	
-	1	1	1	1	1	455888-9	SPACER, CRIMPER	2	
1	1	2	2	1	1	456402-1	CRIMPER, WIRE PREMIUM	1	
-	77	72	71	2	-	1	PART NO	DESCRIPTION	ITEM NO

DIMENSIONS: mm		TOLERANCES UNLESS OTHERWISE SPECIFIED:		OWN: B. WEAVER 22NOV2011		CHK: K. STAKEM 22NOV2011		NAME: OCEAN 2.0 End Feed Applicator	
0 PLC	±	1 PLC	±	APVD: G. BAILEY 22NOV2011	PRODUCT SPEC		SIZE: A1		RESTRICTED TO: -
2 PLC	±	3 PLC	±	APPLICATION SPEC		CAGE CODE: 00779		DRAWING NO: 2150222	SHEET 1 OF 4
4 PLC	±	ANGLES	±	WEIGHT: -		SCALE: 1:1		REV: C	
MATERIAL: -		FINISH: -		Customer Accessible Production Drawing		SCALE: 1:1		SHEET 1 OF 4	

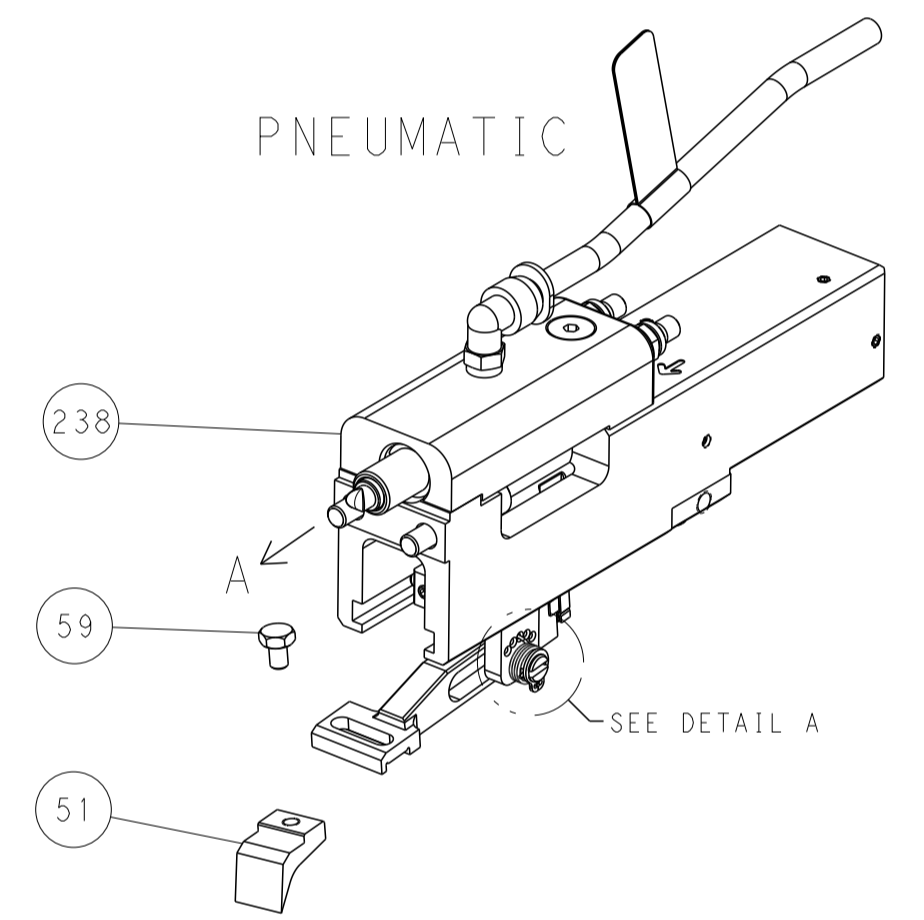
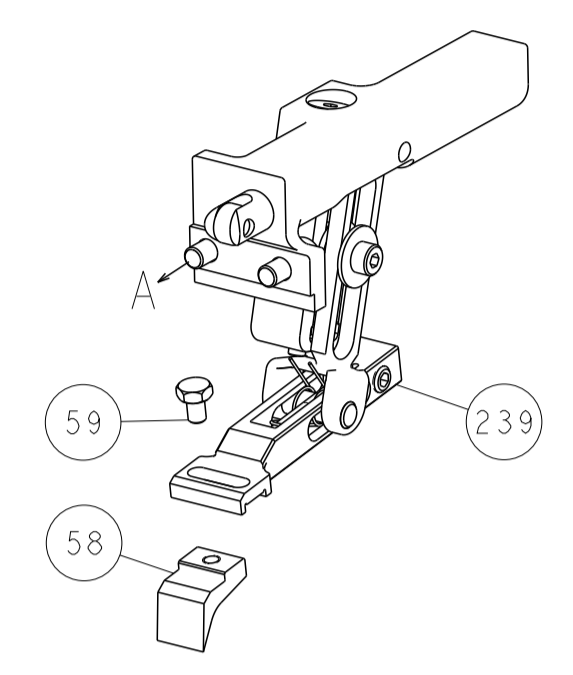
LOC	DIST	REV	DESCRIPTION	DATE	OWN	APVD
A	66		SEE SHEET 1			



RAM AND HOLDDOWN SET-UP

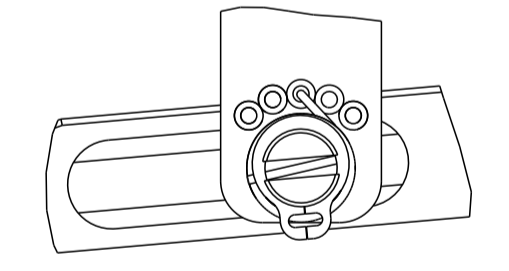


FEED TYPE MECHANICAL



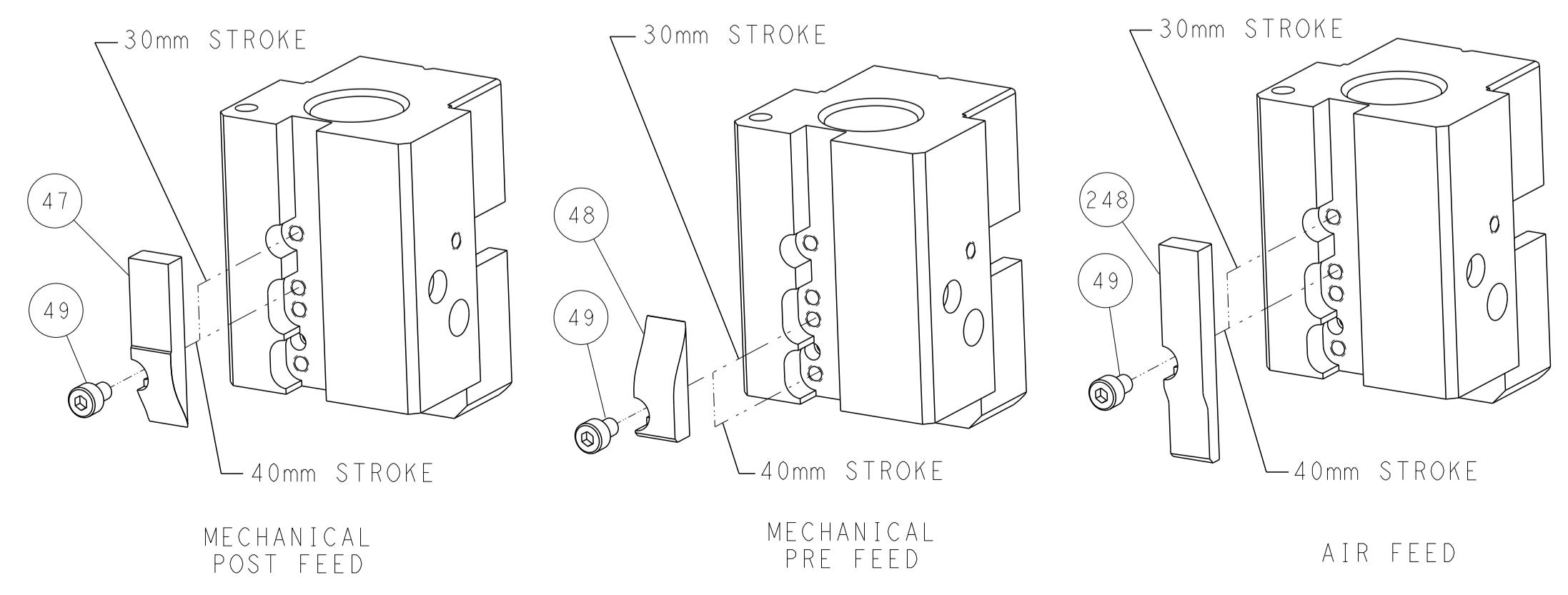
PNEUMATIC

FEED SPRING SETTING POSITION



DETAIL A

CAM POSITIONS

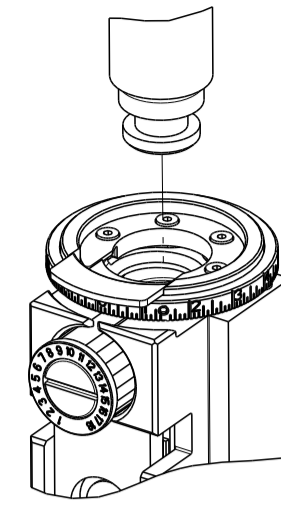


ATLANTIC VERSION
 Shown on sheets 1 of 4 & 2 of 4
 (Pacific version shown on sheets 3 of 4 & 4 of 4)

DIMENSIONS: mm 		TOLERANCES UNLESS OTHERWISE SPECIFIED: 0 PLC ± 1 PLC ± 2 PLC ± 3 PLC ± 4 PLC ± ANGLES ± FINISH		OWN: B. WEAVER 22NOV2011 CHK: K. STAKEM 22NOV2011 APVD: G. BAILEY 22NOV2011 PRODUCT SPEC APPLICATION SPEC WEIGHT Customer Accessible Production Drawing		NAME: OCEAN 2.0 End Feed Applicator SIZE: A1 CAGE CODE: 00779 DRAWING NO: 2150222 SCALE: 1:1 SHEET: 2 OF 4 REV: C		RESTRICTED TO:	
SHEETS 3 & 4 ARE NOT REQUIRED FOR ATLANTIC VERSION									

THIS DRAWING IS UNPUBLISHED.	RELEASED FOR PUBLICATION	20	
COPYRIGHT 20 BY TYCO ELECTRONICS CORPORATION. ALL RIGHTS RESERVED.			
PART NUMBER	REVISION	DESCRIPTION	FEED TYPE
2-2150222-1	C	FINE CRIMP HEIGHT ADJUST	MECHANICAL
2-2150222-2	C	FINE CRIMP HEIGHT ADJUST	PNEUMATIC
7-2150222-7	A	CRIMP TOOLING KIT	-

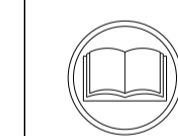
PACIFIC VERSION TERMINATOR
INTERFACE ADAPTER



APPLICATOR DATA		
CRIMP	SIZE	TYPE
WIRE	1.40 mm [.055]	F
INSUL	2.29 mm [.090]	F
APPL INSTRUCTIONS 408-35043		

TERMINAL DATA: G.H./LEAR TERMINAL		TE CRIMP SPECIFICATION
TERMINAL NAME: RECEPTACLE 3.1 FASTON		
WIRE STRIP LENGTH 5.41-5.66 mm [.213-.223 IN]		TERMINAL INSULATION DIAMETER RANGE 2.03-2.54 mm [.080-.100 IN]
TERMINAL APPLICATION SPECIFICATION 114-2025	-	-
TERMINALS APPLIED		AT9106
TE TERMINAL	G.H./LEAR TERMINAL	TE TERMINAL
2113211-1	22246.124.186	

WIRE SIZE	CRIMP HEIGHT mm [INCH]	CRIMP HEIGHT REFERENCE SETTING
0.60mm2	1.14 +/- 0.05 [.045 +/- .002]	5.7
0.50mm2	1.09 +/- 0.05 [.043 +/- .002]	6.3
0.35mm2	1.02 +/- 0.05 [.040 +/- .002]	7.1
0.30mm2	0.99 +/- 0.05 [.039 +/- .002]	7.4



- 1 RECOMMENDED SPARE PARTS.
- 2 REFER TO SUPPLIED INSTRUCTION SHEET FOR CLEANING, LUBRICATION & STORAGE OF APPLICATOR.
- 3 APPLY PART NUMBER 1-23419-5 LOCTITE TO THREADS OF ITEM 180. APPLY PART NUMBER 2-23419-6 LOCTITE TO THREADS OF ITEM 242.
- 4 CRIMP HEIGHT REFERENCE SETTING WAS THE SETTING USED WHEN THE APPLICATOR WAS QUALIFIED AT THE FACTORY. ADJUSTMENT MAY BE NECESSARY WHEN RUNNING APPLICATOR IN THE FIELD.
- 5. UNLESS SPECIFIED OTHERWISE TORQUE VALUES SHALL BE USED PER DOCUMENT 101-35000.

***WARNING**
ON INSTALLATION, SET WIRE DISC TO CRIMP HEIGHT REFERENCE SETTING FOR LARGEST WIRE SIZE. CRIMP HEIGHT REFERENCE SETTINGS GREATER THAN THE VALUE SHOWN MAY CAUSE DAMAGE TO THE CRIMP TOOLING, REFER TO THE INSTRUCTION SHEET FOR PROPER SETUP AND ADJUSTMENTS.

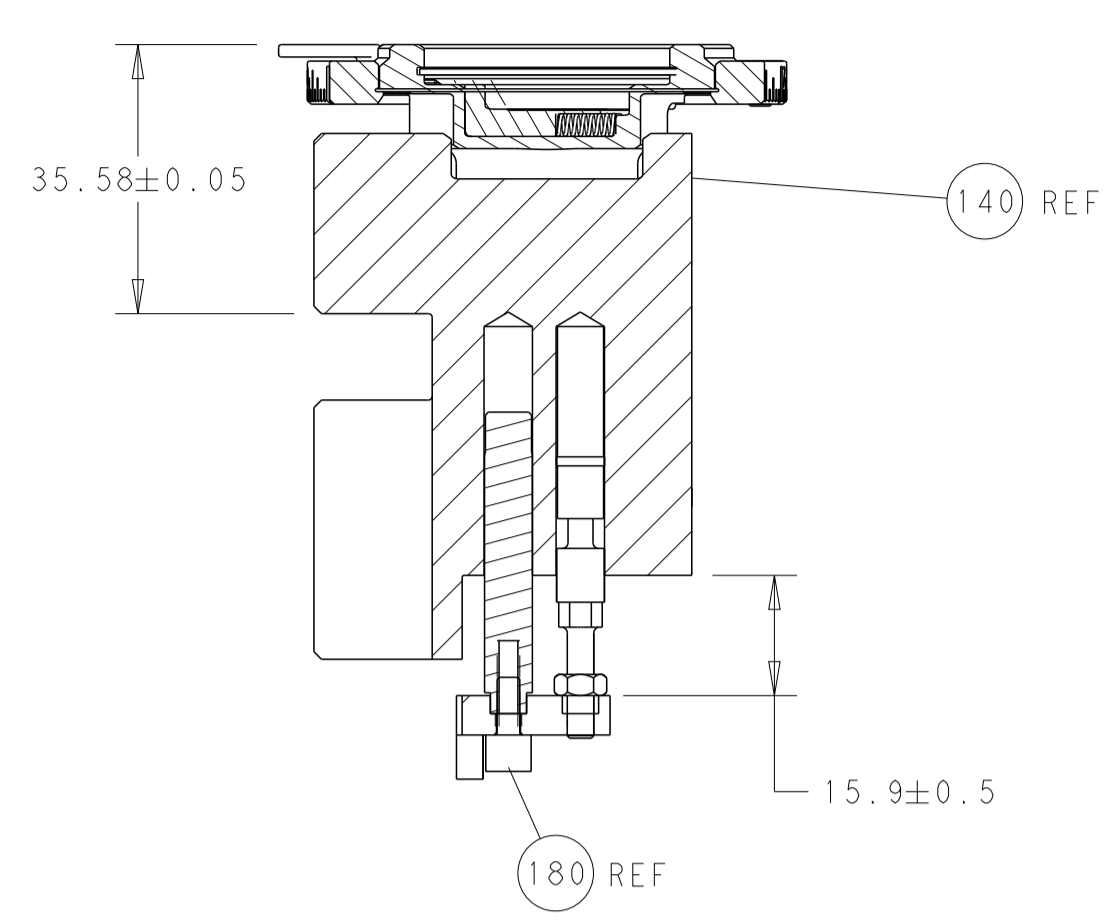
PACIFIC VERSION
Shown on sheets 3 of 4 & 4 of 4
(Atlantic version shown on sheets 1 of 4 & 2 of 4)

LOC	DIST	REVISIONS					
A	66	P	LTN	DESCRIPTION	DATE	OWN	APVD
		-	-	SEE SHEET 1	-	-	-

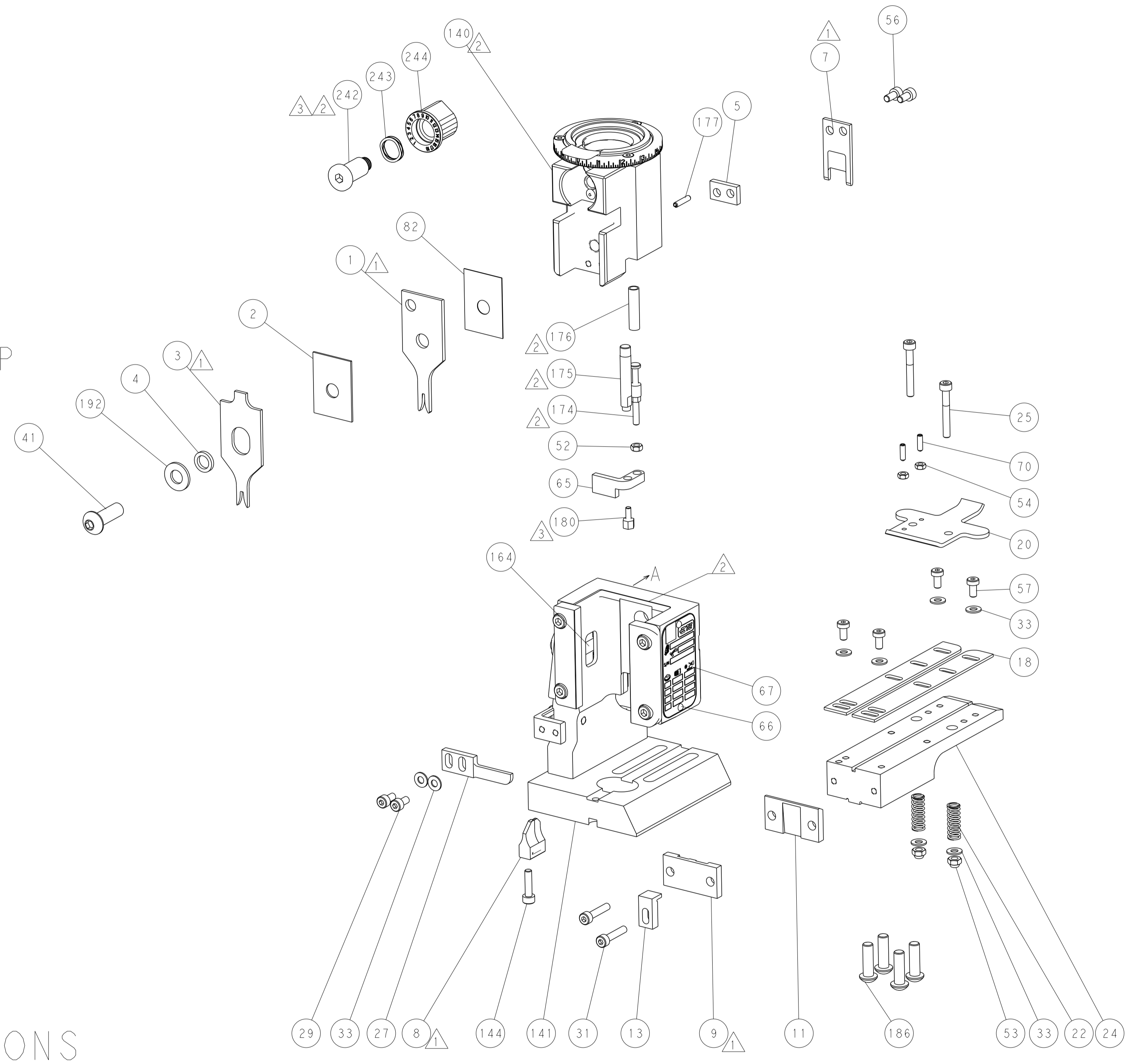
-	1	1	2119082-9	CAM, SNAIL, INSULATION ADJUSTMENT	244
-	1	1	2079764-1	WASHER, WAVE SPRING, CREST-TO-CREST	243
3	-	1	2119083-1	RETAINER, INSULATION DIAL	242
-	-	1	2119580-1	MECHANICAL FEED ASSEMBLY	239
-	1	-	2844940-3	AIR FEED MODULE	238
-	1	1	1-18028-0	WASHER, FLAT, REG M8	192
-	4	4	2079383-9	SCR, BHSC, RoHS (M6 X 20)	186
3	-	1	1752354-4	STANDOFF, HOLD-DOWN	180
-	1	1	6-993111-6	PIN, SLOTTED SPRING 3.0 X 14.0	177
-	1	1	8-22280-7	SPRING, COMPRESSION	176
-	1	1	1752353-2	GUIDE PIN, HOLDDOWN	175
-	1	1	1901680-2	GUIDE PIN, HOLDDOWN	174
-	REF	REF	994970-2	COUNTER, MAGNETIC	164
-	1	-	2119641-2	FEED CAM, AIR FEED	152
-	1	1	2168083-8	SCR, SKT HD CAP, RoHS, M4 X 16	144
-	-	1	2119653-2	FEED CAM, POST FEED	142
-	1	1	2119655-6	APPLICATOR BASIC ASSEMBLY, EF	141
-	1	1	1803518-1	RAM ASSEMBLY, EF PACIFIC	140
-	1	1	455888-3	SPACER, CRIMPER	82
-	1	1	1803607-4	DOCUMENTATION PACKAGE	71
-	2	2	2-18032-2	SCR, SET, FLT PNT, M3 X 10.0	70
-	1	1	2119740-1	TAG, IDENTIFICATION	67
-	2	2	2168078-1	SCREW, DRIVE, RH, RoHS, 2 x .188	66
-	1	1	1901681-5	HOLDDOWN, TERMINAL	65
-	1	1	5-18022-5	SCR, HEX HD CAP, M4 X 6.0	59
-	-	1	2063961-1	FEED FINGER	58
-	4	4	2168400-4	SHCS, LOW HEAD, RoHS, M4 X 8	57
-	2	2	2168083-2	SCR, SKT HD CAP, RoHS, M4 X 8.0	56
-	2	2	5018030-1	NUT, HEX, REG, RoHS, M3	54
-	2	2	986965-8	NUT, LOCK, HEX, TORQUE (M4)	53
-	1	1	1-5018030-0	NUT, HEX, REG, RoHS, M3.5	52
-	1	-	2063961-1	FEED FINGER	51
-	1	2	18023-9	SCR, SKT HD CAP M4 X 6.0	49
-	-	1	2119652-1	FEED CAM, PRE FEED	48
-	1	1	1803602-1	SCR, BHSC, RoHS (M8 X 25)	41
-	8	8	1-18028-2	WASHER, FLAT, REG M4	33
-	2	2	2168083-9	SCR, SKT HD CAP, RoHS, M4 X 20	31
-	2	2	2168083-2	SCR, SKT HD CAP, RoHS, M4 X 8.0	29
-	1	1	240639-1	STRIPPER (MACHINING)	27
-	2	2	1-2168083-5	SCR, SKT HD CAP, RoHS, M4 X 30	25
-	1	1	1752371-9	PLATE, STRIP GUIDE	24
-	2	2	4-22281-1	SPRING, COMPRESSION	22
-	1	1	1803292-1	DRAG	20
-	2	2	1901259-3	GUIDE, LOWER STRIP	18
-	1	1	1752360-1	SPACER, HOLD-DOWN	13
1	-	1	240833-2	PLATE, REAR SHEAR	11
-	-	-	-	-	10
1	-	1	690482-4	PLATE, FRONT SHEAR	9
1	1	1	8-1633384-2	ANVIL, COMBINATION	8
1	-	1	690474-4	BLADE, SLUG	7
-	-	-	-	-	6
-	1	1	240641-8	SPACER	5
-	1	1	2-238011-2	BLOCK, CRIMPER SPACER	4
1	1	1	1-2119582-1	CRIMPER, INSULATION F PREMIUM	3
-	1	1	455888-9	SPACER, CRIMPER	2
1	1	1	456402-1	CRIMPER, WIRE PREMIUM	1
-	77-22-21	-	PART NO	DESCRIPTION	ITEM NO

<small>THIS DRAWING IS UNPUBLISHED. RELEASED FOR PUBLICATION. ALL RIGHTS RESERVED.</small>		DWN B. WEAVER 22NOV2011 CHK K. STAKEM 22NOV2011	TE Connectivity Harrisburg, PA 17105-3608
DIMENSIONS: mm 		APVD G. BAILEY 22NOV2011 PRODUCT SPEC	
TOLERANCES UNLESS OTHERWISE SPECIFIED: 0 PLC ± 1 PLC ± 2 PLC ± 3 PLC ± 4 PLC ± ANGLES ± FINISH ±		NAME: OCEAN 2.0 End Feed Applicator APPLICATION SPEC: - SIZE: A1 CAGE CODE: 00779 DRAWING NO: C=2150222	RESTRICTED TO: - WEIGHT: - SCALE: 1:1 SHEET: 3 OF 4 REV: C
MATERIAL: -		Customer Accessible Production Drawing	

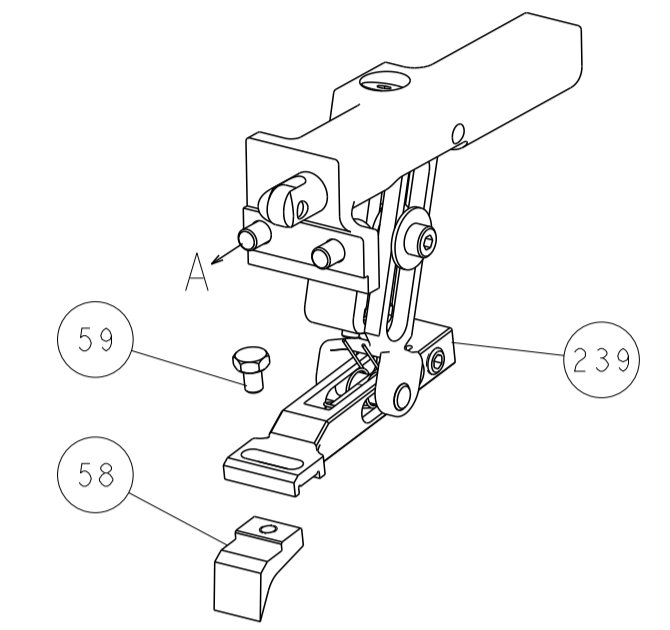
LOC		DIST		REVISIONS			
A	66	P	LTM	DESCRIPTION	DATE	DMN	APVD
		-		SEE SHEET 1			



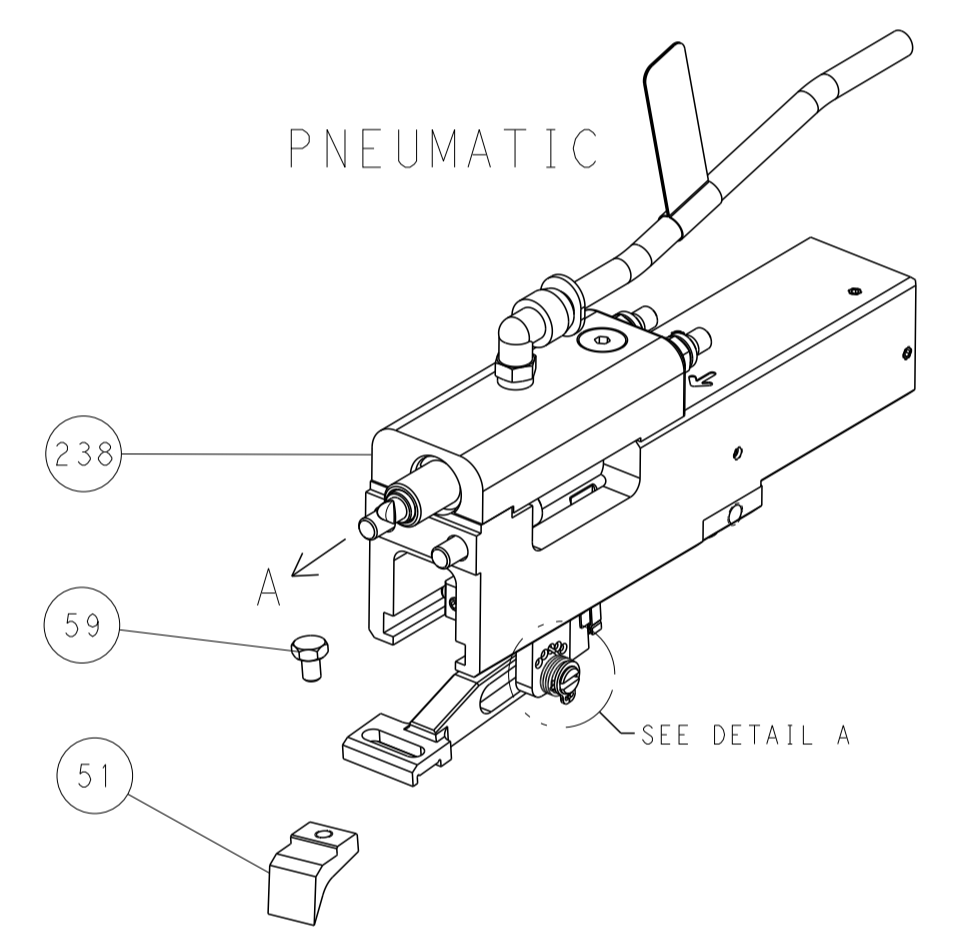
RAM AND HOLDDOWN SET-UP



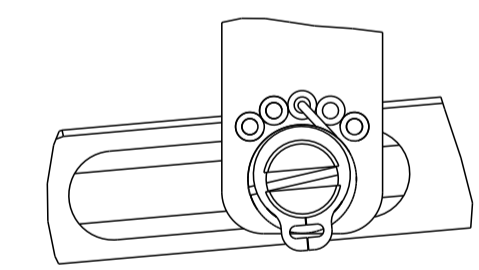
FEED TYPE
MECHANICAL



PNEUMATIC

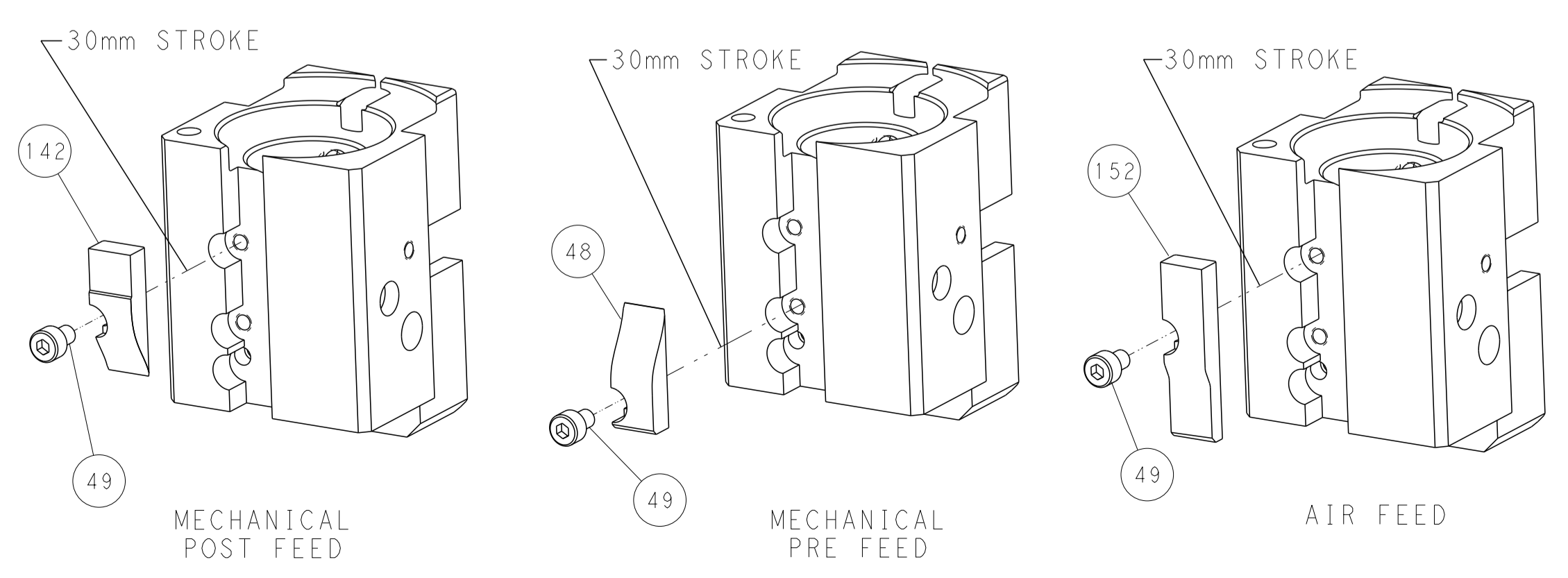


FEED SPRING
SETTING POSITION



DETAIL A

CAM POSITIONS



PACIFIC VERSION
 Shown on sheets 3 of 4 & 4 of 4
 (Atlantic version shown on sheets 1 of 4 & 2 of 4)

DIMENSIONS:		TOLERANCES UNLESS OTHERWISE SPECIFIED:		DWG: B. WEAVER 22NOV2011		TE Connectivity	
mm	0 PLC ±	1 PLC ±	2 PLC ±	3 PLC ±	4 PLC ±	Harrisburg, PA 17105-3608	
MATERIAL:		FINISH:		CHK: K. STAKEM 22NOV2011		NAME: OCEAN 2.0 End Feed Applicator	
				APVD: G. BAILEY 22NOV2011		SIZE: A 00779	
				PRODUCT SPEC:		CAGE CODE: 2150222	
				APPLICATION SPEC:		DRAWING NO: 2150222	
				WEIGHT:		SCALE: 1:1	
				Customer Accessible Production Drawing		SHEET 4 OF 4 REV C	